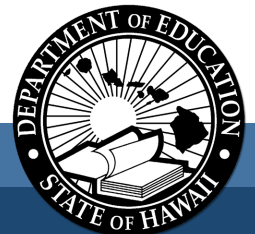
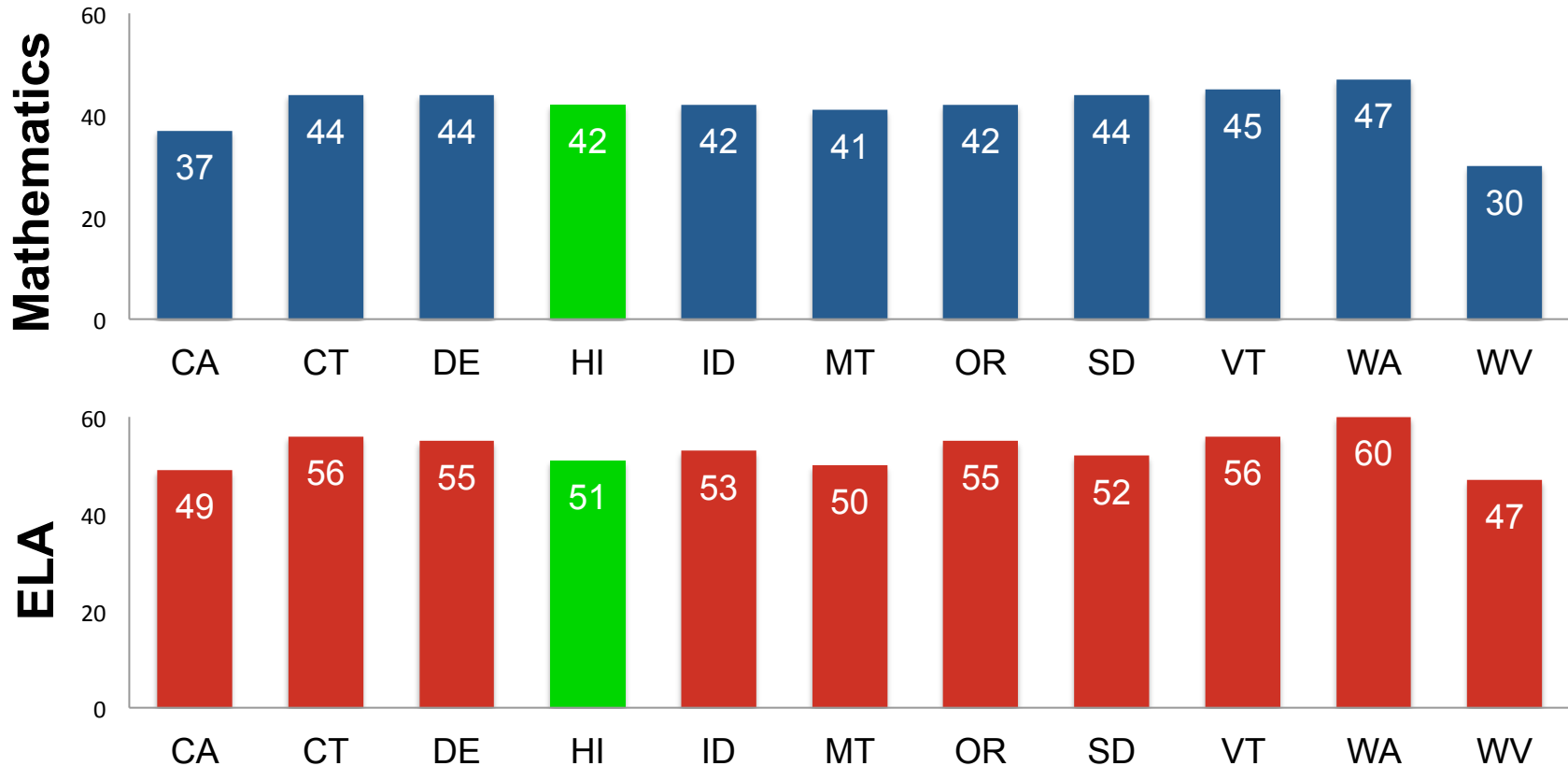


State comparisons

Percent met achievement standard, grades 3-8 (as of Sept. 30, 2016)



Hawaii: 2016 vs 2015

*Percent met achievement standard,
by grade level in 2016 compared with 2015*

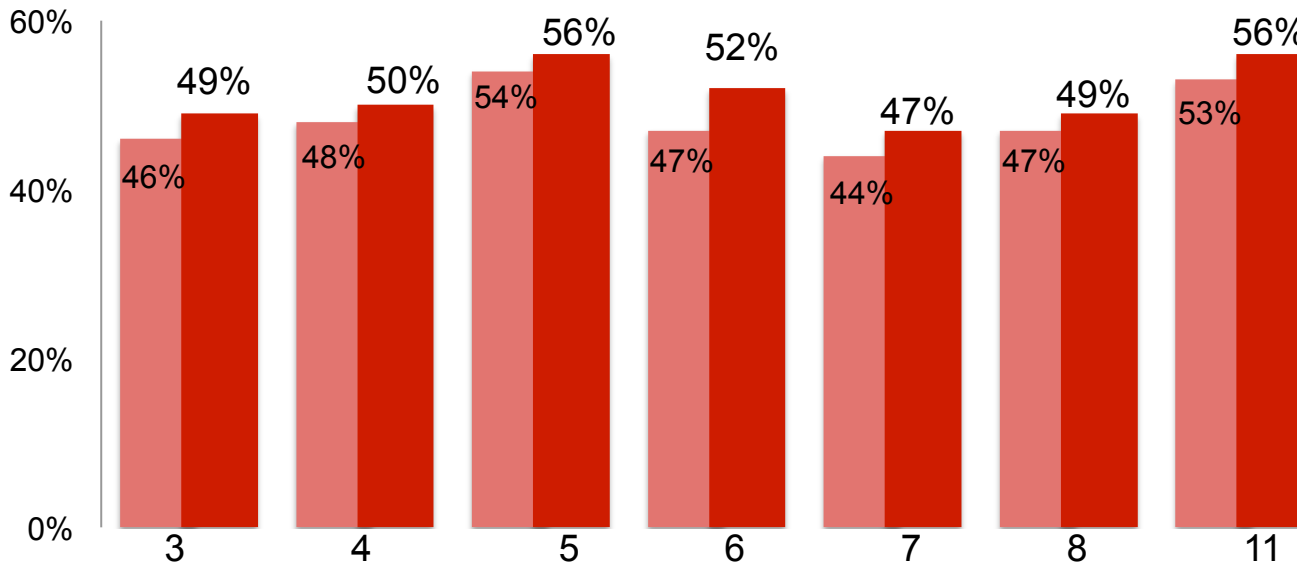
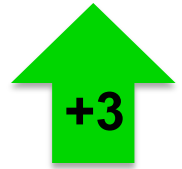


English Language Arts/Literacy

Overall:

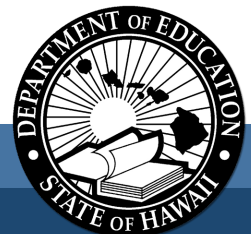
2015: 48%

2016: 51%



2015 2016

Greatest increase:
Grade 6 (+5)



Hawaii: 2016 vs 2015

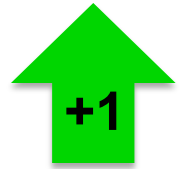
*Percent met achievement standard,
by grade level in 2016 compared with 2015*



Overall:

2015: 41%

2016: 42%



Mathematics

