



# Momilani Elementary

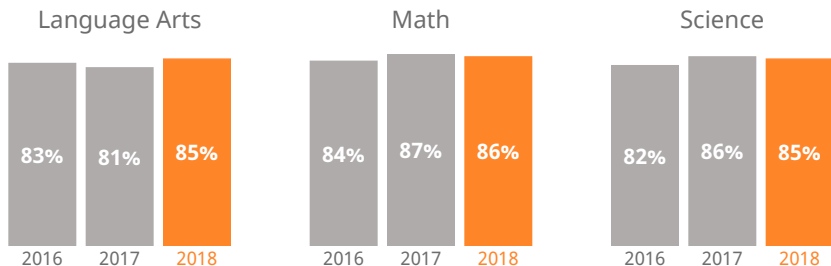
2130 Hookiekie Street, Pearl City, Hawaii | Oahu | Pearl City-Waipahu Complex Area

**THE STRIVE HI SCHOOL PERFORMANCE REPORT** is an annual snapshot of a school's performance on key indicators of student success. This report shows schools' progress on the Department and Board of Education's Strategic Plan and federally-required indicators under the Every Student Succeeds Act. These results help inform action for teachers, principals, community members, and other stakeholders.



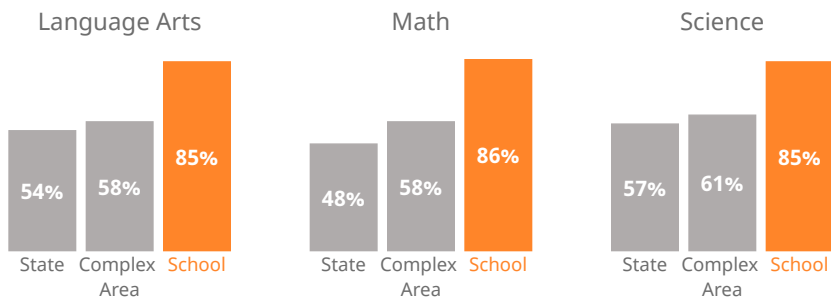
## How are students performing in each subject?

Measures the percent of students meeting the standard/who are proficient on state assessments.



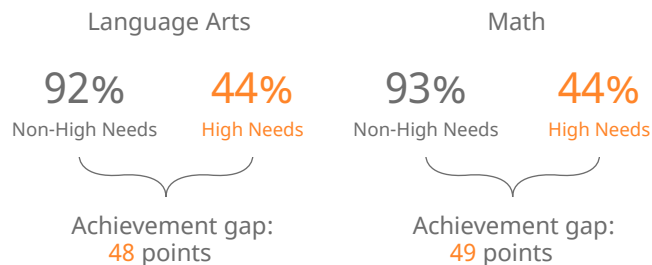
## How are students performing compared to others?

Compares the percent of students meeting the standard/who are proficient on state assessments.



## How are student subgroups performing?

High Needs: English learners, economically disadvantaged, and students receiving Special Education services. Non-High Needs: All other students.



--  
of students learning English are **on-track** to English language proficiency



## How are students' academic progress measured?

The Smarter Balanced test shows the relative progress of the average student on state assessments using a Median Growth Percentile (MGP). HSA-Alt & Kā'EO tests show the percent of students making academic growth each year.

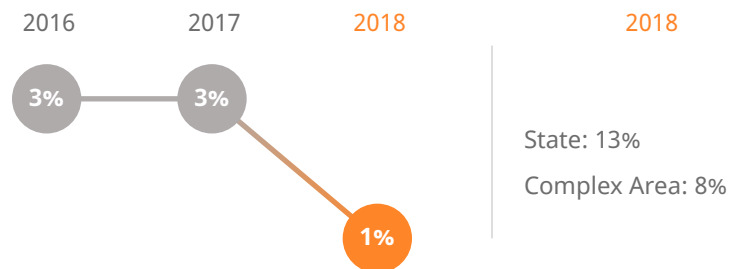


## How many 3rd graders read on grade level?

**95%** of 3rd graders read **near, at, or above** grade level



## How many students missed 15 or more days of school this year?



## How do students feel about their school?

Measures percent of students reporting positive school climate as measured by the Tripod Student Perception Survey.

**94%** of students **feel positively** about their school

# Momilani Elementary

2130 Hookiekie Street, Pearl City, Hawaii | Oahu | Pearl City-Waipahu Complex Area

## Our Story

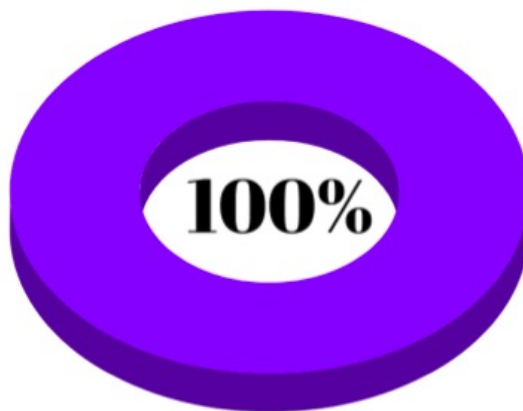
“Quality Education in a safe, caring environment” reflects Momilani Elementary’s commitment to excellence in all aspects of teaching and learning. Staff strive to improve the instructional strategies and curriculum to challenge every child.

The school enjoys strong parent, community and business support. Extracurricular activities include foreign language, art, music, dance, intramurals and drama. Collaboration, teamwork, shared vision and shared leadership are the driving forces behind Momilani Elementary’s effective research-based school improvement process.

## Pearl City Complex Math Construct

Pearl City Complex is committed to providing every student a rich and rigorous mathematics curriculum that is focused on the development of concepts, the acquisition of basic and advanced skills and the integration of problem solving experiences. Through the Pearl City Complex Math Construct, educators are encouraged to provide challenging mathematics opportunities to foster the growth of intelligent, thoughtful and mathematically literate members of society.

## Pearl City Complex Math Construct Participation



100% of classroom Math teachers participated in the Pearl City Complex Math Construct.

## About Our School

Principal | Doreen Higa

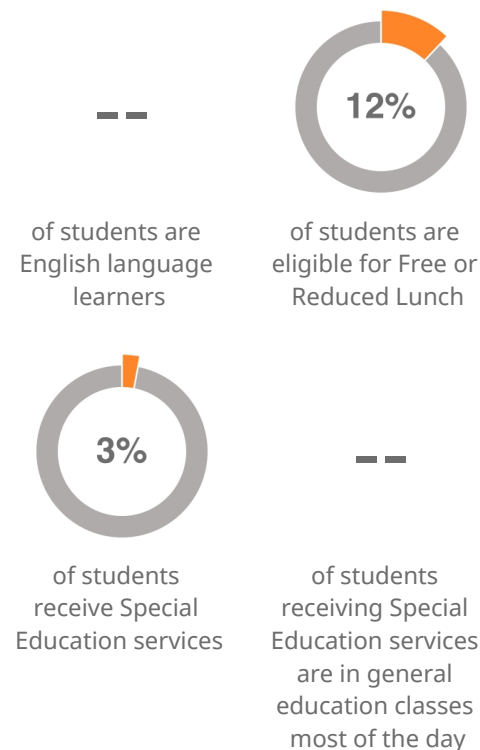
Grades | K-6

808-307-5800

[www.momilani.k12.hi.us](http://www.momilani.k12.hi.us)

409

students enrolled



How do you measure how well a school is doing? In our estimation, it’s more than scores on high-stakes tests. Schools should show that they are supporting children along the educational pipeline toward college, career, and community readiness. Are our students attending school? Are they graduating? Are they going to college? And how successfully are schools reducing the achievement gap between high-needs and non-high needs students?

The Strive HI Performance System was designed to account for these factors in student success. Initially created in 2013 by a U.S. Department of Education waiver from certain aspects of the former No Child Left Behind Act, Strive HI has been refocused by the goals and priorities of the 2017-2020 Department of Education and Board of Education Strategic Plan, the governing document for the public education system.

Learn more at  
<http://bit.ly/StriveHISystem>



# Momilani Elementary

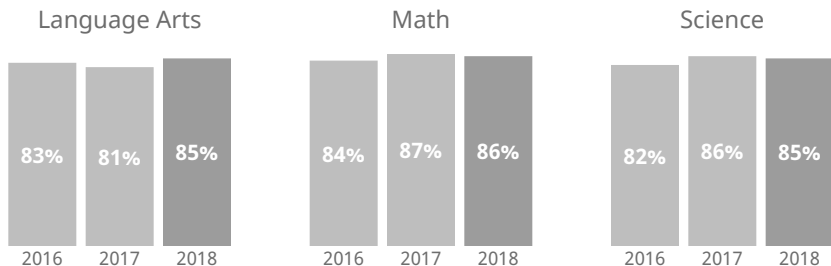
2130 Hookiekie Street, Pearl City, Hawaii | Oahu | Pearl City-Waipahu Complex Area

**THE STRIVE HI SCHOOL PERFORMANCE REPORT** is an annual snapshot of a school's performance on key indicators of student success. This report shows schools' progress on the Department and Board of Education's Strategic Plan and federally-required indicators under the Every Student Succeeds Act. These results help inform action for teachers, principals, community members, and other stakeholders.



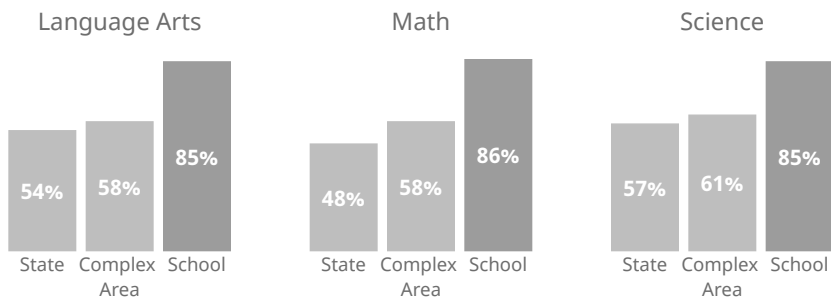
## How are students performing in each subject?

Measures the percent of students meeting the standard/who are proficient on state assessments.



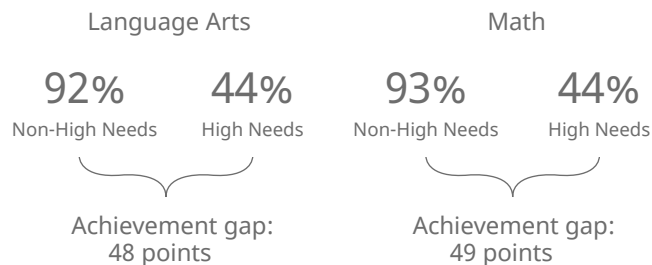
## How are students performing compared to others?

Compares the percent of students meeting the standard/who are proficient on state assessments.



## How are student subgroups performing?

High Needs: English learners, economically disadvantaged, and students receiving Special Education services. Non-High Needs: All other students.



## How are students' academic progress measured?

The Smarter Balanced test shows the relative progress of the average student on state assessments using a Median Growth Percentile (MGP). HSA-Alt & Kā'EO tests show the percent of students making academic growth each year.

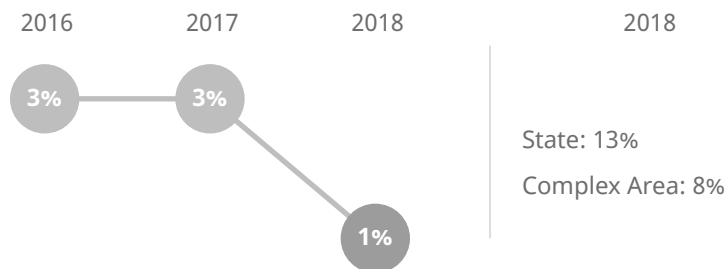


## How many 3rd graders read on grade level?

95% of 3rd graders read near, at, or above grade level



## How many students missed 15 or more days of school this year?



## How do students feel about their school?

Measures percent of students reporting positive school climate as measured by the Tripod Student Perception Survey.

94% of students feel positively about their school

# Momilani Elementary

2130 Hookiekie Street, Pearl City, Hawaii | Oahu | Pearl City-Waipahu Complex Area

## Our Story

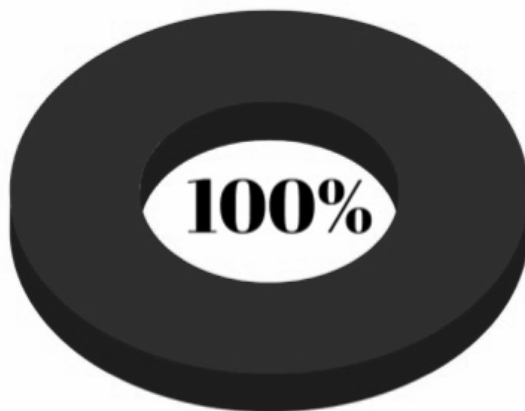
“Quality Education in a safe, caring environment” reflects Momilani Elementary’s commitment to excellence in all aspects of teaching and learning. Staff strive to improve the instructional strategies and curriculum to challenge every child.

The school enjoys strong parent, community and business support. Extracurricular activities include foreign language, art, music, dance, intramurals and drama. Collaboration, teamwork, shared vision and shared leadership are the driving forces behind Momilani Elementary’s effective research-based school improvement process.

## Pearl City Complex Math Construct

Pearl City Complex is committed to providing every student a rich and rigorous mathematics curriculum that is focused on the development of concepts, the acquisition of basic and advanced skills and the integration of problem solving experiences. Through the Pearl City Complex Math Construct, educators are encouraged to provide challenging mathematics opportunities to foster the growth of intelligent, thoughtful and mathematically literate members of society.

## Pearl City Complex Math Construct Participation



100% of classroom Math teachers participated in the Pearl City Complex Math Construct.

## About Our School

Principal | Doreen Higa

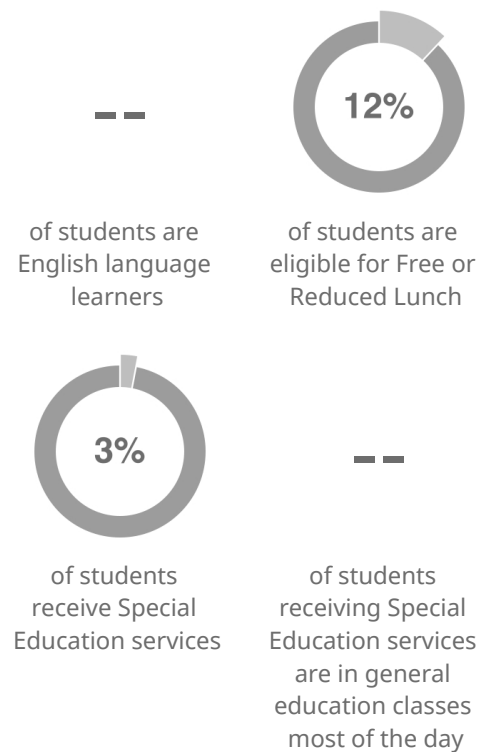
Grades | K-6

808-307-5800

[www.momilani.k12.hi.us](http://www.momilani.k12.hi.us)

409

students enrolled



How do you measure how well a school is doing? In our estimation, it's more than scores on high-stakes tests. Schools should show that they are supporting children along the educational pipeline toward college, career, and community readiness. Are our students attending school? Are they graduating? Are they going to college? And how successfully are schools reducing the achievement gap between high-needs and non-high needs students?

The Strive HI Performance System was designed to account for these factors in student success. Initially created in 2013 by a U.S. Department of Education waiver from certain aspects of the former No Child Left Behind Act, Strive HI has been refocused by the goals and priorities of the 2017-2020 Department of Education and Board of Education Strategic Plan, the governing document for the public education system.

Learn more at  
<http://bit.ly/StriveHISystem>