



Nānākuli Elementary

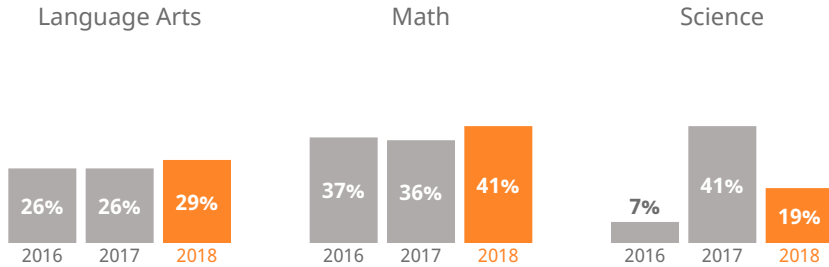
89-778 Haleakala Avenue, Waiānae, Hawaii | Oahu | Nanakuli-Waiānae Complex Area

THE STRIVE HI SCHOOL PERFORMANCE REPORT is an annual snapshot of a school's performance on key indicators of student success. This report shows schools' progress on the Department and Board of Education's Strategic Plan and federally-required indicators under the Every Student Succeeds Act. These results help inform action for teachers, principals, community members, and other stakeholders.



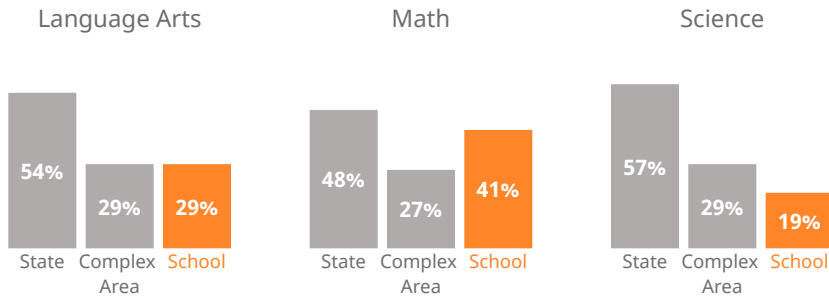
How are students performing in each subject?

Measures the percent of students meeting the standard/who are proficient on state assessments.



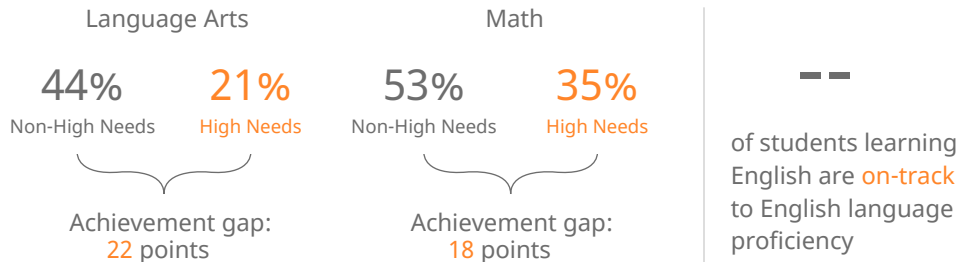
How are students performing compared to others?

Compares the percent of students meeting the standard/who are proficient on state assessments.



How are student subgroups performing?

High Needs: English learners, economically disadvantaged, and students receiving Special Education services. Non-High Needs: All other students.



How are students' academic progress measured?

The Smarter Balanced test shows the relative progress of the average student on state assessments using a Median Growth Percentile (MGP). HSA-Alt & KĀ'EO tests show the percent of students making academic growth each year.

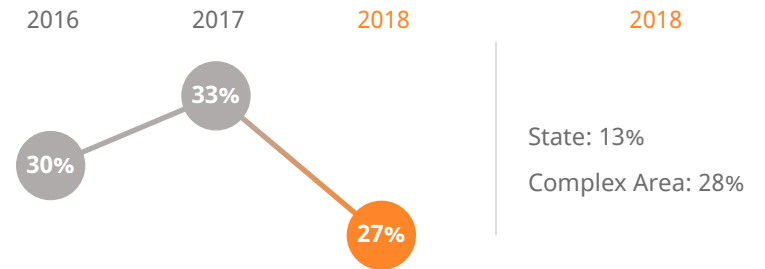


How many 3rd graders read on grade level?

71% of 3rd graders read **near, at, or above** grade level



How many students missed 15 or more days of school this year?



How do students feel about their school?

Measures percent of students reporting positive school climate as measured by the Tripod Student Perception Survey.

57% of students **feel positively** about their school

Nānākuli Elementary

89-778 Haleakala Avenue, Waianae, Hawaii | Oahu | Nanakuli-Waianae Complex Area

Our Story

Nanakuli Elementary School serves the Hawaiian Homesteads of Nanakuli Valley and Princess Kahanu Estates. In addition to instruction in English, a Hawaiian Language Immersion Program provides instruction in the Hawaiian language. We are part of the Nanakuli complex “1:1 initiative” for teachers and students to utilize digital devices for instruction, learning, and assessments throughout the day. Teachers also use interim assessments and other formative assessments to track student progress towards achieving proficiency on the Common Core State Standards, and the data is used to adjust instruction.

Nanakuli Elementary supports the whole child by providing a full time counselor, nurse, and Positive Behavior Support programs such as our “Response to Intervention” programs and the Hawai'i State Comprehensive Student Support System. We are proud to be a RAMP-certified school through the American School Counselor Association and have been granted a full six-year accreditation term (2017-2023) through the Western Association of Schools and Colleges (or WASC.)

Students may participate in leadership groups such as Robotics, Intramurals, DimensionU and Valley of Rainbows. A+ after school care is provided by Kama'aina Kids for students whose parents are working beyond the school day. Parents are also invited to special observations in the classroom and special classroom celebrations when students share their successes.

How do you measure how well a school is doing? In our estimation, it's more than scores on high-stakes tests. Schools should show that they are supporting children along the educational pipeline toward college, career, and community readiness. Are our students attending school? Are they graduating? Are they going to college? And how successfully are schools reducing the achievement gap between high-needs and non-high needs students?

The Strive HI Performance System was designed to account for these factors in student success. Initially created in 2013 by a U.S. Department of Education waiver from certain aspects of the former No Child Left Behind Act, Strive HI has been refocused by the goals and priorities of the 2017-2020 Department of Education and Board of Education Strategic Plan, the governing document for the public education system.

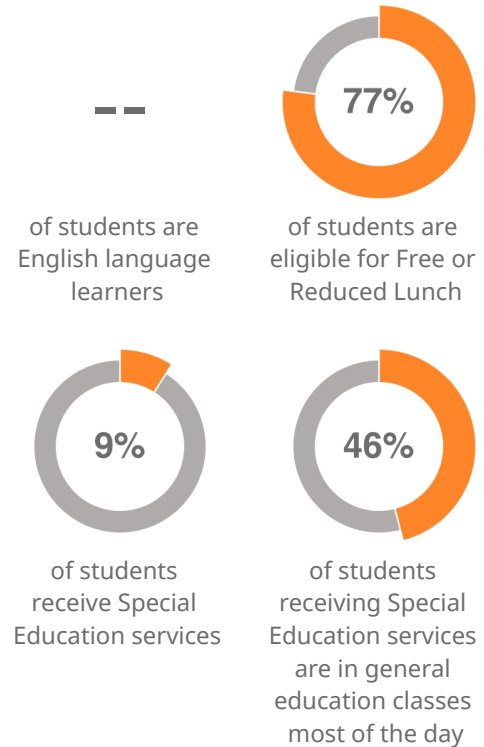
Learn more at <http://bit.ly/StriveHISystem>

About Our School

Principal | Lisa Ann Higa
Grades | K-6
808-307-8600
nes.nwcomplex.org

424

students enrolled





Nānākuli Elementary

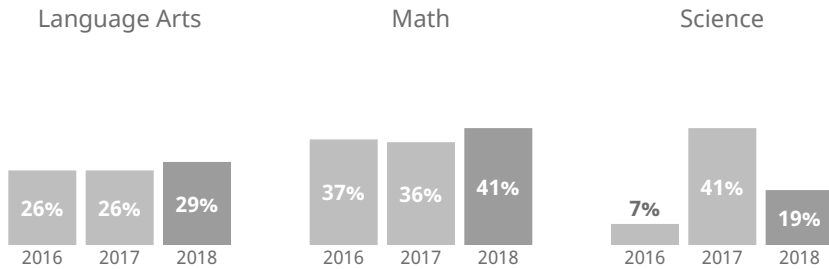
89-778 Haleakala Avenue, Waiānae, Hawaii | Oahu | Nanakuli-Waiānae Complex Area

THE STRIVE HI SCHOOL PERFORMANCE REPORT is an annual snapshot of a school's performance on key indicators of student success. This report shows schools' progress on the Department and Board of Education's Strategic Plan and federally-required indicators under the Every Student Succeeds Act. These results help inform action for teachers, principals, community members, and other stakeholders.



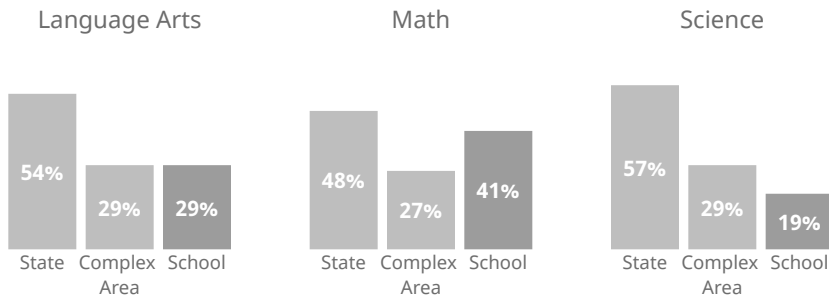
How are students performing in each subject?

Measures the percent of students meeting the standard/who are proficient on state assessments.



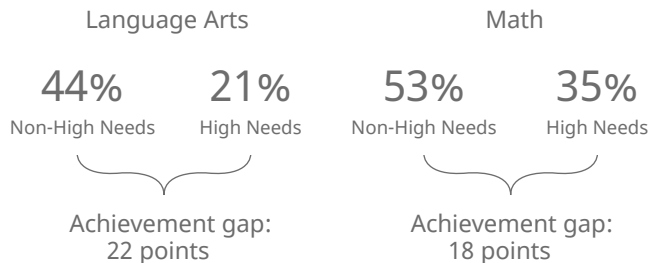
How are students performing compared to others?

Compares the percent of students meeting the standard/who are proficient on state assessments.



How are student subgroups performing?

High Needs: English learners, economically disadvantaged, and students receiving Special Education services. Non-High Needs: All other students.



How are students' academic progress measured?

The Smarter Balanced test shows the relative progress of the average student on state assessments using a Median Growth Percentile (MGP). HSA-Alt & KĀ'EO tests show the percent of students making academic growth each year.

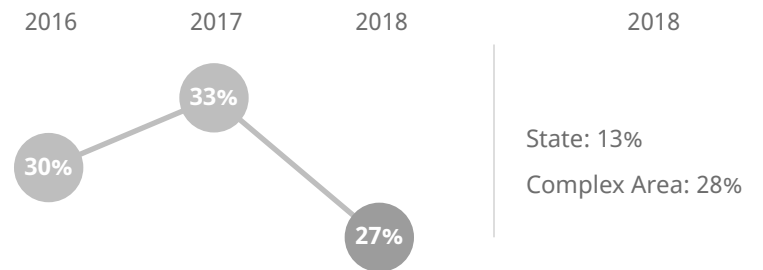


How many 3rd graders read on grade level?

71% of 3rd graders read near, at, or above grade level



How many students missed 15 or more days of school this year?



How do students feel about their school?

Measures percent of students reporting positive school climate as measured by the Tripod Student Perception Survey.

57% of students feel positively about their school

How do you measure how well a school is doing? In our estimation, it's more than scores on high-stakes tests. Schools should show that they are supporting children along the educational pipeline toward college, career, and community readiness. Are our students attending school? Are they graduating? Are they going to college? And how successfully are schools reducing the achievement gap between high-needs and non-high needs students?

The Strive HI Performance System was designed to account for these factors in student success. Initially created in 2013 by a U.S. Department of Education waiver from certain aspects of the former No Child Left Behind Act, Strive HI has been refocused by the goals and priorities of the 2017-2020 Department of Education and Board of Education Strategic Plan, the governing document for the public education system.

Learn more at <http://bit.ly/StriveHISystem>

Nānākuli Elementary

89-778 Haleakala Avenue, Waianae, Hawaii | Oahu | Nanakuli-Waianae Complex Area

Our Story

Nanakuli Elementary School serves the Hawaiian Homesteads of Nanakuli Valley and Princess Kahanu Estates. In addition to instruction in English, a Hawaiian Language Immersion Program provides instruction in the Hawaiian language. We are part of the Nanakuli complex "1:1 initiative" for teachers and students to utilize digital devices for instruction, learning, and assessments throughout the day. Teachers also use interim assessments and other formative assessments to track student progress towards achieving proficiency on the Common Core State Standards, and the data is used to adjust instruction.

Nanakuli Elementary supports the whole child by providing a full time counselor, nurse, and Positive Behavior Support programs such as our "Response to Intervention" programs and the Hawai'i State Comprehensive Student Support System. We are proud to be a RAMP-certified school through the American School Counselor Association and have been granted a full six-year accreditation term (2017-2023) through the Western Association of Schools and Colleges (or WASC.)

Students may participate in leadership groups such as Robotics, Intramurals, DimensionU and Valley of Rainbows. A+ after school care is provided by Kama'aina Kids for students whose parents are working beyond the school day. Parents are also invited to special observations in the classroom and special classroom celebrations when students share their successes.

About Our School

Principal | Lisa Ann Higa

Grades | K-6

808-307-8600

nes.nwcomplex.org

424

students enrolled

