



2015

SUPERINTENDENT'S Annual Report



Office of the Superintendent | 26th Annual Report | April 2016



Rs 16-1217, April 2016



The Honorable David Y. Ige Governor, State of Hawaii

BOARD OF EDUCATION

Lance A. Mizumoto, Chairperson
Brian J. De Lima, Esq., Vice Chairperson

Amy Asselbaye	Hubert Minn
Grant Y.M. Chun	Col. Peter P. Santa Ana (Military Liaison)
Maggie Cox	Jim Williams
Patricia Halagao	Brennan Lee (student representative)
Donald G. Horner	

DEPARTMENT OF EDUCATION

Kathryn S. Matayoshi, Superintendent of Education
Stephen Schatz, Deputy Superintendent

Donna Lum Kagawa
Farrington-Kaiser-Kalani Complex Area Superintendent

Ruth Silberstein
Kaimuki-McKinley-Roosevelt Complex Area Superintendent

John Erickson
Aiea-Moanalua-Radford Complex Area Superintendent

John Brummel, Ed.D.
Leilehua-Mililani-Waialua Complex Area Superintendent

Heidi W. Armstrong
Campbell-Kapolei Complex Area Superintendent

Ann A. Mahi
Nanakuli-Waianae Complex Area Superintendent

Rodney T.O. Luke
Pearl City-Waipahu Complex Area Superintendent

Matt Ho
Castle-Kahuku Complex Area Superintendent

Lanelle Hibbs
Acting Kailua-Kalaheo Complex Area Superintendent

Brad Bennett
Hilo-Waiakea Complex Area Superintendent

Chad Keone Farias
Kau-Keeau-Pahoa Complex Area Superintendent

Arthur Souza
Honokaa-Kealahou-Kohala-Konawaena Complex Area Superintendent

Leila Hayashida
Baldwin-Kekaulike-Maui Complex Area Superintendent

Lindsay Ball
Hana-Lahainaluna-Lanai-Molokai Complex Area Superintendent

William N. Arakaki
Kapaa-Kauai-Waimea Complex Area Superintendent

Suzanne Mulcahy, Assistant Superintendent
Office of Curriculum, Instruction and Student Support

Clyde Sonobe, Assistant Superintendent & Chief Information Officer
Office of Information Technology Services

Amy Kunz, Senior Assistant Superintendent & Chief Financial Officer
Office of Fiscal Services

Col. (Ret.) Dann S. Carlson, Assistant Superintendent
Office of School Facilities and Support Services

Barbara Krieg, Assistant Superintendent
Office of Human Resources

Tammi Chun, Assistant Superintendent
Office of Strategy, Innovation and Performance

Contents

At-A-Glance	1
Table 1. Official Fall Enrollment for Grades K to 12, Public and Private Schools	1
Figure 1. Percent of Public School Students with Special Needs, Unduplicated Count	1
Table 2. Teacher Credentials	1
Table 3. Funding by Source and Year (in millions)	2
Table 4. Safety and Well-Being of Students	2
Table 5. Hawaii Statewide Assessment Program, 2012-2015	2
Table 6. English Language Arts/Literacy, Math, and Science by Grade and Achievement Levels, SY 2014-2015	3
Figure 2. Percent Meeting Standard, 2007-2015 ESEA* English Language Arts, State Summary	4
Figure 3. Percent Meeting Standard, 2007-2015 ESEA* Mathematics, State Summary	4
Figure 4. Percent Proficient, 2013-2015 ESEA* Science, State Summary	4
Table 7. Four-Year Graduation & Dropout Rates	5
Table 8. High School Diplomas	5
Table 9. Advanced Placement (AP) Program	5
Profiles and Trends	6
Table 10. Number of Public Schools (and percentage of total)	6
Table 11. Student Enrollment	6
Table 12. Progress and Completion	6
Table 13. Staff, Full-Time Equivalent Positions	7
Table 14. State Demographics	7
School Finance	8
Table 15. State School Budget	8
Table 16. Key Finance Indicators	8
Figure 5. Percentage of State & Local Expenditures per Capita Supporting Public Schools	9

Educational Assessments	9
Table 17. National Assessment of Educational Progress (NAEP)	9
Figure 6. National Assessment of Educational Progress (NAEP), Grade 4 Reading and Math, 2005-2015.....	10
Figure 7. National Assessment of Educational Progress (NAEP), Grade 8 Reading and Math, 2005-2015.....	10
Table 18. Hawaii Statewide Assessment Program, Percent Meeting Standard.....	11
Figure 8. Strive HI Performance Index and Classification Summary for SY 2014-15	12
Table 19. Students by Complex in SY 2014-15.....	13
Table 20. Teachers by Complex in SY 2014-15.....	14
Table 21. SY 2014-15 Wellness Indicators by Complex (results for participating schools).....	15
Table 22. Percent Meeting Standard on the Hawaii Statewide Assessment Program English Language Arts/Literacy Assessments by Grade and Complex for SY 2014-15	16
Table 23. Percent Meeting Standard on the Hawaii Statewide Assessment Program Mathematics Assessments by Grade and Complex for SY 2014-15.....	17
Table 24. Percent Meets and Exceeds Proficiency on the Hawaii Statewide Assessment Program Science Assessments by Grade and Complex for SY 2014-15.....	18
Appendices	19
Appendix A. Glossary	19
Appendix B. References and Resources	23
Appendix C. Data Tables	27

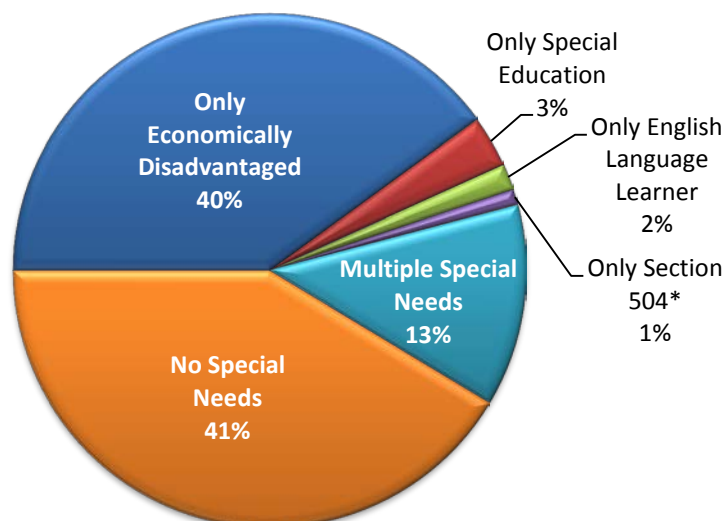
At-A-Glance

Table 1. Official Fall Enrollment for Grades K to 12, Public and Private Schools

	2012-13	2013-14	2014-15
Public schools	183,251	185,273	180,895
<i>% of total enrollment</i>	<i>84.5%</i>	<i>84.8%</i>	<i>84.5%</i>
Department schools	173,658	175,476	170,482
[% of public schools enrollment]	[94.8%]	[94.7%]	[94.2%]
Charter schools	9,593	9,797	10,413
[% of public schools enrollment]	[5.2%]	[5.3%]	[5.8%]
Private Schools	33,610	33,109	33,230
<i>% of total enrollment</i>	<i>15.5%</i>	<i>15.2%</i>	<i>15.5%</i>
Total	216,861	218,382	214,125

Sources: Hawaii State Department of Education: Office of Strategy, Innovation and Performance: Assessment and Accountability Branch: Accountability Section; Hawaii Association of Independent Schools.

Figure 1. Percent of Public School Students with Special Needs, Unduplicated Count



Note: Total may not be exactly 100% due to rounding.

* General education students with a disability which allows them to receive accommodations/modifications.

Source: Hawaii State Department of Education: Office of Strategy, Innovation and Performance: Assessment and Accountability Branch: Accountability Section.

Table 2. Teacher Credentials

	2012-13	2013-14	2014-15
Fully Licensed	97%	97%	96%
Advanced Degree	35%	36%	37%
5+ Years at the Same School	62%	60%	60%

Note: These figures are based on headcount and do not include teachers at charter schools.

Source: Hawaii State Department of Education: Office of Human Resources.

* Unless otherwise noted, "public school" represents both department and charter schools.

Table 3. Funding by Source and Year (in millions)

	2012-13	2013-14	2014-15
Appropriated Funds	\$2,524	\$2,641	\$2,704
State			
General	\$2,110	\$2,263	\$2,332
Special	\$97	\$95	\$95
Trust	\$33	\$24	\$24
Federal	\$285	\$259	\$253
<i>Note: Appropriated Funds include Executive Budget Bill appropriations for the DOE and Public Charter Schools plus actual expenditures made by Department of Budget & Finance (B&F) for both DOE and Public Charter Schools employer's share of the cost of the employees' retirement system and health insurance costs and related debt service. Beginning in FY 2009-10, appropriations for DOE-related retirement benefit payments, health premium payments, and debt service payments were transferred to the B&F. These amounts have continued to be included in the Appropriated Funds on this report for comparability to prior years, as well as to represent the total cost of public education. Total of State and Federal funds may not equal Appropriated Funds due to rounding.</i>			

Source: Hawaii State Department of Education: Office of Fiscal Services.

Table 4. Safety and Well-Being of Students

	2012-13	2013-14	2014-15	
Students Not Suspended*	96%	96%	96%	
<u>Positive Perceptions</u>	<u>Safety and Well-Being**</u>	<u>Safety and Well-Being**</u>	<u>Safety***</u>	<u>Well-Being***</u>
Students				
Elementary	84%	82%	77%	79%
Middle	81%	71%	71%	68%
High	75%	70%	69%	64%
Teachers	93%	85%	79%	77%
<i>* Does not include charter schools</i> <i>** Percent reporting positively on School Quality Survey; does not include "Somewhat Agree" responses</i> <i>*** In 2015, a revised School Quality Survey was administered statewide to students and teachers. The questions and rating scale differ from the SQS administered in previous years and Safety and Well-Being are reported as separate dimensions.</i>				

Source: Hawaii State Department of Education: Office of Strategy, Innovation and Performance: Assessment and Accountability Branch: Accountability Section.

Table 5. Hawaii Statewide Assessment Program, 2012-2015

	2012-13	2013-14	2014-15
	<i>Percent Meeting Standard</i>		
Reading/ELA*	72%	69%	49%
Mathematics*	59%	58%	41%
Science**	34%	40%	42%
<i>Note: Achievement rates are based on all students enrolled on the Participation Rate Count date.</i> <i>* In SY 2012-13, the Hawaii State Assessment (HSA) was administered for Reading and Math to students in grades 3-8 and 10. In SY 2013-14, the Hawai'i State Reading and Mathematics Bridge Assessments were administered to students in grades 3-8 and 10. In SY 2014-15, the Smarter Balanced Assessment (SBA) was administered for English Language Arts/Literacy (ELA) and Math to students in grades 3-8 and 11.</i> <i>** Science proficiency was measured by the HSA Science for grades 4 and 8 and the Biology I End-of-Course Exam and the Hawaii State Alternate Assessment (HSA-Alt) for high school.</i>			

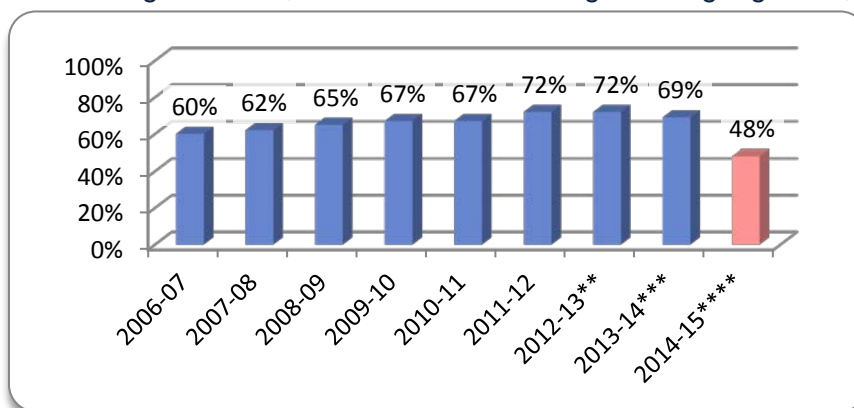
Source: Hawaii State Department of Education: Office of Strategy, Innovation and Performance: Assessment and Accountability Branch: Assessment Section.

Table 6. English Language Arts/Literacy, Math, and Science by Grade and Achievement Levels, SY 2014-2015

ELA %				
Grade	1 (Not met)	2 (Nearly Met)	3 (Met)	4 (Exceeded)
3	27%	26%	23%	24%
4	31%	20%	24%	24%
5	26%	20%	32%	22%
6	25%	28%	32%	15%
7	31%	25%	32%	12%
8	25%	28%	35%	13%
11	22%	25%	33%	20%
Math %				
Grade	1 (Not met)	2 (Nearly Met)	3 (Met)	4 (Exceeded)
3	24%	26%	30%	19%
4	21%	33%	29%	17%
5	29%	29%	21%	21%
6	30%	32%	20%	18%
7	33%	29%	22%	15%
8	34%	26%	21%	18%
11	43%	27%	20%	9%
Science %				
Grade	Well-Below	Approaches	Meets	Exceeds
4	9%	37%	44%	10%
8	24%	40%	30%	6%
HS*	30%	40%	25%	5%
<i>Note: Total may not be exactly 100% due to rounding. Achievement rates are based on all students enrolled on the Participation Rate Count date.</i> <i>* HS (High School) Science proficiency includes results of the Biology I End of Course exam and HSA-Alt</i>				

Source: Hawaii State Department of Education: Office of Strategy, Innovation and Performance: Assessment and Accountability Branch: Assessment Section.

Figure 2. Percent Meeting Standard, 2007-2015 ESEA* English Language Arts, State Summary



* Currently known as Strive HI Performance System; prior to 2013, NCLB/AYP

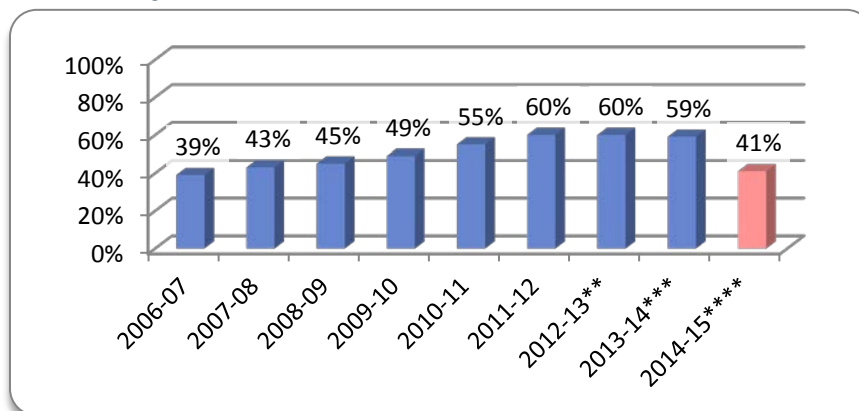
** Prior to 2013, the achievement rate was based on Full Academic Year which overlapped two school years. Beginning 2013, achievement is based on students enrolled for Full School Year.

*** Hawaii State Reading Bridge Assessment was administered to grades 3-8 and 10.

**** Smarter Balanced English Language Arts/Literacy (ELA) Assessment was administered to grades 3-8 and 11.

Source: Hawaii State Department of Education: Office of Strategy, Innovation and Performance: Assessment and Accountability Branch: Assessment Section.

Figure 3. Percent Meeting Standard, 2007-2015 ESEA* Mathematics, State Summary



* Currently known as Strive HI Performance System; prior to 2013, NCLB/AYP

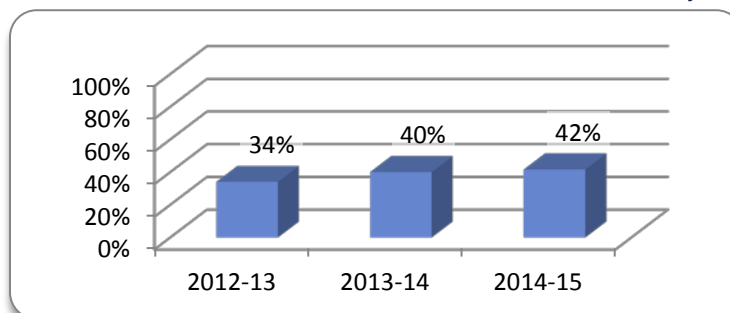
** Prior to 2013, the achievement rate was based on Full Academic Year which overlapped two school years. Beginning 2013, achievement is based on students enrolled for Full School Year.

*** Hawaii State Reading Bridge Assessment was administered to grades 3-8 and 10.

**** Smarter Balanced English Language Arts/Literacy Assessment was administered to grades 3-8 and 11.

Source: Hawaii State Department of Education: Office of Strategy, Innovation and Performance: Assessment and Accountability Branch: Assessment Section.

Figure 4. Percent Proficient, 2013-2015 ESEA* Science, State Summary



* Currently known as Strive HI Performance System. Achievement is based on students enrolled for the Full School Year.

** The percent proficient is based on the results of the HSA Science administered to grades 4 and 8 and the Biology I EOC exam and HSA-AIT for students in high school.

Source: Hawaii State Department of Education: Office of Strategy, Innovation and Performance: Assessment and Accountability Branch: Assessment Section.

Table 7. Four-Year Graduation & Dropout Rates

	2012-13	2013-14	2014-15
Graduation	82.4%	82.1%	81.5%
Dropouts	14.6%	14.5%	14.7%
Others*	3.0%	3.4%	3.8%
<i>Note: Percentages based on preliminary Adjusted Cohort Graduation Rate data. * "Others" include high school completers who received a special education certificate of completion in lieu of a diploma and students who are still attending school and did not graduate within the four-year time frame.</i>			

Source: Hawaii State Department of Education: Office of Strategy, Innovation and Performance: Assessment and Accountability Branch: Accountability Section.

Table 8. High School Diplomas

	2012-13	2013-14	2014-15
BOE Diploma	15.4%	15.4%	13.5%
Regular Diploma	80.4%	80.6%	80.8%
<i>Note: Totals do not sum to 100% because non-diploma (certificate) recipients and non-completers make up the remainder of school completion statistics. These figures do not include the charter schools.</i>			

Source: Hawaii State Department of Education: Office of Strategy, Innovation and Performance: Assessment and Accountability Branch: Accountability Section.

Table 9. Advanced Placement (AP) Program

	2012-13	2013-14	2014-15
Number of students enrolled in AP courses	5,460	5,470	5,677
Number of students who took AP exams	5,155	5,081	5,631
Number of exams taken	7,382	7,402	8,270
Number of AP exam results with a score of 3 or higher	2,819	3,013	3,383
Percent of exams passed	38%	41%	42%

Source: Hawaii State Department of Education: Office of Curriculum, Instruction and Student Support.

Profiles and Trends

Table 10. Number of Public Schools (and percentage of total)

	2012-13		2013-14		2014-15	
Total	286	100%	288	100%	289	100%
Elementary	166	58%	167	58%	167	58%
Middle/Intermediate	38	13%	38	13%	38	13%
High	33	12%	33	11%	33	11%
Multi-Level	16	6%	16	6%	16	6%
Charter	32	11%	33	11%	34	12%
Special	1	<1%	1	<1%	1	<1%
Complex Areas	15		15		15	

Note: Totals may not be exactly 100% due to rounding.

Source: Hawaii State Department of Education: Office of Strategy, Innovation and Performance: Assessment and Accountability Branch: Accountability Section.

Table 11. Student Enrollment

	2012-13		2013-14		2014-15	
Official Enrollment Count	183,251	100%	185,273	100%	180,895	100%
K-6	105,396	58%	107,920	58%	103,287	57%
7-8	26,564	14%	26,324	14%	26,349	15%
9-12	51,291	28%	51,029	28%	51,259	28%
Special Education (SPED)	17,782	10%	17,741	10%	17,350	10%
English Language Learner (ELL)	13,885	8%	13,501	7%	12,144	7%
Economically Disadvantaged	93,476	51%	94,315	51%	91,388	51%

Note: Totals may not be exactly 100% due to rounding.

Source: Hawaii State Department of Education: Office of Strategy, Innovation and Performance: Assessment and Accountability Branch: Accountability Section.

Table 12. Progress and Completion

	2012-13	2013-14	2014-15
Daily Average Attendance Rates			
Elementary	94.2%	94.5%	94.9%
Middle/Intermediate	94.4%	94.6%	94.5%
High	92.1%	92.4%	92.8%
Multi-level	94.2%	92.5%	91.7%
Charter	93.3%	93.5%	93.3%
Retention Rates			
Elementary	<0.5%	<0.5%	<0.5%
Middle/Intermediate	1.0%	1.0%	0.9%
Graduation Rate* (on time) Grades 9 through 12	82.4%	82.1%	81.5%
Drop Out Rate Grades 9 through 12	14.6%	14.5%	14.7%
Others** Grades 9 through 12	3.0%	3.4%	3.8%

* Percentages based on preliminary Adjusted Cohort Graduation Rate data.

** "Others" include high school completers who received a special education certificate of completion in lieu of a diploma and students who are still attending school and did not graduate within the four-year time frame.

Source: Hawaii State Department of Education: Office of Strategy, Innovation and Performance: Assessment and Accountability Branch: Accountability Section.

Table 13. Staff, Full-Time Equivalent Positions

	2012-13	2013-14	2014-15
Classroom Teachers	11,147.8	11,106.0	10,941.5
Librarians	185.0	181.0	170.5
Counselors	606.4	606.0	602.5
Administrators			
School	523.0	541.0	593.0
State & Complex Area	230.0	231.0	251.0
Other Support Staff	8,590.0	8,638.5	8,674.6
Total	21,282.2	21,303.5	21,233.1

Source: Hawaii State Department of Education: Office of Strategy, Innovation and Performance: Assessment and Accountability Branch: Accountability Section.

Table 14. State Demographics

	2010 Census	2013 Est.	2014 Est.
Population	1,360,301	1,404,054	1,419,561
Under 5 yrs	87,407	90,706	91,480
5-9	83,361	81,291	86,283
10-14	81,539	86,759	82,802
15-19	85,994	80,269	80,091
Median Age, in years	38.6	38.1	38.1
Households			
Total	455,338	450,120	450,769
Families	313,907	311,203	314,151
Avg. Family Size	3.4	3.6	3.6
Income			
Median Family Income	\$76,134*	\$80,316**	\$79,187***
Per Capita Income	\$28,882*	\$29,577**	\$29,736***
Poverty, Families in	6.7%	7.1%	7.8%
Educational Attainment			
Percent high school or higher	89.9%	91.0%	91.7%
Percent 4-yr degree or higher	29.5%	31.2%	31.0%
* 2010 inflation-adjusted dollars.			
** 2013 inflation-adjusted dollars.			
*** 2014 inflation-adjusted dollars.			

Source: U.S. Census Bureau, American Community Survey.

School Finance

Table 15. State School Budget

	2012-13	2013-14	2014-15
APPROPRIATED FUNDS (millions)			
State			
General	\$2,110	\$2,263	\$2,332
Special	\$97	\$95	\$95
Trust	\$33	\$24	\$24
Federal	\$285	\$259	\$253
Total	\$2,524	\$2,641	\$2,704
EXPENDITURES (millions)			
State			
General	\$2,070	\$2,225	\$2,286
Special	\$56	\$40	\$49
Trust	\$7	\$8	\$20
Federal	\$279	\$289	\$231
Total	\$2,412	\$2,562	\$2,586
<p><i>Note: Appropriated Funds include Executive Budget Bill appropriations for the DOE and Public Charter Schools plus actual expenditures made by Department of Budget & Finance (B&F) for both DOE and Public Charter Schools employer's share of the cost of the employees' retirement system and health insurance costs and related debt service. Beginning in FY 2009-10, appropriations for DOE-related retirement benefit payments, health premium payments, and debt service payments were transferred to the B&F. These amounts have continued to be included in the Appropriated Funds on this report for comparability to prior years, as well as to represent the total cost of public education. Expenditures include both expenditures and encumbrances for the DOE and Public Charter Schools.</i></p> <p><i>Total of State and Federal funds may not equal Appropriated Funds due to rounding.</i></p>			

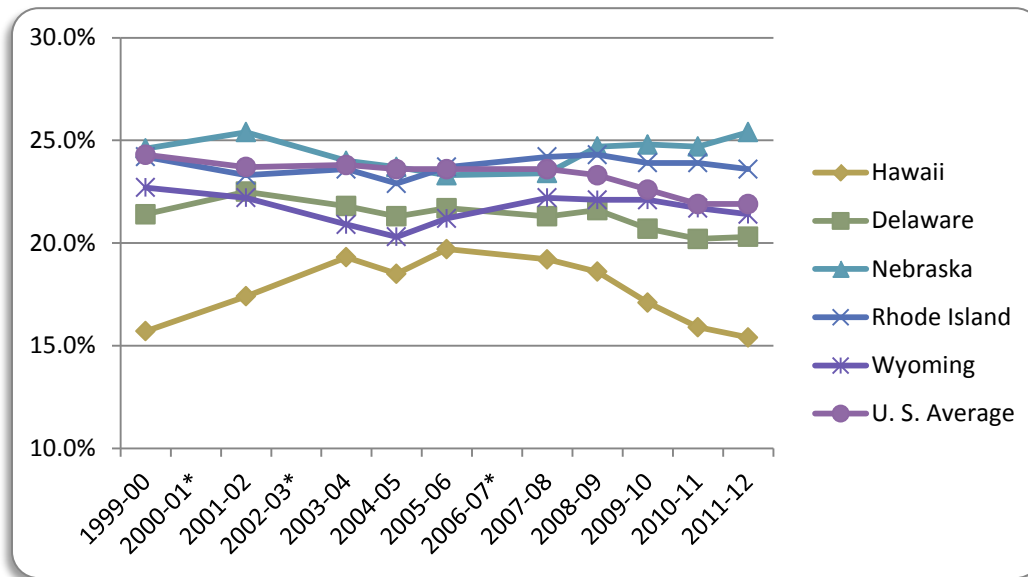
Source: Hawaii State Department of Education: Office of Fiscal Services.

Table 16. Key Finance Indicators

	2009-10	2010-11	2011-12
Key Finance Indicators			
Per pupil expenditure*	\$11,855	\$11,924	\$11,973
Percent state & local expenditures for public education (per capita)	17.1%	15.9%	15.4%
Rank**	50th	50th	50th
<p>* Figures are as reported in the 2014 Digest of Education Statistics and may have been updated from previous reports.</p> <p>** Rank is determined by comparing the "Percent state and local expenditures for public education (per capita)" of Hawaii to that of the other 49 states.</p>			

Sources: U.S. Census Bureau; National Center for Education Statistics.

Figure 5. Percentage of State & Local Expenditures per Capita Supporting Public Schools



* No data available

Note: Comparisons are made with states most similar to Hawaii on measures directly related to school finance. Measures include K-12 enrollment, population, per capita income, per capita state and local revenue, and per capita state and local expenditures.

Source: National Center for Education Statistics

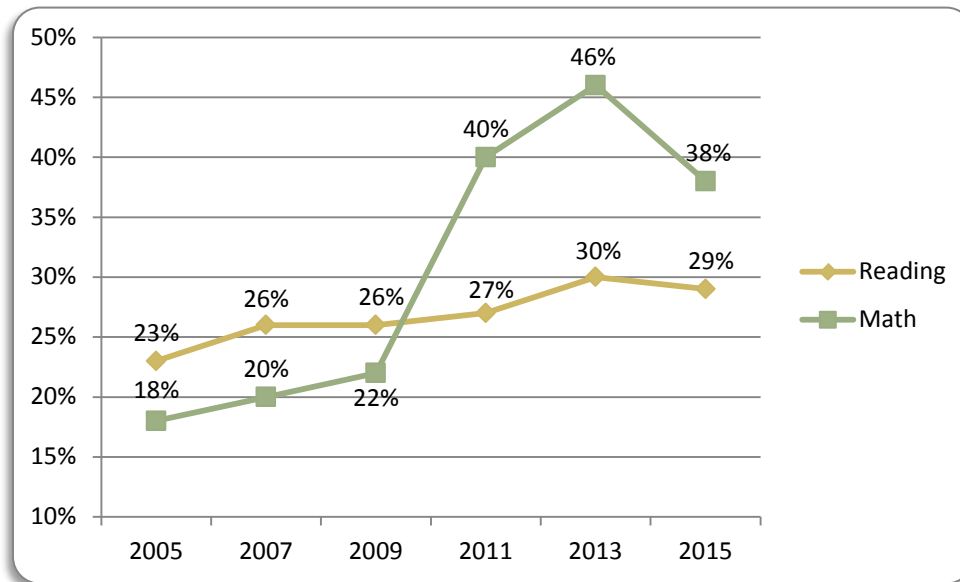
Educational Assessments

Table 17. National Assessment of Educational Progress (NAEP)

2011			2013		2015	
(Percent Proficient & Advanced)						
	<u>Hawaii</u>	<u>Nation</u>	<u>Hawaii</u>	<u>Nation</u>	<u>Hawaii</u>	<u>Nation</u>
Reading						
Grade 4	27%	32%	30%	34%	29%	35%
Grade 8	26%	32%	28%	34%	26%	33%
Mathematics						
Grade 4	40%	40%	46%	41%	38%	39%
Grade 8	30%	34%	32%	34%	30%	32%
Science						
Grade 4	--	--	--	--	--	--
Grade 8	22%	31%	--	--	--	--

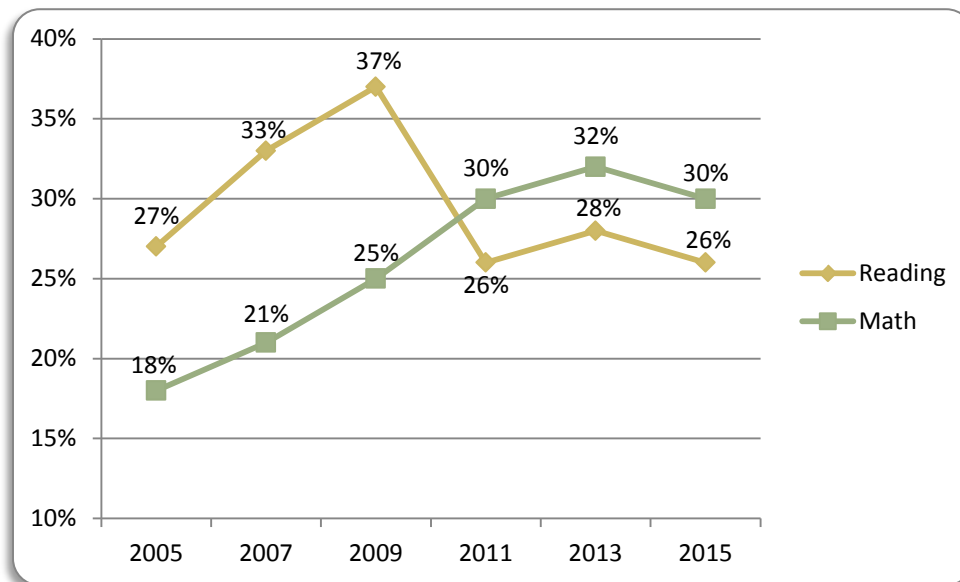
Source: Hawaii State Department of Education: Office of Strategy, Innovation and Performance: Assessment and Accountability Branch: Accountability Section.

Figure 6. National Assessment of Educational Progress (NAEP), Grade 4 Reading and Math, 2005-2015



Source: Hawaii State Department of Education: Office of Strategy, Innovation and Performance: Assessment and Accountability Branch: Accountability Section.

Figure 7. National Assessment of Educational Progress (NAEP), Grade 8 Reading and Math, 2005-2015



Source: Hawaii State Department of Education: Office of Strategy, Innovation and Performance: Assessment and Accountability Branch: Accountability Section.

Table 18. Hawaii Statewide Assessment Program, Percent Meeting Standard

	2011-12			2012-13		
	All Schools	Department Schools Only	Charter Schools Only	All Schools	Department Schools Only	Charter Schools Only
	Reading			Reading		
Grade 3	71.7%	72.4%	57.8%	71.9%	72.4%	63.4%
Grade 4	73.1%	73.8%	60.4%	74.2%	74.6%	66.4%
Grade 5	72.2%	72.6%	65.1%	73.1%	73.4%	69.0%
Grade 6	76.5%	77.2%	70.2%	74.6%	74.6%	74.6%
Grade 7	70.8%	70.4%	75.3%	72.5%	72.2%	77.7%
Grade 8	72.7%	72.5%	75.1%	73.7%	73.5%	77.7%
Grade 10	71.1%	70.9%	76.4%	70.5%	70.3%	76.2%
	Mathematics			Mathematics		
Grade 3	69.4%	70.3%	53.0%	68.4%	69.0%	58.6%
Grade 4	65.3%	66.1%	48.5%	66.8%	67.5%	55.1%
Grade 5	64.7%	65.2%	55.2%	62.6%	63.2%	52.8%
Grade 6	62.4%	63.8%	49.2%	60.6%	60.9%	56.5%
Grade 7	58.3%	58.9%	51.8%	56.5%	57.2%	45.4%
Grade 8	60.7%	61.4%	48.1%	60.3%	61.0%	49.7%
Grade 10	47.4%	47.5%	41.6%	46.9%	47.1%	42.6%
				Science		
Grade 4				44.6%	45.1%	34.5%
Grade 8				29.4%	29.2%	33.2%
HS***				24.0%	24.0%	27.8%
	2013-14			2014-15		
	All Schools	Department Schools Only	Charter Schools Only	All Schools	Department Schools Only	Charter Schools Only
	Reading			English Language Arts/Literacy		
Grade 3	65.1%	65.1%	64.0%	46.6%	46.9%	40.6%
Grade 4	70.3%	70.8%	62.3%	48.2%	48.6%	42.2%
Grade 5	68.8%	68.9%	66.1%	53.9%	54.4%	46.1%
Grade 6	70.1%	70.1%	70.0%	46.8%	47.0%	43.0%
Grade 7	70.0%	69.8%	73.0%	43.9%	43.6%	48.8%
Grade 8	71.7%	71.3%	77.1%	46.8%	46.7%	48.9%
Grade 10	67.7%	67.3%	77.0%			
Grade 11				52.8%	52.8%	54.7%
	Mathematics			Mathematics		
Grade 3	63.1%	63.1%	62.7%	49.7%	49.9%	44.5%
Grade 4	62.4%	62.9%	54.2%	46.2%	46.3%	44.0%
Grade 5	64.7%	65.2%	55.3%	42.3%	42.7%	35.0%
Grade 6	54.9%	55.4%	48.1%	38.2%	38.7%	30.8%
Grade 7	55.2%	55.4%	52.1%	37.6%	37.8%	35.3%
Grade 8	59.1%	60.0%	45.8%	39.1%	39.7%	31.6%
Grade 10	42.4%	42.5%	38.5%			
Grade 11				29.5%	29.7%	23.4%
	Science			Science		
Grade 4	52.9%	53.5%	41.9%	53.9%	54.4%	45.1%
Grade 8	34.8%	34.8%	35.2%	36.7%	36.9%	33.5%
HS***	30.2%	29.9%	37.3%	30.6%	30.7%	27.6%

Note: Achievement rates are based on all students tested.

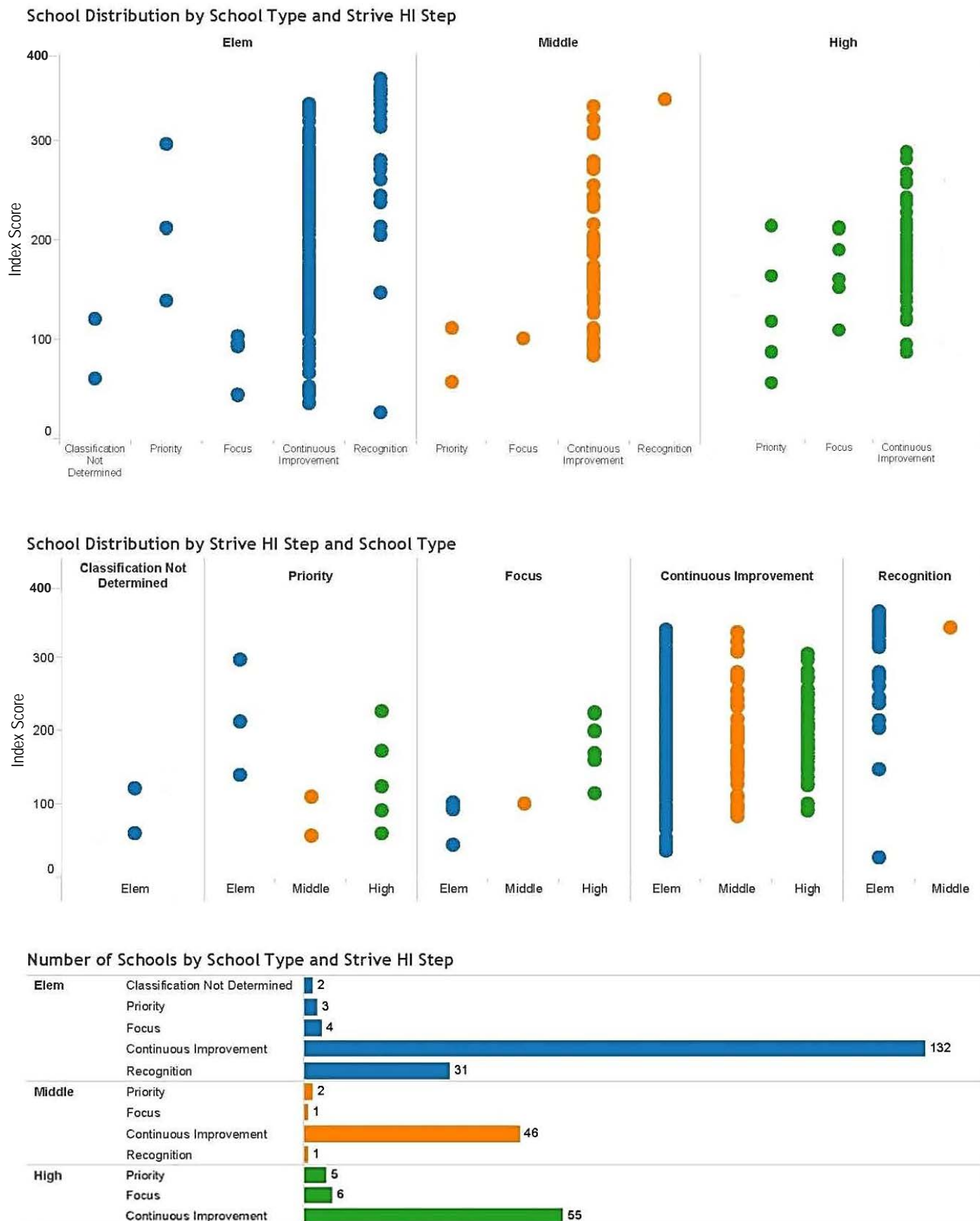
* Hawaii's State Reading and Mathematics Bridge Assessments were administered in SY 2013-14.

** Smarter Balanced English Language Arts/Literacy (ELA) and Mathematics Assessments were administered in SY 2014-15.

*** HS (High School) Science proficiency includes results for the Biology I End of Course exam and HSA-Alt

Source: Hawaii State Department of Education: Office of Strategy, Innovation and Performance: Data Governance and Analysis Branch.

Figure 8. Strive HI Performance Index and Classification Summary for SY 2014-15



Source: Hawaii State Department of Education: Office of Strategy, Innovation and Performance: Data Governance and Analysis Branch;
<http://www.hawaiipublicschools.org/VisionForSuccess/AdvancingEducation/StriveHIPerformanceSystem/Pages/home.aspx>.

Table 19. Students by Complex in SY 2014-15

	Enrollment*	Economically Disadvantaged	Special Education	ELL	Graduated on-time
ALL SCHOOLS	180,895	91,388	17,350	12,144	82%
Department Schools	170,482	85,942	16,551	11,895	82%
HONOLULU: 2 Complex Areas / 6 Complexes					
Farrington	7,761	71%	8%	20%	77%
Kaiser	3,854	16%	8%	3%	91%
Kalani	4,251	23%	8%	6%	90%
Kaimuki	4,242	59%	11%	17%	63%
McKinley	4,416	69%	8%	22%	74%
Roosevelt	5,911	40%	8%	5%	88%
CENTRAL: 2 Complex Areas / 6 Complexes					
Aiea	4,117	49%	10%	6%	88%
Moanalua	5,056	30%	8%	4%	93%
Radford	6,245	31%	9%	3%	93%
Leilehua	7,813	56%	11%	5%	81%
Mililani	7,848	21%	9%	1%	92%
Waiialua	1,396	51%	9%	4%	86%
LEEWARD: 3 Complex Areas / 6 Complexes					
Campbell	10,730	46%	7%	4%	88%
Kapolei	6,265	40%	9%	2%	84%
Nanakuli	2,316	81%	17%	5%	73%
Waianae	5,781	78%	13%	5%	74%
Pearl City	6,306	36%	9%	3%	79%
Waipahu	8,413	60%	8%	15%	81%
WINDWARD: 2 Complex Areas / 4 Complexes					
Castle	4,712	48%	14%	2%	83%
Kahuku	3,420	51%	10%	3%	83%
Kailua	2,723	53%	13%	2%	73%
Kalaheo	3,753	20%	10%	2%	88%
HAWAII: 3 Complex Areas / 10 Complexes					
Hilo	4,061	67%	14%	5%	74%
Waiakea	3,530	54%	11%	2%	86%
Kau	935	88%	11%	19%	81%
Keaau	2,782	81%	13%	8%	81%
Pahoa	1,725	85%	14%	4%	72%
Honokaa	1,763	65%	12%	6%	82%
Kealahou	4,965	60%	9%	13%	73%
Kohala	796	65%	15%	3%	84%
Konawaena	2,318	70%	9%	8%	80%
MAUI: 2 Complex Areas / 7 Complexes					
Baldwin	4,457	50%	8%	5%	81%
Kekaulike	4,084	54%	11%	3%	74%
Maui	7,411	50%	8%	11%	77%
Hana	341	77%	12%	0%	82%
Lahainaluna	3,146	49%	9%	15%	78%
Lanai	567	41%	15%	11%	83%
Molokai	944	76%	12%	3%	86%
KAUAI: 1 Complex Area / 3 Complexes					
Kapaa	3,146	51%	10%	4%	93%
Kauai	3,846	46%	8%	6%	82%
Waimea	2,283	53%	10%	5%	84%
SPECIAL					
Hawaii School for Deaf & Blind	53	68%	100%	34%	43%
Charter Schools	10,413	5,446	799	249	65%

* Based on the Fall 2014 Official Enrollment Count.

Source: Hawaii State Department of Education: Office of Strategy, Innovation and Performance: Assessment and Accountability Branch: Accountability Section.

Table 20. Teachers by Complex in SY 2014-15

		Classroom Teachers (headcount)	Fully Licensed	5+ Years at same School	Advanced Degree	Average Years Teaching Experience
ALL SCHOOLS		11,182	10,794	6,678	4,150	13.3
Department Schools		10,864	10,482 96%	6,510 60%	3,994 37%	13.4
HONOLULU	Farrington	497	98%	63%	38%	14.0
	Kaiser	222	99%	62%	39%	13.9
	Kalani	243	99%	61%	46%	13.8
	Kaimuki	292	99%	67%	37%	16.0
	McKinley	286	100%	58%	42%	14.5
	Roosevelt	359	98%	66%	37%	14.5
CENTRAL	Aiea	245	94%	64%	37%	14.2
	Moanalua	303	99%	64%	44%	13.9
	Radford	392	99%	66%	32%	14.3
	Leilehua	528	96%	59%	41%	13.4
	Mililani	466	97%	70%	38%	14.4
	Waialua	88	94%	66%	38%	13.9
LEEWARD	Campbell	643	95%	53%	36%	11.7
	Kapolei	383	98%	56%	38%	12.3
	Pearl City	397	97%	71%	33%	15.1
	Waipahu	526	97%	67%	34%	14.1
	Nanakuli	166	91%	43%	39%	10.2
	Waianae	408	86%	48%	28%	10.1
WINDWARD	Castle	319	99%	61%	34%	14.9
	Kahuku	229	98%	65%	32%	13.9
	Kailua	227	97%	59%	38%	12.7
	Kalaheo	245	98%	50%	45%	12.8
HAWAII	Hilo	267	100%	66%	33%	15.1
	Waiakea	225	100%	61%	31%	14.8
	Kau	69	80%	35%	32%	7.4
	Keaau	177	98%	64%	35%	14.2
	Pahoa	114	96%	46%	42%	13.0
	Honokaa	114	93%	53%	39%	13.1
	Kealahou	305	91%	59%	35%	12.2
	Kohala	62	92%	53%	44%	12.8
	Konawaena	156	88%	49%	31%	11.7
MAUI	Baldwin	259	99%	54%	38%	13.1
	Kekaulike	255	98%	63%	38%	14.1
	Maui	457	98%	63%	38%	12.4
	Hana	29	86%	62%	31%	12.1
	Lahainaluna	199	97%	58%	43%	11.1
	Lanai	43	81%	44%	26%	10.3
	Molokai	74	99%	74%	34%	14.0
KAUAI	Kapaa	192	95%	53%	33%	13.1
	Kauai	240	94%	56%	35%	12.7
	Waimea	148	98%	61%	40%	13.9
SPECIAL						
Hawaii School for Deaf & Blind		15	67%	13%	80%	5.2
Charter Schools		318	312 98%	168 54%	156 93%	10.4

Source: Hawaii State Department of Education: Office of Strategy, Innovation and Performance: Assessment and Accountability Branch: Accountability Section.

Table 21. SY 2014-15 Wellness Indicators by Complex (results for participating schools)

	Number of Participating Schools	Participation Rate (of total public school count)	Schools with a Wellness Committee	All Food & Beverages Sold Met Compliance	Required Health Ed Classes Met Recommended Minutes	Required PE Classes Met Recommended Minutes	≥20 Minutes Recess Per Day	Average % of Wellness Guidelines Met
STATE OVERALL	239	94%	78%	40%	79%	85%	84%	82%
Aiea-Moanalua-Radford	22	100%	82%	41%	73%	68%	86%	83%
Aiea Complex	7	100%	100%	57%	71%	71%	71%	87%
Moanalua Complex	6	100%	67%	50%	67%	67%	83%	84%
Radford Complex	9	100%	78%	22%	78%	67%	100%	79%
Baldwin-Kekaulike-Maui	19	95%	80%	35%	90%	85%	70%	81%
Baldwin Complex	4	80%	60%	60%	80%	100%	80%	79%
Kekaulike Complex	7	100%	71%	0%	100%	86%	43%	78%
Maui Complex	8	100%	100%	50%	88%	75%	88%	84%
Campbell-Kapolei	16	100%	63%	38%	56%	75%	69%	75%
Campbell Complex	10	100%	60%	30%	40%	60%	70%	72%
Kapolei Complex	6	100%	67%	50%	83%	100%	67%	79%
Castle-Kahuku	16	100%	100%	38%	88%	100%	94%	90%
Castle Complex	10	100%	100%	50%	80%	100%	100%	89%
Kahuku Complex	6	100%	100%	17%	100%	100%	83%	92%
Farrington-Kaiser-Kalani	25	100%	68%	36%	88%	96%	88%	83%
Farrington Complex	12	100%	42%	17%	83%	92%	92%	78%
Kaiser Complex	6	100%	100%	17%	83%	100%	83%	83%
Kalani Complex	7	100%	86%	86%	100%	100%	86%	94%
Hana-Lahainaluna-Lanai-Molokai	9	92%	78%	22%	89%	89%	78%	77%
Hana Complex	1	100%	100%	100%	100%	100%	100%	91%
Lahainaluna Complex	3	75%	33%	33%	100%	100%	33%	69%
Lanai Complex	0	0%	--	--	--	--	--	--
Molokai Complex	5	100%	100%	0%	80%	80%	100%	80%
Hilo-Laupahoehoe-Waiakea	7	54%	43%	71%	57%	100%	86%	83%
Hilo Complex	6	67%	50%	67%	50%	100%	83%	83%
Waiakea Complex	1	25%	0%	100%	100%	100%	100%	83%
Honokaa-Kealakehe-Kohala-Konawaena	19	100%	47%	32%	84%	95%	100%	79%
Honokaa Complex	4	100%	25%	50%	75%	100%	100%	82%
Kealakehe Complex	6	100%	50%	67%	83%	100%	100%	82%
Kohala Complex	3	100%	67%	0%	100%	100%	100%	78%
Konawaena Complex	6	100%	50%	0%	83%	83%	100%	74%
Kailua-Kalaheo	13	93%	100%	54%	77%	77%	77%	86%
Kailua Complex	7	88%	100%	43%	86%	86%	86%	89%
Kalaheo Complex	6	100%	100%	67%	67%	67%	67%	83%
Kaimuki-McKinley-Roosevelt	26	93%	85%	39%	92%	96%	77%	82%
Kaimuki Complex	9	90%	78%	44%	100%	100%	78%	84%
McKinley Complex	8	100%	88%	50%	75%	88%	75%	79%
Roosevelt Complex	9	90%	89%	22%	100%	100%	78%	81%
Kapaa-Kauai-Waimea	16	100%	63%	31%	50%	63%	81%	77%
Kapaa Complex	5	100%	80%	20%	60%	60%	80%	75%
Kauai Complex	5	100%	40%	40%	60%	60%	80%	80%
Waimea Complex	6	100%	67%	33%	33%	67%	83%	75%
Kau-Keaau-Pahoa	7	78%	86%	43%	71%	71%	100%	86%
Kau Complex	1	50%	100%	0%	0%	0%	100%	73%
Keaau Complex	3	75%	67%	33%	100%	100%	100%	87%
Pahoa Complex	3	100%	100%	67%	67%	67%	100%	90%
Leilehua-Mililani-Waialua	18	90%	94%	39%	78%	89%	83%	86%
Leilehua Complex	10	100%	100%	40%	70%	90%	90%	86%
Mililani Complex	5	71%	100%	60%	100%	100%	80%	89%
Waialua Complex	3	100%	67%	0%	67%	67%	67%	81%
Nanakuli-Waianae	9	100%	89%	33%	78%	78%	89%	84%
Nanakuli Complex	3	100%	100%	33%	100%	100%	100%	96%
Waianae Complex	6	100%	83%	33%	67%	67%	83%	78%
Pearl City-Waipahu	17	100%	94%	65%	77%	77%	88%	86%
Pearl City Complex	10	100%	100%	90%	80%	70%	100%	90%
Waipahu Complex	7	100%	86%	29%	71%	86%	71%	80%

Source: Hawaii State Department of Health.

Table 22. Percent Meeting Standard on the Hawaii Statewide Assessment Program English Language Arts/Literacy Assessments by Grade and Complex for SY 2014-15

District	Complex Area	Complex	3	4	5	6	7	8	11	All Tested Grades
ALL SCHOOLS			47%	48%	54%	47%	44%	47%	53%	48%
Department Schools			47%	49%	54%	47%	44%	47%	53%	48%
Honolulu	Farrington-Kaiser-Kalani	Farrington	33%	29%	41%	28%	29%	36%	52%	35%
		Kaiser	66%	71%	74%	76%	72%	76%	52%	70%
		Kalani	77%	79%	73%	70%	60%	60%	70%	70%
	Kaimuki-McKinley-Roosevelt	Kaimuki	45%	49%	51%	40%	43%	43%	54%	46%
		McKinley	38%	42%	54%	20%	31%	24%	53%	42%
		Roosevelt	69%	72%	76%	53%	56%	59%	76%	65%
Central	Aiea-Moanalua-Radford	Aiea	54%	43%	53%	51%	54%	59%	54%	52%
		Moanalua	57%	57%	59%	63%	68%	79%	76%	67%
		Radford	51%	59%	65%	66%	41%	49%	63%	56%
	Leilehua-Mililani-Waialua	Leilehua	51%	49%	58%	42%	48%	46%	54%	50%
		Mililani	70%	72%	75%	62%	59%	69%	66%	68%
		Waialua	63%	58%	47%	65%	31%	29%	39%	47%
Leeward	Campbell-Kapolei	Campbell	41%	44%	52%	45%	50%	48%	51%	47%
		Kapolei	34%	39%	50%	49%	45%	43%	50%	44%
	Nanakuli-Waianae	Nanakuli	20%	19%	16%	29%	20%	18%	32%	22%
		Waianae	25%	28%	27%	29%	24%	23%	30%	26%
	Pearl City-Waipahu	Pearl City	60%	61%	66%	66%	54%	52%	68%	61%
		Waipahu	35%	31%	34%	45%	31%	35%	47%	37%
Windward	Castle-Kahuku	Castle	55%	60%	62%	58%	33%	46%	57%	53%
		Kahuku	52%	53%	54%	57%	11%	19%	31%	43%
	Kailua-Kalaheo	Kailua	57%	60%	62%	54%	31%	29%	51%	54%
		Kalaheo	58%	64%	63%	68%	64%	60%	55%	62%
Hawaii	Hilo-Waiakea	Hilo	40%	46%	45%	48%	42%	48%	46%	45%
		Waiakea	42%	46%	51%	39%	62%	52%	50%	49%
	Honokaa-Kealakehe-Kohala-Konaweana	Honokaa	32%	28%	50%	40%	32%	35%	54%	38%
		Kealakehe	38%	45%	49%	31%	30%	37%	52%	40%
		Kohala	30%	22%	52%	35%	25%	46%	50%	35%
		Konawaena	41%	41%	52%	42%	43%	50%	45%	45%
	Kau-Keaau-Pahoa	Kau	7%	26%	22%	25%	20%	29%	22%	22%
		Keaau	44%	41%	49%	30%	26%	36%	40%	38%
		Pahoa	30%	39%	44%	49%	36%	37%	52%	40%
Maui	Baldwin-Kekaulike-Maui	Baldwin	38%	44%	52%	37%	40%	43%	54%	44%
		Kekaulike	46%	50%	58%	27%	43%	47%	47%	46%
		Maui	50%	55%	60%	43%	42%	45%	55%	50%
	Hana-Lahainaluna-Lanai-Molokai	Hana	42%	50%	40%	25%	30%	45%	29%	39%
		Lahainaluna	43%	44%	60%	35%	35%	26%	42%	41%
		Lanai	35%	50%	29%	43%	16%	39%	na	37%
		Molokai	29%	41%	46%	60%	32%	40%	37%	39%
Kauai	Kapaa-Kauai-Waimea	Kapaa	37%	39%	49%	37%	39%	44%	33%	39%
		Kauai	51%	46%	59%	34%	40%	41%	28%	43%
		Waimea	41%	44%	50%	41%	21%	30%	49%	41%
Special	Hawaii School for Deaf & Blind	Kalani	na	na	na	na	na	na	na	10%
Charter Schools			41%	42%	46%	43%	49%	49%	55%	46%

Note: Achievement rates are based on all students who were administered either the Smarter Balanced ELA/Literacy Assessment or the HSA-Alt.

na = Data not reported to maintain student confidentiality (see FERPA).

Source: Hawaii State Department of Education: Office of Strategy, Innovation and Performance: Data Governance and Analysis Branch.

Table 23. Percent Meeting Standard on the Hawaii Statewide Assessment Program Mathematics Assessments by Grade and Complex for SY 2014-15

District	Complex Area	Complex	3	4	5	6	7	8	11	All Tested Grades
ALL SCHOOLS			50%	46%	42%	38%	38%	39%	29%	41%
Department Schools			50%	46%	43%	39%	38%	40%	30%	41%
Honolulu	Farrington-Kaiser-Kalani	Farrington	35%	29%	31%	25%	25%	31%	27%	29%
		Kaiser	71%	68%	64%	73%	66%	67%	39%	65%
		Kalani	79%	75%	60%	63%	60%	70%	43%	65%
	Kaimuki-McKinley-Roosevelt	Kaimuki	48%	43%	43%	29%	35%	42%	21%	39%
		McKinley	46%	41%	41%	12%	19%	21%	42%	38%
		Roosevelt	68%	68%	62%	47%	48%	47%	44%	55%
Central	Aiea-Moanalua-Radford	Aiea	62%	41%	37%	41%	50%	48%	23%	44%
		Moanalua	60%	50%	44%	46%	53%	56%	39%	49%
		Radford	53%	53%	47%	56%	29%	33%	31%	45%
	Leilehua-Mililani-Waialua	Leilehua	52%	46%	43%	35%	40%	41%	37%	43%
		Mililani	74%	72%	62%	50%	52%	52%	55%	60%
		Waialua	70%	54%	37%	64%	29%	22%	23%	43%
Leeward	Campbell-Kapolei	Campbell	41%	39%	35%	37%	35%	35%	27%	36%
		Kapolei	37%	35%	42%	45%	44%	40%	24%	38%
	Nanakuli-Waianae	Nanakuli	28%	20%	10%	26%	11%	10%	11%	17%
		Waianae	30%	29%	23%	22%	22%	32%	12%	25%
	Pearl City-Waipahu	Pearl City	65%	61%	59%	63%	57%	52%	41%	58%
		Waipahu	38%	34%	32%	41%	29%	36%	27%	34%
Windward	Castle-Kahuku	Castle	53%	49%	42%	40%	42%	37%	27%	42%
		Kahuku	58%	51%	39%	51%	30%	27%	23%	42%
	Kailua-Kalaheo	Kailua	56%	55%	50%	43%	33%	15%	17%	43%
		Kalaheo	68%	56%	49%	49%	52%	55%	28%	52%
Hawaii	Hilo-Laupahoehoe-Waiakea	Hilo	42%	45%	37%	41%	45%	45%	25%	40%
		Waiakea	43%	47%	40%	28%	51%	46%	31%	41%
	Honokaa-Kealakehe-Kohala-Konaweana	Honokaa	30%	33%	34%	37%	27%	24%	28%	31%
		Kealakehe	43%	46%	37%	20%	24%	34%	22%	34%
		Kohala	26%	24%	44%	26%	14%	42%	15%	26%
		Konawaena	44%	47%	43%	27%	34%	34%	21%	35%
	Kau-Keaau-Pahoa	Kau	11%	28%	10%	21%	9%	12%	4%	14%
		Keaau	47%	39%	36%	16%	19%	25%	25%	29%
		Pahoa	31%	29%	29%	39%	37%	26%	29%	31%
Maui	Baldwin-Kekaulike-Maui	Baldwin	37%	46%	42%	31%	40%	37%	33%	38%
		Kekaulike	51%	52%	43%	14%	22%	45%	16%	36%
		Maui	54%	54%	50%	26%	32%	34%	32%	42%
	Hana-Lahainaluna-Lanai-Molokai	Hana	48%	36%	29%	29%	40%	28%	14%	33%
		Lahainaluna	46%	38%	38%	28%	22%	22%	21%	31%
		Lanai	42%	26%	25%	27%	na	14%	45%	27%
		Molokai	43%	33%	35%	53%	29%	42%	23%	36%
Kauai	Kapaa-Kauai-Waimea	Kapaa	41%	35%	40%	34%	30%	33%	15%	33%
		Kauai	53%	49%	54%	36%	46%	38%	14%	42%
		Waimea	54%	44%	41%	38%	13%	12%	23%	35%
Special	Hawaii School for Deaf & Blind	Kalani	na	na	na	na	na	na	na	5%
Charter Schools			44%	44%	35%	31%	35%	32%	23%	36%

Note: Achievement rates are based on all students who were administered either the Smarter Balanced Math Assessment or the HSA-Alt.

na = Data not reported to maintain student confidentiality (see FERPA).

Source: Hawaii State Department of Education: Office of Strategy, Innovation and Performance: Data Governance and Analysis Branch.

Table 24. Percent Meets and Exceeds Proficiency on the Hawaii Statewide Assessment Program Science Assessments by Grade and Complex for SY 2014-15

District	Complex Area	Complex	4	8	HS*	All Tested Grades
ALL SCHOOLS			54%	37%	31%	42%
Department Schools			54%	37%	31%	42%
Honolulu	Farrington-Kaiser-Kalani	Farrington	45%	29%	17%	32%
		Kaiser	80%	65%	53%	66%
		Kalani	83%	47%	29%	54%
	Kaimuki-McKinley-Roosevelt	Kaimuki	54%	34%	8%	39%
		McKinley	43%	13%	26%	33%
		Roosevelt	80%	45%	37%	54%
Central	Aiea-Moanalua-Radford	Aiea	47%	50%	22%	43%
		Moanalua	61%	40%	46%	48%
		Radford	60%	54%	32%	52%
	Leilehua-Mililani-Waialua	Leilehua	58%	47%	30%	48%
		Mililani	78%	40%	53%	58%
		Waialua	74%	51%	24%	47%
Leeward	Campbell-Kapolei	Campbell	49%	36%	46%	44%
		Kapolei	44%	30%	26%	33%
	Nanakuli-Waianae	Nanakuli	27%	7%	6%	14%
		Waianae	35%	12%	20%	23%
	Pearl City-Waipahu	Pearl City	74%	43%	33%	52%
		Waipahu	36%	43%	27%	35%
Windward	Castle-Kahuku	Castle	61%	37%	29%	45%
		Kahuku	53%	27%	25%	37%
	Kailua-Kalaheo	Kailua	69%	36%	32%	50%
		Kalaheo	73%	56%	58%	62%
Hawaii	Hilo-Laupahoehoe-Waiakea	Hilo	52%	38%	23%	39%
		Waiakea	55%	41%	34%	43%
	Honokaa-Kealakehe-Kohala-Konaweana	Honokaa	36%	30%	26%	31%
		Kealakehe	53%	23%	32%	39%
		Kohala	39%	34%	56%	39%
		Konawaena	49%	25%	23%	31%
	Kau-Keaau-Pahoa	Kau	37%	11%	10%	20%
		Keaau	47%	21%	13%	27%
		Pahoa	45%	29%	13%	35%
Maui	Baldwin-Kekaulike-Maui	Baldwin	52%	40%	26%	39%
		Kekaulike	56%	45%	36%	47%
		Maui	58%	40%	22%	43%
	Hana-Lahainaluna-Lanai-Molokai	Hana	45%	24%	5%	27%
		Lahainaluna	46%	25%	25%	32%
		Lanai	29%	na	na	30%
		Molokai	41%	27%	16%	27%
Kauai	Kapaa-Kauai-Waimea	Kapaa	39%	26%	36%	34%
		Kauai	43%	28%	23%	32%
		Waimea	44%	25%	21%	32%
Special	Hawaii School for Deaf & Blind	Kalani	na	na	na	na
Charter Schools			45%	34%	28%	37%

Note: Achievement rates are based on all students tested.

*HS (High School) Science proficiency is measured by the Biology I End of Course exam and the HSA-Alt

na = Data not reported to maintain student confidentiality (see FERPA).

Source: Hawaii State Department of Education: Office of Strategy, Innovation and Performance: Data Governance and Analysis Branch.

Appendices

Appendix A. Glossary

This glossary explains the educational and fiscal terms and measures contained in the Superintendent's Annual Report. An "na" indicates data are "not appropriate" or "not reportable." A "--" indicates data are missing or unavailable. Due to rounding of percentages, there may be slight differences among published reports (for example, 9.6% may be reported as 10% for the same measure in different reports).

Administrators, School: This is a Full-Time Equivalent (FTE) count of all principals and vice-principals.

Administrators, State and Complex Area: This is an FTE count of the positions responsible for the administrative support of programs, curriculum, and state or federal legal requirements at the complex area and state levels. Examples of FTE positions include complex areas superintendents, evaluation specialists, facilities planners, personnel specialists, test development specialists, budget specialists, information (data) specialists, state and district curriculum/educational specialists, and safety/security program specialists.

Appropriated Funds: Funds determined by the state legislature and enacted by the governor to provide basic support for the Hawaii State Department of Education to operate a statewide school district.

Attendance Rate: The percentage of the official student enrollment attending school every day during the school year. For example, 95% means that on any given day during the given school year, an average of 95% of the students are present in school.

Average Years Teaching Experience: This is a simple average of the number of years of approved teaching experience within the Hawaii Department of Education.

Charter Schools: Charter schools are public schools operated and managed by independent governing boards. They operate under a performance contract with the State Public Charter School Commission, the statewide charter school authorizer. The Commission approves quality applications for new charter schools, monitors the performance and legal compliance of existing charter schools, and is responsible to the Board of Education.

Classroom Teachers, FTE or Headcount: An FTE Classroom Teacher count is a position count of all teachers who are directly teaching students. Unlike FTE, "Headcount" is a simple count of the number of teachers who are directly teaching students. Thus, 1.5 FTE teachers may have a headcount of two (one 1.0 FTE and one 0.5 FTE) or three (three teachers in 0.5 FTE positions).

Complex: This smaller division within a Complex Area consisting of a high school and the middle/intermediate and elementary schools within its attendance boundary.

Complex Areas: These are administrative units made up of two or more complexes.

Demographics, State: Figures reported by the U.S. Census Bureau for years other than decennial 10-year censuses are estimates and are updated periodically. Such estimates in this report are from the American Community Survey. For an explanation of terms, definitions, and criteria used for classification, please visit the U.S. government website for the census: www.census.gov.

Dropout Rate: This four-year dropout rate is the percentage of high school students who have not returned to school and have either officially exited as "drop-outs", have school enrollment statuses that are undetermined, or have not graduated within four years.

Economically Disadvantaged: These are students whose families meet the income qualifications for the federal free/reduced-cost lunch program. This is an indicator of school-community poverty.

English Language Learners (ELL): Students certified as receiving English-as-a-second-language services.

Enrollment Count, Official: The official enrollment count of each school is reported to the state upon the yearly opening of school. A school's enrollment may fluctuate over the course of the school year; thus, an enrollment count taken mid-year may be different from its official enrollment count.

Federal Funds: Funds provided by the federal government for use by the state public school system through grants from various federal agencies, such as the U.S. Department of Education, U.S. Department of Defense, and U.S. Department of Agriculture.

Five or More Years at Same School: Percent of teachers who have taught at one school for five or more years. It is an indicator of school staffing stability. Schools with higher levels of stability are considered most successful in implementing and sustaining school improvement efforts.

Fully Licensed: Teachers who meet the requirements (e.g., earned at least a bachelor's degree and completed an approved teacher training program) to be fully licensed by the Hawaii State Teachers Standards Board.

Full-Time Equivalent (FTE): These are position counts and are the sum of full- and part-time positions. Note that partial counts are possible. For example, one full-time (1.0 FTE) and one half-time (0.5 FTE) would count as 1.5 FTEs.

General Funds: The primary source of funding for the state public school system provided by the state through taxpayer revenues.

Graduation, Graduation Rate, Graduate On Time, Four-Year Graduation: Count or percentage of all high school students, including public charter school students, who had completed high school within four years of their 9th-grade entry date. Special Education students receiving certificates of completion and students taking more than four years to complete high school are not included. For more information on the new Adjusted Cohort Graduation Rate methodology, visit the U.S. DOE website:

<http://www2.ed.gov/policy/elsec/guid/hsgrguidance.pdf>

National Assessment of Educational Progress (NAEP): These are norm-referenced tests in reading, mathematics, and science developed and administered by the U.S. Department of Education to sampled groups of students in grade 4 and 8 in all states. The data from the NAEP include state results for demographic groups of students, but not for Complex Areas, schools, or individual students. The metrics that NAEP uses include average scale scores and the percentages of students achieving NAEP Advanced, NAEP Proficient, NAEP Basic, and NAEP Below Basic. Advanced and Proficient denote mastery of challenging subject matter, including success on some items that are above the grade level of the students being tested. NAEP defines Basic as denoting partial mastery of prerequisite knowledge and skills that are fundamental for proficient work at each grade assessed. Below Basic means performance below the grade level being tested. These achievement levels overlap with, but are not identical to, the proficiency levels of the Hawaii state assessments.

Not Suspended, Students: The number of students who are not suspended by the school and an indicator of appropriate student behavior at school.

Others: Percentage of high school completers who received a special education certificate of completion in lieu of a diploma and students who are still attending school and did not graduate in the four-year time frame. These students are not included in the “Dropout” count or in the “Graduation On-time” count.

Perceptions of Safety and Well-Being, Student and Teacher: Positive responses (“Completely Agree”, “Strongly Agree” and “Agree”) to a set of items on the Hawaii State Department of Education’s annual School Quality Survey (SQS) regarding school safety and well-being. The percentage of responses that are positive is reported.

Per-Pupil Expenditure: The numbers reported by the National Center of Education Statistics (NCES) may be used for state-to-state comparisons. Numbers are based on membership and can be expected to be smaller than per pupil expenditures based on average daily attendance. Current expenditure for public elementary and secondary education in a state is divided by the student membership. Current expenditures are funds spent for the operation of local public schools and local education agencies, including such operating expenses as salaries for school personnel, student transportation, school books and materials, and energy costs, but excluding capital outlay and interest on school debt.

Private Schools: Privately-operated schools not under the direction of the Hawaii State Department of Education.

Retention Rates for Elementary: Percentage of students, excluding kindergartners, who are not promoted to the next grade level. A low retention rate is desired.

Retention Rates for Middle & Intermediate: Percentage of 8th grade students who are not promoted to 9th grade the following year. A low retention rate is desired.

Schools, Total: The total number is the sum of all public schools. All regular public schools, public charter schools, and special schools are in this count. The Community Schools for Adults are not included.

Section 504: Regulation requiring schools to provide a “free appropriate public education” (FAPE) to each qualified student with a disability who is in the school district’s jurisdiction regardless of the nature or severity of that disability.

Special Education (SPED): This count and percentage contain all special education students listed on the official enrollment report as receiving special education services.

Special Funds: Funds generated through revenue sources other than state taxpayer revenues, such as cafeteria collections from students; adult education tuition/fees; summer school tuition; driver education fees; facility rental fees; and lost textbook penalty fees.

Special Needs, Multiple: Students identified and/or qualified as special needs under more than one of the following categories: economically disadvantaged as determined by receiving free/reduced-cost lunch, Section 504 classification, and certified as receiving special education or English Language Learner services.

Standards-Based Assessment: These tests of the Hawaii Statewide Assessment Program (HSAP) measure student achievement in English Language Arts, Mathematics, and Science based on Hawaii Department of Education content standards. The percentages shown are assessment results. “*Percent Meeting Standard*” is derived from test results that meet or exceed the achievement standard (i.e., achievement cut-score).

State and Local Expenditures Supporting Public Education, Percent: This percentage is published in the annual U.S. Department of Education National Center of Education Statistics (NCES) *Digest of Educational Statistics* publication. The percentage is calculated by dividing the states' "Total, all general expenditures per capita" by the states' "Elementary and secondary education expenditures per capita." The "Total, all general expenditures per capita" includes state and local government expenditures for education services, social services, and income maintenance, transportation, public safety, environment and housing, governmental administration, interest on general debt, and other general expenditures, including intergovernmental expenditure to the federal government, as reported by the state's NCES Common Core of Data Financial Survey.

Support Staff, Other: This is an FTE count that encompasses a wide range of positions that support schools. This category may include, but is not limited to, school assessment liaisons, athletic directors, registrars, state and district resource teachers, school psychologists, custodians, cafeteria workers, school secretaries, school security guards, educational assistants, occupational therapists, mental health assistants, behavioral specialists, and student service coordinators. Note that the assignment of positions to categories is based on U.S. Department of Education National Center for Education Statistics Common Core of Data Non-Fiscal Survey requirements.

Trust Funds: Funds segregated for specific purposes, such as foundation grants and athletic gate receipts.

Wellness: Student wellness is affected by nutrition education, the food served in schools, and the amount of physical activity students engage in. The Department of Education also recognizes that when students' wellness needs are met, they attain higher achievement levels.

Appendix B. References and Resources

Educational and Accountability Reports

Accountability Data Center

This is a web portal for educational accountability information. It complements the many federally- and state-required accountability reports at the school, complex, Complex Area, and state levels that are available as static documents on the Hawaii State Department of Education's ARCH (Accountability Resource Center-Hawaii) website.

<http://arch.k12.hi.us>

Enrollment

These reports have student enrollment figures by districts, state and grade-level groups.

<http://www.hawaiipublicschools.org/VisionForSuccess/SchoolDataAndReports/SchoolReports/Pages/home.aspx>

National Assessment of Educational Progress (NAEP)

The NAEP website has three sets of information of special interest to educators and the general public. A visitor to the website can access them by viewing the key words along the top margin. SAMPLE QUESTIONS provides the visitor with all of the released items since "state NAEP" began in 1990. ANALYZE DATA provides a tool by which an educator or a researcher can retrieve NAEP results by subjects, grades, and demographics. STATE PROFILES provides general results for all states. Anyone seeking help with accessing and using these data tools is welcome to contact NAEP state coordinator Robert Hillier at robert_hillier@hawaiidoe.org or (808) 733-4100. The NAEP website contains a large amount of additional information and links to other assessment-related web sites.

<http://nces.ed.gov/nationsreportcard/naepdata/>

School Quality Survey (SQS)

The survey gathers school staff, student and parent perceptions that are useful for school improvement and planning efforts. The SQS also provides information about parent involvement and parent and student satisfaction with their schools.

<http://arch.k12.hi.us>

School Status and Improvement Report (SSIR)

Each SSIR has a description of the school and its setting, a summary of progress in implementing Hawaii Department of Education standards, and information on school resources and educational outcomes.

<http://arch.k12.hi.us>

Strive HI

The current school accountability and improvement system is designed to meet the needs of Hawaii's students, educators, and schools. It aligns and connects our key state education policies and initiatives to position students and educators for success.

<http://www.hawaiipublicschools.org/VisionForSuccess/AdvancingEducation/StriveHIPerformanceSystem/Pages/home.aspx>

<http://arch.k12.hi.us>

Trend Report: Educational & Fiscal Accountability

This annual report contains three years of trend data on schools, school complexes, and the Hawaii State Department of Education at selected benchmark grade levels with performance indicators in areas relating to student achievement, safety and well-being, and civic responsibility. These reports are designed to present trend data information to the public in a concise format for each complex and school as well as for the state.

<http://arch.k12.hi.us>

Financial Reports

Allocations by School Program

These annual reports contain dollar amounts allocated by Allocation Number, Program, or Organization.

<http://www.hawaiipublicschools.org/ConnectWithUs/Organization/Budget/Pages/home.aspx>

Annual Financial Reports

This Annual Financial Report is prepared each year to inform interested persons of the total cost of public education in the State of Hawaii. The reports provide both Operating and Capital Improvement Project fund information that is useful in presenting our educational system's financing, expenditures and per pupil information.

<http://www.hawaiipublicschools.org/VisionForSuccess/SchoolDataAndReports/StateReports/Pages/home.aspx>

Audit

The annual report on the financial audit of the Hawaii State Department of Education forms an opinion on the fairness of the presentation of its financial statements to comply with requirements for state and local governments that receive federal financial assistance.

<http://www.hawaiipublicschools.org/VisionForSuccess/SchoolDataAndReports/StateReports/Pages/home.aspx>

Budget

These reports have fiscal information on budget restrictions, operating budget allocations (initial and supplemental), emergency appropriations, and biennium budgets.

<http://www.hawaiipublicschools.org/ConnectWithUs/Organization/Budget/Pages/home.aspx>

Special Education Reports

Annual Performance Report & State Performance Plan

These documents are the state's plans and reports in accordance with the Individuals with Disabilities Education Improvement Act of 2004. Included are evaluations of the state's efforts and plans for improving implementation.

<http://www.hawaiipublicschools.org/VisionForSuccess/SchoolDataAndReports/StateReports/Pages/Special-Education-Performance-Report.aspx>

Due Process Hearings Findings

The findings of due process hearings are provided for public information.

<http://www.hawaiipublicschools.org/VisionForSuccess/SchoolDataAndReports/StateReports/Pages/Special-Education-Performance-Report.aspx>

Other Resources

Center on the Family

This resource provides access to research reports, informational articles, videos, brochures, and other materials designed to support and strengthen families in Hawaii. The Center on the Family at the University of Hawaii-Manoa also issues an annual report on a core set of indicators reflecting overall well-being of Hawaii families.

<http://uhfamily.hawaii.edu>

Hawaii P-3

An initiative by Hawaii P-20 to increase children's social-emotional and cognitive development toward the end goal of reading at grade level by third grade.

<http://p3hawaii.org/>

Hawaii P-20 Partnerships for Education

A statewide partnership led by the Good Beginnings Alliance, the Hawaii State Department of Education, and the University of Hawaii System to strengthen early childhood through post-secondary education so that all students achieve career and college success. Annual College and Career Readiness reports are available on its website.

<http://www.p20hawaii.org/>

State Public Charter School Commission

The State Public Charter School Commission (SPCSC or Commission) is the statewide charter school authorizer whose mission is to authorize high-quality public charter schools throughout Hawaii. The Commission approves quality applications for new charter schools and monitors the performance and legal compliance of existing charter schools. Charter schools are public schools operated and managed by independent governing boards that are responsible for the schools' financial, organizational, and academic viability. Although they are funded on a "per-pupil" basis separately from Department of Education-operated schools, charter schools are open-enrollment public schools that serve all students and do not charge tuition. Annual reports are available on its website.

<http://www.chartercommission.hawaii.gov>

Appendix C. Data Tables

Data tables are available online at:

http://arch.k12.hi.us/state/superintendent_report/annual_report.html

1. Enrollment in Hawaii Public and Private Schools
2. Enrollment by Complex Area
3. Enrollment of Students with Special Needs
4. Special Needs Affecting Public School Students in Hawaii
5. Average Daily Attendance Rates by School Type
6. Four-year Graduation and Dropout Rates
7. Ethnicity of Students and Teachers
8. Hawaii Statewide Assessment Program Results
9. Chapter 19 Suspensions Categorized by Type of Incident
10. Administrative Staff as a Proportion of Total Staff: Hawaii and Comparison States
11. Expenditures per Pupil: Hawaii and Comparison States
12. Hawaii and States with Similar Financial Resources
13. Percent of State and Local Expenditures Supporting Public Education (K-12): Hawaii and Comparison States
14. Percent of State and Local Expenditures Supporting Public Education (K-12) and Per Pupil Expenditures: All States

