



2020 Summer Learning

Hawai'i State Department of Education

Dr. Christina M. Kishimoto
Superintendent

Weekly Report
June 15-19, 2020

Submitted to the Hawaii State Board of Education on June 26, 2020





HIDOE Phases of Design and Delivery

Continuity of Learning through COVID-19

Phase 1

Continuity of School
Year 2019-20 & Initiating
Department Support
Services

Phase 2

**Summer Learning &
Transition Planning**

Phase 3

Planning for Reopening:
School Year 2020-21

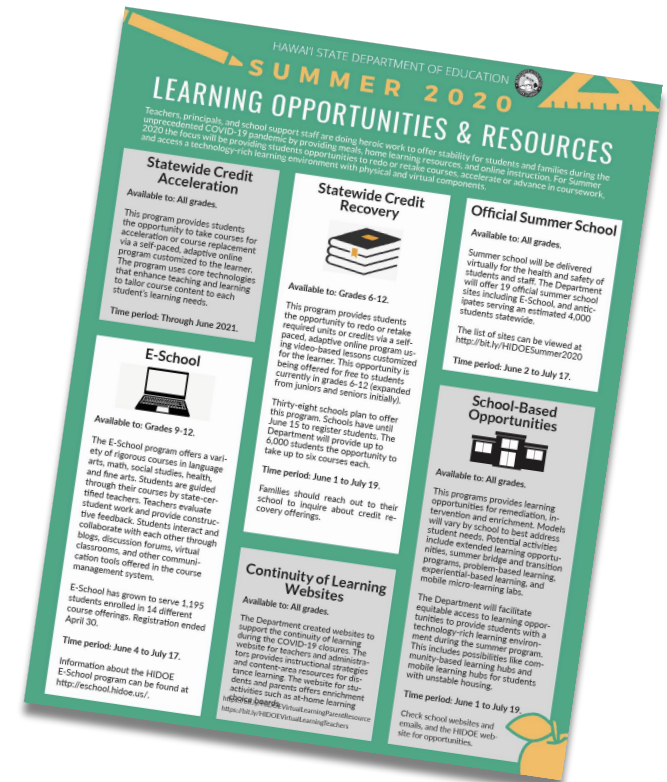
We designed an expanded summer learning approach that focuses on addressing student learning needs as well as service, design and innovation. Due to the extensive closure of school buildings, which totaled 46 days for SY 19-20, the Department is maximizing summer learning opportunities in order to re-engage students and ensure they are ready to transition. Between June 1-July 17, schools will continue to implement programming to support the unique needs of their students.



HIDOE Phase 2

Summer Learning & Transition Planning

- Provides special education and related services to students through Extended School Year (ESY) programs.
- Expands online distance learning instructional delivery for safety and alternative scheduling for summer school.
- Offers statewide credit recovery opportunities targeting students who did not meet proficiency, at no cost to students grades 6-12 (expanded from juniors and seniors initially).
- Launch school-based summer learning opportunities, including extended learning, kinder boosts, targeted enrichment, mobile learning hubs, outreach and community-based learning hubs.





Report for June 15-19

*Summer Learning 2020
Overview*



Photo credits: Hauula Elementary



What's included this week. . .

Report Reflects Data Collected from Active Statewide
Summer Learning Opportunities Offered During
the Week of June 15-19, 2020

Total Summer
Learning
Opportunity
Programs: 8

As of
6/19/2020

Official Summer Schools

15

Credit Recovery Schools

10

E-School Official Summer School

1

School-Based Opportunities

142

State Level Programs

2

ALPSS

8

ESY Schools

117

Total Summer Learning Opportunities Offered

295



Report for June 15-19, 2020 | *Data Collection Process and Overview*



Reporting

For the week of June 15-19, there was a significant increase in the schools that reported data. This is an Increase of +51 summer learning opportunities offered compared to the prior week.



Student Participants

This week we serviced 15,262 students, which is an increase of approximately +3,860. This increase is the result of schools achieving peak execution of operational summer learning opportunities.



Unique Data Sets

The data sets contained in this report cannot be compared from week to week. These data sets highlight varying groups of students, types of courses and programs that reflect the uniqueness of the schools and its students.



Overview of 2020 Summer Programs

17+1

Official Summer School Sites

Offered at 17 schools where instruction will be delivered virtually.

E-School is an official summer school online education option offered to students in grades 9-12.

- 17 Official Summer School
- E-School - also considered an official summer school

219

School-Based Opportunities

Will vary both in design and delivery depending on the school and the program.

Examples include:

- Learning Hubs
- Transitions
- Mobile Hubs

193

Extended School Year (ESY)

Available at 193 schools for eligible students with disabilities

- Determined by students' Individualized Educational Program (IEP)

To see which schools are offering these programs, please visit the **Summer 2020 Learning Opportunities Dashboard** at <https://tabsoft.co/3f3aCsP>.



Summer Programs

- *Official Summer School*
- *E-School*
- *Credit Recovery*

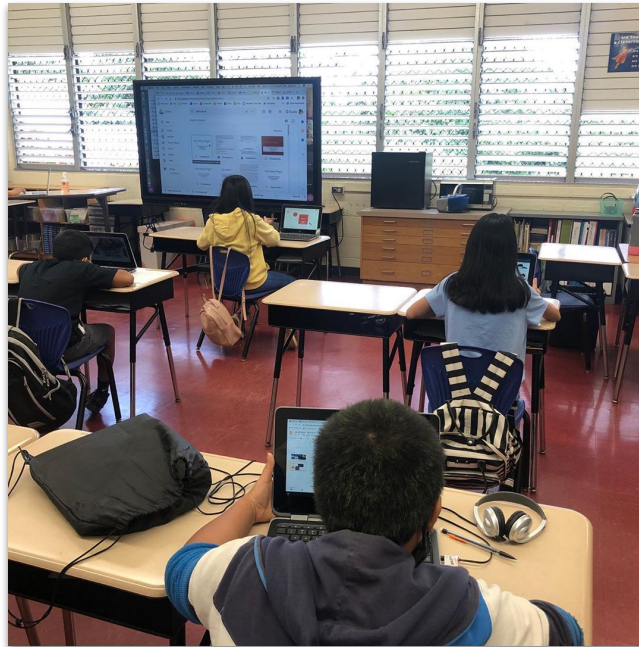


Photo credit: Wahiawa Elementary



Photo credit: Ilima Intermediate



Report for June 15-19, 2020 | *Official Summer School*

List of Summer School Sites

KAUAI

Kapa'a High

OAHU

Aina Haina Elementary	Leilehua High
Campbell High	Mililani High
Highlands Inter	Moanalua High
Kaimuki High	Moanalua Middle
Kalani High	Pauoa Elementary
Kawananakoa Middle	Pearl City High
Kula Kaiapuni O Anuenue	Radford High

MAUI

Baldwin High

HAWAII

Waiakea High



Report for June 15-19, 2020 | *Official Summer School*

STATEWIDE	Official Summer School*	
For the week ending: 06/19/2020		
Disproportionately Impacted Students	Students	Attendance
Junior/Senior	65	99.3%
Transition	38	100.0%
Failing grade (F's or DP/WB)	296	95.0%
9th Gr. Off-track	6	96.0%
504/Behavior Concerns	3	0.0%
EL: ELP 1 & 2	2	0.0%
Students who fall in multiple categories	117	96.9%
Not Disproportionately Impacted	2,938	94.4%
TOTAL	3,465	94.6%

*Week #3 Official Summer School totals include data from 15 schools.

17+1
schools
offering official
summer school

STATEWIDE	Official Summer School	
For the week ending : 06/19/2020		
By Student Demographics	Students*	Attendance
SPED	189	91.6%
English Learners	93	95.0%
Homeless	21	76.0%
504	155	94.9%
Migrant	0	0%
None of the Above	3,025	82.0%

*Students may be in one or more demographic categories

E-School is an official summer school online education option offered to students in grades 9-12.



Report for June 15-19, 2020 | *Official Summer School*

STATEWIDE	Official Summer School											
For the week ending : 06/19/2020												
Disproportionately Impacted Students	English Language Arts		Mathematics		Social Studies		Science		Other		TOTAL	
	Students	Attendance	Students	Attendance	Students	Attendance	Students	Attendance	Students	Attendance	Students	Attendance
Junior/Senior	3	90.0%	13	98.3%	32	100.0%	5	100.0%	12	100.0%	65	99.3%
Transition	*	*	*	*	*	*	*	*	38	100.0%	38	100.0%
Failing grade (F's or DP/WB)	100	96.1%	58	95.6%	76	98.2%	23	91.9%	39	84.9%	296	95.0%
9th Gr. Off-track	3	100.0%	1	80.0%	*	*	2	100.0%	*	*	6	96.0%
504/Behavior Concerns	*	*	*	*	*	*	*	*	3	0.0%	3	0.0%
EL: ELP 1 & 2	*	*	*	*	*	*	1	0.0%	1	0.0%	2	0.0%
Students who fall in multiple categories	43	95.8%	22	98.0%	17	90.5%	2	80.0%	33	100.0%	117	96.9%
Not Disproportionately Impacted	198	98.3%	419	97.1%	517	86.9%	58	95.8%	1746	92.0%	2938	94.4%
TOTAL	347	97.4%	513	97.0%	642	98.9%	91	95.3%	1872	92.1%	3465	94.6%

*No data available/reported this week



Report for June 15-19, 2020 | *E-School Summer School*

**690 students
enrolled by
subgroups and
courses**

STATEWIDE	E-School Summer School					
For the week ending: 06/19/2020	Course Enrollment					
By Student Demographics**	English Language Arts	Mathematics	Social Studies	Science	Other	Total Courses Enrolled
SPED	1	*	12	*	3	16
English Learners	2	5	5	*	2	14
Homeless	*	1	2	*	*	3
504	4	2	11	*	10	27
Migrant	1	--	6	--	--	7
None of the Above	70	124	567	--	195	956

* No data available/reported this week

**Students may be in one or more demographic category and be enrolled in more than one course.



Report for June 15-19, 2020 | Credit Recovery (as of June 19)

STATEWIDE	Credit Recovery*	
For the week ending: 06/19/2020		
Disproportionately Impacted Students	Students	Attendance
Junior/Senior	83	100%
Transition	27	100%
Failing grade (F's or DP/WB)	471	70%
Chronic Absentee	*	*
9th Gr. Off-track	*	*
Students who fall in multiple categories	30	50%
Not Disproportionately Impacted	60	98%
TOTAL	671	76%

*based on schools that identify the Disproportionately Impacted Students

10
schools

671
active
participation

13
content
courses

STATEWIDE	Credit Recovery	
For the week ending: 06/19/2020		
Student Demographics**	Students	Attendance
SPED	74	74%
English Learners	73	68%
Homeless	27	63%
504	28	89%
Migrant	5	20%
None of the Above	479	44%

**Students may be in one or more demographic category



School Based Opportunities

- *Disproportionately Impacted*
- *Demographic Subgroups*
- *Program Method*

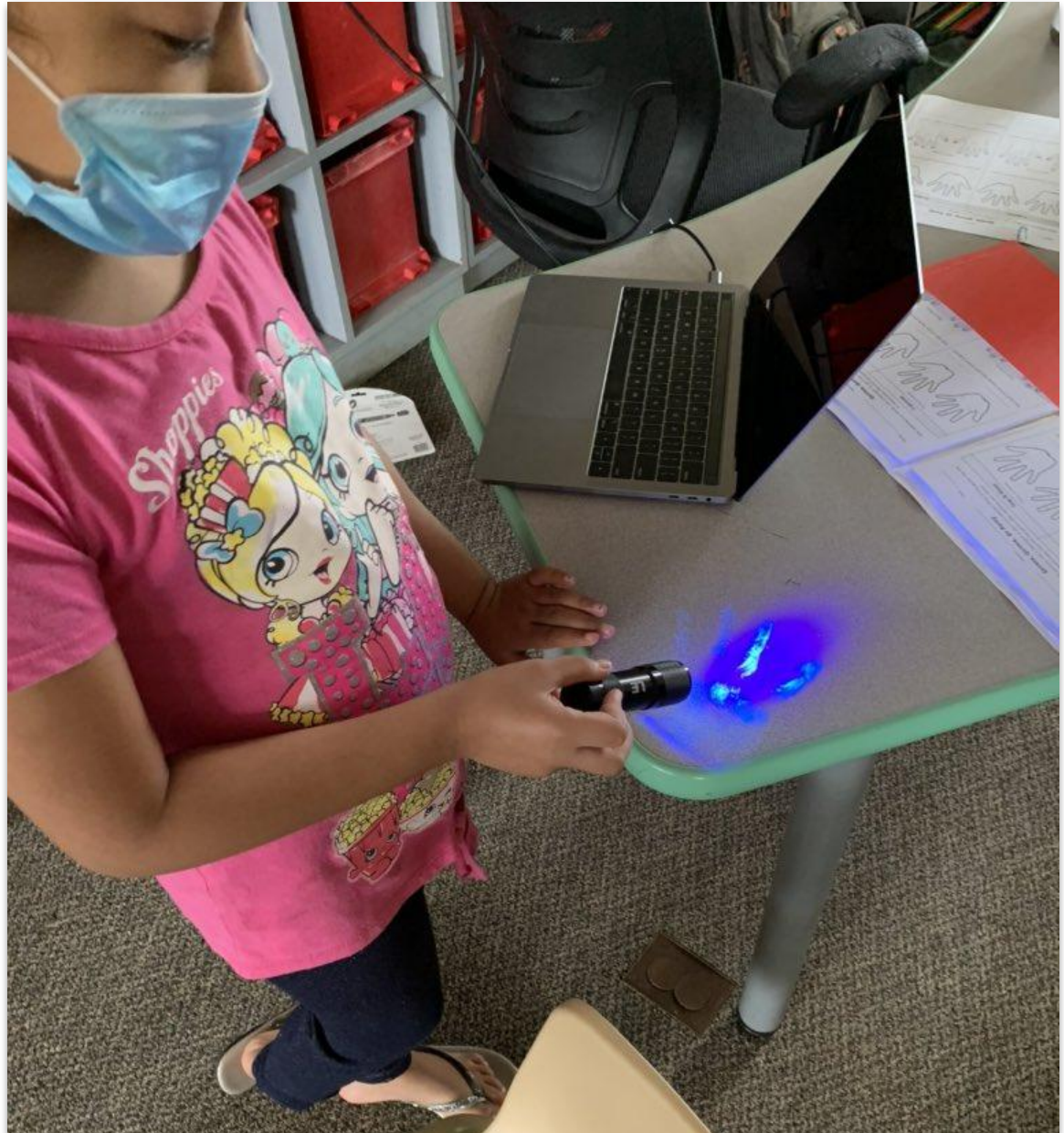


Photo credit: Kahuku Elementary



Report for June 15-19, 2020 | *School-Based Opportunities*

School-Based Opportunities vary both in design and delivery depending on the school and the needs of its students. During this week, 67.6% (+1.6% from week #2) of students were enrolled and were served through a school learning hub and 32.4% were served in a non-core, transition or mobile hub program.

142
schools

9,704
students
enrolled

80.7%
disproportionately impacted
students served



Photo credit: Kanoelani Elementary



Report for June 15-19, 2020 | *Disproportionately Impacted Students*

STATEWIDE	School-Based Opportunities									
For the week ending : 06/19/2020	Bridge/Transition		Non-Core		Remediation		Other		TOTAL	
Disproportionately Impacted Students	Students	Attendance	Students	Attendance	Students	Attendance	Students	Attendance	Students	Attendance
Junior/Senior	0	*	0	*	15	66.2%	61	43.3%	76	47.8%
Transition	727	80.0%	196	86.7%	14	90.9%	46	88.2%	983	81.9%
Failing grade (F's or DP/WB)	238	90.1%	381	81.9%	2772	73.1%	153	64.0%	3544	74.8%
Chronic Absentee	1	0.0%	5	76.9%	21	65.0%	2	50.0%	29	64.8%
9th Gr. Off-track	0	*	0	*	5	88.0%	7	47.8%	12	68.8%
Not meeting 3rd Grade Literacy	55	81.1%	9	67.6%	9	88.9%	3	71.4%	76	80.3%
504/Behavior Concerns	9	71.4%	26	79.5%	18	95.4%	1	80.0%	54	84.1%
EL: ELP 1 & 2	102	80.7%	146	53.5%	302	70.0%	36	77.6%	586	68.7%
Students who fall in multiple categories	497	86.2%	401	62.1%	1184	78.7%	395	70.5%	2477	76.6%
Not Disproportionately Impacted	74	90.4%	1041	88.3%	287	85.8%	465	83.6%	1867	86.8%
TOTAL	1703	83.8%	2205	80.2%	4627	75.3%	1169	74.5%	9704	77.8%

*No data available/reported this week



Report for June 15-19, 2020 | *Demographic Subgroups*

STATEWIDE	School-Based Opportunities									
For the week ending : 06/19/2020	Bridge/Transition		Non-Core		Remediation		Other		TOTAL	
By Student Demographics	Students	Attendance	Students	Attendance	Students	Attendance	Students	Attendance	Students	Attendance
SPED	271	84.4%	301	67.2%	823	76.2%	120	74.4%	1515	75.9%
English Learners	244	85.7%	345	71.1%	981	77.1%	254	75.0%	1824	76.9%
Homeless	34	75.3%	21	59.4%	112	60.6%	19	82.8%	186	65.7%
504	61	82.3%	70	86.8%	177	74.4%	42	52.3%	350	75.5%
Migrant	16	100.0%	27	58.1%	26	85.4%	20	26.5%	89	65.2%
None of the Above	1126	83.1%	1370	81.9%	2684	75.1%	761	76.2%	5941	78.4%

About 18.4% of the total number of students enrolled for week 3 are English Learners and 15.3% are SPED. Attendance measures shown is the average number of days students attended for the week.

Due to staggered start dates, information represented in the table is for schools with start dates of June 8, 2020. This data should not be compared with week 1 or week 2.



Report for June 15-19, 2020 | *Program Method*

STATEWIDE	School-Based Opportunities									
	Bridge/Transition		Non-Core		Remediation		Other		TOTAL	
For the week ending : 06/19/2020	Students	Attendance	Students	Attendance	Students	Attendance	Students	Attendance	Students	Attendance
By Program Method	Students	Attendance	Students	Attendance	Students	Attendance	Students	Attendance	Students	Attendance
Online	996	79.2%	1254	79.2%	950	74.1%	598	73.2%	3798	77.0%
Face to Face	535	91.9%	500	85.4%	2224	86.1%	182	95.4%	3441	87.4%
Blended Learning	172	85.1%	434	77.6%	1448	59.0%	362	66.1%	2416	65.1%
Packet	0	*	1	0.0%	0	*	0	*	1	0.0%
Other	0	*	16	45.0%	5	94.1%	27	75.2%	48	73.4%
TOTAL	1703	83.8%	2205	80.2%	4627	75.3%	1169	74.5%	9704	77.8%

*No data available/reported this week

Program Methods:

Online = Online instruction

Face to Face = In-person instruction

Blended = Combination of online and in-person instruction

Packet = Paper instruction

Other = Other instruction such as PBS

*Due to staggered start dates, information represented in the table is for schools with start dates of June 8, 2020.
This data should not be compared with week 1 or week 2.*



State-Level Programs

- *Extended School Year (ESY)*
- *Alternative Learning Program Support & Services (ALPSS)*
- *School Feeding Program*
- *Personal Protective Equipment (PPE)*
- *YES Project*



Photo credit: Lokelani Intermediate



Photo credit: Waianae High



Report for June 15-19, 2020 | *Extended School Year (ESY)*



117

schools

2,236

students
eligible

543

students served

For the week ending: 06/19/2020	ESY	
By Program Method	Students	Attendance
Online	96	88.1%
Face to Face	353	91.5%
Blended Learning	60	89.6%
Packet	11	78.6%
Other	23	100.0%
TOTAL	543	88.2%



Report for June 15-19, 2020 | *Alternative Learning Program Support Services*

		Week 1 (06/01-06/05)	Week 2 (06/08-06/12)	Week 3 (06/15-06/19)
#	Student Participants	142	158	181*
#	Sites	10	10	8**
#	ALPSS Teachers	15	16	16
#	Courses Offered	18	20	24

The increased number of students participating in ALPSS in the Summer from the week of June 8 to the week of June 15 is due to the receipt and confirmation of student commitments. The first official week of the program (June 15), the student numbers reflect the permissions that were submitted over the weekend and on the first day, which enabled more students to participate.

**Count of participants include 75 students in a direct ALPSS program and 106 students in other summer learning opportunity programs that are being tutored by ALPSS teachers.*

***Two ALPSS sites are not represented in this week's detail report.*



Report for June 15-19, 2020 | *Meals*



Statewide Distribution (as of 6/23/2020) <i>*School self-reported counts</i>			
	Week 1 (06/01-06/05)	Week 2 (06/08-06/12)	Week 3 (06/15-06/19)
Breakfast*	12,439	8,965	16,556
Lunch*	30,565	23,943	38,633
Total	43,004	32,908	55,189

This is point in time data as of June 23, 2020, which is updated weekly.



Report for June 15-19, 2020 | *Personal Protective Equipment*

PPE Statewide Distribution (as of 6/19/2020)

	Week 3 (06/15-06/19)
Cloth Masks	24,447
Face Shields for SpEd Teachers/EAs	2,689



Photo Credit: Ilima Intermediate

Data as of June 19, 2020 (updated weekly). PPE inventory distribution is for summer learning/startup reopening for school year 2020-2021.



Report for June 15-19, 2020 | *The YES Project*

WEEK ENDING 6/19	The pilot YES mobile hub project is a collaborative outreach initiative designed to deliver supports to children in unstable housing.	
NUMBER OF STUDENTS REACHED	8	
NUMBER OF SCHOOLS / COMMUNITY SITES VISITED	22 / 4	
SOURCE OF REFERRAL	Liaisons and Principals, Vice-Principals	
WHAT WAS DELIVERED	MV1 forms, Purposity flyers, art supplies, books	
AGENCY CONNECTIONS MADE	Honolulu Community Action Program and Summer Fun	
ONLINE ACCESSIBILITY	Students were connected using home WiFi on devices provided by schools. We are also currently working with neighboring school for additional connection capabilities. The overall need is for widespread WiFi access for students, especially in multi-family households.	





Report for June 15-19, 2020 | *Highlight for the Week*

In the Kau-Keaau-Pahoa Complex Area, the complex area staff and the community partners worked together to provide support for the community-based mobile learning hubs. Through these hubs, the students connected with each other and the significant adults from their schools, all while engaging in learning online.

Ka'u Mobile Learning Hub



Photo credit: Kau Keaau Pahoa Complex Area



Looking Ahead | *Summary*

- We anticipate an increased number of participants reported for summer learning opportunities within the next two weeks.
- Following the next two weeks, there will be a probable decrease in both offerings and participants as schools wind down from summer learning and shift their focus to the opening of school.
- There will be an increase in the number of students making progress in the official summer school program as it enters the halfway point of the summer.