



# 2020 Summer Learning

## Hawai'i State Department of Education

**Dr. Christina M. Kishimoto**  
*Superintendent*

**Weekly Report**  
**June 22-26, 2020**

Submitted to the Hawaii State Board of Education on July 6, 2020





# HIDOE Phases of Design and Delivery

## *Continuity of Learning through COVID-19*

### Phase 1

Continuity of School  
Year 2019-20 & Initiating  
Department Support  
Services

### Phase 2

**Summer Learning &  
Transition Planning**

### Phase 3

Planning for Reopening:  
School Year 2020-21

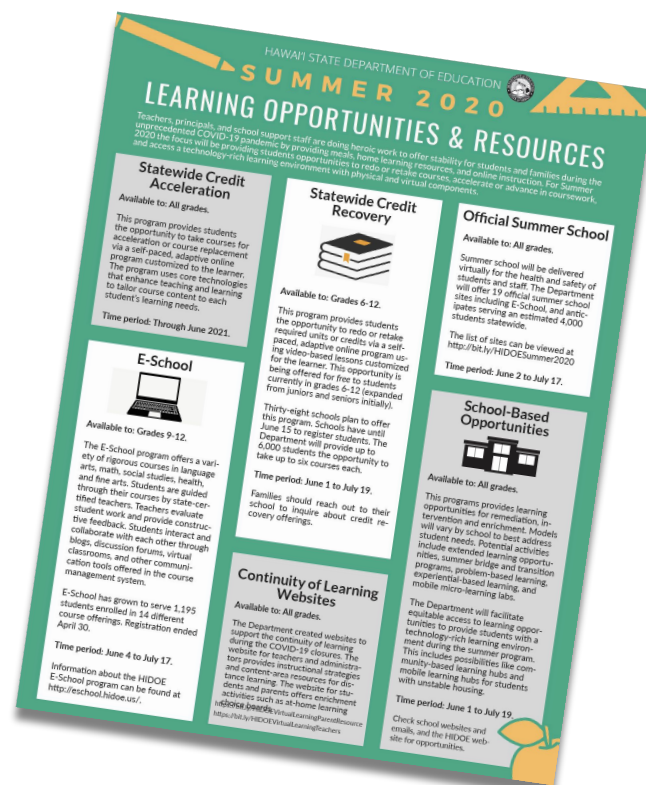
We designed an expanded summer learning approach that focuses on addressing student learning needs as well as service, design and innovation. Due to the extensive closure of school buildings, which totaled 46 days for SY 19-20, the Department is maximizing summer learning opportunities in order to re-engage students and ensure they are ready to transition. Between June 1-July 17, schools will continue to implement programming to support the unique needs of their students.



# HIDOE Phase 2

## Summer Learning & Transition Planning

- Provides special education and related services to students through Extended School Year (ESY) programs.
- Expands online distance learning instructional delivery for safety and alternative scheduling for summer school.
- Offers statewide credit recovery opportunities targeting students who did not meet proficiency, at no cost to students grades 6-12 (expanded from juniors and seniors initially).
- Launch school-based summer learning opportunities, including extended learning, kinder boosts, targeted enrichment, mobile learning hubs, outreach and community-based learning hubs.





# Report for June 22-26

*Summer Learning 2020  
Overview*



Photo credit: Kapolei Middle





# What's included this week. . .

Report Reflects Data Collected from Active Statewide  
Summer Learning Opportunities Offered During  
the Week of June 22-26, 2020

Total Summer  
Learning  
Opportunity  
Programs: 8

As of  
6/26/2020

Official Summer Schools

15

Credit Recovery Schools

43

E-School Official Summer School

1

School-Based Opportunities

147

State Level Programs

2

ALPSS

8

ESY Sites

244

Total Summer Learning Opportunities Offered

---

460

(+55.9% from Wk#3)



# Report for June 22-26, 2020 | *Data Collection Process and Overview*



## Reporting

For the week of June 22-26, 80% of the students who engaged in summer learning opportunities have made progress. As compared to last week, there is a slight increase in the amount of students being serviced through learning hubs.



## Student Participants

This week, we serviced 18,273 students, which is an increase of +3,011. The number of students engaged with online learning is steadily increasing.



## Unique Data Sets

The data sets contained in this report cannot be compared from week to week. These data sets highlight varying groups of students, types of courses and programs that reflect the uniqueness of the schools and its students.



# Overview of 2020 Summer Programs

17+1

## Official Summer School Sites

Offered at 17 schools where instruction will be delivered virtually.

**E-School** is an official summer school online education option offered to students in grades 9-12.

- 17 Official Summer School
- E-School - also considered an official summer school

219

## School-Based Opportunities

Will vary both in design and delivery depending on the school and the program.

- Examples include:
- Learning Hubs
  - Transitions
  - Mobile Hubs

193

## Extended School Year (ESY)

Available at 193 schools for eligible students with disabilities

- Determined by students' Individualized Educational Program (IEP)

To see which schools are offering these programs, please visit the **Summer 2020 Learning Opportunities Dashboard** at <https://tabsoft.co/3f3aCsP>.



# Summer Programs

- *Official Summer School*
- *E-School*
- *Credit Recovery*

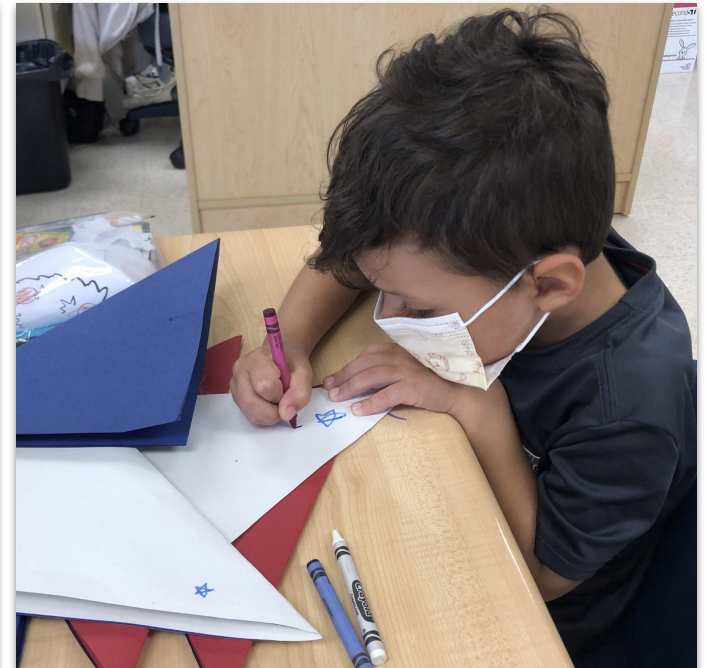
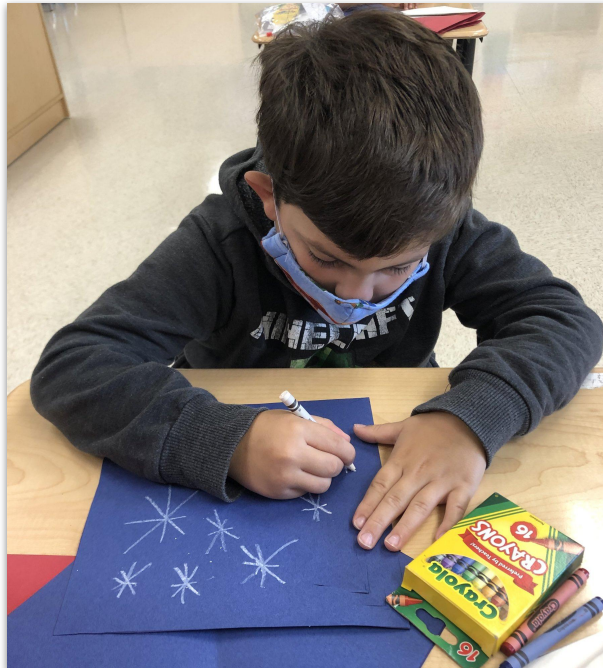
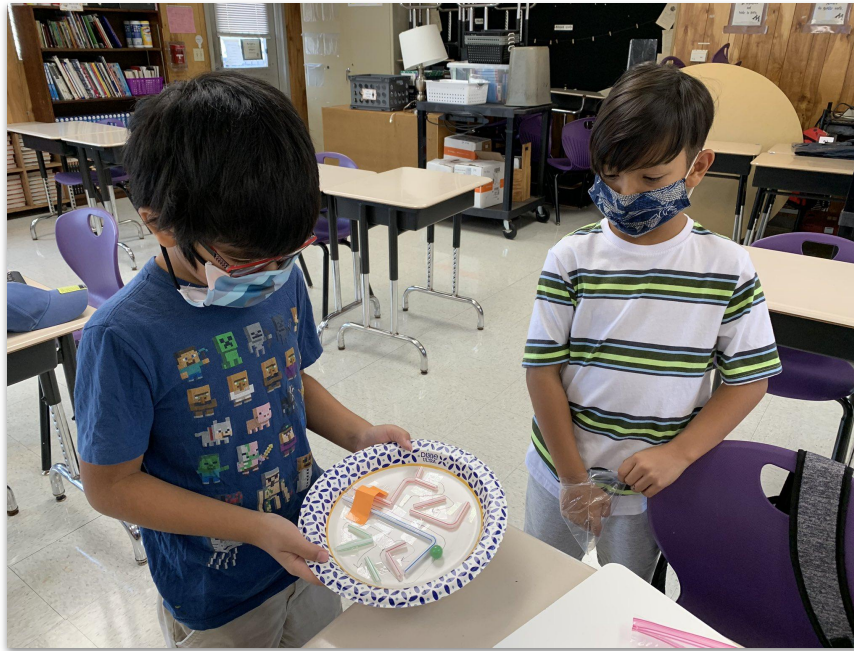


Photo credit: Wheeler Elementary





# Report for June 22-26, 2020 | *Official Summer School*

## List of Summer School Sites



### KAUAI

Kapa'a High



### OAHU

Aina Haina Elementary	Leilehua High
Campbell High	Mililani High
Highlands Inter	Moanalua High
Kaimuki High	Moanalua Middle
Kalani High	Pauoa Elementary
Kawananakoa Middle	Pearl City High
Kula Kaiapuni O Anuenue	Radford High



### MAUI

Baldwin High



### HAWAII

Waiakea High



# Report for June 22-26, 2020 | *Official Summer School*

STATEWIDE	Official Summer School*	
For the week ending: 06/26/2020		
Disproportionately Impacted Students	Students	Attendance
Junior/Senior	40	98.8%
Transition	38	100.0%
Failing grade (F's or DP/WB)	250	90.4%
Chronic Absentee	3	76.9%
9th Gr. Off-track	7	100.0%
504/Behavior Concerns	3	0.0%
EL: ELP 1 & 2	3	100.0%
Students who fall in multiple categories	62	97.2%
Not Disproportionately Impacted	2608	93.2%
TOTAL	3,014	93.1%

\*Week #4 Official Summer School totals include data from 15 schools.

**17+1**  
**schools**  
offering official  
summer school

STATEWIDE	Official Summer School	
For the week ending : 06/26/2020		
By Student Demographics	Students*	Attendance
SPED	122	86.6%
English Learners	65	93.0%
Homeless	22	71.7%
504	96	90.8%
Migrant	0	0%
None of the Above	2,724	93.7%

\*Students may be in one or more demographic categories

**E-School** is an official summer school online education option offered to students in grades 9-12.



# Report for June 22-26, 2020 | *Official Summer School*

STATEWIDE	Official Summer School											
Disproportionately Impacted Students	English Language Arts		Mathematics		Social Studies		Science		Other		TOTAL	
	Students	Attendance	Students	Attendance	Students	Attendance	Students	Attendance	Students	Attendance	Students	Attendance
Junior/Senior	1	*	10	100.0%	24	98.0%	4	100.0%	1	100.0%	40	98.8%
Transition	*	*	*	*	*	*	*	*	38	100.0%	38	100.0%
Failing grade (F's or DP/WB)	74	97.1%	69	89.6%	47	87.4%	25	82.6%	35	83.8%	250	90.4%
Chronic Absentee	1	25.0%	2	100.0%	*	*	*	*	*	*	3	76.9%
9th Gr. Off-track	3	100.0%	1	100.0%	*	*	3	100.0%	*	*	7	100.0%
504/Behavior Concerns	*	*	*	*	*	*	*	*	3	0.0%	3	0.0%
EL: ELP 1 & 2	*	*	*	*	*	*	1	*	2	100.0%	3	100.0%
Students who fall in multiple categories	24	98.7%	20	96.7%	12	90.9%	1	*	5	100.0%	62	97.2%
Not Disproportionately Impacted	192	98.8%	312	96.8%	493	98.9%	57	94.8%	1554	89.9%	2608	92.7%
TOTAL	295	98.1%	414	95.8%	576	98.0%	91	92.8%	1638	89.9%	3014	93.1%

\*No data available/reported this week



# Report for June 22-26, 2020 | *E-School Summer School*

**690 students  
enrolled by  
subgroups and  
courses**

STATEWIDE	E-School Summer School					
For the week ending: 06/26/2020	Course Enrollment					
By Student Demographics**	English Language Arts	Mathematics	Social Studies	Science	Other	Total Courses Enrolled
SPED	1	*	12	*	3	16
English Learners	2	5	5	*	2	14
Homeless	*	1	2	*	*	3
504	4	2	11	*	10	27
Migrant	1	--	6	--	--	7
None of the Above	62	117	551	--	185	915

\* No data available/reported this week

\*\*Students may be in one or more demographic category and be enrolled in more than one course.





# Report for June 22-26, 2020

*Credit Recovery (as of 06/26/2020)*

STATEWIDE	Credit Recovery*	
Disproportionately Impacted Students	Students	Attendance
Junior/Senior	57	99.4%
Transition	24	100.0%
Failing grade (F's or DP/WB)	408	51.2%
Chronic Absentee	*	*
9th Gr. Off-track	2	100.0%
504/Behavior Concerns	5	53.5%
EL: ELP 1&2	14	54.7%
Students who fall in multiple categories	32	21.3%
Not Disproportionately Impacted	1971	93.8%
TOTAL	2,513	65.6%

\*based on schools that identify the Disproportionately Impacted Students

**43**  
schools

**2,513**  
active  
participation

**11**  
content  
courses

STATEWIDE	Credit Recovery	
For the week ending: 06/26/2020		
Student Demographics**	Students	Attendance
SPED	332	56.7%
English Learners	287	55.6%
Homeless	65	45.6%
504	169	74.1%
Migrant	29	13.5%
None of the Above	1701	68.9%

\*\*Students may be in one or more demographic category



# School Based Opportunities

- *Disproportionately Impacted*
- *Demographic Subgroups*
- *Program Method*



Photo credit: Ilima Intermediate





# Report for June 22-26, 2020 | *School-Based Opportunities*

School-Based Opportunities vary both in design and delivery depending on the school and the needs of its students. During this week, 68.8% (+1.2% from week #3) of students were enrolled and were served through a school learning hub and 31.2% were served in a non-core, transition or mobile hub program. Five additional schools and 345 (+3.6% from week #3) more students participated in school-based learning opportunities this week..

**147**

schools

**10,049**

students  
enrolled

**80.1%**

disproportionately impacted  
students served



*Photo credit: Ilima Intermediate*



# Report for June 22-26, 2020 | *Disproportionately Impacted Students*

STATEWIDE	School-Based Opportunities									
For the week ending : 06/26/2020	Bridge/Transition		Non-Core		Remediation		Other		TOTAL	
Disproportionately Impacted Students	Students	Attendance	Students	Attendance	Students	Attendance	Students	Attendance	Students	Attendance
Junior/Senior	0	*	0	*	65	65.4%	64	44.6%	129	55.2%
Transition	788	79.9%	178	84.6%	14	92.9%	35	89.7%	1,015	81.3%
Failing grade (F's or DP/WB)	207	85.9%	461	80.2%	2,887	70.0%	183	67.9%	3,738	72.0%
Chronic Absentee	1	0.0%	11	63.6%	23	58.4%	2	50.0%	37	58.6%
9th Gr. Off-track	0	*	0	*	12	63.3%	7	25.0%	19	52.4%
Not meeting 3rd Grade Literacy	55	81.5%	21	68.8%	10	76.0%	2	83.3%	88	78.7%
504/Behavior Concerns	9	74.2%	27	80.9%	23	84.7%	2	90.0%	61	82.0%
EL: ELP 1 & 2	80	79.4%	163	48.4%	320	68.7%	33	85.0%	596	66.2%
Students who fall in multiple categories	455	84.3%	438	69.6%	1,165	80.2%	317	68.4%	2,375	77.7%
Not Disproportionately Impacted	60	86.7%	1,224	86.1%	258	83.6%	449	80.7%	1,991	84.5%
<b>TOTAL</b>	1,655	82.2%	2,523	79.7%	4,777	73.1%	1,094	73.2%	10,049	76.2%

\*No data available/reported this week





# Report for June 22-26, 2020 | *Demographic Subgroups*

STATEWIDE	School-Based Opportunities									
For the week ending : 06/26/2020	Bridge/Transition		Non-Core		Remediation		Other		TOTAL	
By Student Demographics	Students	Attendance	Students	Attendance	Students	Attendance	Students	Attendance	Students	Attendance
SPED	256	80.0%	321	73.5%	852	75.3%	119	73.5%	1,548	75.6%
English Learners	220	83.7%	405	71.5%	1,009	75.2%	222	79.3%	1,856	76.0%
Homeless	31	73.2%	31	55.6%	114	60.6%	23	57.3%	199	61.5%
504	61	80.7%	85	83.5%	177	73.2%	44	57.7%	367	75.0%
Migrant	16	93.8%	25	55.4%	34	76.1%	21	37.5%	96	64.1%
None of the Above	1,120	82.3%	1,748	82.2%	2,779	72.4%	713	73.3%	6,360	76.9%

The number of students taking advantage of summer learning opportunities during week 4 is at its highest enrollment. Attendance measures shown is the average number of days students attended for the week.

*Due to staggered start dates, information represented in the table is for schools with start dates of June 8, 2020. This data should not be compared with week 1 through week 3.*



# Report for June 22-26, 2020 | *Program Method*

STATEWIDE	School-Based Opportunities									
	Bridge/Transition		Non-Core		Remediation		Other		TOTAL	
For the week ending : 06/26/2020										
By Program Method	Students	Attendance	Students	Attendance	Students	Attendance	Students	Attendance	Students	Attendance
Online	1,002	78.9%	1,188	78.7%	1,090	75.2%	632	71.7%	3,912	76.6%
Face to Face	474	88.4%	655	83.1%	2,186	81.9%	182	94.5%	3,497	83.6%
Blended Learning	179	84.4%	621	78.4%	1,495	57.8%	248	60.3%	2,543	64.7%
Packet	0	*	1	0.0%	0	*	0	*	1	0.0%
Other	0	*	58	75.3%	6	95.2%	32	75.3%	96	76.4%
<b>TOTAL</b>	1,655	82.2%	2,523	79.7%	4,777	73.1%	1,094	73.2%	10,049	76.2%

\*No data available/reported this week

## Program Methods:

**Online** = Online instruction

**Face to Face** = In-person instruction

**Blended** = Combination of online and in-person instruction

**Packet** = Paper instruction

**Other** = Other instruction such as PBS

*Due to staggered start dates, information represented in the table is for schools with start dates of June 8, 2020.  
This data should not be compared with week 1 through week 3.*



# State-Level Programs

- *Extended School Year (ESY)*
- *Alternative Learning Program Support & Services (ALPSS)*
- *School Feeding Program*
- *Personal Protective Equipment (PPE)*
- *YES Project*

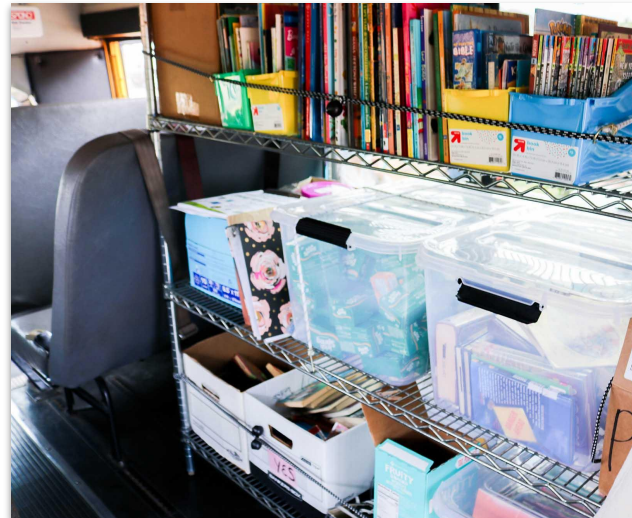


Photo credit: Kapolei Middle





# Report for June 22-26, 2020 | *Extended School Year (ESY)*



**244**

schools **(+108.5% from wk#3)**

**2,265**

students  
eligible

**968**

students served **(+78.3% from wk#3)**

For the week ending: 06/26/2020	ESY	
By Program Method	Students	Attendance
Online	146	88.6%
Face to Face	658	89.0%
Blended Learning	130	89.2%
Packet	20	73.3%
Other	14	55.9%
TOTAL	968	88.0%





# Report for June 22-26, 2020 | *Alternative Learning Program Support Services*

	Week 1 (06/01-06/05)	Week 2 (06/08-06/12)	Week 3 (06/15-06/19)	Week 4 (06/22-06/26)
# Student Participants	142	158	181	223*
# Sites	10	10	8	11
# ALPSS Teachers	15	16	16	13
# Courses Offered	18	20	24	5

*\*Count of participants include 68 students in a direct ALPSS program and 155 students in other summer learning opportunity programs that are being tutored by ALPSS teachers.*



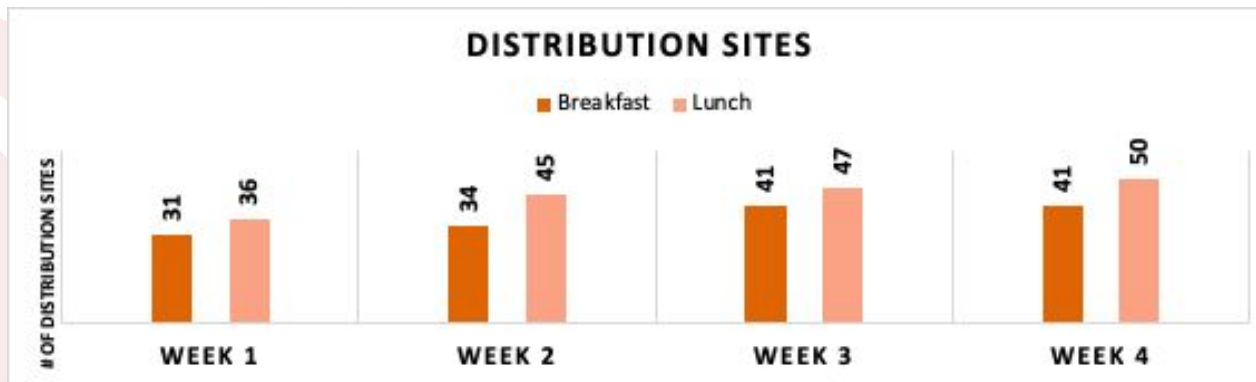
# Report for June 22-26, 2020 | *Meals*

## Statewide Distribution

(as of 6/30/2020)

*\*School self-reported counts*

	Week 1 (06/01-06/05)	Week 2 (06/08-06/12)	Week 3 (06/15-06/19)	Week 4 (06/22 - 06/26)
<b>Breakfast*</b>	12,439	8,965	16,556	16,552
<b>Lunch*</b>	30,565	23,943	38,633	40,141
<b>TOTAL</b>	43,004	32,908	55,189	56,693



*This is point in time data as of June 30, 2020, which is updated weekly.*



# Report for June 22-26, 2020 | *Personal Protective Equipment*

PPE Statewide Distribution (as of 6/30/2020)	
	Week 4 (06/22-06/26)
<b>Cloth Masks</b> to complex area and state offices	18,573
<b>Face Shields</b> for SpEd Teachers/EAs	1,879
<b>Clorox Wipe Packages</b>	100
<b>Hand Sanitizer</b> (gallons)	118
<b>Bleach Containers</b> for school cleaning	100



*Data as of June 30, 2020 (updated weekly). PPE inventory distribution is for summer learning/startup reopening for school year 2020-2021.*



# Report for June 22-26, 2020 | *The YES Project*

## WEEK ENDING 6/26/2020

# OF STUDENTS REACHED	7
# OF SCHOOLS / COMMUNITY SITES VISITED	10 / 5
SOURCE OF REFERRAL	Community Homeless Concerns Liaisons (CHCL), Principals, Registrar, Waipahu Safe Haven
WHAT WAS DELIVERED	School supplies, art supplies, hygiene items, McKinney Vento forms, CHCL business cards, Education for Homeless Children & Youth (EHCY) social worker contact information, and face masks
AGENCY CONNECTIONS MADE	Waikiki Health-Youth Outreach health coordinator, Residential Youth Services & Empowerment (RYSE) outreach team, Waipahu community health nurses (Department of Health) Waipahu Safe Haven, Volunteers in Service to America (VISTA) program.
ONLINE ACCESSIBILITY	Provided students with access to online accessibility, devices, and enrollment in online courses or distance learning packets. There is a continued need for more access to wifi capabilities across the community.

The pilot YES mobile hub project is a collaborative outreach initiative designed to deliver supports to children in unstable housing.







# Report for June 22-26, 2020 | *Highlight for the Week*

## Face-to-Face Learning

Schools, such as Mokulele Elementary, are finding ways to provide face-to-face learning opportunities for students. Schools are continuing to support students by providing additional morning and afternoon sessions in order to abide by social distancing guidelines.



Photo credit: Mokulele Elementary



Students who attend school for face-to-face instruction are following all safety protocols (i.e., handwashing and mask wearing).



## Looking Ahead | *Summary*

- This week's report represents the mid-point of the 2020 summer learning programs. Some schools have started to conclude their summer opportunities and the count of schools and the number of students served will gradually start to decline after next week's report.
- Kea'au Elementary's summer learning program was highlighted in HIDOE's monthly *Ho'oha'aheo* newsletter, where roughly 20% of students are participating in the school's virtual and face-to-face models. Read the article at [bit.ly/KeaauElSummerLearning](https://bit.ly/KeaauElSummerLearning).