



2020 Summer Learning

Hawai'i State Department of Education

Dr. Christina M. Kishimoto
Superintendent

Weekly Report
June 29-July 2, 2020

Submitted to the Hawaii State Board of Education on July 10, 2020





HIDOE Phases of Design and Delivery

Continuity of Learning through COVID-19

Phase 1

Continuity of School
Year 2019-20 & Initiating
Department Support
Services

Phase 2

**Summer Learning &
Transition Planning**

Phase 3

Planning for Reopening:
School Year 2020-21

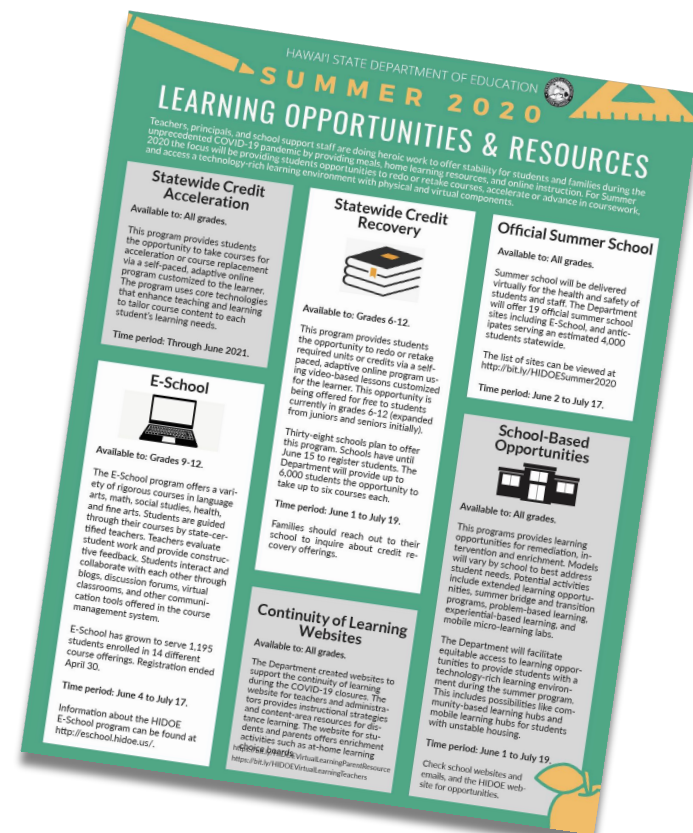
We designed an expanded summer learning approach that focuses on addressing student learning needs as well as service, design and innovation. Due to the extensive closure of school buildings, which totaled 46 days for SY 19-20, the Department is maximizing summer learning opportunities in order to re-engage students and ensure they are ready to transition. Between June 1-July 17, schools will continue to implement programming to support the unique needs of their students.



HIDOE Phase 2

Summer Learning & Transition Planning

- Provides special education and related services to students through Extended School Year (ESY) programs.
- Expands online distance learning instructional delivery for safety and alternative scheduling for summer school.
- Offers statewide credit recovery opportunities targeting students who did not meet proficiency, at no cost to students grades 6-12 (expanded from juniors and seniors initially).
- Launch school-based summer learning opportunities, including extended learning, kinder boosts, targeted enrichment, mobile learning hubs, outreach and community-based learning hubs.





Report for June 29 - July 2

*Summer Learning 2020
Overview*



Photo credit: Haleiwa Elementary



What's included this week. . .

Report Reflects Data Collected from Active Statewide
Summer Learning Opportunities Offered During
the Week of June 29 - July 2, 2020

Total Summer
Learning
Opportunity
Programs: 8

As of
7/02/2020

Official Summer Schools

14

Credit Recovery Schools

45

E-School Official Summer School

1

School-Based Opportunities

135

State Level Programs

2

ALPSS

10

ESY Sites

54

Total Summer Learning Opportunities Offered

261

(-43.3% from Wk#4)



Report for June 29-July 2, 2020 | *Data Collection Process and Overview*



Reporting

The week of June 29 - July 2 represents the final week of reporting for many of the summer school programs. As of July 2, five of the seventeen official summer schools completed its programming.



Student Participants

This week, we serviced 17,062 students, a reduction of 1,661 students due to school programs nearing the end of summer learning opportunities.
The number of students engaged with credit recovery increased by 236.



Unique Data Sets

The data sets contained in this report cannot be compared from week to week. These data sets highlight varying groups of students, types of courses and programs that reflect the uniqueness of the schools and its students.



Overview of 2020 Summer Programs

17+1

Official Summer School Sites

Offered at 17 schools where instruction will be delivered virtually.

E-School is an official summer school online education option offered to students in grades 9-12.

- 17 Official Summer School
- E-School - also considered an official summer school

219

School-Based Opportunities

Will vary both in design and delivery depending on the school and the program.

- Examples include:
- Learning Hubs
 - Transitions
 - Mobile Hubs

193

Extended School Year (ESY)

Available at 193 schools for eligible students with disabilities

- Determined by students' Individualized Educational Program (IEP)

To see which schools are offering these programs, please visit the **Summer 2020 Learning Opportunities Dashboard** at <https://tabsoft.co/3f3aCsP>.



Summer Programs

- *Official Summer School*
- *E-School*
- *Credit Recovery*



Photo credit: @MiliLaff, Twitter

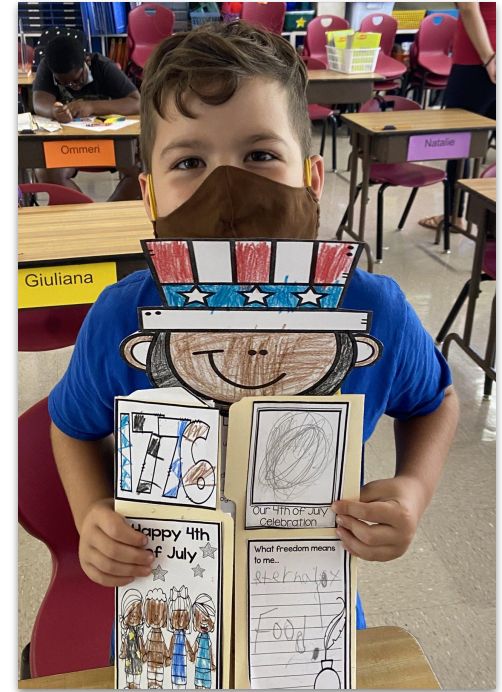


Photo credit: Wheeler Elementary

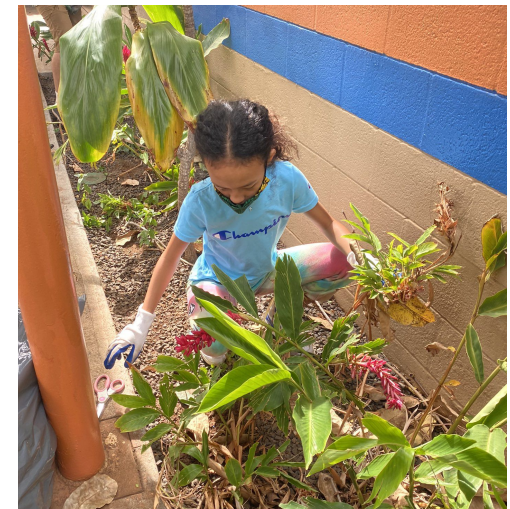


Photo credit: @MiliLaff, Twitter



Report for June 29-July 2, 2020 | *Official Summer School*

List of Summer School Sites

KAUAI

Kapa'a High*

OAHU

Aina Haina Elementary*	Leilehua High
Campbell High	Mililani High
Highlands Inter	Moanalua High
Kaimuki High	Moanalua Middle*
Kalani High	Pauoa Elementary*
Kawananakoa Middle	Pearl City High
Kula Kaiapuni O Anuenue*	Radford High

MAUI

Baldwin High

HAWAII

Waiakea High

E-School is an official summer school online education option offered to students in grades 9-12.

**Summer Schools that ended week of June 29-July 2, 2020*



Report for June 29-July 2, 2020 | *Official Summer School*

STATEWIDE	Official Summer School*	
For the week ending: 07/02/2020		
Disproportionately Impacted Students	Students	Attendance
Junior/Senior	32	97.6%
Transition	*	*
Failing grade (F's or DP/WB)	221	86.8%
Chronic Absentee	5	66.7%
9th Gr. Off-track	4	100.0%
504/Behavior Concerns	4	15.0%
EL: ELP 1 & 2	1	100.0%
Students who fall in multiple categories	12	80.3%
Not Disproportionately Impacted	3064	91.8%
TOTAL	3,343	91.3%

*Week #5 Official Summer School totals include data from 14 schools.

17+1
schools
offering official
summer school

STATEWIDE	Official Summer School	
For the week ending : 07/02/2020		
By Student Demographics	Students*	Attendance
SPED	166	86.6%
English Learners	84	87.9%
Homeless	21	67.4%
504	122	89.8%
Migrant	0	0%
None of the Above	2,976	91.9%

*Students may be in one or more demographic categories

E-School is an official summer school online education option offered to students in grades 9-12.



Report for June 29-July 2, 2020 | *Official Summer School*

STATEWIDE	Official Summer School											
Disproportionately Impacted Students	English Language Arts		Mathematics		Social Studies		Science		Other		TOTAL	
	Students	Attendance	Students	Attendance	Students	Attendance	Students	Attendance	Students	Attendance	Students	Attendance
Junior/Senior		*	6	95.8%	20	97.5%	3	100.0%	3	85.7%	32	97.6%
Transition		*		*		*		*		*		*
Failing grade (F's or DP/WB)	56	98.6%	41	98.7%	31	98.4%	11	91.7%	221	86.8%	221	86.8%
Chronic Absentee		*		*		*		*	5	66.7*	5	66.7%
9th Gr. Off-track		*		*		*		*	4	100.0*	4	100.0%
504/Behavior Concerns		*		*		*		*	4	15.0%	4	15.0%
EL: ELP 1 & 2		*		*		*		*	1	100.0%	1	100.0%
Students who fall in multiple categories	4	100.0%		*	3	90.9%		*	5	82.6%	12	80.3%
Not Disproportionately Impacted	66	98.6%	251	94.8%	254	99.5%	52	93.8%	2,441	78.0%	3,064	91.8%
TOTAL	126	98.7%	298	95.3%	308	99.5%	66	93.7%	2,545	78.0%	3,343	91.3%

*No data available/reported this week



Report for June 29-July 2, 2020 | *E-School Summer School*

**690 students
enrolled by
subgroups and
courses**

STATEWIDE	E-School Summer School					
For the week ending: 07/02/2020	Course Enrollment					
By Student Demographics**	English Language Arts	Mathematics	Social Studies	Science	Other	Total Courses Enrolled
SPED	1	*	12	*	3	16
English Learners	2	5	5	*	2	14
Homeless	*	1	2	*	*	3
504	4	2	11	*	10	27
Migrant	1	--	6	--	--	7
None of the Above	62	117	551	--	185	915

* No data available/reported this week

**Students may be in one or more demographic category and be enrolled in more than one course.



Report for June 29-July 2, 2020 | Credit Recovery (as of 07/02/2020)

STATEWIDE	Credit Recovery*	
Disproportionately Impacted Students	Students	Attendance
Junior/Senior	65	98.9%
Transition	25	100.0%
Failing grade (F's or DP/WB)	325	51.5%
Chronic Absentee	*	*
9th Gr. Off-track	2	100.0%
504/Behavior Concerns	*	*
EL: ELP 1&2	*	*
Students who fall in multiple categories	245	35.3%
Not Disproportionately Impacted	2,087	100.0%
TOTAL	2,749	50.2%

*based on schools that identify the Disproportionately Impacted Students

45
schools

2,749
active
participation

11
content
courses

STATEWIDE	Credit Recovery	
For the week ending: 07/02/2020		
Student Demographics**	Students	Attendance
SPED	369	37.7%
English Learners	292	43.3%
Homeless	96	55.3%
504	170	79.5%
Migrant	29	12.5%
None of the Above	1,867	52.2%

**Students may be in one or more demographic category



School Based Opportunities

- *Disproportionately Impacted*
- *Demographic Subgroups*
- *Program Method*



Photo credit: Kanoelani Elementary, Instagram



Report for June 29-July 2, 2020 | *School-Based Opportunities*

School-Based Opportunities vary both in design and delivery depending on the school and the needs of its students. During this week, 69.8% (+1.0% from week #4) of students were enrolled and were served through a school learning hub and 30.2% were served in a non-core, transition or mobile hub program. As schools begin wrapping up this year's summer learning programs, there were fifteen less schools and 732 (-7.3% from week #4) less students participating in school-based learning opportunities this week.

135

schools

9,317

students
enrolled

80.7%

disproportionately impacted
students served



Photo credit: Wheeler Elementary, Twitter



Report for June 29-July 2, 2020 | *Disproportionately Impacted Students*

STATEWIDE	School-Based Opportunities									
For the week ending : 07/02/2020	Bridge/Transition		Non-Core		Remediation		Other		TOTAL	
Disproportionately Impacted Students	Students	Attendance	Students	Attendance	Students	Attendance	Students	Attendance	Students	Attendance
Junior/Senior	1	100.0%	0	*	12	60.0%	64	57.9%	77	58.7%
Transition	821	76.6%	175	87.0%	21	88.5%	43	92.4%	1,060	79.2%
Failing grade (F's or DP/WB)	176	85.7%	435	79.5%	2,642	65.5%	182	64.6%	3,435	68.1%
Chronic Absentee	0	*	4	93.8%	19	55.3%	1	0.0%	24	59.4%
9th Gr. Off-track	0	*	0	*	5	80.0%	7	60.0%	12	70.0%
Not meeting 3rd Grade Literacy	54	92.9%	9	76.0%	10	90.0%	2	100.0%	75	90.9%
504/Behavior Concerns	2	50.0%	19	95.3%	18	93.2%	2	50.0%	41	89.5%
EL: ELP 1 & 2	95	71.5%	115	40.1%	292	65.7%	26	77.5%	528	61.9%
Students who fall in multiple categories	436	79.2%	405	68.5%	1,144	77.3%	288	66.8%	2,273	75.0%
Not Disproportionately Impacted	27	67.6%	1,167	86.9%	310	80.4%	288	79.0%	1,792	84.1%
TOTAL	1,612	78.3%	2,329	80.1%	4,473	69.9%	903	71.2%	9,317	73.9%

*No data available/reported this week



Report for June 29-July 2, 2020 | *Demographic Subgroups*

STATEWIDE	School-Based Opportunities									
For the week ending : 07/02/2020	Bridge/Transition		Non-Core		Remediation		Other		TOTAL	
By Student Demographics	Students	Attendance	Students	Attendance	Students	Attendance	Students	Attendance	Students	Attendance
SPED	240	74.5%	287	74.6%	783	70.8%	110	71.3%	1,420	72.2%
English Learners	260	74.5%	356	70.4%	1,032	74.1%	201	78.0%	1,849	73.9%
Homeless	39	68.6%	32	68.3%	119	55.1%	18	80.0%	208	61.8%
504	56	86.0%	78	81.5%	165	73.6%	41	58.5%	340	75.7%
Migrant	16	90.2%	1	100.0%	19	89.5%	21	36.1%	57	70.1%
None of the Above	1,061	79.2%	1,653	82.7%	2,537	68.3%	557	70.6%	5,808	74.4%

The number of students taking advantage of summer learning opportunities during week 5 is at its highest enrollment. Attendance measures shown is the average number of days students attended for the week.

Due to staggered start dates, information represented in the table is for schools with start dates of June 8, 2020. This data should not be compared with week 1 through week 4.



Report for June 29-July 2, 2020 | *Program Method*

STATEWIDE	School-Based Opportunities									
	Bridge/Transition		Non-Core		Remediation		Other		TOTAL	
For the week ending :07/02/2020	Students	Attendance	Students	Attendance	Students	Attendance	Students	Attendance	Students	Attendance
By Program Method	Students	Attendance	Students	Attendance	Students	Attendance	Students	Attendance	Students	Attendance
Online	923	73.9%	1,118	79.6%	846	74.3%	446	75.4%	3,333	76.1%
Face to Face	476	84.5%	671	83.0%	2,197	78.4%	89	87.6%	3,433	80.4%
Blended Learning	213	84.1%	480	77.6%	1,424	53.3%	346	61.2%	2,463	61.5%
Packet	0	*	1	0.0%	0	*	0	*	1	0.0%
Other	0	*	59	77.4%	6	88.9%	22	74.4%	87	77.3%
TOTAL	1,612	78.3%	2,329	80.1%	4,473	69.9%	903	71.2%	9,317	73.9%

Program Methods:

Online = Online instruction

Face to Face = In-person instruction

Blended = Combination of online and in-person instruction

Packet = Paper instruction

Other = Other instruction such as PBS

*Due to staggered start dates, information represented in the table is for schools with start dates of June 8, 2020.
This data should not be compared with week 1 through week 4*



State-Level Programs

- *Extended School Year (ESY)*
- *Alternative Learning Program Support & Services (ALPSS)*
- *School Feeding Program*
- *Personal Protective Equipment (PPE)*
- *YES Project*



Photo credit: Kapolei Middle



Report for June 29-July 2, 2020 | *Extended School Year (ESY)*



54

schools (-74.8% from wk#4)

2,265

students
eligible

369

students served (-61.9% from wk#4)

For the week ending: 07/02/2020	ESY	
By Program Method	Students	Attendance
Online	66	86.4%
Face to Face	259	89.6%
Blended Learning	32	100.0%
Packet	10	80.0%
Other	2	0.0%
TOTAL	369	89.2%



Report for June 29-July 2, 2020 | *Alternative Learning Program Support Services*

		Week 1 (06/01-06/05)	Week 2 (06/08-06/12)	Week 3 (06/15-06/19)	Week 4 (06/22-06/26)	Week 5 (06/29-07/02)
#	Student Participants	142	158	181	223	239*
#	Sites	10	10	8	11	10
#	ALPSS Teachers	15	16	16	13	16
#	Courses Offered	18	20	24	24**	24

**Count of participants include 85 students in a direct ALPSS program and 154 students in other summer learning opportunity programs that are being tutored by ALPSS teachers.*

***Revised to reflect the count of courses (last week's report errantly reported count of subjects)*



Report for June 29-July 2, 2020 | *Meals*

Statewide Distribution

(as of 7/7/2020)

**School self-reported counts*

	Week 1 (06/01-06/05)	Week 2 (06/08-06/12)	Week 3 (06/15-06/19)	Week 4 (06/22 - 06/26)	Week 5 (06/29-07/02)
Breakfast*	12,439	8,965	16,556	16,552	12,307
Lunch*	30,565	23,943	38,633	40,141	28,082
TOTAL	43,004	32,908	55,189	56,693	40,389

DISTRIBUTION SITES



This is point in time data as of July 7, 2020, which is updated weekly. July 2, 2020 is an observed state holiday.



Report for June 29-July 2, 2020 | *Personal Protective Equipment*

PPE Statewide Distribution (as of 07/02/2020)

	Week 5 (06/29-07/02)
Gloves for Complex Area Staff	15,700
Face Shields for Complex Area Front Office Staff	2,016
Isolation Gowns for Complex Area Emergencies	90



Photo credit: Pearl City Highlands Elementary

Data as of June 29, 2020 (updated weekly). PPE inventory distribution is for summer learning/startup reopening for school year 2020-2021.



Report for June 29-July 2, 2020 | *The YES Project*

WEEK ENDING 07/02/2020

# OF STUDENTS REACHED	130
# OF SCHOOLS / COMMUNITY SITES VISITED	7 / 8
SOURCE OF REFERRAL	Waipahu Safe Haven, Volunteers in Service to America (VISTA) Program Interns, Department of Health (DOH) Public Health Nurses, Community Homeless Concerns Liaisons
WHAT WAS DELIVERED	Books, art supplies, non-perishable food, telehealth forms, McKinney-Vento forms, hygiene supplies, Education for Homeless Children & Youth (EHCY) program information, liaison contact information, masks, and purposity flyers

AGENCY CONNECTIONS MADE	Waipahu Safe Haven, VISTA program interns, DOH public health nurses, DOE Grab n Go sites, Waianae public housing
ONLINE ACCESSIBILITY	Most students received paper packets, if online access was not available. In one instance, a homeless liaison was able to successfully connect and coordinate a meeting between a family and the school. The school had been trying to get a hold of the family for a few months. There is a continued need for increased access and stable use to WIFI connections for multiple devices.

The pilot YES mobile hub project is a collaborative outreach initiative designed to deliver supports to children in unstable housing.





Report for June 29-July 2, 2020 | *Highlight for the Week*

Aliamanu Elementary offered a summer learning program that integrated art, math, and science. Students were involved in engaging, hands-on opportunities, while following social distancing guidelines. In an art course, students studied social justice issues and created paintings that used color and art techniques to express their thoughts and feelings.

In addition to face-to-face opportunities, students were also offered daily WEBEX Art Meet-Ups for those at home. Fifteen to twenty students met daily via Webex to participate in these lessons.



Photo credit: Aliamanu Elementary



Looking Ahead | *Summary*

- July 2 marked the completion of many of the summer learning opportunities and we anticipate a reduction in the number of offerings and students in the subsequent reports.
- The summer programs provided an opportunity for schools to consider different protocols and processes to assist with the reopening of school plans.