



# 2020 Summer Learning

## Hawai'i State Department of Education

**Dr. Christina M. Kishimoto**  
*Superintendent*

**Weekly Report**  
**July 6-10, 2020**

Submitted to the Hawaii State Board of Education on July 17, 2020





# HIDOE Phases of Design and Delivery

## *Continuity of Learning through COVID-19*

### Phase 1

Continuity of School  
Year 2019-20 & Initiating  
Department Support  
Services

### Phase 2

**Summer Learning &  
Transition Planning**

### Phase 3

Planning for Reopening:  
School Year 2020-21

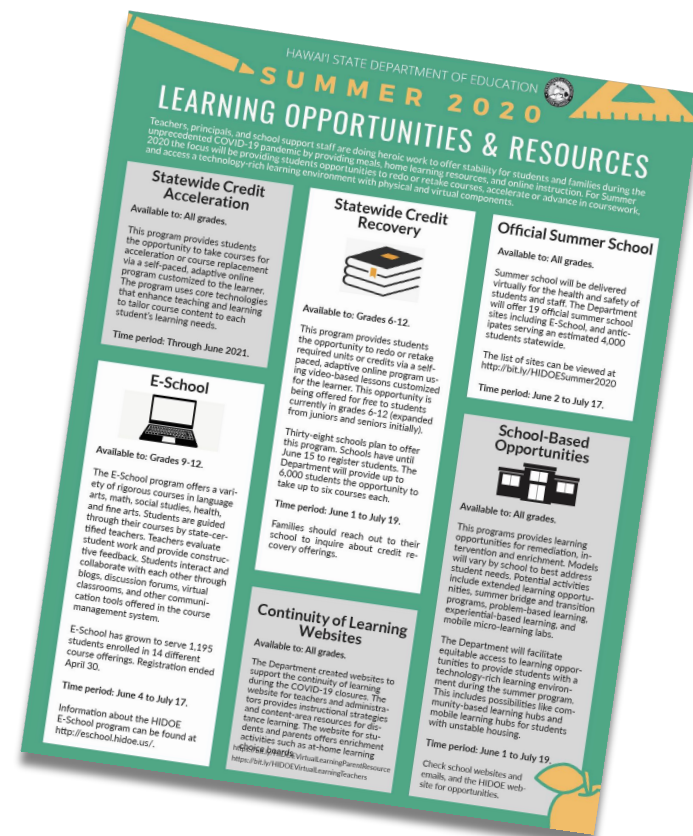
We designed an expanded summer learning approach that focuses on addressing student learning needs as well as service, design and innovation. Due to the extensive closure of school buildings, which totaled 46 days for SY 19-20, the Department is maximizing summer learning opportunities in order to re-engage students and ensure they are ready to transition. Between June 1-July 17, schools will continue to implement programming to support the unique needs of their students.



# HIDOE Phase 2

## Summer Learning & Transition Planning

- Provides special education and related services to students through Extended School Year (ESY) programs.
- Expands online distance learning instructional delivery for safety and alternative scheduling for summer school.
- Offers statewide credit recovery opportunities targeting students who did not meet proficiency, at no cost to students grades 6-12 (expanded from juniors and seniors initially).
- Launch school-based summer learning opportunities, including extended learning, kinder boosts, targeted enrichment, mobile learning hubs, outreach and community-based learning hubs.

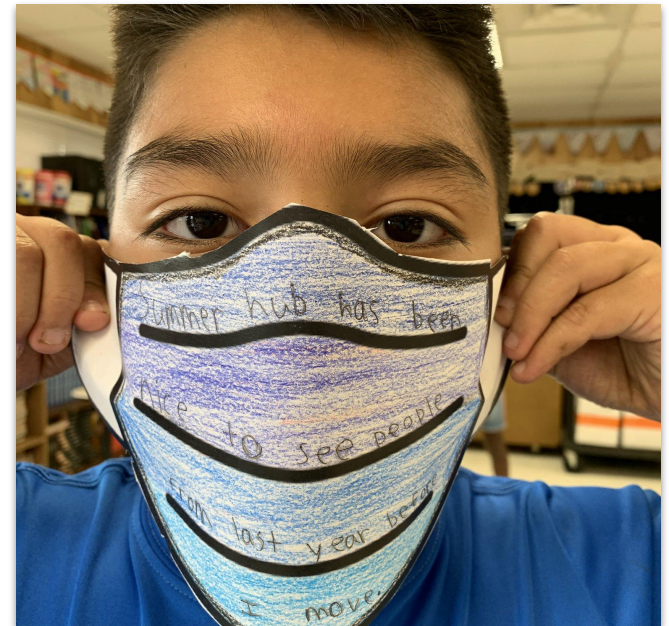






# Report for July 6-10

*Summer Learning 2020  
Overview*



*Photo credit: Wheeler Elementary, Twitter*



# What's included this week. . .

Report reflects data collected from active statewide summer learning opportunities offered during the week of July 6-10.

**Total Summer Learning Opportunity Programs: 7\***

**As of  
7/10/2020**

**Official Summer Schools**

8

**Credit Recovery Schools**

46

**E-School Official Summer School**

1

**School-Based Opportunities**

63

**State Level Programs**

**ALPSS**

10

**ESY Sites**

122

**Total Summer Learning Opportunities Offered**

**250**

**(-4.2% from Wk#5)**

\*No PPEs were distributed in Week #6



# Report for July 6-10, 2020 | *Data Collection Process and Overview*



## Reporting

From this week forward, the data for low socioeconomic status (SES) students who receive free or reduced lunches will be included as a demographic subgroup. This subgroup will also be represented in the final report for all weeks (including weeks 1 - 5).



## Student Participants

This week, we served 10,594 students (in Official Summer School, Credit Recovery, e-School, Summer-Based Opportunities, ESY, ALPSS, and The Yes project programs); a decrease of -8,129 students from week 5. Most of the decrease (6,033 or 74%) were due to the ending of Summer-Based Opportunities programs in the prior week.



## Unique Data Sets

The data sets contained in this report cannot be compared from week to week. These data sets highlight varying groups of students, types of courses and programs that reflect the uniqueness of the schools and its students.





# Overview of 2020 Summer Programs

17+1

## Official Summer School Sites

Offered at 17 schools where instruction will be delivered virtually.

**E-School** is an official summer school online education option offered to students in grades 9-12.

- 17 Official Summer School
- E-School - also considered an official summer school

219

## School-Based Opportunities

Will vary both in design and delivery depending on the school and the program.

Examples include:

- Learning Hubs
- Transitions
- Mobile Hubs

193

## Extended School Year (ESY)

Available at 193 schools for eligible students with disabilities

- Determined by students' Individualized Educational Program (IEP)

To see which schools are offering these programs, please visit the **Summer 2020 Learning Opportunities Dashboard** at <https://tabsoft.co/3f3aCsP>.



# Summer Programs

- *Official Summer School*
- *E-School*
- *Credit Recovery*

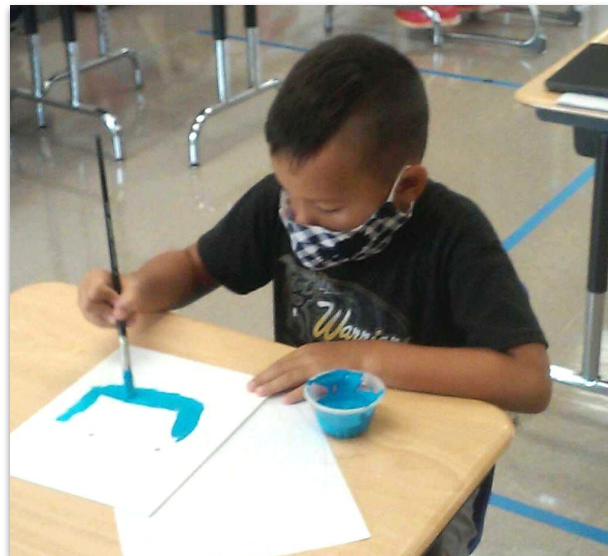
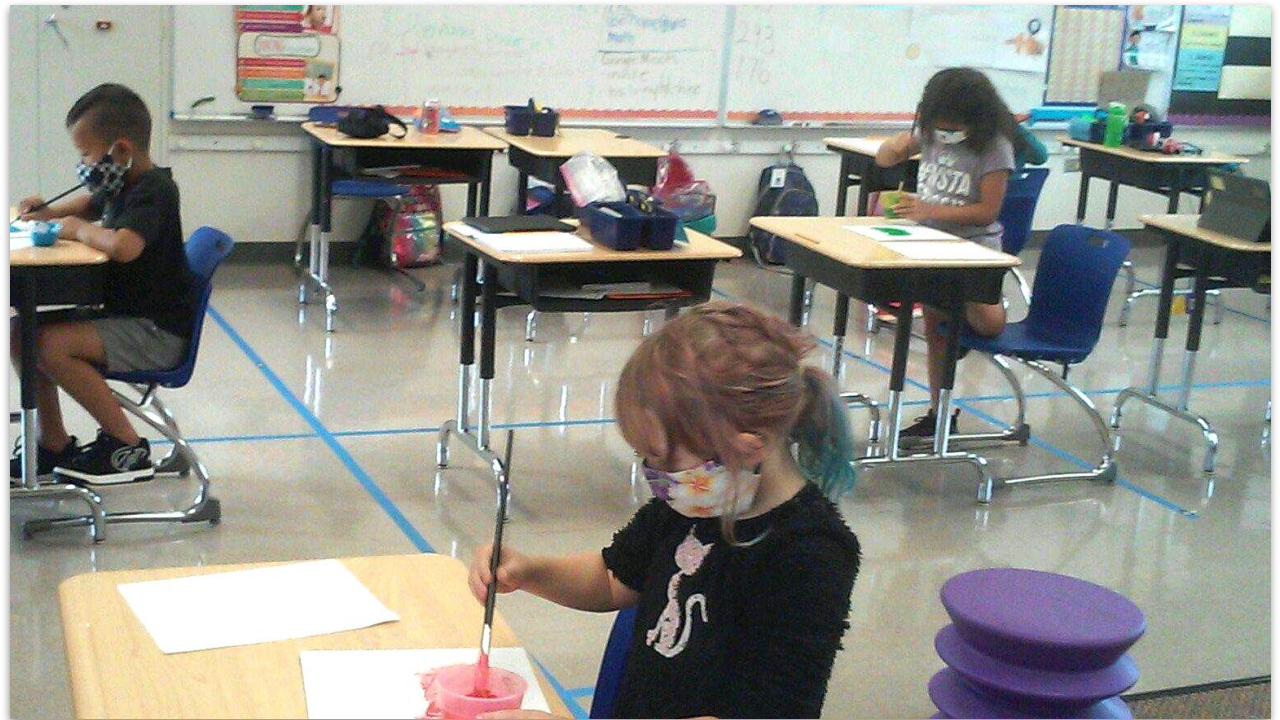


Photo credit: Wheeler Elementary, Twitter





# Report for July 6-10, 2020 | *Official Summer School*

## List of Summer School Sites



### KAUAI

Kapa'a High\*



### OAHU

Aina Haina Elementary\*

Campbell High\*

Highlands Inter\*

Kaimuki High\*

Kalani High\*

Kawananakoa Middle\*

Kula Kaiapuni O Anuenue\*

Leilehua High\*

Mililani High\*

Moanalua High

Moanalua Middle\*

Pauoa Elementary\*

Pearl City High\*

Radford High\*



### MAUI

Baldwin High\*



### HAWAII

Waiakea High\*

*E-School is an official summer school online education option offered to students in grades 9-12.*

*\*16 Summer Schools have ended as of July 10, 2020. Moanalua High School ends on July 17, 2020*



# Report for July 6-10, 2020 | *Official Summer School*

STATEWIDE	Official Summer School*	
For the week ending: 07/10/2020		
Disproportionately Impacted Students	Students	Attendance
Junior/Senior	29	99.1%
Transition	*	*
Failing grade (F's or DP/WB)	229	90.7%
Chronic Absentee	5	52.9%
9th Gr. Off-track	4	100.0%
504/Behavior Concerns	1	100.0%
EL: ELP 1 & 2	1	100.0%
Students who fall in multiple categories	4	62.5%
Not Disproportionately Impacted	1,605	97.6%
TOTAL	1,878	96.6%

\*Week #6 Official Summer School totals include data from 10 of 12 schools active this week.

**17+1**  
**schools**  
offering official  
summer school

STATEWIDE	Official Summer School	
For the week ending : 07/10/2020		
By Student Demographics	Students*	Attendance
SPED	86	95.0%
Low SES	440	94.2%
English Learners	51	94.6%
Homeless	15	93.4%
504	69	98.6%
Migrant	0	0%
None of the Above	1,358	97.4%

\*Students may be in one or more demographic categories

**E-School** is an official summer school online education option offered to students in grades 9-12.



# Report for July 6-10, 2020 | *Official Summer School*

STATEWIDE	Official Summer School											
Disproportionately Impacted Students	English Language Arts		Mathematics		Social Studies		Science		Other		TOTAL	
	Students	Attendance	Students	Attendance	Students	Attendance	Students	Attendance	Students	Attendance	Students	Attendance
Junior/Senior		*	6	100.0%	19	98.7%	3	100.0%	1	100.0%	29	99.1%
Transition		*		*		*		*		*		*
Failing grade (F's or DP/WB)	69	96.2	46	94.7%	40	95.4%	10	100.0%	64	77.3%	229	90.7%
Chronic Absentee		*		*		*		*	5	52.9%	5	52.9%
9th Gr. Off-track	3	100.0%		*		*	1	100.0%		*	4	100.0%
504/Behavior Concerns		*		*		*		*	1	100.0%	1	100.0%
EL: ELP 1 & 2		*		*		*		*	1	100.0%	1	100.0%
Students who fall in multiple categories		*		*		*		*	4	62.5%	4	62.5%
Not Disproportionately Impacted	127	99.3%	274	96.0%	225	99.1%	52	95.6%	927	97.5%	1,605	97.6%
TOTAL	199	98.2%	326	95.9%	284	98.6%	66	96.5%	1,003	96.0%	1,878	96.6%

\*No data available/reported this week





# Report for July 6-10, 2020 | *E-School Summer School*

**690 students  
enrolled by  
subgroups and  
courses**

STATEWIDE	E-School Summer School					
For the week ending: 07/10/2020	Course Enrollment					
By Student Demographics**	English Language Arts	Mathematics	Social Studies	Science	Other	Total Courses Enrolled
SPED	1	*	12	*	3	<b>16</b>
English Learners	2	5	5	*	2	<b>14</b>
Low SES	7	31	99	*	31	<b>168</b>
Homeless	*	1	2	*	*	<b>3</b>
504	4	2	11	*	10	<b>27</b>
Migrant	1	--	6	--	--	<b>7</b>
None of the Above	58	89	462	--	157	<b>766</b>

\* No data available/reported this week

\*\*Students may be in one or more demographic category and be enrolled in more than one course.



# Report for July 6-10, 2020 | Credit Recovery (as of 07/02/2020)

STATEWIDE	Credit Recovery*	
Disproportionately Impacted Students	Students	Attendance
Junior/Senior	47	21.8%
Transition	1	100.0%
Failing grade (F's or DP/WB)	483	56.3%
Chronic Absentee	*	*
9th Gr. Off-track	2	0.0%
504/Behavior Concerns	5	0.0%
EL: ELP 1&2	14	0.0%
Students who fall in multiple categories	214	0.0%
Not Disproportionately Impacted	2,031	9.2%
TOTAL	2,797	36.6%

\*based on schools that identify the Disproportionately Impacted Students

**46**  
schools

**2,797**  
active  
participation

**11**  
content  
courses

STATEWIDE	Credit Recovery	
For the week ending: 07/10/2020		
Student Demographics**	Students	Attendance
SPED	367	48.4%
English Learners	277	56.1%
Low SES	1,519	56.1%
Homeless	101	56.5%
504	170	73.9%
Migrant		*
None of the Above	596	73.1%

\*No data

\*\*Students may be in one or more demographic category



# School Based Opportunities

- *Disproportionately Impacted*
- *Demographic Subgroups*
- *Program Method*

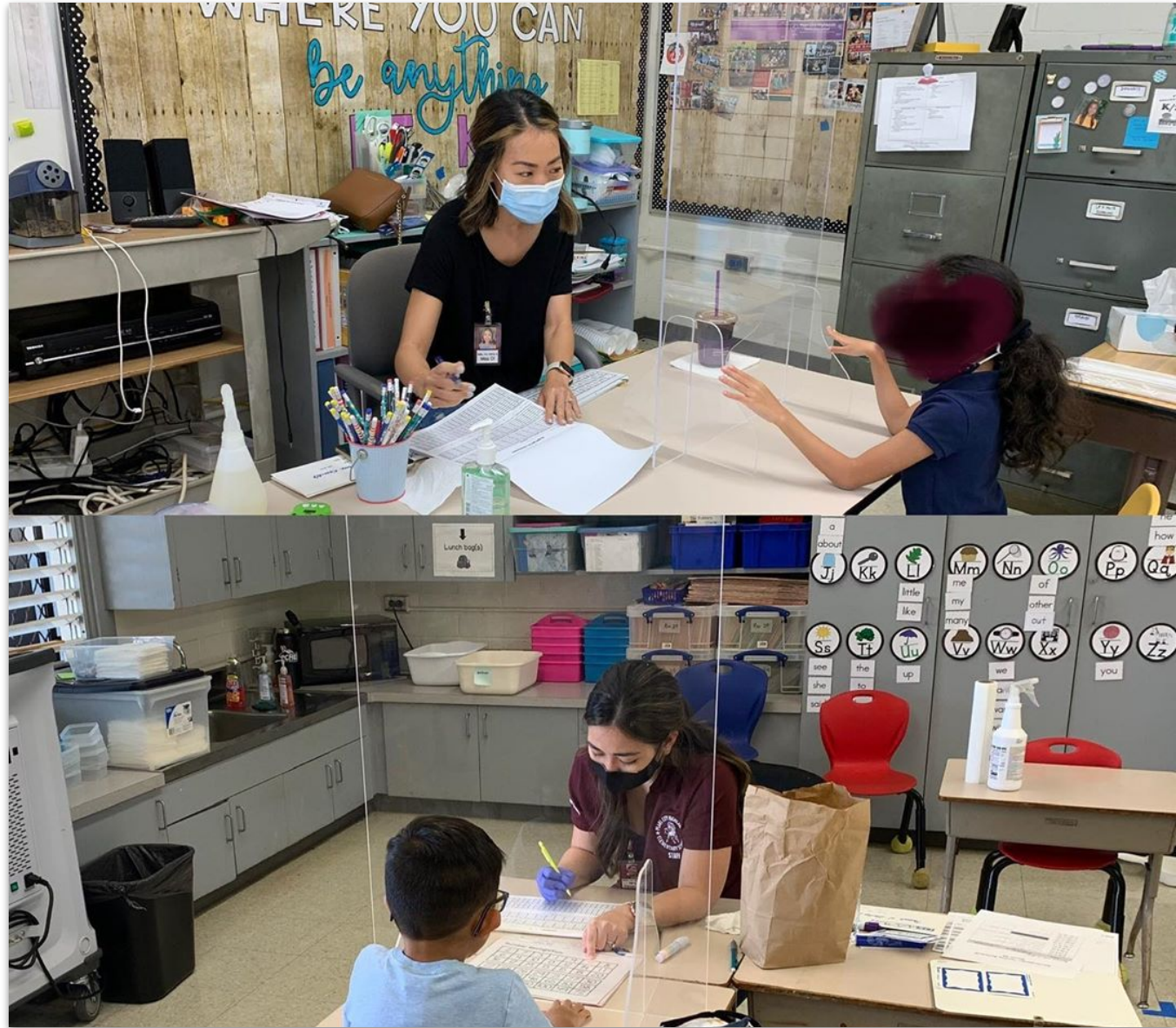


Photo credit: Pearl City Highlands Elementary, Instagram





# Report for July 6-10, 2020 | *School-Based Opportunities*

School-based opportunities vary both in design and delivery depending on the school and the needs of its students. During this week, 60.9% (-8.9% from week #5) of students were enrolled and were served through a school learning hub and 39.1% were served in a non-core, transition or mobile hub program. As schools begin wrapping up this year's summer learning programs, there were 9 less schools and 5,301 (-56.9% from week #5) less students participating in school-based learning opportunities this week.

**63**

schools

**4,016**

students  
enrolled

**70.8%**

disproportionately impacted  
students served



*Photo credit: Nanaikapono Elementary, Twitter*



# Report for July 6-10, 2020 | *Disproportionately Impacted Students*

STATEWIDE	School-Based Opportunities									
For the week ending : 07/10/2020	Bridge/Transition		Non-Core		Remediation		Other		TOTAL	
Disproportionately Impacted Students	Students	Attendance	Students	Attendance	Students	Attendance	Students	Attendance	Students	Attendance
Junior/Senior	1	100.0%	0	*	11	58.2%	6	33.3%	18	54.5%
Transition	472	68.5%	25	63.2%	19	90.1%	0	*	516	69.1%
Failing grade (F's or DP/WB)	18	79.1%	261	74.5%	633	76.9%	123	50.3%	1,035	73.3%
Chronic Absentee	0	*	0	*	1	60.0%	1	0.0%	2	30.0%
9th Gr. Off-track	0	*	0	*	5	80.0%	6	55.6%	11	69.8%
Not meeting 3rd Grade Literacy	0	*	6	61.5%	2	100.0%	1	100.0%	9	78.3%
504/Behavior Concerns	2	50.0%	9	86.7%	8	95.0%	0	*	19	87.1%
EL: ELP 1 & 2	88	71.8%	20	82.4%	33	70.6%	27	61.8%	168	71.1%
Students who fall in multiple categories	173	73.3%	299	60.3%	513	66.8%	81	54.7%	1,066	65.2%
Not Disproportionately Impacted	13	69.2%	1,040	87.5%	41	78.5%	78	67.6%	1,172	85.4%
<b>TOTAL</b>	<b>767</b>	<b>70.1%</b>	<b>1,660</b>	<b>79.6%</b>	<b>1,266</b>	<b>72.6%</b>	<b>323</b>	<b>56.9%</b>	<b>4,016</b>	<b>73.8%</b>

\*No data available/reported this week



# Report for July 6-10, 2020 | *Demographic Subgroups*

STATEWIDE	School-Based Opportunities									
For the week ending : 07/10/2020	Bridge/Transition		Non-Core		Remediation		Other		TOTAL	
By Student Demographics	Students	Attendance	Students	Attendance	Students	Attendance	Students	Attendance	Students	Attendance
SPED	93	62.8%	181	68.7%	239	67.0%	49	66.2%	562	66.8%
English Learners	174	73.4%	134	82.4%	258	75.6%	95	66.1%	661	75.2%
Low SES	355	65.2%	565	70.0%	771	68.3%	157	51.5%	1,848	66.9%
Homeless	24	52.9%	11	64.6%	33	73.5%	3	35.7%	71	64.3%
504	20	49.5%	64	80.4%	59	73.2%	18	35.8%	161	68.7%
Migrant	8	47.5%	4	70.6%	0	*	21	35.6%	33	42.9%
None of the Above	320	74.3%	915	85.6%	307	79.5%	107	58.3%	1,649	80.5%

\*No data available/reported this week

*Due to staggered start dates, information represented in the table is for schools with start dates of June 8, 2020.  
This data should not be compared with week 1 through week 5.*





# Report for July 6-10, 2020 | *Program Method*

STATEWIDE	School-Based Opportunities									
For the week ending: 07/10/2020	Bridge/Transition		Non-Core		Remediation		Other		TOTAL	
By Program Method	Students	Attendance	Students	Attendance	Students	Attendance	Students	Attendance	Students	Attendance
Online	355	66.1%	785	83.8%	301	68.2%	147	69.1%	1,588	75.7%
Face to Face	244	79.6%	444	81.5%	584	82.5%	37	77.8%	1,309	81.6%
Blended Learning	168	66.5%	373	69.8%	379	60.3%	136	42.8%	1,056	62.2%
Packet	0	*	1	0.0%	0	*	0	*	1	0.0%
Other	0	*	57	72.5%	2	0.0%	3	100.0%	62	72.2%
<b>TOTAL</b>	<b>767</b>	<b>70.1%</b>	<b>1,660</b>	<b>79.6%</b>	<b>1,266</b>	<b>72.6%</b>	<b>323</b>	<b>56.9%</b>	<b>4,016</b>	<b>73.8%</b>

## Program Methods:

**Online** = Online instruction

**Face to Face** = In-person instruction

**Blended** = Combination of online and in-person instruction

**Packet** = Paper instruction

**Other** = Other instruction such as PBS

*Due to staggered start dates, information represented in the table is for schools with start dates of June 8, 2020.  
This data should not be compared with week 1 through week 5*



# State-Level Programs

- *Extended School Year (ESY)*
- *Alternative Learning Program Support & Services (ALPSS)*
- *School Feeding Program*
- *Personal Protective Equipment (PPE)*
- *YES Project*



Photo credit: Pearl City Highlands Elementary, Instagram



# Report for July 6-10, 2020 | *Extended School Year (ESY)*



Makakilo Elementary

**122**

schools **(+126% from wk#5)**

**2,265**

students  
eligible

**732**

students served **(+98% from wk#5)**

For the week ending: 07/10/2020	ESY	
By Program Method	Students	Attendance
Online	113	94.7%
Face to Face	496	95.8%
Blended Learning	105	93.3%
Packet	18	66.7%
Other		*
TOTAL	732	92.0%

\*No data to report





# Report for July 6-10, 2020 | *Alternative Learning Program Support Services*

		Week 1 (06/01-06/05)	Week 2 (06/08-06/12)	Week 3 (06/15-06/19)	Week 4 (06/22-06/26)	Week 5 (06/29-07/02)	Week 6 (07/5-07/10)
#	Student Participants	142	158	181	223	239	223*
#	Sites	10	10	8	11	10	10
#	ALPSS Teachers	15	16	16	13	16	16
#	Courses Offered	18	20	24	24	24	24

*\*Count of participants include 68 students in a direct ALPSS program and 155 students in other summer learning opportunity programs that are being tutored by ALPSS teachers.*

*\*\*Revised to reflect the count of courses (last week's report errantly reported count of subjects)*



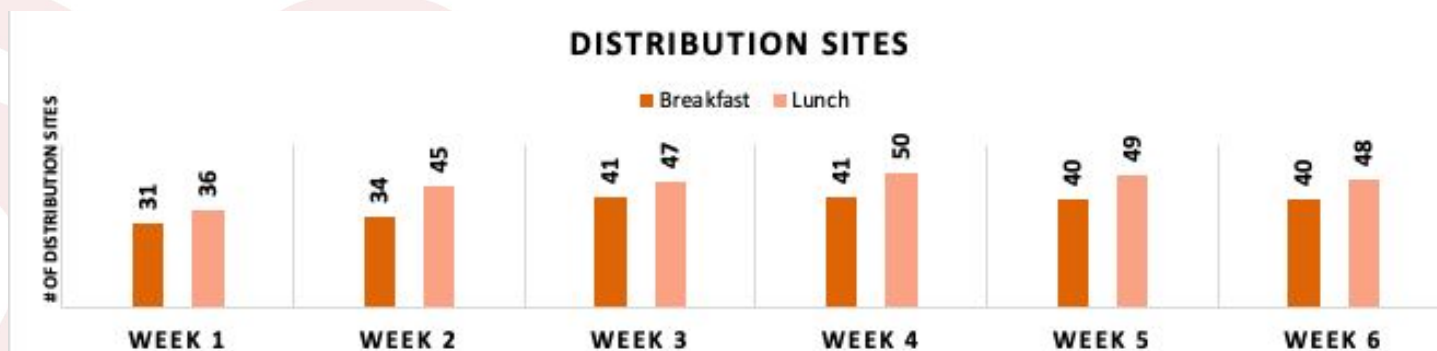
# Report for July 6-10, 2020 | *Meals*

## Statewide Distribution

(as of 7/7/2020)

*\*School self-reported counts*

	Week 1 (06/01-06/05)	Week 2 (06/08-06/12)	Week 3 (06/15-06/19)	Week 4 (06/22 - 06/26)	Week 5 (06/29-07/02)	Week 6 (07/06-07/10)
<b>Breakfast*</b>	12,439	8,965	16,556	16,552	12,307	13,986
<b>Lunch*</b>	30,565	23,943	38,633	40,141	28,082	32,638
<b>TOTAL</b>	43,004	32,908	55,189	56,693	40,389	46,624



*This is point in time data as of July 14, 2020, which is updated weekly.*



# Report for July 6-10, 2020 | *The YES Project*

## WEEK ENDING 07/10/2020

# OF STUDENTS REACHED	258
# OF COMMUNITY SITES VISITED	12 (Barbers Point Elementary met at a community site for onsite registration day)
SOURCE OF REFERRAL	Community Homeless Liaisons and School Admin Team
WHAT WAS DELIVERED	Summer Art enrichment, books, art supplies, non-perishable food, telehealth forms, McKinney-Vento forms, hygiene supplies, Residential Youth Services & Empowerment (RYSE) outreach program information, Education for Homeless Children & Youth (EHCY) program information, liaison contact information, activity books, and snacks
AGENCY CONNECTIONS MADE	RYSE Outreach team, Department of Health (DOH) Public Health, Waipahu Safe Haven, and Institute for Human Services-Kahauiki Village (IHS-KV) Shelter Staff
ONLINE ACCESSIBILITY	65 students/parents said they have access via laptop WiFi to their student account/school. 23 students/parents said that they do not have access. Overall, most students have access to a device but need access to consistent WiFi connections.

The pilot YES mobile hub project is a collaborative outreach initiative designed to deliver supports to children in unstable housing.

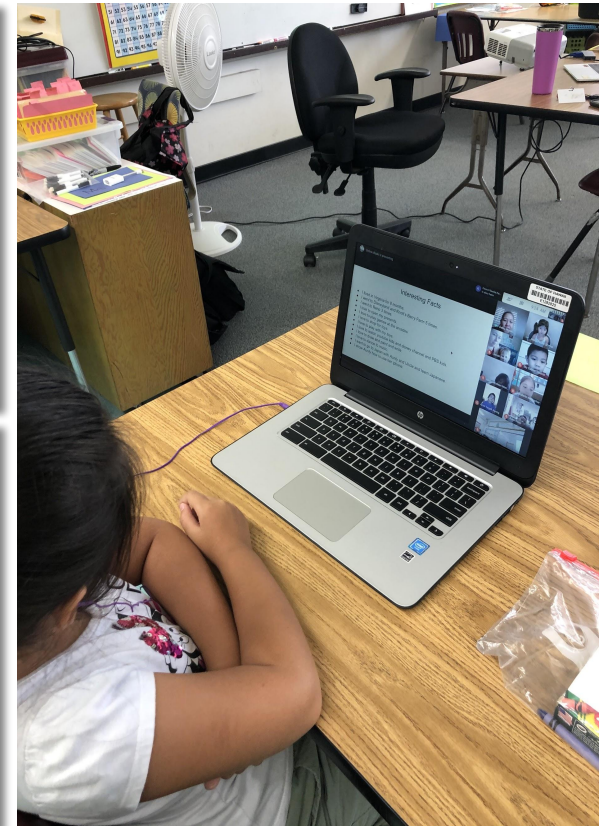
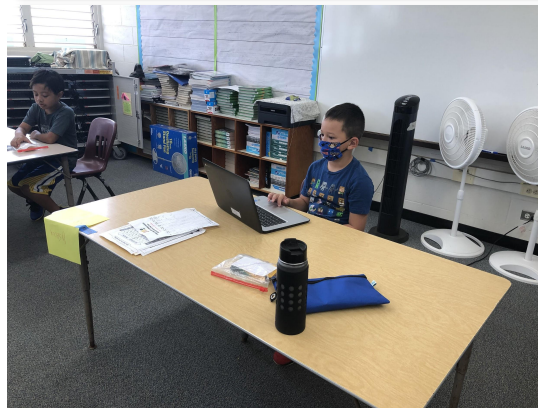
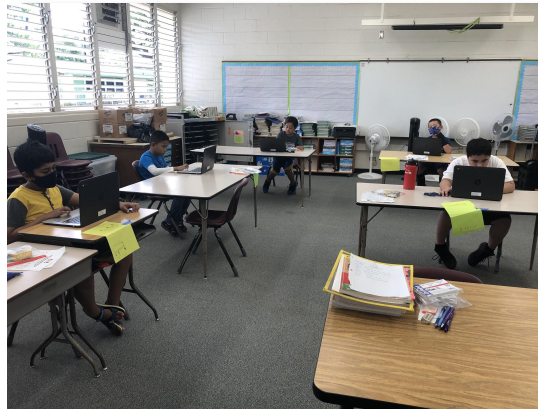




# Report for July 6-10, 2020 | *Highlight for the Week*

At Kuhio Elementary, students were able to connect at the same time through a face-to-face and online format. While some students were in the physical classroom, other students were able to participate virtually with their teacher and peers. Students were highly engaged, and enjoyed collaboratively working and connecting with their classmates.

Principal Kobayashi reported that through the summer learning program, the school was able to reach students who needed additional support during the fourth quarter of the 2019-20 school year.



*Photo credit: Kuhio Elementary*





# Looking Ahead | *Summary*

- July 10 marked the completion of 10 additional official summer school programs (final two schools, Moanalua High School and eSchool, will complete on July 17) and we anticipate a significant reduction in the number of school-based opportunities and students served in the last weekly report.
- The Grab-and-Go school meals program will be concluding on Friday, July 17.
- The Summer Learning 2020 program has provided multiple schools, teachers, staff, students and parents the opportunity to practice social distancing, the use of masks, and online technology while learning.