



# 2020 Summer Learning

## Hawai'i State Department of Education

**Dr. Christina M. Kishimoto**  
*Superintendent*

**Weekly Report**  
**July 13-17, 2020**

Submitted to the Hawaii State Board of Education on July 24 2020





# HIDOE Phases of Design and Delivery

## *Continuity of Learning through COVID-19*

### Phase 1

Continuity of School  
Year 2019-20 & Initiating  
Department Support  
Services

### Phase 2

**Summer Learning &  
Transition Planning**

### Phase 3

Planning for Reopening:  
School Year 2020-21

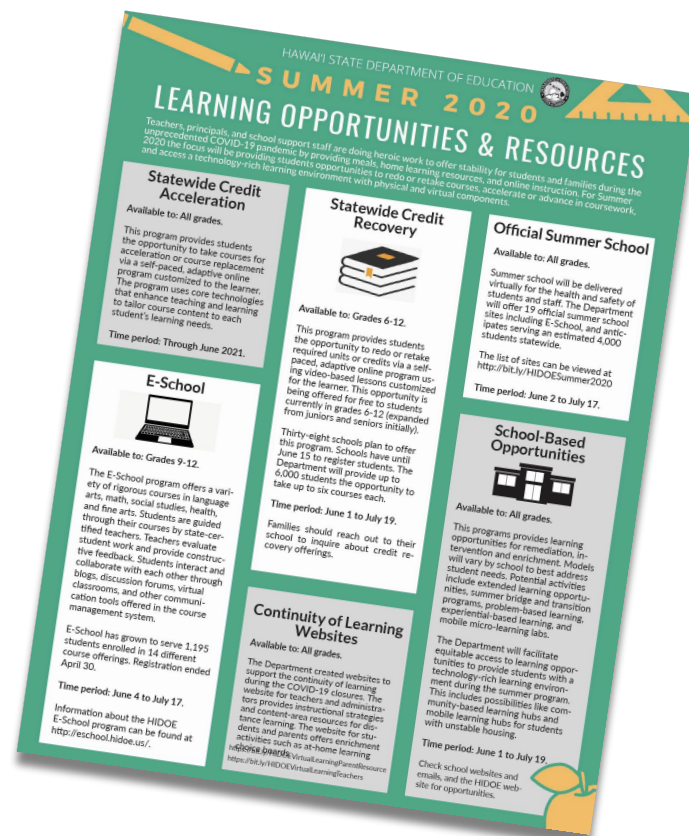
We designed an expanded summer learning approach that focuses on addressing student learning needs as well as service, design and innovation. Due to the extensive closure of school buildings, which totaled 46 days for SY 19-20, the Department is maximizing summer learning opportunities in order to re-engage students and ensure they are ready to transition. Between June 1-July 17, schools will continue to implement programming to support the unique needs of their students.



# HIDOE Phase 2

## Summer Learning & Transition Planning

- Provides special education and related services to students through Extended School Year (ESY) programs.
- Expands online distance learning instructional delivery for safety and alternative scheduling for summer school.
- Offers statewide credit recovery opportunities targeting students who did not meet proficiency, at no cost to students grades 6-12 (expanded from juniors and seniors initially).
- Launch school-based summer learning opportunities, including extended learning, kinder boosts, targeted enrichment, mobile learning hubs, outreach and community-based learning hubs.





# Report for July 13-17

Summer Learning 2020  
Overview

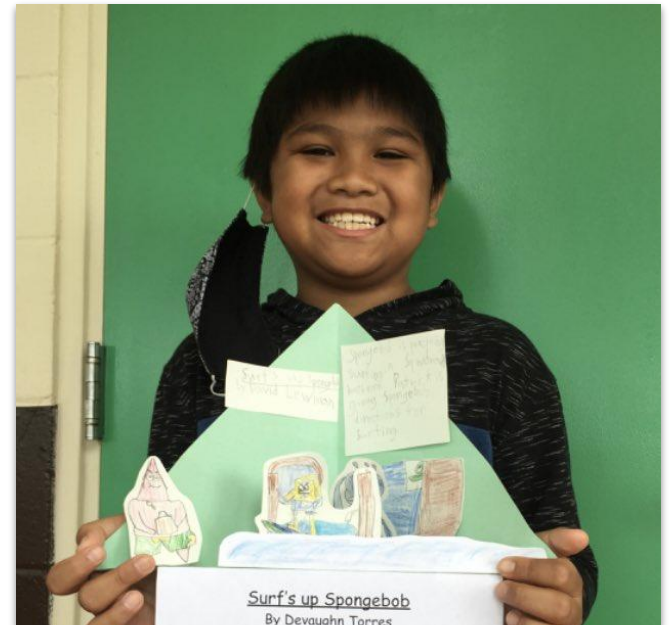
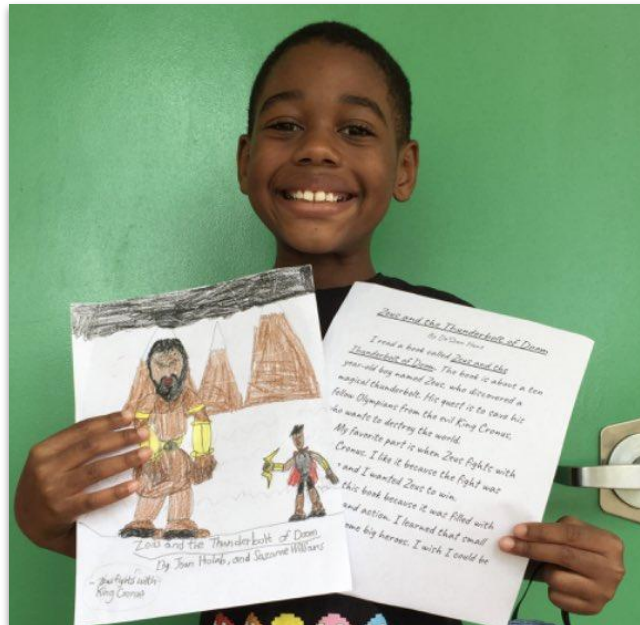


Photo credit: Wheeler Elementary, Twitter





# What's included this week. . .

Report reflects data collected from active statewide summer learning opportunities offered during the week of July 13-17.

**Total Summer Learning Opportunity Programs: 7\***

**As of  
7/17/2020**

**Official Summer Schools**

**1**

**Credit Recovery Schools**

**41**

**E-School Official Summer School**

**1**

**School-Based Opportunities**

**37**

**State Level Programs**

**ALPSS**

**4**

**YES Project**

**5**

**ESY Sites**

**103**

**Total Summer Learning Opportunities Offered**

**192**

**(-23.2% from Wk#6)**

\*No PPEs were distributed in Week #7



# Report for July 13-17, 2020 | *Data Collection Process and Overview*



## Reporting

As summer school opportunities come to an end, the Grab & Go meal service for students also concluded its program on Friday, July 17. After over 17 weeks of operation, the program provided over 1.3 million school meals for breakfast and lunch to children ages 18 or younger at nearly 80 public schools and community locations.



## Student Participants

This week, we served 5,450 students (in Official Summer School, Credit Recovery, e-School, Summer-Based Opportunities, ESY, ALPSS, and The Yes project programs); a decrease of -5,144 students from week 6. Most of the decrease (4,952 or 96%) was due to the ending of Official Summer School, Credit Recovery, and Summer-Based Opportunities programs in the prior week.



## Unique Data Sets

The data sets contained in this report cannot be compared from week to week. These data sets highlight varying groups of students, types of courses and programs that reflect the uniqueness of the schools and its students.



# Overview of 2020 Summer Programs

17+1

## Official Summer School Sites

Offered at 17 schools where instruction will be delivered virtually.

**E-School** is an official summer school online education option offered to students in grades 9-12.

- 17 Official Summer School
- E-School - also considered an official summer school

219

## School-Based Opportunities

Will vary both in design and delivery depending on the school and the program.

- Examples include:
- Learning Hubs
  - Transitions
  - Mobile Hubs

193

## Extended School Year (ESY)

Available at 193 schools for eligible students with disabilities

- Determined by students' Individualized Educational Program (IEP)

To see which schools are offering these programs, please visit the **Summer 2020 Learning Opportunities Dashboard** at <https://tabsoft.co/3f3aCsP>.



# Summer Programs

- *Official Summer School*
- *E-School*
- *Credit Recovery*

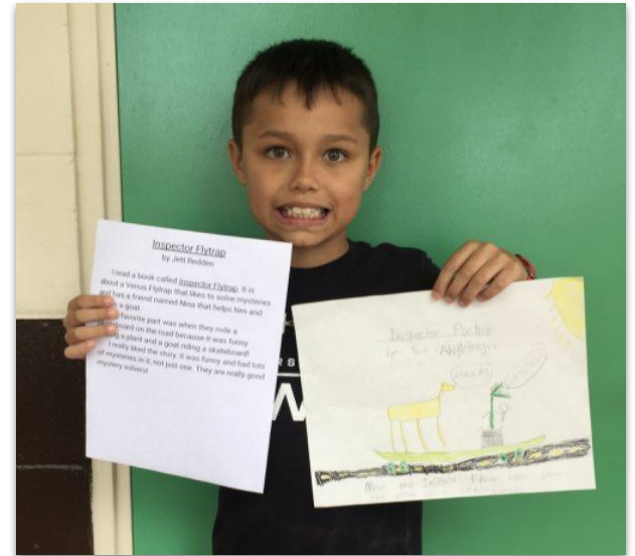


Photo credit: Wheeler Elementary, Twitter





# Report for July 13-17, 2020 | *Official Summer School*

## List of Summer School Sites

### KAUAI

Kapa'a High\*

### OAHU

Aina Haina Elementary\*

Campbell High\*

Highlands Inter\*

Kaimuki High\*

Kalani High\*

Kawananakoa Middle\*

Kula Kaiapuni O Anuenue\*

Leilehua High\*

Mililani High\*

Moanalua High\*

Moanalua Middle\*

Pauoa Elementary\*

Pearl City High\*

Radford High\*

### MAUI

Baldwin High\*

### HAWAII

Waiakea High\*

*E-School is an official summer school online education option offered to students in grades 9-12.*

*\*All 17 Summer Schools have ended as of July 17, 2020; data for Moanalua High School not available*



# Report for July 13-17, 2020 | *E-School Summer School*

**668 students  
enrolled by  
subgroups and  
courses**

STATEWIDE	E-School Summer School					
For the week ending: 07/17/2020	Course Enrollment					
By Student Demographics**	English Language Arts	Mathematics	Social Studies	Science	Other	Total Courses Enrolled
SPED	*	*	13	*	3	16
English Learners	2	5	5	*	2	14
Low SES	7	30	96	*	35	168
Homeless	*	1	2	*	*	3
504	4	2	11	*	10	27
Migrant	*	*	7	*	*	7
None of the Above	60	88	458	*	158	764

\* No data available/reported this week

\*\*Students may be in one or more demographic category and be enrolled in more than one course



# Report for July 13-17, 2020 | *Credit Recovery (as of 07/xx/2020)*

STATEWIDE	Credit Recovery*
Disproportionately Impacted Students	Students
Junior/Senior	0
Transition	0
Failing grade (F's or DP/WB)	65
Chronic Absentee	0
9th Gr. Off-track	0
504/Behavior Concerns	0
EL: ELP 1&2	0
Students who fall in multiple categories	214
Not Disproportionately Impacted	1,958
TOTAL	2,036

\*Based on schools that identify the Disproportionately Impacted Students; no attendance data available

**41**  
schools

**2,036**  
active  
participation

**11**  
content  
courses

STATEWIDE	Credit Recovery*
For the week ending: 07/17/2020	
Student Demographics**	Students
SPED	286
English Learners	209
Low SES	1,202
Homeless	71
504	141
Migrant	20
None of the Above	592

\*No attendance data available

\*\*Students may be in one or more demographic category



# School Based Opportunities

- *Disproportionately Impacted*
- *Demographic Subgroups*
- *Program Method*



Photo credit: Wheeler Elementary, Twitter





# Report for July 13-17, 2020 | *School-Based Opportunities*

School-based opportunities vary both in design and delivery depending on the school and the needs of its students. During this week, 73.4% (+12.4% from week #6) of students were enrolled and were served through a school learning hub and 26.6% were served in a non-core, transition or mobile hub program. As schools begin wrapping up this year's summer learning programs, there were 26 less schools and 2,210 (-55.0% from week #6) less students participating in school-based learning opportunities this week.

**37**  
schools

**1,806**  
students enrolled

**78.3%**  
disproportionately impacted  
students served



Photo credit: Ilima Intermediate, Twitter



# Report for July 13-17, 2020 | *Disproportionately Impacted Students*

STATEWIDE	School-Based Opportunities									
For the week ending : 07/17/2020	Bridge/Transition		Non-Core		Remediation		Other		TOTAL	
Disproportionately Impacted Students	Students	Attendance	Students	Attendance	Students	Attendance	Students	Attendance	Students	Attendance
Junior/Senior	1	100.0%	0	*	0	*	2	100.0%	3	100.0%
Transition	313	56.8%	6	23.3%	0	*	69	94.5%	388	58.8%
Failing grade (F's or DP/WB)	28	97.9%	118	63.9%	325	77.0%	45	72.1%	516	74.3%
Chronic Absentee	0	*	0	*	0	*	0	*	0	*
9th Gr. Off-track	0	*	0	*	0	*	0	*	0	*
Not meeting 3rd Grade Literacy	53	78.1%	4	50.0%	0	*	0	*	57	76.7%
504/Behavior Concerns	0	*	2	30.0%	2	100.0%	0	*	4	65.0%
EL: ELP 1 & 2	25	69.3%	11	52.4%	33	64.2%	2	75.0%	71	65.6%
Students who fall in multiple categories	21	56.8%	124	74.6%	203	48.6%	28	67.9%	376	58.2%
Not Disproportionately Impacted	35	86.3%	323	67.6%	3	55.6%	30	70.3%	391	70.0%
<b>TOTAL</b>	<b>476</b>	<b>65.1%</b>	<b>588</b>	<b>67.4%</b>	<b>566</b>	<b>63.4%</b>	<b>176</b>	<b>76.5%</b>	<b>1,806</b>	<b>66.1%</b>

\*No data available/reported this week



# Report for July 13-17, 2020 | *Demographic Subgroups*

STATEWIDE	School-Based Opportunities									
For the week ending : 07/17/2020	Bridge/Transition		Non-Core		Remediation		Other		TOTAL	
By Student Demographics	Students	Attendance	Students	Attendance	Students	Attendance	Students	Attendance	Students	Attendance
SPED	47	79.0%	73	70.4%	103	60.2%	36	79.9%	259	69.4%
English Learners	82	69.9%	29	80.0%	126	77.0%	48	66.7%	285	73.4%
Low SES	204	59.2%	273	64.3%	388	59.1%	73	74.3%	938	61.8%
Homeless	8	78.9%	1	0.0%	11	36.8%	1	100.0%	21	53.3%
504	19	50.5%	26	73.0%	23	48.5%	2	30.0%	70	57.1%
Migrant	8	37.5%	3	62.5%	0	*	7	70.0%	18	46.6%
None of the Above	217	67.3%	254	69.3%	109	76.7%	72	90.2%	652	70.5%

\*No data available/reported this week

*Due to staggered start dates, information represented in the table is for schools with start dates of June 8, 2020.  
This data should not be compared with week 1 through week 6.*



# Report for July 13-17, 2020 | *Program Method*

STATEWIDE	School-Based Opportunities									
	Bridge/Transition		Non-Core		Remediation		Other		TOTAL	
For the week ending: 07/17/2020										
By Program Method	Students	Attendance	Students	Attendance	Students	Attendance	Students	Attendance	Students	Attendance
Online	185	50.4%	70	41.5%	59	65.0%	50	82.5%	364	55.4%
Face to Face	136	79.7%	190	86.9%	156	84.3%	88	87.5%	570	83.7%
Blended Learning	155	67.7%	328	66.6%	351	50.6%	38	59.0%	872	61.3%
Packet	0	*	0	*	0	*	0	*	0	*
Other	0	*	0	*	0	*	0	*	0	*
<b>TOTAL</b>	<b>476</b>	<b>65.1%</b>	<b>588</b>	<b>67.4%</b>	<b>566</b>	<b>63.4%</b>	<b>176</b>	<b>76.5%</b>	<b>1,806</b>	<b>66.1%</b>

\*No data available/reported this week

## Program Methods:

**Online** = Online instruction

**Face to Face** = In-person instruction

**Blended** = Combination of online and in-person instruction

**Packet** = Paper instruction

**Other** = Other instruction such as PBS

*Due to staggered start dates, information represented in the table is for schools with start dates of June 8, 2020  
This data should not be compared with week 1 through week 6*





# State-Level Programs

- *Extended School Year (ESY)*
- *Alternative Learning Program Support & Services (ALPSS)*
- *School Feeding Program*
- *Personal Protective Equipment (PPE)*
- *YES Project*



*Photo credit: Hawaii State Department of Education*



# Report for July 13-17, 2020 | *Extended School Year (ESY)*



Roosevelt High School

**103**

schools **(-15.6% from wk#6)**

**2,265**

students eligible

**613**

students served **(-12% from wk#6)**

For the week ending: 07/17/2020	ESY	
By Program Method	Students	Attendance
Online	77	82.8%
Face to Face	444	85.6%
Blended Learning	91	91.1%
Packet	15	76.7%
Other	0	*
TOTAL	627	85.9%

\*No data to report



# Report for July 13-17, 2020 | *Alternative Learning Program Support Services*

		<b>Week 1</b> (06/01-06/05)	<b>Week 2</b> (06/08-06/12)	<b>Week 3</b> (06/15-06/19)	<b>Week 4</b> (06/22-06/26)	<b>Week 5</b> (06/29-07/02)	<b>Week 6</b> (07/5-07/10)	<b>Week 7</b> (07/13-07/17)
#	Student Participants	<b>142</b>	<b>158</b>	<b>181</b>	<b>223</b>	<b>239</b>	<b>223</b>	<b>148*</b>
#	Sites	<b>10</b>	<b>10</b>	<b>8</b>	<b>11</b>	<b>10</b>	<b>10</b>	<b>4**</b>
#	ALPSS Teachers	<b>15</b>	<b>16</b>	<b>16</b>	<b>13</b>	<b>16</b>	<b>16</b>	<b>8</b>
#	Courses Offered	<b>18</b>	<b>20</b>	<b>24</b>	<b>24</b>	<b>24</b>	<b>24</b>	<b>24</b>

*\*Count of participants include 39 students in a direct ALPSS program and 109 students enrolled in other summer learning opportunity programs who are also tutored by ALPSS teachers*

*\*\*Six programs ended on July 10, 2020 (Kalani, Honokaa, Kaiser, Ka'u, Kealahou, Maui High)*





# Report for July 13-17, 2020 | *Meals*

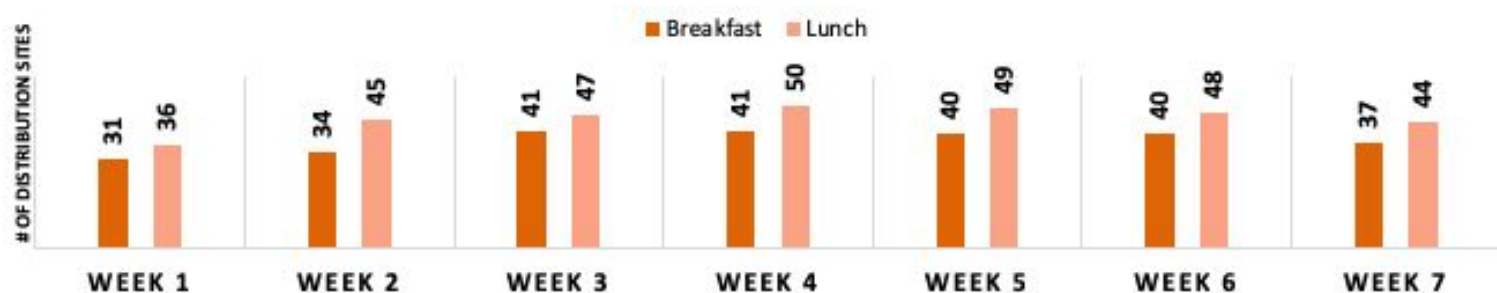
## Statewide Distribution

(as of 7/21/2020)

*\*School self-reported counts*

	<b>Week 1</b> (6/01-6/05)	<b>Week 2</b> (6/08-6/12)	<b>Week 3</b> (6/15-6/19)	<b>Week 4</b> (6/22-6/26)	<b>Week 5</b> (6/29-7/02)	<b>Week 6</b> (7/06-7/10)	<b>Week 7</b> (7/13-7/17)
<b>Breakfast*</b>	12,439	8,965	16,556	16,552	12,307	13,986	7,862
<b>Lunch*</b>	30,565	23,943	38,633	40,141	28,082	32,638	18,627
<b>TOTAL</b>	43,004	32,908	55,189	56,693	40,389	46,624	26,489

## DISTRIBUTION SITES



This is point in time data as of July 21, 2020, which is updated weekly





# Report for July 13-17, 2020 | *The YES Project*

## WEEK ENDING 07/17/2020

# OF STUDENTS REACHED	179
# OF SCHOOLS/ COMMUNITY SITES VISITED	1 / 4
SOURCE OF REFERRAL	Liaisons, shelter staff, Waipahu Safe Haven, school administration staff
WHAT WAS DELIVERED	Face masks, art supplies, library books, school supplies, hygiene supplies, McKinney Vento enrollment forms, DOE telehealth forms, activity books, snacks, liaison contact information, and non-perishable food
AGENCY CONNECTIONS MADE	Department of Health (DOH) Health Workers, Department of Education (DOE) Grab-n-Go, Safe Haven
ONLINE ACCESSIBILITY	Less than ten students indicated that they had access to either a cell phone with a data plan or a WiFi. Most of the students reported that they did not have access to a device, or multiple devices for households with 2-3 students.

The pilot YES mobile hub project is a collaborative outreach initiative designed to deliver supports to children in unstable housing.





# Report for July 13-17, 2020 | *Highlight for the Week*

- This summer, five of the **Kau Keaau Pahoa (KKP)** schools offered learning opportunities for English Learners (ELs):
  - Kau High & Pahala Elementary (face-to-face)
  - Keaau Elementary (virtual)
  - Keaau Middle (virtual)
  - Keaau High (combination face-to-face and virtual)
  - Pahoa Elementary (face-to-face)
- Served 61 priority students (who had lower English Language (EL) proficiency levels and/or long-term ELs).
- Resource teachers created a daily EL development routine for grades K-2, 3-5, and 6-12 for students to practice the four language domains of listening, speaking, reading and writing.
- The routines were used as curriculum for the Summer Hub for ELs at each of the five participating schools. Routines were designed so students could continue to practice the skills on their own and with their families once the summer program ended.
- Pahoa Elementary had three newcomer ELs participating in the program, and were happy to receive the assistance from a teacher at Keonepoko Elem, who was able to provide the students with first language support for the summer.

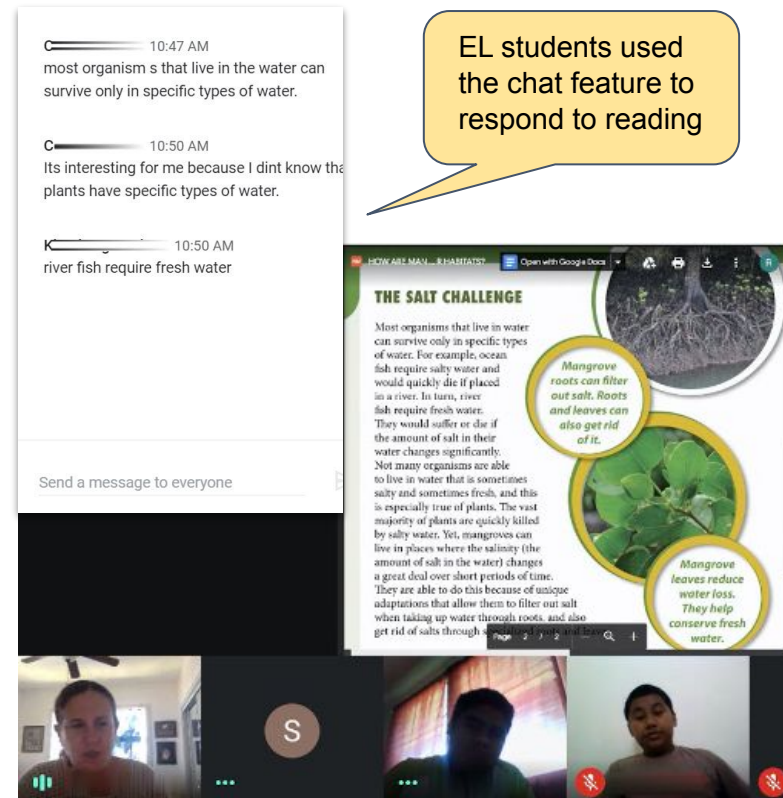


Photo credit: Kau Keaau Pahoa Complex Area



# Looking Ahead | *Summary*

- As of July 17, all Official Summer School programs have ended.
- The last weekly report, scheduled for July 31, will include only the summer learning opportunities active through July 24.
- The final report, scheduled for August 28, will include a summary of all summer learning opportunities. In addition to the regularly weekly report data, the final report will include information about: Hawaii Keiki, English Learner, Summer Internship, UH Summer Next Steps, and other personnel, facility, technology, and fiscal outcomes.