

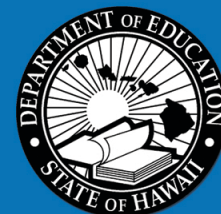


2014

SUPERINTENDENT'S Annual Report



Office of the Superintendent | 25th Annual Report | June 2015





The Honorable David Y. Ige Governor, State of Hawaii

BOARD OF EDUCATION

Donald G. Horner, Chairperson
Brian J. De Lima, Esq., Vice Chairperson

Amy Asselbaye	Hubert Minn
Grant Y.M. Chun	Lance Mizumoto
Margaret Cox	Col. James Pease (Military Liaison)
Patricia Halagao	Jim Williams
Wesley P. Lo	

DEPARTMENT OF EDUCATION

Kathryn S. Matayoshi, Superintendent of Education
Stephen Schatz, Deputy Superintendent

Donna Lum Kagawa
Farrington-Kaiser-Kalani Complex Area Superintendent

Ruth Silberstein
Kaimuki-McKinley-Roosevelt Complex Area Superintendent

John Erikson
Aiea-Moanalua-Radford Complex Area Superintendent

John Brummel, Ph.D.
Leilehua-Mililani-Waialua Complex Area Superintendent

Heidi W. Armstrong
Campbell-Kapolei Complex Area Superintendent

Ann A. Mahi
Nanakuli-Waianae Complex Area Superintendent

Rodney T.O. Luke
Pearl City-Waipahu Complex Area Superintendent

Matthew C.W. Ho
Castle-Kahuku Complex Area Superintendent

Suzanne Mulcahy
Kailua-Kalaheo Complex Area Superintendent

Brad Bennett
Hilo-Waiakea Complex Area Superintendent

Chad Keone Farias
Kau-Keaau-Pahoa Complex Area Superintendent

Arthur Souza
Honokaa-Kealahou-Kohala-Konawaena Complex Area Superintendent

Alvin Shima
Baldwin-Kekaulike-Maui Complex Area Superintendent

Lindsay Ball
Hana-Lahainaluna-Lanai-Molokai Complex Area Superintendent

William N. Arakaki
Kapaa-Kauai-Waimea Complex Area Superintendent

Suzanne Mulcahy, Assistant Superintendent
Office of Curriculum, Instruction and Student Support

Clyde Sonobe, Assistant Superintendent & Chief Information Officer
Office of Information Technology Services

Amy Kunz, Senior Assistant Superintendent & Chief Financial Officer
Office of Fiscal Services

Dann S. Carlson, Assistant Superintendent
Office of School Facilities and Support Services

Barbara Krieg, Assistant Superintendent
Office of Human Resources

Tammi Oyadamori-Chun, Assistant Superintendent
Office of Strategy, Innovation and Performance

Contents

At-A-Glance	1
Table 1. Official Fall Enrollment for Grades K to 12, Public and Private Schools	1
Table 2. Hawaii State School Readiness Assessment.....	1
Figure 1. Percent of Students with Special Needs, Unduplicated Count.....	1
Table 3. Teacher Credentials	2
Table 4. Funding by Source and Year (in millions).....	2
Table 5. Safety and Well-Being of Students	2
Table 6. Hawaii State Assessment, 2012-2014 (Grades 3 to 8, and 10)	2
Table 7. Two-Year Trend in Reading and Math by Grade and Proficiency Levels	3
Figure 2. Percent Proficient, 2007-2014 ESEA* Reading, State Summary.....	4
Figure 3. Percent Proficient, 2007-2014 ESEA* Mathematics, State Summary	4
Figure 4. Percent Proficient, 2013-2014 ESEA* Science, State Summary	4
Table 8. Four-Year Graduation & Dropout Rates.....	5
Table 9. High School Diplomas	5
Table 10. Advanced Placement (AP) Program.....	5
Profiles and Trends	6
Table 11. Number of Public Schools (and percentage of total)	6
Table 12. Student Enrollment.....	6
Table 13. Progress and Completion.....	6
Table 14. Staff, Full-Time Equivalent Positions.....	7
Table 15. State Demographics.....	7
School Finance	8
Table 16. State School Budget.....	8
Table 17. Key Finance Indicators	8

Figure 5. Percentage of State & Local Expenditures per Capita Supporting Public Schools.....	9
Educational Assessments	9
Table 18. National Assessment of Educational Progress (NAEP)	9
Table 19. Hawaii State Assessment, Percent Meets and Exceeds Proficiency	10
Figure 6. Performance Index and Classification Summary for SY 2013-14.....	11
Table 20. Students by Complex in SY 2013-14.....	12
Table 21. Teachers by Complex in SY 2013-14.....	13
Table 22. SY 2013-14 Wellness Indicators by Complex (results for participating schools).....	14
Table 23. Percent Meets and Exceeds Proficiency on HSA Reading by Grade and Complex for SY 2013-14	15
Table 24. Percent Meets and Exceeds Proficiency on HSA Mathematics by Grade and Complex for SY 2013-14	16
Table 25. Percent Meets and Exceeds Proficiency on HSA Science by Grade and Complex for SY 2013-14	17
Appendices	18
Appendix A. Glossary	18
Appendix B. References and Resources	22
Appendix C. Data Tables	25

At-A-Glance

Table 1. Official Fall Enrollment for Grades K to 12, Public and Private Schools

	2011-12	2012-13	2013-14
Public schools	181,213	183,251	185,273
<i>% of total enrollment</i>	<i>84.2%</i>	<i>84.5%</i>	<i>84.8%</i>
Department schools	172,104	173,658	175,476
[% of public schools enrollment]	[95.0%]	[94.8%]	[94.7%]
Charter schools	9,109	9,593	9,797
[% of public schools enrollment]	[5.0%]	[5.2%]	[5.3%]
Private Schools	34,132	33,610	33,109
<i>% of total enrollment</i>	<i>15.8%</i>	<i>15.5%</i>	<i>15.2%</i>
Total	215,345	216,861	218,382

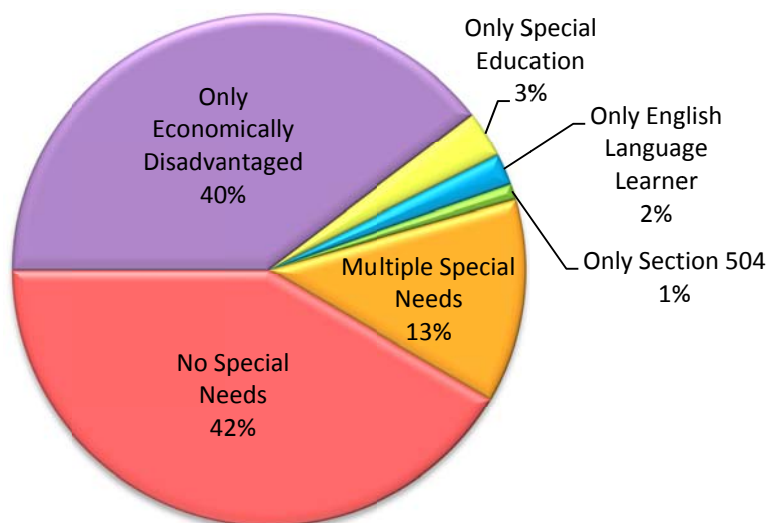
Sources: Hawaii State Department of Education: Office of Strategy, Innovation and Performance: Assessment and Accountability Branch: Accountability Section; Hawaii Association of Independent Schools.

Table 2. Hawaii State School Readiness Assessment

	2011-12	2012-13	2013-14
Kindergarteners who attended preschool	58%	57%	57%
Kindergarten teachers with Early Childhood Endorsement Certificates	20%	20%	18%

Source: Hawaii State Department of Education: Office of Strategy, Innovation and Performance: Assessment and Accountability Branch: Accountability Section.

Figure 1. Percent of Students with Special Needs, Unduplicated Count



Note: Total may not be exactly 100% due to rounding.

Source: Hawaii State Department of Education: Office of Strategy, Innovation and Performance: Assessment and Accountability Branch: Accountability Section.

Table 3. Teacher Credentials

	2011-12	2012-13	2013-14
Fully Licensed	97%	97%	97%
Advanced Degree	35%	35%	36%
5+ Yrs at the Same School	62%	62%	60%
<i>Note: These figures are based on headcount and do not include teachers at charter schools.</i>			

Source: Hawaii State Department of Education: Office of Human Resources.

Table 4. Funding by Source and Year (in millions)

	2011-12	2012-13	2013-14
Appropriated Funds	\$2468	\$2,524	\$2,641
State			
General	\$2,036	\$2,110	\$2,263
Special	\$88	\$97	\$95
Trust	\$33	\$33	\$24
Federal	\$311	\$284	\$259

Source: Hawaii State Department of Education: Office of Fiscal Services.

Table 5. Safety and Well-Being of Students

	2011-12	2012-13	2013-14
Students Not Suspended*	95%	96%	96%
Positive Perceptions of Safety & Well-Being**			
Students			
Elementary	94%	84%	82%
Middle	89%	81%	71%
High	88%	75%	70%
Teachers	94%	93%	85%
* Does not include charter schools			
** Positive perceptions, as measured by the School Quality Survey, include "Strongly Agree" and "Agree."			

Source: Hawaii State Department of Education: Office of Strategy, Innovation and Performance: Assessment and Accountability Branch: Accountability Section.

Table 6. Hawaii State Assessment, 2012-2014 (Grades 3 to 8, and 10)

	2011-12	2012-13	2013-14
<i>Percent Meets or Exceeds Proficiency</i>			
Reading*	71%	72%	69%
Mathematics*	59%	59%	58%
Science**	na	34%	40%
* For SY 2011-12 and SY 2012-13, the Hawaii State Assessment (HSA) was administered for Reading and Math. In SY 2013-14, the Hawai'i State Reading and Mathematics Bridge Assessments were administered.			
** In SY 2011-12, the HSA Science was administered to grades 4, 8, and 10. For SY 2012-13 and SY 2013-14, science proficiency was measured by the HSA Science for grades 4 and 8 and the Biology I End-of-Course Exam and the Hawaii State Alternate Assessment (HSA-Alt) for high school.			

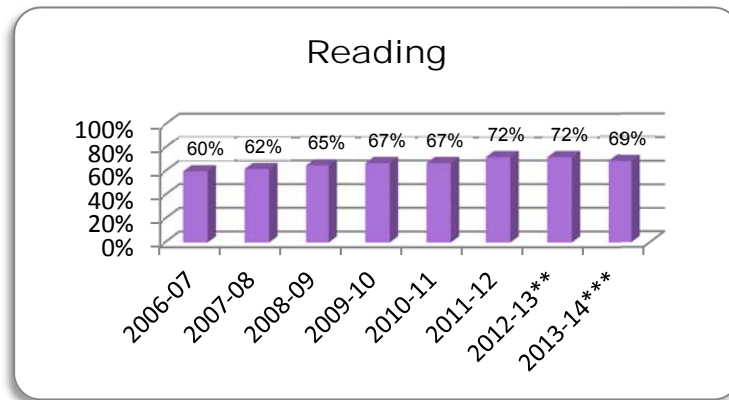
Source: Hawaii State Department of Education: Office of Strategy, Innovation and Performance: Assessment and Accountability Branch: Assessment Section.

Table 7. Two-Year Trend in Reading and Math by Grade and Proficiency Levels

Reading %								
Grade	2012-13				2013-14*			
	Well-Below	Approaches	Meets	Exceeds	Well-Below	Approaches	Meets	Exceeds
3	7%	22%	29%	42%	10%	25%	25%	40%
4	9%	18%	30%	43%	9%	20%	30%	40%
5	7%	20%	37%	36%	9%	22%	34%	35%
6	7%	19%	41%	33%	8%	22%	41%	29%
7	7%	22%	48%	24%	8%	22%	45%	25%
8	9%	18%	40%	33%	9%	20%	38%	33%
10	11%	19%	53%	17%	13%	20%	50%	18%
Math %								
Grade	2012-13				2013-14*			
	Well-Below	Approaches	Meets	Exceeds	Well-Below	Approaches	Meets	Exceeds
3	10%	23%	49%	18%	14%	22%	40%	23%
4	10%	25%	48%	17%	12%	25%	41%	24%
5	12%	27%	44%	17%	13%	22%	40%	25%
6	14%	26%	42%	17%	19%	25%	33%	22%
7	17%	28%	39%	17%	18%	27%	34%	21%
8	17%	24%	44%	15%	17%	23%	39%	20%
10	28%	27%	34%	12%	28%	29%	31%	12%
Science %								
Grade	2012-13				2013-14			
	Well-Below	Approaches	Meets	Exceeds	Well-Below	Approaches	Meets	Exceeds
4	9%	46%	36%	9%	7%	40%	42%	11%
8	28%	42%	24%	5%	22%	43%	28%	7%
HS**	31%	45%	19%	5%	28%	42%	25%	5%
<p><i>Note: Total may not be exactly 100% due to rounding. Proficiency rates are based on students enrolled on the Participation Rate Count date.</i></p> <p>* Hawai'i State Reading and Mathematics Bridge Assessments</p> <p>** HS (High School) Science proficiency includes results of the Biology I End of Course exam and HSA-Alt</p>								

Source: Hawaii State Department of Education: Office of Strategy, Innovation and Performance: Assessment and Accountability Branch: Assessment Section.

Figure 2. Percent Proficient, 2007-2014 ESEA* Reading, State Summary



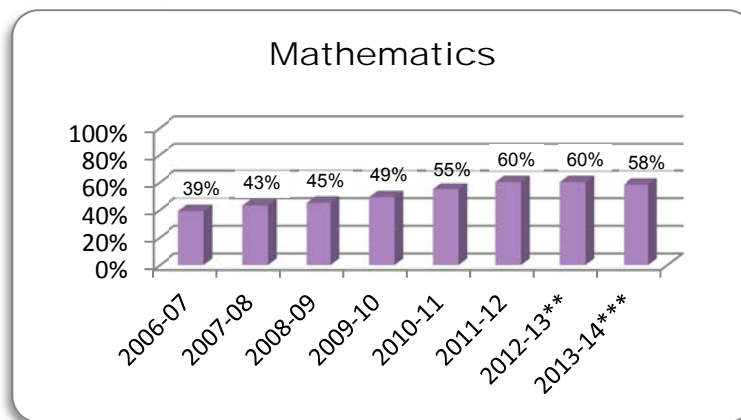
* Currently known as Strive HI Performance System; prior to 2013, NCLB/AYP

** Prior to 2013, percent proficient was based on Full Academic Year which overlapped two school years. Beginning 2013, proficiency is based on students enrolled for Full School Year.

*** Hawaii State Reading Bridge Assessment

Source: Hawaii State Department of Education: Office of Strategy, Innovation and Performance: Assessment and Accountability Branch: Assessment Section.

Figure 3. Percent Proficient, 2007-2014 ESEA* Mathematics, State Summary



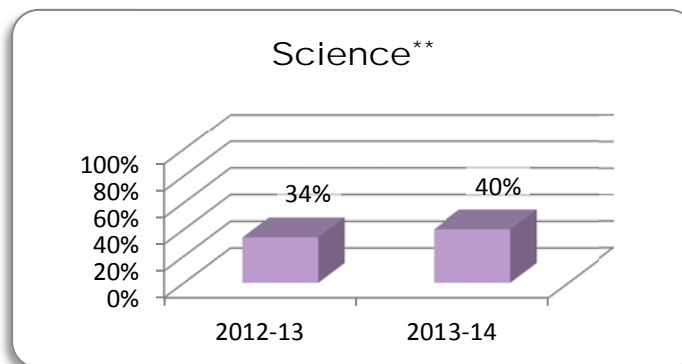
* Currently known as Strive HI Performance System; prior to 2013, NCLB/AYP

** Prior to 2013, percent proficient was based on Full Academic Year which overlapped two school years. Beginning 2013, proficiency is based on students enrolled for Full School Year.

*** Hawaii State Mathematics Bridge Assessment

Source: Hawaii State Department of Education: Office of Strategy, Innovation and Performance: Assessment and Accountability Branch: Assessment Section.

Figure 4. Percent Proficient, 2013-2014 ESEA* Science, State Summary



* Currently known as Strive HI Performance System. Proficiency is based on students enrolled for the Full School Year.

** The percent proficient is based on the results of the HSA Science administered to grades 4 and 8 and the Biology I EOC exam and HSA-Alt for students in high school.

Source: Hawaii State Department of Education: Office of Strategy, Innovation and Performance: Assessment and Accountability Branch: Assessment Section.

Table 8. Four-Year Graduation & Dropout Rates

	2011-12	2012-13	2013-14
Graduation	82.2%	82.4%	81.7%
Dropouts	15.8%	14.6%	14.8%

Note: Percentages based on preliminary Adjusted Cohort Graduation Rate data.

Source: Hawaii State Department of Education: Office of Strategy, Innovation and Performance: Assessment and Accountability Branch: Accountability Section.

Table 9. High School Diplomas

	2011-12	2012-13	2013-14
BOE Diploma	18.8%	15.4%	15.4%
Regular Diploma	75.7%	80.4%	80.6%

Note: Totals do not sum to 100% because non-diploma (certificate) recipients and non-completers make up the remainder of school completion statistics.

Source: Hawaii State Department of Education: Office of Strategy, Innovation and Performance: Assessment and Accountability Branch: Accountability Section.

Table 10. Advanced Placement (AP) Program

	2011-12	2012-13	2013-14
Number of students enrolled in AP courses	4,831	5,460	5,470
Number of students who took AP exams	4,530	5,155	5,081
Number of exams taken	6,686	7,382	7,402
Number of AP exam results with a score of 3 or higher	2,603	2,819	3,013
Percent of exams passed	39%	38%	41%

Source: Hawaii State Department of Education: Office of Curriculum, Instruction and Student Support.

Profiles and Trends

Table 11. Number of Public Schools (and percentage of total)

	2011-12		2012-13		2013-14	
Total	286	100%	286	100%	288	100%
Elementary	166	58%	166	58%	167	58%
Middle/Intermediate	38	13%	38	13%	38	13%
High	33	12%	33	12%	33	11%
Multi-Level	17	6%	16	6%	16	6%
Charter	31	11%	32	11%	33	11%
Special	1	0%	1	0%	1	0%
Complex Areas	15		15		15	

Note: Totals may not be exactly 100% due to rounding.

Source: Hawaii State Department of Education: Office of Strategy, Innovation and Performance: Assessment and Accountability Branch: Accountability Section.

Table 12. Student Enrollment

	2011-12		2012-13		2013-14	
Official Enrollment Count	181,213	100%	183,251	100%	185,273	100%
K-6	103,336	57%	105,396	58%	107,920	58%
7-8	26,059	14%	26,564	14%	26,324	14%
9-12	51,818	29%	51,291	28%	51,029	28%
<i>Note: Totals may not be exactly 100% due to rounding.</i>						
Special Education (SPED)	17,751	10%	17,782	10%	17,741	10%
English Language Learner (ELL)	15,144	8%	13,885	8%	13,501	7%
Economically Disadvantaged	85,813	47%	93,476	51%	94,315	51%

Source: Hawaii State Department of Education: Office of Strategy, Innovation and Performance: Assessment and Accountability Branch: Accountability Section.

Table 13. Progress and Completion

	2011-12	2012-13	2013-14
Daily Average Attendance Rates			
Elementary	94.6%	94.2%	94.5%
Middle/Intermediate	94.5%	94.4%	94.6%
High	92.3%	92.1%	92.4%
Multi-level	93.1%	92.4%	92.5%
Charter	94.1%	93.3%	93.5%
Retention Rates			
Elementary	<0.5%	<0.5%	<0.5%
Middle/Intermediate	1.0%	1.0%	1.0%
Graduation Rate* (on time) Grades 9 through 12	82.2%	82.4%	81.7%
Drop Out Rate Grades 9 through 12	15.8%	14.6%	14.8%

**Percentages based on preliminary Adjusted Cohort Graduation Rate data.*

Source: Hawaii State Department of Education: Office of Strategy, Innovation and Performance: Assessment and Accountability Branch: Accountability Section.

Table 14. Staff, Full-Time Equivalent Positions

	2011-12	2012-13	2013-14
Classroom Teachers	11,068.5	11,147.8	11,106.0
Librarians	194.5	185.0	181.0
Counselors	609.9	606.4	606.0
Administrators			
School	525.0	523.0	541.0
State & Complex Area	223.0	230.0	231.0
Other Support Staff	8,623.4	8,590.0	8,638.5
Total	21,244.3	21,282.2	21,303.5

Source: Hawaii State Department of Education: Office of Strategy, Innovation and Performance: Assessment and Accountability Branch: Accountability Section.

Table 15. State Demographics

	2010 Census	2012 Est.	2013 Est.
Population	1,360,301	1,392,313	1,404,054
Under 5 yrs	87,407	88,108	90,706
5-9	83,361	85,539	81,291
10-14	81,539	82,146	86,759
15-19	85,994	80,754	80,269
Median Age, in years	38.7	38.3	38.1
Households			
Total	455,338	447,566	450,120
Families	313,907	307,582	311,203
Avg. Family Size	3.4	3.5	3.6
Income			
Median Family Income	\$76,134*	\$77,781**	\$80,316***
Per Capita Income	\$28,882*	\$28,099**	\$29,577***
Poverty, Families in	6.7%	8.6%	7.1%
Educational Attainment			
Percent high school or higher	89.9%	90.4%	91.0%
Percent 4-yr degree or higher	29.5%	30.1%	31.2%
* 2010 inflation-adjusted dollars.			
** 2012 inflation-adjusted dollars.			
*** 2013 inflation-adjusted dollars.			

Source: U.S. Census Bureau, American Community Survey.

School Finance

Table 16. State School Budget

	2011-12	2012-13	2013-14
APPROPRIATED FUNDS (millions)			
State			
General	\$2,036	\$2,110	\$2,263
Special	\$88	\$97	\$95
Trust	\$33	\$33	\$24
Federal	\$311	\$284	\$259
Total	\$2,468	\$2,524	\$2,641
EXPENDITURES (millions)			
State			
General	\$2,003	\$2,070	\$2,225
Special	\$54	\$56	\$40
Trust	\$6	\$7	\$8
Federal	\$283	\$279	\$289
Total	\$2,346	\$2,412	\$2,562

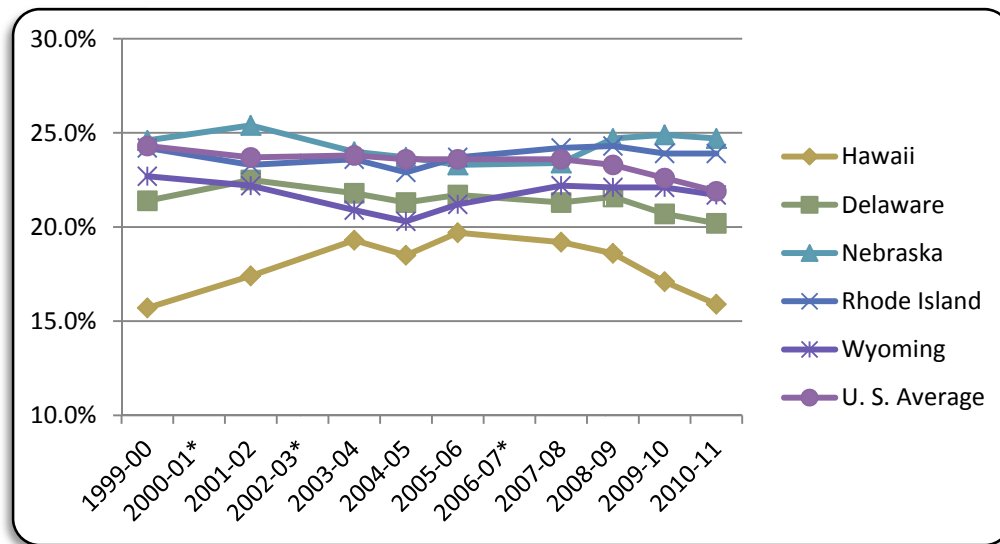
Source: Hawaii State Department of Education: Office of Fiscal Services.

Table 17. Key Finance Indicators

	2008-09	2009-10	2010-11
Key Finance Indicators			
Per pupil expenditure*	\$12,400	\$11,855	\$11,924
Percent state & local expenditures for public education (per capita)	18.6%	17.1%	15.9%
Rank**	50th	50th	50th
<p>* Figures are as reported in the 2013 <i>Digest of Education Statistics</i> and may have been updated from previous reports.</p> <p>** Rank is determined by comparing the "Percent state and local expenditures for public education (per capita)" of Hawaii to that of the other 49 states.</p>			

Sources: U.S. Census Bureau; National Center for Education Statistics.

Figure 5. Percentage of State & Local Expenditures per Capita Supporting Public Schools



* No data available

Source: National Center for Education Statistics

Educational Assessments

Table 18. National Assessment of Educational Progress (NAEP)

	2009		2011		2013	
	(Percent Proficient & Advanced)					
	<u>Hawaii</u>	<u>Nation</u>	<u>Hawaii</u>	<u>Nation</u>	<u>Hawaii</u>	<u>Nation</u>
Reading						
Grade 4	26%	32%	27%	32%	30%	34%
Grade 8	22%	30%	26%	32%	28%	34%
Mathematics						
Grade 4	37%	38%	40%	40%	46%	41%
Grade 8	25%	33%	30%	34%	32%	34%
Science						
Grade 4	25%	32%	--	--	--	--
Grade 8	17%	29%	22%	31%	--	--

Source: Hawaii State Department of Education: Office of Strategy, Innovation and Performance: Assessment and Accountability Branch: Accountability Section.

Table 19. Hawaii State Assessment, Percent Meets and Exceeds Proficiency

	2010-11			2011-12		
	All Schools	Department Schools Only	Charter Schools Only	All Schools	Department Schools Only	Charter Schools Only
	Reading			Reading		
Grade 3	67.1%	67.3%	64.8%	71.7%	72.4%	57.8%
Grade 4	69.3%	69.3%	68.3%	73.1%	73.8%	60.4%
Grade 5	68.2%	68.4%	64.9%	72.2%	72.6%	65.1%
Grade 6	72.1%	72.4%	68.7%	76.5%	77.2%	70.2%
Grade 7	66.7%	66.5%	69.4%	70.8%	70.4%	75.3%
Grade 8	67.8%	67.7%	70.3%	72.7%	72.5%	75.1%
Grade 10	66.8%	66.6%	76.3%	71.1%	70.9%	76.4%
	Mathematics			Mathematics		
Grade 3	65.6%	66.0%	55.4%	69.4%	70.3%	53.0%
Grade 4	63.2%	63.7%	53.2%	65.3%	66.1%	48.5%
Grade 5	60.7%	61.3%	47.5%	64.7%	65.2%	55.2%
Grade 6	58.4%	59.2%	49.2%	62.4%	63.8%	49.2%
Grade 7	55.0%	55.8%	45.9%	58.3%	58.9%	51.8%
Grade 8	55.9%	56.5%	43.9%	60.7%	61.4%	48.1%
Grade 10	41.1%	41.1%	40.3%	47.4%	47.5%	41.6%
	2012-13			2013-14		
	All Schools	Department Schools Only	Charter Schools Only	All Schools	Department Schools Only	Charter Schools Only
	Reading			Reading*		
Grade 3	71.9%	72.4%	63.4%	65.1%	65.1%	64.0%
Grade 4	74.2%	74.6%	66.4%	70.3%	70.8%	62.3%
Grade 5	73.1%	73.4%	69.0%	68.8%	68.9%	66.1%
Grade 6	74.6%	74.6%	74.6%	70.1%	70.1%	70.0%
Grade 7	72.5%	72.2%	77.7%	70.0%	69.8%	73.0%
Grade 8	73.7%	73.5%	77.7%	71.7%	71.3%	77.1%
Grade 10	70.5%	70.3%	76.2%	67.7%	67.3%	77.0%
	Mathematics			Mathematics*		
Grade 3	68.4%	69.0%	58.6%	63.1%	63.1%	62.7%
Grade 4	66.8%	67.5%	55.1%	62.4%	62.9%	54.2%
Grade 5	62.6%	63.2%	52.8%	64.7%	65.2%	55.3%
Grade 6	60.6%	60.9%	56.5%	54.9%	55.4%	48.1%
Grade 7	56.5%	57.2%	45.4%	55.2%	55.4%	52.1%
Grade 8	60.3%	61.0%	49.7%	59.1%	60.0%	45.8%
Grade 10	46.9%	47.1%	42.6%	42.4%	42.5%	38.5%
	Science			Science		
Grade 4	44.6%	45.1%	34.5%	52.9%	53.5%	41.9%
Grade 8	29.4%	29.2%	33.2%	34.8%	34.8%	35.2%
HS**	24.0%	24.0%	27.8%	30.2%	29.9%	37.3%

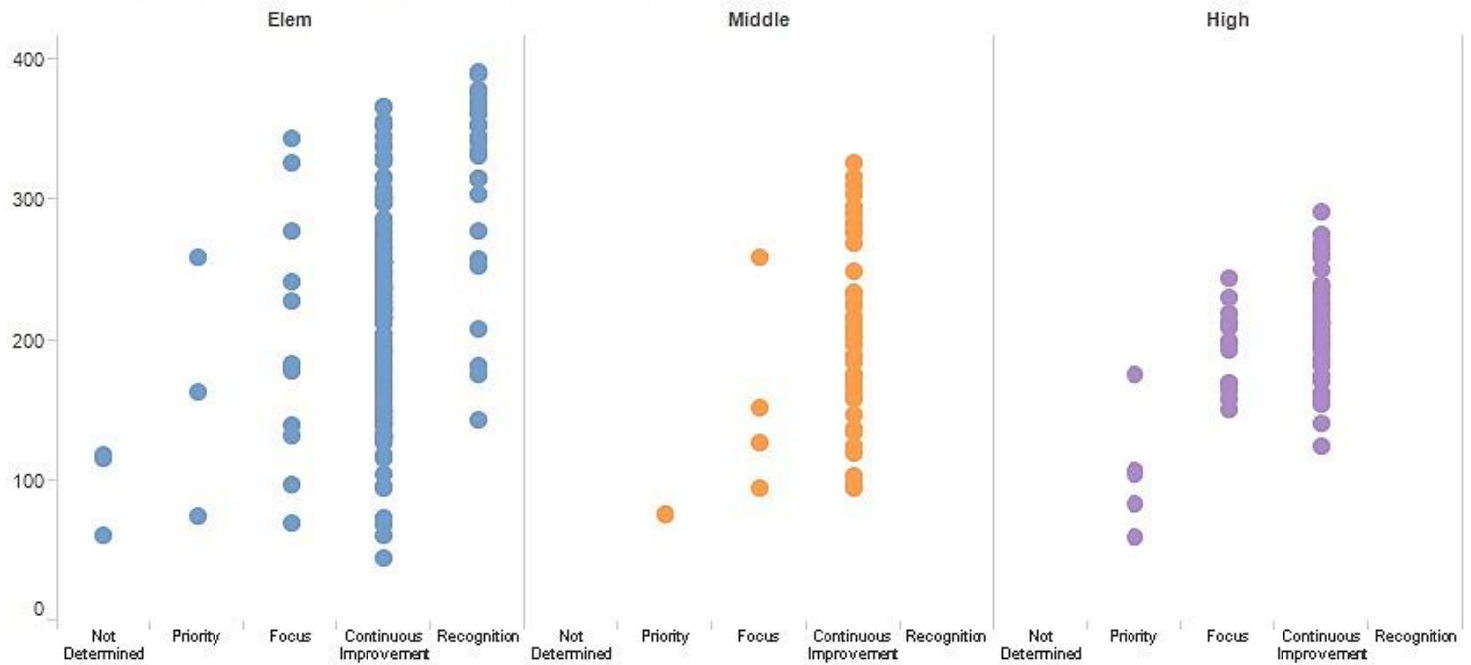
* Hawaii'i State Reading and Mathematics Bridge Assessments

** HS (High School) Science proficiency includes results for the Biology I End of Course exam and HSA-Alt

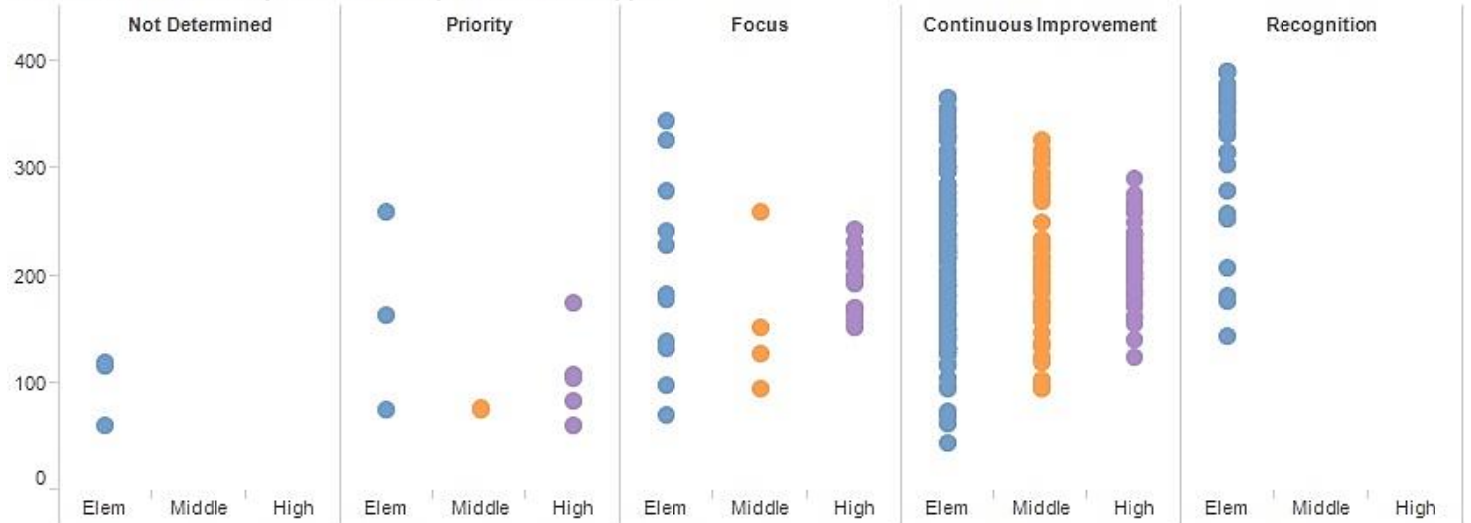
Source: Hawaii State Department of Education: Office of Strategy, Innovation and Performance: Data Governance and Analysis Branch.

Figure 6. Performance Index and Classification Summary for SY 2013-14

School Distribution by School Type and Strive HI Step



School Distribution by Strive HI Step and School Type



Number of Schools by School Type and Strive HI Step

Elem	Not Determined	3
	Priority	3
	Focus	12
	Continuous Improvement	129
	Recognition	25
Middle	Not Determined	0
	Priority	2
	Focus	4
	Continuous Improvement	43
	Recognition	0
High	Not Determined	0
	Priority	5
	Focus	15
	Continuous Improvement	47
	Recognition	0

Source: Hawaii State Department of Education: Office of Strategy, Innovation and Performance: Data Governance and Analysis Branch.

Table 20. Students by Complex in SY 2013-14

	Enrollment*	Attended Preschool	Economically Disadvantaged	Special Education	ELL	Graduated on-time
ALL SCHOOLS	185,273	4,362	94,315	17,741	13,501	81%
Department Schools	175,476	4,362	89,408	16,978	13,257	82%
HONOLULU: 2 Complex Areas / 6 Complexes						
Farrington	8,000	44%	73%	8%	22%	71%
Kaiser	4,001	87%	16%	8%	3%	90%
Kalani	4,283	93%	24%	7%	7%	90%
Kaimuki	4,487	60%	60%	11%	18%	68%
McKinley	4,672	45%	70%	8%	23%	81%
Roosevelt	6,061	68%	40%	8%	5%	80%
CENTRAL: 2 Complex Areas / 6 Complexes						
Aiea	4,188	78%	48%	10%	6%	90%
Moanalua	5,200	--	32%	8%	4%	93%
Radford	6,527	64%	31%	10%	3%	87%
Leilehua	8,101	44%	56%	11%	5%	82%
Mililani	8,069	74%	20%	9%	1%	92%
Waiialua	1,411	50%	53%	10%	4%	89%
LEEWARD: 3 Complex Areas / 6 Complexes						
Campbell	10,844	49%	46%	7%	5%	83%
Kapolei	6,570	57%	41%	9%	3%	81%
Nanakuli	2,343	53%	81%	16%	5%	74%
Waianae	5,861	42%	79%	13%	5%	73%
Pearl City	6,624	66%	36%	9%	4%	80%
Waipahu	8,717	9%	59%	8%	16%	79%
WINDWARD: 2 Complex Areas / 4 Complexes						
Castle	4,810	76%	50%	13%	2%	77%
Kahuku	3,552	58%	54%	10%	3%	89%
Kailua	2,891	71%	54%	13%	3%	73%
Kalaheo	3,936	76%	32%	10%	2%	87%
HAWAII: 3 Complex Areas / 10 Complexes						
Hilo	4,184	51%	65%	13%	6%	79%
Waiakea	3,680	75%	54%	11%	2%	83%
Kau	936	44%	88%	13%	21%	73%
Keaau	2,761	--	81%	13%	8%	84%
Pahoa	1,717	50%	87%	14%	5%	80%
Honokaa	1,861	51%	67%	10%	8%	84%
Kealahou	5,094	48%	60%	9%	14%	78%
Kohala	867	--	68%	15%	3%	88%
Konawaena	2,345	52%	70%	10%	8%	81%
MAUI: 2 Complex Areas / 7 Complexes						
Baldwin	4,480	44%	50%	8%	6%	87%
Kekaulike	4,086	73%	55%	11%	2%	71%
Maui	7,642	36%	52%	7%	12%	83%
Hana	336	--	82%	14%	0%	82%
Lahainaluna	3,228	47%	52%	9%	18%	85%
Lanai	582	--	41%	17%	13%	97%
Molokai	976	45%	76%	11%	3%	80%
KAUAI: 1 Complex Area / 3 Complexes						
Kapaa	3,204	--	53%	10%	4%	88%
Kauai	3,959	62%	47%	8%	6%	85%
Waimea	2,342	59%	53%	9%	6%	90%
SPECIAL						
Hawaii School for Deaf & Blind	48	--	71%	100%	35%	0%
Charter Schools	9,797	na	4,907	763	244	68%

* Based on the Fall 2013 Official Enrollment Count.

na = Not reportable due to small sample size.

-- = Missing or unavailable data

Source: Hawaii State Department of Education: Office of Strategy, Innovation and Performance: Assessment and Accountability Branch: Accountability Section.

Table 21. Teachers by Complex in SY 2013-14

		Classroom Teachers (headcount)	Fully Licensed	5+ Years at same School	Advanced Degree	Average Years Teaching Experience	Kindergarten Teachers w/ Early Childhood Endorsement
ALL SCHOOLS		11,310	10,938	6,811	4,106	13.2	66
Department Schools		10,984	10,617 97%	6,632 60%	3,965 36%	13.2	66 18%
HONOLULU	Farrington	496	99%	65%	38%	14	21%
	Kaiser	225	99%	64%	38%	13.5	22%
	Kalani	240	98%	64%	44%	13.6	17%
	Kaimuki	294	98%	69%	33%	15.8	14%
	McKinley	294	100%	55%	40%	14	9%
	Roosevelt	359	99%	67%	37%	14.6	0%
CENTRAL	Aiea	250	95%	64%	38%	13.6	33%
	Moanalua	301	99%	62%	46%	13.5	--
	Radford	406	98%	62%	30%	13.7	22%
	Leilehua	545	95%	57%	40%	12.8	21%
	Mililani	472	98%	68%	39%	13.9	0%
	Waialua	87	98%	67%	40%	14.4	17%
LEEWARD	Campbell	649	96%	48%	35%	11.5	13%
	Kapolei	393	98%	56%	37%	11.9	26%
	Pearl City	406	98%	68%	32%	14.8	15%
	Waipahu	539	98%	66%	34%	14.1	0%
	Nanakuli	167	87%	46%	35%	10.6	25%
	Waianae	399	89%	50%	28%	10	20%
WINDWARD	Castle	322	97%	64%	37%	15.1	15%
	Kahuku	231	97%	66%	29%	14.2	67%
	Kailua	226	96%	62%	35%	13	20%
	Kalaheo	248	97%	52%	44%	12.7	11%
HAWAII	Hilo	273	99%	64%	31%	14.8	29%
	Waiakea	215	100%	69%	31%	15.3	0%
	Kau	72	85%	39%	32%	7.3	0%
	Keaau	193	98%	63%	35%	13	--
	Pahoa	119	97%	56%	43%	12.9	22%
	Honokaa	118	92%	54%	36%	12.5	33%
	Kealakehe	315	90%	60%	33%	11.9	6%
	Kohala	59	90%	56%	41%	13.3	--
	Konawaena	153	88%	52%	32%	12.5	20%
MAUI	Baldwin	261	99%	57%	38%	13.1	50%
	Kekaulike	270	99%	63%	38%	13.5	11%
	Maui	456	99%	60%	36%	12.4	17%
	Hana	29	90%	59%	38%	11.3	--
	Lahainaluna	196	97%	56%	40%	10.7	33%
	Lanai	40	93%	50%	28%	10.8	--
	Molokai	71	99%	72%	30%	14	1%
KAUAI	Kapaa	190	97%	59%	33%	13.5	--
	Kauai	243	97%	59%	36%	13.3	17%
	Waimea	148	97%	66%	40%	14	0%
SPECIAL							
Hawaii School for Deaf & Blind		14	64%	21%	71%	5.4	--
Charter Schools		326	321	179	141	10.5	na

na = Not reportable due to small sample size.

-- = Missing or unavailable data

Source: Hawaii State Department of Education: Office of Strategy, Innovation and Performance: Assessment and Accountability Branch: Accountability Section.

Table 22. SY 2013-14 Wellness Indicators by Complex (results for participating schools)

	Number of Participating Schools	Participation Rate (of total public school count)	Schools with a Wellness Committee	All Food & Beverages Sold Met Compliance	Required Health Ed Classes Met Recommended Minutes	Required PE Classes Met Recommended Minutes	≥20 Minutes Recess Per Day	Average % of Wellness Guidelines Met
STATE OVERALL	165	65%	78%	44%	77%	84%	84%	79%
Aiea-Moanalua-Radford	14	64%	64%	29%	50%	71%	79%	74%
Aiea Complex	5	71%	80%	40%	80%	100%	80%	80%
Moanalua Complex	5	83%	20%	40%	40%	80%	80%	70%
Radford Complex	4	44%	100%	0%	25%	25%	75%	71%
Baldwin-Kekaulike-Maui	12	63%	83%	50%	100%	100%	92%	83%
Baldwin Complex	1	20%	100%	100%	100%	100%	100%	82%
Kekaulike Complex	6	86%	100%	17%	100%	100%	83%	81%
Maui Complex	5	63%	60%	80%	100%	100%	100%	85%
Campbell-Kapolei	11	69%	82%	55%	73%	100%	91%	78%
Campbell Complex	7	70%	86%	57%	71%	100%	100%	76%
Kapolei Complex	4	67%	75%	50%	75%	100%	75%	81%
Castle-Kahuku	16	100%	100%	50%	75%	94%	88%	89%
Castle Complex	10	100%	100%	40%	80%	90%	90%	88%
Kahuku Complex	6	100%	100%	67%	67%	100%	83%	92%
Farrington-Kaiser-Kalani	13	52%	69%	46%	69%	85%	100%	79%
Farrington Complex	8	67%	63%	50%	75%	88%	100%	79%
Kaiser Complex	3	50%	67%	0%	33%	67%	100%	69%
Kalani Complex	2	29%	100%	100%	100%	100%	100%	96%
Hana-Lahainaluna-Lanai-Molokai	11	100%	82%	18%	82%	91%	82%	73%
Hana Complex	1	100%	100%	0%	0%	100%	100%	78%
Lahainaluna Complex	4	100%	75%	50%	100%	100%	50%	70%
Lanai Complex	1	100%	100%	0%	100%	100%	100%	78%
Molokai Complex	5	100%	80%	0%	80%	80%	100%	73%
Hilo-Laupahoehoe-Waiakea	5	39%	80%	80%	100%	80%	80%	78%
Hilo Complex	5	56%	80%	80%	100%	80%	80%	78%
Waiakea Complex	0	0%	--	--	--	--	--	--
Honokaa-Kealakehe-Kohala-Konawaena	10	53%	40%	30%	100%	90%	100%	70%
Honokaa Complex	2	50%	0%	0%	100%	100%	100%	58%
Kealakehe Complex	2	33%	50%	50%	100%	100%	100%	77%
Kohala Complex	2	67%	50%	0%	100%	50%	100%	64%
Konawaena Complex	4	67%	50%	50%	100%	100%	100%	76%
Kailua-Kalaheo	13	93%	85%	39%	69%	77%	77%	84%
Kailua Complex	7	88%	71%	29%	57%	86%	71%	82%
Kalaheo Complex	6	100%	100%	50%	83%	67%	83%	86%
Kaimuki-McKinley-Roosevelt	17	61%	65%	41%	77%	88%	71%	75%
Kaimuki Complex	5	50%	60%	60%	80%	100%	60%	75%
McKinley Complex	7	88%	43%	43%	71%	86%	57%	70%
Roosevelt Complex	5	50%	100%	20%	80%	80%	100%	82%
Kapaa-Kauai-Waimea	4	27%	75%	25%	50%	50%	100%	77%
Kapaa Complex	0	0%	--	--	--	--	--	--
Kauai Complex	2	40%	100%	50%	50%	50%	100%	82%
Waimea Complex	2	40%	50%	0%	50%	50%	100%	73%
Kau-Keaau-Pahoa	2	22%	50%	50%	100%	100%	50%	82%
Kau Complex	0	0%	--	--	--	--	--	--
Keaau Complex	1	25%	100%	0%	100%	100%	100%	91%
Pahoa Complex	1	33%	0%	100%	100%	100%	0%	73%
Leilehua-Mililani-Waialua	18	90%	89%	33%	78%	83%	83%	82%
Leilehua Complex	9	90%	89%	33%	67%	78%	100%	81%
Mililani Complex	6	86%	100%	50%	100%	100%	67%	87%
Waialua Complex	3	100%	67%	0%	67%	67%	67%	76%
Nanakuli-Waianae	7	78%	86%	57%	71%	57%	71%	76%
Nanakuli Complex	3	100%	100%	67%	100%	100%	67%	91%
Waianae Complex	4	67%	75%	50%	50%	25%	75%	65%
Pearl City-Waipahu	12	71%	92%	75%	83%	75%	75%	81%
Pearl City Complex	8	80%	100%	88%	75%	75%	88%	84%
Waipahu Complex	4	57%	75%	50%	100%	75%	50%	74%

Source: Hawaii State Department of Health.

Table 23. Percent Meets and Exceeds Proficiency on HSA Reading by Grade and Complex for SY 2013-14

District	Complex Area	Complex	3	4	5	6	7	8	10	All Tested Grades
ALL SCHOOLS			65%	70%	69%	70%	70%	72%	68%	69%
Department Schools			65%	71%	69%	70%	70%	71%	67%	69%
Honolulu	Farrington-Kaiser-Kalani	Farrington	50%	57%	55%	52%	51%	58%	54%	54%
		Kaiser	84%	89%	87%	91%	88%	90%	76%	87%
		Kalani	89%	86%	88%	86%	88%	88%	81%	87%
	Kaimuki-McKinley-Roosevelt	Kaimuki	60%	70%	73%	63%	69%	72%	65%	68%
		McKinley	53%	62%	57%	49%	50%	45%	59%	56%
		Roosevelt	77%	84%	81%	73%	75%	75%	80%	78%
Central	Aiea-Moanalua-Radford	Aiea	67%	71%	70%	74%	79%	78%	61%	71%
		Moanalua	74%	81%	77%	82%	87%	86%	79%	81%
		Radford	76%	79%	79%	82%	67%	69%	78%	77%
	Leilehua-Mililani-Waialua	Leilehua	66%	70%	68%	66%	73%	71%	71%	69%
		Mililani	83%	86%	86%	85%	86%	84%	78%	84%
		Waialua	86%	86%	83%	93%	74%	69%	66%	79%
Leeward	Campbell-Kapolei	Campbell	61%	69%	66%	69%	77%	75%	73%	70%
		Kapolei	60%	70%	68%	65%	67%	67%	64%	66%
	Nanakuli-Waianae	Nanakuli	40%	39%	40%	54%	43%	48%	49%	44%
		Waianae	43%	44%	49%	48%	53%	47%	58%	48%
	Pearl City-Waipahu	Pearl City	75%	81%	78%	83%	82%	81%	74%	79%
		Waipahu	52%	60%	59%	64%	54%	61%	59%	58%
Windward	Castle-Kahuku	Castle	76%	80%	81%	79%	79%	86%	67%	78%
		Kahuku	76%	73%	79%	80%	74%	67%	68%	74%
	Kailua-Kalaheo	Kailua	81%	83%	67%	79%	60%	76%	47%	72%
		Kalaheo	80%	85%	83%	84%	79%	82%	76%	81%
Hawaii	Hilo-Waiakea	Hilo	63%	61%	62%	73%	71%	77%	68%	67%
		Waiakea	63%	66%	66%	70%	79%	77%	67%	70%
	Honokaa-Kealakehe-Kohala-Konaweana	Honokaa	43%	67%	52%	55%	68%	63%	67%	58%
		Kealakehe	60%	70%	66%	70%	65%	66%	73%	67%
		Kohala	64%	77%	52%	49%	71%	72%	68%	64%
		Konawaena	53%	68%	76%	61%	65%	73%	65%	66%
	Kau-Keaau-Pahoa	Kau	30%	36%	48%	47%	46%	48%	51%	43%
		Keaau	61%	66%	62%	54%	54%	65%	68%	61%
		Pahoa	53%	61%	62%	63%	56%	61%	67%	60%
Maui	Baldwin-Kekaulike-Maui	Maui	66%	66%	70%	68%	65%	69%	56%	65%
		Baldwin	65%	76%	75%	75%	79%	75%	68%	73%
		Kekaulike	69%	74%	71%	75%	67%	66%	64%	70%
	Hana-Lahainaluna-Lanai-Molokai	Hana	58%	58%	55%	35%	72%	80%	60%	59%
		Lahainaluna	61%	72%	60%	56%	62%	62%	55%	61%
		Lanai	49%	39%	62%	49%	57%	64%	83%	56%
		Molokai	68%	60%	69%	74%	71%	63%	46%	64%
Kauai	Kapaa-Kauai-Waimea	Kauai	57%	63%	60%	66%	69%	76%	66%	65%
		Kapaa	61%	69%	60%	67%	63%	71%	70%	66%
		Waimea	62%	64%	61%	57%	51%	66%	71%	62%
Special	Hawaii School for Deaf & Blind	Kalani	na	na	na	na	na	na	na	na
	Charter Schools		64%	62%	66%	70%	73%	77%	77%	70%

na = Not reportable due to small sample size.

Source: Hawaii State Department of Education: Office of Strategy, Innovation and Performance: Data Governance and Analysis Branch.

Table 24. Percent Meets and Exceeds Proficiency on HSA Mathematics by Grade and Complex for SY 2013-14

District	Complex Area	Complex	3	4	5	6	7	8	10	All Tested Grades
ALL SCHOOLS			63%	62%	65%	55%	55%	59%	42%	58%
Department Schools			63%	63%	65%	55%	55%	60%	43%	58%
Honolulu	Farrington-Kaiser-Kalani	Farrington	49%	50%	63%	48%	35%	51%	42%	48%
		Kaiser	82%	85%	83%	79%	81%	77%	56%	78%
		Kalani	87%	84%	86%	74%	78%	83%	64%	79%
	Kaimuki-McKinley-Roosevelt	Kaimuki	62%	67%	69%	52%	46%	64%	21%	58%
		McKinley	56%	61%	62%	41%	30%	37%	40%	51%
		Roosevelt	78%	81%	79%	61%	63%	66%	41%	68%
Central	Aiea-Moanalua-Radford	Aiea	61%	60%	61%	61%	67%	67%	44%	60%
		Moanalua	73%	67%	66%	66%	67%	62%	45%	63%
		Radford	72%	68%	74%	65%	48%	40%	42%	61%
	Leilehua-Mililani-Waialua	Leilehua	59%	61%	66%	47%	64%	67%	48%	59%
		Mililani	82%	84%	84%	66%	71%	73%	61%	75%
		Waialua	86%	87%	83%	91%	52%	53%	49%	70%
Leeward	Campbell-Kapolei	Campbell	53%	56%	58%	47%	59%	57%	53%	55%
		Kapolei	57%	50%	64%	48%	47%	46%	29%	49%
	Nanakuli-Waianae	Nanakuli	39%	36%	35%	35%	28%	34%	13%	32%
		Waianae	45%	41%	45%	38%	39%	39%	38%	41%
	Pearl City-Waipahu	Pearl City	76%	77%	77%	76%	72%	73%	44%	71%
		Waipahu	50%	53%	59%	52%	45%	57%	37%	51%
Windward	Castle-Kahuku	Castle	75%	67%	71%	66%	71%	73%	38%	66%
		Kahuku	74%	61%	73%	64%	53%	45%	29%	58%
	Kailua-Kalaheo	Kailua	84%	71%	61%	68%	42%	63%	33%	63%
		Kalaheo	76%	74%	70%	63%	68%	65%	44%	66%
Hawaii	Hilo-Laupahoehoe-Waiakea	Hilo	57%	54%	58%	65%	71%	73%	39%	59%
		Waiakea	56%	57%	58%	58%	62%	70%	53%	59%
	Honokaa-Kealakehe-Kohala-Konaweana	Honokaa	40%	59%	44%	36%	46%	44%	31%	44%
		Kealakehe	62%	64%	51%	36%	45%	73%	57%	56%
		Kohala	54%	68%	54%	32%	45%	62%	35%	50%
		Konawaena	54%	58%	62%	38%	43%	47%	34%	47%
	Kau-Keaau-Pahoa	Kau	26%	29%	43%	30%	29%	30%	22%	30%
		Keaau	59%	67%	63%	44%	44%	53%	54%	55%
		Pahoa	51%	48%	57%	49%	39%	48%	46%	48%
Maui	Baldwin-Kekaulike-Maui	Baldwin	60%	60%	63%	46%	59%	47%	44%	54%
		Kekaulike	63%	68%	68%	57%	52%	68%	33%	59%
		Maui	72%	68%	72%	58%	51%	62%	44%	62%
	Hana-Lahainaluna-Lanai-Molokai	Hana	58%	51%	55%	22%	45%	73%	25%	47%
		Lahainaluna	54%	55%	62%	47%	42%	56%	27%	49%
		Lanai	51%	32%	60%	44%	60%	38%	54%	48%
		Molokai	67%	51%	60%	51%	51%	54%	30%	51%
Kauai	Kapaa-Kauai-Waimea	Kauai	53%	54%	59%	48%	56%	68%	29%	52%
		Kapaa	68%	66%	59%	57%	57%	66%	41%	59%
		Waimea	58%	52%	57%	45%	56%	45%	34%	51%
Special	Hawaii School for Deaf & Blind	Kalani	na	na	na	na	na	na	na	na
Charter Schools			63%	54%	55%	48%	52%	46%	38%	51%

na = Not reportable due to small sample size.

Source: Hawaii State Department of Education: Office of Strategy, Innovation and Performance: Data Governance and Analysis Branch.

Table 25. Percent Meets and Exceeds Proficiency on HSA Science by Grade and Complex for SY 2013-14

District	Complex Area	Complex	4	8	HS*	All Tested Grades
ALL SCHOOLS			53%	35%	30%	40%
Department Schools			53%	35%	30%	40%
Honolulu	Farrington-Kaiser-Kalani	Farrington	45%	22%	23%	31%
		Kaiser	86%	57%	47%	63%
		Kalani	83%	59%	37%	60%
	Kaimuki-McKinley-Roosevelt	Kaimuki	54%	40%	15%	42%
		McKinley	44%	17%	24%	32%
		Roosevelt	81%	42%	62%	61%
Central	Aiea-Moanalua-Radford	Aiea	57%	54%	29%	49%
		Moanalua	57%	50%	47%	51%
		Radford	57%	49%	41%	50%
	Leilehua-Mililani-Waialua	Leilehua	56%	36%	22%	41%
		Mililani	80%	55%	53%	63%
		Waialua	62%	44%	25%	41%
Leeward	Campbell-Kapolei	Campbell	47%	35%	34%	39%
		Kapolei	35%	17%	34%	28%
	Nanakuli-Waianae	Nanakuli	17%	18%	14%	16%
		Waianae	28%	9%	16%	18%
	Pearl City-Waipahu	Pearl City	72%	41%	32%	50%
		Waipahu	33%	32%	22%	29%
Windward	Castle-Kahuku	Castle	65%	38%	33%	47%
		Kahuku	48%	27%	17%	32%
	Kailua-Kalaheo	Kailua	59%	45%	22%	43%
		Kalaheo	68%	50%	50%	56%
Hawaii	Hilo-Laupahoehoe-Waiakea	Hilo	52%	31%	23%	36%
		Waiakea	48%	36%	31%	38%
	Honokaa-Kealahkehe-Kohala-Konaweana	Honokaa	45%	29%	23%	34%
		Kealahkehe	53%	38%	41%	45%
		Kohala	56%	28%	8%	29%
		Konawaena	51%	23%	21%	31%
	Kau-Keaau-Pahoa	Kau	23%	19%	18%	20%
		Keaau	58%	25%	25%	36%
		Pahoa	42%	12%	11%	24%
Maui	Baldwin-Kekaulike-Maui	Baldwin	45%	26%	25%	32%
		Kekaulike	52%	44%	32%	43%
		Maui	55%	25%	25%	37%
	Hana-Lahainaluna-Lanai-Molokai	Hana	44%	67%	5%	38%
		Lahainaluna	43%	6%	16%	21%
		Lanai	13%	11%	24%	15%
		Molokai	39%	24%	22%	27%
Kauai	Kapaa-Kauai-Waimea	Kauai	43%	35%	27%	35%
		Kapaa	52%	29%	23%	35%
		Waimea	47%	31%	23%	36%
Special	Hawaii School for Deaf & Blind	Kalani	na	na	na	na
Charter Schools			42%	35%	37%	38%

*HS (High School) Science proficiency is measured by the Biology I End of Course exam and the HSA-AIT

na = Not reportable due to small sample size.

Source: Hawaii State Department of Education: Office of Strategy, Innovation and Performance: Data Governance and Analysis Branch.

Appendices

Appendix A. Glossary

This glossary explains the educational and fiscal terms and measures contained in the Superintendent's Annual Report. An "na" indicates data are "not appropriate" or "not reportable." A "--" indicates data are missing or unavailable. Due to rounding of percentages, there may be slight differences among published reports (for example, 9.6% may be reported as 10% for the same measure in different reports).

Administrators, School: This is a Full-Time Equivalent (FTE) count of all principals and vice-principals.

Administrators, State and Complex Area: This is an FTE count of the positions responsible for the administrative support of programs, curriculum, and state or federal legal requirements at the complex area and state levels. Examples of FTE positions include complex areas superintendents, evaluation specialists, facilities planners, personnel specialists, test development specialists, budget specialists, information (data) specialists, state and district curriculum/educational specialists, and safety/security program specialists.

Appropriated Funds: Funds determined by the state legislature and enacted by the governor to provide basic support for the Hawaii State Department of Education to operate a statewide school district.

Attendance Rate: The percentage of the official student enrollment attending school every day during the school year. For example, 95% means that on any given day during the given school year, an average of 95% of the students are present in school.

Average Years Teaching Experience: This is a simple average of the number of years of approved teaching experience within the Hawaii Department of Education.

Charter Schools: Charter schools are public schools operated and managed by independent governing boards. They operate under a performance contract with the State Public Charter School Commission, the statewide charter school authorizer. The Commission approves quality applications for new charter schools, monitors the performance and legal compliance of existing charter schools, and is responsible to the Board of Education.

Classroom Teachers, FTE or Headcount: An FTE Classroom Teacher count is a position count of all teachers who are directly teaching students. Unlike FTE, "Headcount" is a simple count of the number of teachers who are directly teaching students. Thus, 1.5 FTE teachers may have a headcount of two (one 1.0 FTE and one 0.5 FTE) or three (three teachers in 0.5 FTE positions).

Complex: This smaller division within a Complex Area consisting of a high school and the middle/intermediate and elementary schools within its attendance boundary.

Complex Areas: These are administrative units made up of two or more complexes.

Demographics, State: Figures reported by the U.S. Census Bureau for years other than decennial 10-year censuses are estimates and are updated periodically. Such estimates in this report are from the American Community Survey. For an explanation of terms, definitions, and criteria used for classification, please visit the U.S. government website for the census: www.census.gov.

Dropout Rate: This four-year dropout rate is the percentage of high school students who have not returned to school and have either officially exited as "drop-outs", have school enrollment statuses that are undetermined, or have not graduated within four years.

Early Childhood Endorsement: To earn an Early Childhood Endorsement certificate, a teacher must have earned 18 credits in Child & Family Studies; completed all course requirements for Elementary Education and an additional 12 credits in Early Childhood Education; and have successfully completed student teaching in kindergarten or in first or second grade classes.

Economically Disadvantaged: These are students whose families meet the income qualifications for the federal free/reduced-cost lunch program. This is an indicator of school-community poverty.

English Language Learners (ELL): Students certified as receiving English-as-a-second-language services.

Enrollment Count, Official: The official enrollment count of each school is reported to the state upon the yearly opening of school. A school's enrollment may fluctuate over the course of the school year; thus, an enrollment count taken mid-year may be different from its official enrollment count.

Federal Funds: Funds provided by the federal government for use by the state public school system through grants from various federal agencies, such as the U.S. Department of Education, U.S. Department of Defense, and U.S. Department of Agriculture.

5 or More Years at Same School: Percent of teachers who have taught at one school for five or more years. It is an indicator of school staffing stability. Schools with moderate levels of mobility are considered most successful in implementing and sustaining school improvement efforts.

Fully Licensed: Teachers who meet the requirements (e.g., earned at least a bachelor's degree and completed an approved teacher training program) to be fully licensed by the Hawaii State Teachers Standards Board.

Full-Time Equivalent (FTE): These are position counts and are the sum of full- and part-time positions. Note that partial counts are possible. For example, one full-time (1.0 FTE) and one half-time (0.5 FTE) would count as 1.5 FTEs.

General Funds: The primary source of funding for the state public school system provided by the state through taxpayer revenues.

Graduation, Graduation Rate, Graduate On Time, Four-Year Graduation: Count or percentage of all high school students, including public charter school students, who had completed high school within four years of their 9th grade entry date. Special Education students receiving certificates of completion and students taking more than four years to complete high school are not included. For more information on the new Adjusted Cohort Graduation Rate methodology, visit the U.S. DOE website:

<http://www2.ed.gov/policy/elsec/guid/hsgguidance.pdf>

National Assessment of Educational Progress (NAEP): These are norm-referenced tests in reading, mathematics, and science developed and administered by the U.S. Department of Education to sampled groups of students in grade 4 and 8 in all states. The data from the NAEP include state results for demographic groups of students, but not for Complex Areas, schools, or individual students. The metrics that NAEP uses include average scale scores and the percentages of students achieving NAEP Advanced, NAEP Proficient, NAEP Basic, and NAEP Below Basic. Advanced and Proficient denote mastery of challenging subject matter, including success on some items that are above the grade level of the students being tested. NAEP defines Basic as denoting partial mastery of prerequisite knowledge and skills that are fundamental for proficient work at each grade assessed. Below Basic means performance below the grade level being tested. These achievement levels overlap with, but are not identical to, the proficiency levels of the Hawaii State Assessment.

Not Suspended, Students: The number of students who are not suspended by the school and an indicator of appropriate student behavior at school.

Perceptions of Safety and Well-Being, Student and Teacher: Positive responses (“Strongly agree” and “Agree”) to a set of items on the Hawaii State Department of Education’s annual School Quality Survey (SQS) regarding school safety and well-being. The percentage of positive responses are reported.

Per-Pupil Expenditure: The numbers reported by the National Center of Education Statistics (NCES) may be used for state-to-state comparisons. Numbers are based on membership and can be expected to be smaller than per pupil expenditures based on average daily attendance. Current expenditure for public elementary and secondary education in a state is divided by the student membership. Current expenditures are funds spent for the operation of local public schools and local education agencies, including such operating expenses as salaries for school personnel, student transportation, school books and materials, and energy costs, but excluding capital outlay and interest on school debt.

Preschool, Attended: This is the percentage of students entering kindergarten reported as having attended preschool.

Private Schools: Privately-operated schools not under the direction of the Hawaii State Department of Education.

Retention Rates for Elementary: Percentage of students, excluding kindergartners, who are not promoted to the next grade level. A low retention rate is desired.

Retention Rates for Middle & Intermediate: Percentage of 8th grade students who are not promoted to 9th grade the following year. A low retention rate is desired.

Schools, Total: The total number is the sum of all public schools. All regular public schools, public charter schools, and special schools are in this count. The Community Schools for Adults are not included.

Section 504: Regulation requiring schools to provide a “free appropriate public education” (FAPE) to each qualified student with a disability who is in the school district’s jurisdiction regardless of the nature or severity of that disability.

Special Education (SPED): This count and percentage contain all special education students listed on the official enrollment report as receiving special education services.

Special Funds: Funds generated through revenue sources other than state taxpayer revenues, such as cafeteria collections from students; adult education tuition/fees; summer school tuition; driver education fees; facility rental fees; and lost textbook penalty fees.

Special Needs, Multiple: Students identified and/or qualified as special needs under more than one of the following categories: economically disadvantaged as determined by receiving free/reduced-cost lunch, Section 504 classification, and certified as receiving special education or English Language Learner services.

Standards-based Assessment: These tests measure student achievement in reading, mathematics, and science based on Hawaii content standards. The percentages shown are assessment results. “*Percent Meets and Exceeds Proficiency*” is derived from test results that meet or exceed proficiency (i.e., proficiency cut-score).

State and Local Expenditures Supporting Public Education, Percent: This percentage is published in the annual U.S. Department of Education National Center of Education Statistics (NCES) *Digest of Educational Statistics* publication. The percentage is calculated by dividing the states' "Total, all general expenditures per capita" by the states' "Elementary and secondary education expenditures per capita." The "Total, all general expenditures per capita" includes state and local government expenditures for education services, social services, and income maintenance, transportation, public safety, environment and housing, governmental administration, interest on general debt, and other general expenditures, including intergovernmental expenditure to the federal government, as reported by the state's NCES Common Core of Data Financial Survey.

Support Staff, Other: This is an FTE count that encompasses a wide range of positions that support schools. This category may include, but is not limited to, school assessment liaisons, athletic directors, registrars, state and district resource teachers, school psychologists, custodians, cafeteria workers, school secretaries, school security guards, educational assistants, occupational therapists, mental health assistants, behavioral specialists, and student service coordinators. Note that the assignment of positions to categories is based on U.S. Department of Education National Center for Education Statistics Common Core of Data Non-Fiscal Survey requirements.

Trust Funds: Funds segregated for specific purposes, such as foundation grants and athletic gate receipts.

Wellness: Student wellness is affected by nutrition education, the food served in schools, and the amount of physical activity students engage in. The DOE also recognizes that when students' wellness needs are met, they attain higher achievement levels.

Appendix B. References and Resources

Educational and Accountability Reports

Accountability Data Center

This is a web portal for educational accountability information. It complements the many federally- and state-required accountability reports at the school, complex, Complex Area, and state levels that are available as static documents on the Hawaii State Department of Education's ARCH (Accountability Resource Center-Hawaii) website.

<http://arch.k12.hi.us>

Enrollment

These reports have student enrollment figures by districts, state and grade-level groups.

View in the Report Finder. <http://bit.ly/ReportFinder>

Hawaii State and School Readiness Assessment

These school and state reports produced in partnership with Good Beginnings Alliance and Kamehameha Schools provide information on the entering skills and characteristics of kindergarten children that contribute to successful early learning experiences and on the readiness of schools to support these young children's learning. View in the Report Finder. <http://bit.ly/ReportFinder>

National Assessment of Educational Progress (NAEP)

The NAEP website has three sets of information of special interest to educators and the general public. A visitor to the website can access them by viewing the key words along the top margin. SAMPLE QUESTIONS provides the visitor with all of the released items since "state NAEP" began in 1990. ANALYZE DATA provides a tool by which an educator or a researcher can retrieve NAEP results by subjects, grades, and demographics. STATE PROFILES provides general results for all states. Anyone seeking help with accessing and using these data tools is welcome to contact NAEP state coordinator, Robert Hillier at robert_hillier@notes.k12.hi.us or (808) 733-4100. The NAEP website contains a large amount of additional information and links to other assessment-related web sites. <http://nces.ed.gov/nationsreportcard/naepdata/>

School Quality Survey (SQS)

The survey gathers school staff, student and parent perceptions that are useful for school improvement and planning efforts. The SQS also provides information about parent involvement and parent and student satisfaction with their schools. View in the Report Finder.

<http://bit.ly/ReportFinder>

School Status and Improvement Report (SSIR)

Each SSIR has a description of the school and its setting, a summary of progress in implementing Hawaii standards, and information on school resources and educational outcomes.

View in the Report Finder. <http://bit.ly/ReportFinder>

Strive HI

The current school accountability and improvement system is designed to meet the needs of Hawaii's students, educators, and schools. It aligns and connects our key state education policies and initiatives to position students and educators for success. <http://bit.ly/StriveHISystem>

Trend Report: Educational & Fiscal Accountability

This annual report contains three years of trend data on schools, school complexes, and the Hawaii State Department of Education at selected benchmark grade levels with performance indicators in areas relating to student achievement, safety and well-being, and civic responsibility. These reports are designed to present trend data information to the public in a concise format for each complex and school as well as for the state. View in the Report Finder. <http://bit.ly/ReportFinder>

Financial Reports

Allocations by School Program

These annual reports contain dollar amounts allocated by Allocation Number, Program, or Organization. View on the Department's Budget page: <http://bit.ly/DOEbudget>

Annual Financial Reports

This Annual Financial Report is prepared each year to inform interested persons of the total cost of public education in the State of Hawaii. The reports provide both Operating and Capital Improvement Project fund information that is useful in presenting our educational system's financing, expenditures and per pupil information. View in the Report Finder. <http://bit.ly/ReportFinder>

Annual Financial and Single Audit Reports

The annual report on the financial audit of the Hawaii State Department of Education forms an opinion on the fairness of the presentation of its financial statements to comply with requirements for state and local governments that receive federal financial assistance. View in the Report Finder. <http://bit.ly/ReportFinder>

Special Education Reports

Annual Performance Report & State Performance Plan

These documents are the state's plans and reports in accordance with the Individuals with Disabilities Education Improvement Act of 2004. Included are evaluations of the state's efforts and plans for improving implementation. View on the Department's Special Education Performance Report page: <http://bit.ly/HIDOEspedreport>

Due Process Hearings Findings

The findings of due process hearings are provided for public information. View on the Department's Special Education page: <http://bit.ly/HIDOEsped>

Other Resources

Center on the Family

This resource provides access to research reports, informational articles, videos, brochures, and other materials designed to support and strengthen families in Hawaii. The Center on the Family at the University of Hawaii-Manoa also issues an annual report on a core set of indicators reflecting overall well-being of Hawaii families.
<http://uhfamily.hawaii.edu>

Hawaii P-3

An initiative by Hawaii P-20 to increase children's social-emotional and cognitive development toward the end goal of reading at grade level by third grade.
<http://p3hawaii.org/>

Hawaii P-20 Partnerships for Education

A statewide partnership led by the Good Beginnings Alliance, the Hawaii State Department of Education, and the University of Hawaii System to strengthen early childhood through post-secondary education so that all students achieve career and college success. Annual College and Career Readiness reports are available on its website.
<http://www.p20hawaii.org/>

State Public Charter School Commission

The State Public Charter School Commission (SPCSC or Commission) is the statewide charter school authorizer whose mission is to authorize high-quality public charter schools throughout Hawaii. The Commission approves quality applications for new charter schools and monitors the performance and legal compliance of existing charter schools. Charter schools are public schools operated and managed by independent governing boards that are responsible for the schools' financial, organizational, and academic viability. Although they are funded on a "per-pupil" basis separately from Department of Education-operated schools, charter schools are open-enrollment public schools that serve all students and do not charge tuition. Annual reports are available on its website.
<http://www.chartercommission.hawaii.gov>

Appendix C. Data Tables

Data tables are available online at:

http://arch.k12.hi.us/state/superintendent_report/annual_report.html

1. Enrollment in Hawaii Public and Private Schools
2. Enrollment by District
3. Special Needs Affecting Public School Students in Hawaii
4. Average Attendance Rates by School Type
5. Four-year Graduation and Dropout Rates
6. Ethnicity of Students and Teachers
7. Hawaii Content and Performance Standards Assessments
8. Chapter 19 Charges Categorized by Type of Incident
9. Administrative Staff as a Proportion of Total Staff: Hawaii and Comparison States
10. Expenditures per Pupil: Hawaii and Comparison States
11. Hawaii and States with Similar Financial Resources
12. Percent of State and Local Expenditures Supporting Public Education (K-12): Hawaii and Comparison States
13. Percent of State and Local Expenditures Supporting Public Education (K-12) and Per Pupil Expenditures: All States

2014 Superintendent's 25th Annual Report

Data Tables

List of Tables

Table 1	Enrollment in Hawaii Public and Private Schools
Table 2	Enrollment by District
Table 3	Special Needs Affecting Public School Students in Hawaii
Table 4	Average Attendance Rates by School Type
Table 5	Four-Year Graduation and Dropout Rates
Table 6	Ethnicity of Students and Teachers
Table 7	2014 Hawaii Content and Performance Standards Assessment Results
Table 8	Chapter 19 Charges Categorized by Type of Incident
Table 9	Administrative Staff as Proportion of Total Staff: Hawaii and Comparison States
Table 10	Expenditure per Pupil: Hawaii and Comparison States
Table 11	Hawaii and States with Similar Financial Resources
Table 12	Percent of State and Local Expenditures Supporting Public Education (K-12): Hawaii and Comparison States
Table 13	Percent of State and Local Expenditures Supporting Public Education (K-12) and Per Pupil Expenditures: All States

Table 1 Enrollment in Hawaii Public and Private Schools

	1994-95	1995-96	1996-97	1997-98	1998-99	1999-2000	2000-01	2001-02	2002-03	2003-04	2004-05	2005-06	2006-07	2007-08	2008-09	2009-10	2010-11	2011-12	2012-13	2013-14
Public																				
Elementary	105,598	107,254	107,979	108,197	107,046	105,509	104,253	103,216	101,375	99,829	99,132	98,552	97,383	97,272	98,180	99,789	100,470	103,336	105,396	107,920
Secondary	77,566	79,327	80,506	81,084	80,349	79,527	79,267	80,413	81,423	82,605	82,765	82,854	81,851	81,097	79,691	78,860	77,738	77,877	77,855	77,353
Total	183,164	186,581	188,485	189,281	187,395	185,036	183,520	183,629	182,798	182,434	181,897	181,406	179,234	178,369	177,871	178,649	178,208	181,213	183,251	185,273
Growth	3,288	3,417	1,904	796	-1,886	-2,359	-1,516	109	-831	-364	-537	-491	-2,172	-865	-498	778	-441	3,005	2,038	2,022
Growth Rate	1.8%	1.9%	1.0%	0.4%	-1.0%	-1.3%	-0.8%	0.1%	-0.5%	-0.2%	-0.3%	-0.3%	-1.2%	-0.5%	-0.3%	0.4%	-0.2%	1.7%	1.1%	1.1%
10 Year Change								5.4%	3.3%	1.4%	-0.7%	-2.8%	-4.9%	-5.8%	-5.1%	-3.5%	-2.9%	-1.3%	0.2%	1.6%
Department Schools	182,456	185,835	187,641	188,473	186,560	184,252	182,179	180,563	179,448	177,932	177,932	175,810	173,564	172,366	170,498	170,830	170,006	172,104	173,658	175,476
Percent of Total	84.2%		84.9%	85.0%	84.9%	84.5%	83.9%	83.3%	82.5%	81.8%	81.7%	81.2%	80.9%	80.4%	79.8%	80.0%	79.9%	79.9%	80.1%	80.4%
Charter Schools	708	746	844	808	835	784	1,341	3,066	3,350	4,502	5,167	5,596	5,678	6,003	7,373	7,819	8,202	9,109	9,593	9,797
No. schools	2	2	2	2	2	2	6	22	25	26	27	27	27	28	31	31	31	31	32	33
Percent of Total	0.3%		0.4%	0.4%	0.4%	0.4%	0.6%	1.4%	1.5%	2.1%	2.4%	2.6%	2.6%	2.8%	3.5%	3.7%	3.9%	4.2%	4.4%	4.5%
Private																				
Elementary	16,191	No Data	15,504	15,440	15,021	14,868	17,390	16,064	15,870	17,274	No Data	No Data	No Data	No Data	16,389	16,085	16,222	15,819	15,407	15,158
Secondary	17,343	No Data	17,046	17,126	17,337	18,194	16,304	17,162	18,945	17,724	No Data	No Data	No Data	No Data	19,326	18,760	18,437	18,313	18,203	17,951
Total	33,534	No Data	32,550	32,566	32,358	33,062	33,694	33,226	34,815	34,998	35,981	35,136	35,407	36,128	35,715	34,845	34,659	34,132	33,610	33,109
Growth Rate	-0.1%	No Data	n/a	0.0%	-0.6%	2.2%	1.9%	-1.4%	4.8%	0.5%	2.8%	-2.3%	0.8%	2.0%	-1.1%	-2.4%	-0.5%	-1.5%	-1.5%	-1.5%
Percent of Total	15.5%	No Data	14.7%	14.7%	14.7%	15.2%	15.5%	15.3%	16.0%	16.1%	16.5%	16.2%	16.5%	16.8%	16.7%	16.3%	16.3%	15.8%	15.5%	15.2%

Source: Hawaii State Department of Education: Office of Strategy, Innovation and Performance: Assessment and Accountability Branch: Accountability Section; Hawaii Association of Independent Schools.

Table 2 Enrollment by District

	Honolulu	Central	Leeward	Windward	Hawaii	Maui	Kauai
1989-90	34,052	35,239	30,019	19,244	23,745	17,312	9,427
1990-91	34,128	35,177	30,320	19,324	24,564	17,788	9,561
1991-92	33,978	35,593	31,066	19,494	25,472	18,379	10,109
1992-93	34,195	35,763	31,449	19,784	26,318	18,835	10,503
1993-94	34,597	35,985	32,126	19,785	29,946	19,527	10,826
1994-95	34,715	36,575	33,235	19,745	27,703	20,189	10,937
1995-96	35,098	36,436	34,721	19,994	28,083	20,992	11,176
1996-97	35,365	35,985	35,982	20,297	28,257	21,463	11,065
1997-98	35,354	35,538	37,071	19,980	28,508	21,712	11,039
1998-99	35,256	34,706	37,110	19,673	27,993	21,608	10,962
1999-2000	34,743	33,924	36,919	19,424	27,557	21,570	10,821
2000-01	34,217	33,505	37,152	18,985	27,233	21,645	10,697
2001-02	33,277	33,749	37,672	18,268	25,470	21,596	10,443
2002-03	32,800	33,566	38,250	18,019	24,969	21,488	10,263
2003-04	32,812	33,034	38,827	17,697	24,168	21,244	10,050
2004-05	32,454	32,866	39,409	17,243	24,049	20,738	9,876
2005-06	32,289	32,683	39,811	16,829	24,079	20,427	9,595
2006-07	31,604	32,222	39,734	16,225	24,063	20,167	9,458
2007-08	31,274	31,915	39,537	15,800	24,095	20,267	9,391
2008-09	30,989	31,889	38,574	15,335	23,972	20,297	9,364
2009-10	31,084	32,409	38,766	15,188	23,671	20,351	9,288
2010-11	30,968	32,498	38,739	14,766	23,325	20,430	9,207
2011-12	31,251	32,964	39,537	14,706	23,556	20,779	9,311
2012-13	31,289	33,318	40,286	15,036	23,180	21,119	9,430
2013-14	31,552	33,496	40,959	15,189	23,445	21,330	9,505
10 Year Growth	-1,260	462	2,132	-2,508	-723	86	-545
<u>Annual Growth Rates</u>							
1989-90	-1.4%	0.7%	1.2%	0.5%	3.8%	4.0%	2.4%
1990-91	0.2%	-0.2%	1.0%	0.4%	3.4%	2.7%	1.4%
1991-92	-0.4%	1.2%	2.5%	0.9%	3.7%	3.3%	5.7%
1992-93	0.6%	0.5%	1.2%	1.5%	3.3%	2.5%	3.9%
1993-94	1.2%	0.6%	2.2%	0.0%	13.8%	3.7%	3.1%
1994-95	0.3%	1.6%	3.5%	-0.2%	-7.5%	3.4%	1.0%
1995-96	1.1%	-0.4%	4.5%	1.3%	1.4%	4.0%	2.2%
1996-97	0.8%	-1.2%	3.6%	1.5%	0.6%	2.2%	-1.0%
1997-98	0.0%	-1.2%	3.0%	-1.6%	0.9%	1.2%	-0.2%
1998-99	-0.3%	-2.3%	0.1%	-1.5%	-1.8%	-0.5%	-0.7%
1999-2000	-1.5%	-2.3%	-0.5%	-1.3%	-1.6%	-0.2%	-1.3%
2000-01	-1.5%	-1.2%	0.6%	-2.3%	-1.2%	0.3%	-1.1%
2001-02	-2.7%	0.7%	1.4%	-3.8%	-6.5%	-0.2%	-2.4%
2002-03	-1.4%	-0.5%	1.5%	-1.4%	-2.0%	-0.5%	-1.7%
2003-04	0.0%	-1.6%	1.5%	-1.8%	-3.2%	-1.1%	-2.1%
2004-05	-1.1%	-0.5%	1.5%	-2.6%	-0.5%	-2.4%	-1.7%
2005-06	-0.5%	-0.6%	1.0%	-2.4%	0.1%	-1.5%	-2.8%
2006-07	-2.1%	-1.4%	-0.2%	-3.6%	-0.1%	-1.3%	-1.4%
2007-08	-1.0%	-1.0%	-0.5%	-2.6%	0.1%	0.5%	-0.7%
2008-09	-0.9%	-0.1%	-2.4%	-2.9%	-0.5%	0.1%	-0.3%
2009-10	0.3%	1.6%	0.5%	-1.0%	-1.3%	0.3%	-0.8%
2010-11	-0.4%	0.3%	-0.1%	-2.8%	-1.5%	0.4%	-0.9%
2011-12	0.9%	1.4%	2.1%	-0.4%	1.0%	1.7%	1.1%
2012-13	0.1%	1.1%	1.9%	2.2%	-1.6%	1.6%	1.3%
2013-14	0.8%	0.5%	1.7%	1.0%	1.1%	1.0%	0.8%
10 Year Growth Rate	-3.8%	1.4%	5.5%	-14.2%	-3.0%	0.4%	-5.4%

Source: Hawaii State Department of Education: Office of Strategy, Innovation and Performance: Assessment and Accountability Branch: Accountability Section.

Table 3 Special Needs Affecting Public School Students in Hawaii

SY 2013-14*		
	Headcount	Percent
English as a Second Language Only	3,393	2%
Special Education Only	6,245	3%
Economically Disadvantaged Only	74,585	40%
Section 504 Only	1,528	1%
Multiple Special Needs	24,417	13%
No Special Needs	78,187	42%
Total	188,355	100%

* December 2013 student enrollment

Source: *Hawaii State Department of Education: Office of Strategy, Innovation and Performance: Assessment and Accountability Branch: Accountability Section.*

Table 4 Average Attendance Rates by School Type**SY 1998-99 TO SY 2013-14**

School Year	Elementary	Middle/ Intermediate	High	Multi-Grade	Charter
1998-99	94.7%	93.9%	90.8%	90.1%	95.4%
1999-2000	94.7%	94.1%	90.6%	89.8%	95.2%
2000-01	94.6%	94.1%	91.4%	89.6%	92.5%
2001-02	94.5%	94.0%	91.4%	89.8%	92.1%
2002-03	94.6%	93.9%	91.3%	90.9%	92.8%
2003-04	94.8%	94.0%	91.4%	90.9%	93.7%
2004-05	94.2%	94.1%	91.4%	91.1%	92.6%
2005-06	94.2%	93.8%	91.4%	90.7%	92.9%
2006-07	94.4%	94.0%	91.2%	90.4%	93.8%
2007-08	94.4%	93.9%	90.4%	89.6%	93.0%
2008-09	94.5%	93.9%	89.9%	90.8%	93.6%
2009-10	94.9%	94.5%	90.8%	91.4%	94.3%
2010-11	94.7%	94.4%	92.4%	92.4%	94.1%
2011-12	94.6%	94.5%	92.3%	93.1%	94.1%
2012-13	94.2%	94.4%	92.1%	94.2%	93.3%
2013-14	94.5%	94.6%	92.4%	92.5%	93.5%

Source: Hawaii State Department of Education: Office of Strategy, Innovation and Performance: Assessment and Accountability Branch: Accountability Section.

Table 5 Four-Year Graduation and Dropout Rates

9th grade School Year	4th Year	Graduation Rate	Dropout Rate	Others *
2010-11	2013-14	81.7%	14.8%	3.5%
2009-10	2012-13	82.4%	14.6%	3.0%
2008-09	2011-12	82.2%	15.8%	2.0%
2007-08	2010-11	80.1%	16.4%	3.5%
2006-07	2009-10	79.3%	16.6%	4.1%
2005-06	2008-09	79.9%	15.6%	4.5%
2004-05	2007-08	79.9%	16.0%	4.1%
2003-04	2006-07	78.9%	16.5%	4.6%
2002-03	2005-06	79.2%	15.7%	5.1%
2001-02	2004-05	79.5%	14.9%	5.6%
2000-01	2003-04	79.8%	15.1%	5.1%
1999-2000	2002-03	79.8%	14.3%	5.9%
1998-99	2001-02	78.9%	14.8%	6.3%

* Percent of high school completers who received a special education certificate of completion in lieu of a diploma and students who have been attending school but did not graduate in the four-year time frame.

Note: Table 5 has changed since the *2006 Superintendent's Annual Report*. "Estimated Cohort Dropout Rates" previously reported in earlier reports have been replaced with rate data that are a result of tracking first-time 9th graders over four years. This methodology produces more accurate high school graduation and dropout rates.

Source: *Hawaii State Department of Education: Office of Strategy, Innovation and Performance: Assessment and Accountability Branch: Accountability Section.*

Table 6 Ethnicity of Students and Teachers

Students 2013-14		
Ethnicity	Students	Percent
Black	5,398	2.9%
Hispanic	6,950	3.8%
Native American	1,177	0.6%
Native Hawaiian	48,906	26.4%
Chinese	5,959	3.2%
Filipino	41,178	22.2%
Indo-Chinese	2,262	1.2%
Japanese	17,084	9.2%
Korean	2,148	1.2%
Other Asian	836	0.5%
Asian two or more	202	0.1%
Guamanian/Chamorro	534	0.3%
Micronesian	7,441	4.0%
Samoan	6,537	3.5%
Tongan	1,358	0.7%
Other Pacific Islander	958	0.5%
Pacific Islander two or more	22	0.0%
White	30,716	16.6%
Portuguese	2,908	1.6%
White two or more	5	0.0%
Multiple, two or more	2,694	1.5%
TOTAL	185,273	100.0%

Teachers 2012-13		
Ethnicity	Teachers	Percent
African-American	79	0.7%
White	2,637	23.4%
Chinese	414	3.7%
Filipino	680	6.0%
Hawaiian/Part-Hawaiian	1,042	9.2%
Hispanic	39	0.3%
Japanese	2,936	26.0%
Korean	103	0.9%
Native American	0	0.0%
Samoan	46	0.4%
Other	3,304	29.3%
TOTAL	11,280	100.0%

Source: Hawaii State Department of Education: Office of Strategy, Innovation and Performance: Assessment and Accountability Branch: Accountability Section.

Table 7 2014 Hawaii Content and Performance Standards Assessment Results

Grade	Proficiency Status				Number Tested
	Well Below	Approaching	Meets	Exceeds	
3 Reading	9.2%	25.5%	25.2%	40.1%	15,238
Math	14.0%	22.4%	40.6%	23.1%	15,227
4 Reading	8.7%	20.4%	30.2%	40.7%	14,743
Math	12.0%	24.8%	41.5%	21.8%	14,710
Science	6.9%	39.4%	42.2%	11.3%	14,783
5 Reading	8.7%	22.0%	34.4%	34.9%	14,586
Math	12.3%	22.1%	40.5%	25.1%	14,583
6 Reading	7.4%	22.2%	41.0%	29.5%	14,007
Math	19.0%	25.3%	33.2%	22.5%	13,996
7 Reading	7.6%	21.9%	45.1%	25.4%	13,052
Math	17.6%	26.5%	34.6%	21.3%	13,035
8 Reading	8.5%	19.4%	38.7%	33.3%	13,222
Math	16.9%	23.3%	39.4%	20.5%	13,217
Science	21.6%	43.2%	27.8%	7.3%	13,319
10 Reading	12.4%	19.4%	49.6%	18.5%	12,375
Math	27.7%	29.3%	30.9%	12.2%	12,374
HS Science	27.8%	41.9%	24.7%	5.4%	11,410
State Reading	8.8%	21.6%	37.2%	32.2%	97,223
Math	16.7%	24.6%	37.4%	21.1%	97,142
Science	18.1%	41.4%	32.1%	8.2%	39,512

Source: Hawaii State Department of Education: Office of Strategy, Innovation and Performance: Assessment and Accountability
Branch: Assessment Section.

Table 8 Chapter 19 Charges Categorized by Type of Incident

Year	Violence		Property		Illicit Substances		Attendance		Order		Total Students	Enrollment
	Incidents	Students	Incidents	Students	Incidents	Students	Incidents	Students	Incidents	Students		
1999-2000	2,956	1,631	918	610	2,826	1,597	1	1	12,580	6,851	10,690	185,036
2000-01	2,754	1,531	841	537	2,538	1,435	0	0	11,356	6,473	9,976	183,520
2001-02	2,710	1,820	731	535	1,958	1,356	423	260	7,523	4,979	8,950	183,629
2002-03	3,412	2,837	853	790	2,246	1,804	571	479	10,064	6,764	10,169	182,798
2003-04	2,857	2,594	775	723	1,854	1,616	619	527	7,465	5,456	9,024	182,434
2004-05	3,022	2,565	858	797	1,821	1,603	723	564	7,647	5,707	9,297	181,897
2005-06	3,350	2,762	867	820	1,604	1,440	722	597	7,999	5,920	9,580	181,406
2006-07	3,528	2,894	1,172	1,077	1,546	1,386	1,092	870	8,828	6,330	9,999	179,234
2007-08	3,375	2,766	1,022	952	1,462	1,331	745	625	7,976	5,783	9,475	178,369
2008-09	3,224	2,624	993	912	1,668	1,514	833	703	7,767	5,669	9,383	177,871
2009-10	2,541	2,153	819	771	1,357	1,257	494	428	6,285	4,789	7,879	178,649
2010-11	4,731	3,936	880	819	1,348	1,228	579	497	4,820	3,756	8,441	178,208
2011-12	4,740	3,874	945	864	1,273	1,151	473	411	5,002	3,765	8,271	181,213
2012-13	4,529	3,642	847	796	1,139	1,055	468	390	4,431	3,373	7,660	183,251
2013-14	4,177	3,353	667	617	1,073	988	370	315	3,897	2,899	6,794	185,273

Safety Categories Derived from Suspension Charges:

<u>Category</u>	<u>Charges Included</u>
Violence	Assault (A01), Extortion (A07), Robbery (A11), Sexual Offenses (A12), Terroristic Threatening (A13), Dangerous Weapons (A15), Firemans (A16), Harassment (B04)
Property	Property Damage (A10), Burglary (A14), Theft (B09), Trespassing (B10)
Illicit Substances	Marijuana or Concentrate (A21), Drug Paraphernalia (A23), Alcohol Use or Possession (A24), Smoking/Tobacco Substances (C04), Contraband (D01), Illicit Substances (A22)
Attendance	Class Cutting (C01), Leaving Campus without Permission (C03)
Order	Disorderly Conduct (B02), Gambling (B03), False Alarm (B17), Insubordination (C02), Laser Pen or Pointer (C06), Other Prohibited Conduct (D02)

Source: Hawaii State Department of Education: Office of Strategy, Innovation and Performance: Assessment and Accountability Branch: Accountability Section.

Table 9 Administrative Staff as Proportion of Total Staff: Hawaii and Comparison States

	Hawaii	Delaware	Nebraska	Rhode Island	Wyoming	U. S. Average
1994-95	2.7%	4.0%	3.6%	3.1%	2.1%	4.0%
1995-96	2.4%	4.0%	3.4%	3.5%	2.3%	3.9%
1996-97	2.3%	4.1%	3.7%	3.3%	3.2%	4.1%
1997-98	2.3%	4.1%	3.6%	3.4%	3.0%	4.0%
1998-99	2.2%	4.0%	3.5%	3.1%	3.8%	3.8%
1999-2000	2.2%	3.3%	3.5%	3.7%	4.1%	3.9%
2000-01	2.1%	4.6%	3.2%	3.6%	4.2%	3.9%
2001-02	2.2%	4.2%	3.5%	3.7%	4.6%	4.0%
2002-03	2.4%	4.2%	3.4%	3.6%	4.6%	4.0%
2003-04	2.3%	4.2%	3.5%	3.1%	4.7%	4.1%
2004-05	2.2%	4.2%	3.3%	2.2%	4.8%	3.9%
2005-06	2.4%	3.8%	3.4%	1.9%	4.9%	3.8%
2006-07	2.3%	4.3%	3.3%	2.1%	4.7%	3.8%
2007-08	2.5%	4.3%	3.3%	2.6%	4.9%	3.9%
2008-09	2.7%	4.5%	3.6%	2.8%	5.0%	3.1%
2009-10	3.7%	4.1%	3.5%	3.1%	5.0%	4.0%
2010-11	3.7%	5.0%	3.7%	3.1%	4.6%	4.0%
2011-12	3.6%	0.9%	3.6%	3.2%	5.0%	4.1%

Note: Data for SY 2011-12 were the most current available at the time of publication.

Source: *Digest of Education Statistics, 2013, National Center for Education Statistics, USDOE.*

Table 10 Expenditure per Pupil: Hawaii and Comparison States

Year	Hawaii	Delaware	Nebraska	Rhode Island	Wyoming	U. S. Average	HI Difference from U.S. Average by Number and Percent	
1992-93	\$5,332	\$5,753	\$5,064	\$6,501	\$5,462	\$5,160	\$172	3.3%
1993-94	\$5,533	\$6,101	\$5,310	\$6,797	\$5,534	\$5,327	\$206	3.9%
1994-95	\$5,597	\$6,502	\$5,555	\$7,126	\$5,753	\$5,529	\$68	1.2%
1995-96	\$5,560	\$6,696	\$5,688	\$7,304	\$5,826	\$5,689	(\$129)	-2.3%
1996-97	\$5,633	\$7,135	\$5,848	\$7,612	\$5,971	\$5,923	(\$290)	-4.9%
1997-98	\$5,858	\$7,420	\$5,958	\$7,928	\$6,218	\$6,189	(\$331)	-5.3%
1998-99	\$6,081	\$7,706	\$6,256	\$8,294	\$6,842	\$6,508	(\$427)	-6.6%
1999-2000	\$6,530	\$8,310	\$6,683	\$8,904	\$7,425	\$6,912	(\$382)	-5.5%
2000-01	\$6,596	\$8,958	\$7,223	\$9,315	\$7,835	\$7,380	(\$784)	-10.6%
2001-02	\$7,306	\$9,284	\$7,741	\$9,703	\$8,645	\$7,727	(\$421)	-5.4%
2002-03	\$8,100	\$9,693	\$8,074	\$10,349	\$8,985	\$8,011	\$89	1.1%
2003-04	\$8,533	\$10,212	\$8,452	\$11,078	\$9,308	\$8,310	\$223	2.7%
2004-05	\$8,997	\$10,911	\$8,794	\$11,667	\$10,190	\$8,701	\$296	3.4%
2005-06	\$9,876	\$11,621	\$9,324	\$12,609	\$11,437	\$9,154	\$722	7.9%
2006-07	\$11,060	\$11,760	\$10,068	\$13,453	\$13,266	\$9,683	\$1,377	14.2%
2007-08	\$11,800	\$12,153	\$10,565	\$14,459	\$13,856	\$10,297	\$1,503	14.6%
2008-09	\$12,400	\$12,109	\$10,486	\$14,719	\$14,628	\$10,591	\$1,809	17.1%
2009-10	\$11,855	\$12,222	\$11,339	\$14,723	\$15,232	\$10,636	\$1,219	11.5%
2010-11	\$11,924	\$12,467	\$11,540	\$14,948	\$15,815	\$10,658	\$1,266	11.9%

Note: Data for SY 2010-11 were the most current available at the time of publication.

Source: *Digest of Education Statistics, 2013, National Center for Education Statistics, USDOE.*

Table 11 Hawaii and States with Similar Financial Resources

	2012 Population	2011-12 K-12 Enrollment	2012 Per Capita Income
Hawaii	1,390,090	182,706	\$40,483
Delaware	917,053	128,946	\$39,360
Nebraska	1,855,350	301,296	\$41,454
Rhode Island	1,050,304	142,854	\$41,592
Wyoming	576,626	90,099	\$46,269
United States	313,873,685	49,521,669	\$39,414

Note: Enrollment figures for SY 2011-12 were the most current available at the time of publication.

Source: *Digest of Education Statistics, 2013*, National Center for Education Statistics, USDOE;
U.S. Department of Commerce, Bureau of Economic Analysis.

Table 12 Percent of State and Local Expenditures Supporting Public Education (K-12): Hawaii and Comparison States

	1989-90	1990-91	1991-92	1992-93	1994-95	1995-96	1997-98	1998-99	1999-2000	2001-02	2003-04	2004-05	2005-06	2007-08	2008-09	2009-10	2010-11
Hawaii	15.5%	15.0%	13.5%	13.1%	14.3%	14.5%	14.8%	15.5%	15.7%	17.4%	19.3%	18.5%	19.7%	19.2%	18.6%	17.1%	15.9%
Delaware	21.4%	20.6%	21.3%	22.2%	21.6%	21.2%	21.9%	20.8%	21.4%	22.5%	21.8%	21.3%	21.7%	21.3%	21.6%	20.7%	20.2%
Nebraska	26.5%	27.2%	26.9%	27.7%	27.7%	27.8%	25.8%	25.5%	24.6%	25.4%	24.0%	23.7%	23.3%	23.4%	24.7%	24.8%	24.7%
Rhode Island	22.0%	21.8%	19.8%	20.7%	21.4%	22.4%	24.4%	24.1%	24.2%	23.3%	23.6%	22.9%	23.7%	24.2%	24.3%	23.9%	23.9%
Wyoming	25.1%	24.9%	25.1%	24.7%	23.9%	24.2%	23.6%	23.0%	22.7%	22.2%	20.9%	20.3%	21.2%	22.2%	22.1%	22.1%	21.7%
U. S. Average	24.3%	24.1%	23.5%	23.4%	23.1%	23.5%	24.2%	24.3%	24.3%	23.7%	23.8%	23.6%	23.6%	23.6%	23.3%	22.6%	21.9%

Note: No data reported by NCES for School Years 1993-94, 1996-97, 2000-01, 2002-03, or 2006-07. Data for SY 2010-11 were the most current available at the time of publication.

Source: *Digest of Education Statistics, 2013, National Center for Education Statistics, USDOE.*

Table 13 Percent of State and Local Expenditures Supporting Public Education (K-12) and Per Pupil Expenditures: All States

	2005-06 % of Expenditure Supporting Public Schools	2006-07 % of Expenditure Supporting Public Schools	2007-08 % of Expenditure Supporting Public Schools	2008-09 % of Expenditure Supporting Public Schools	2009-10 % of Expenditure Supporting Public Schools	2010-11 % of Expenditure Supporting Public Schools	2005-06 Per Pupil Expenditure	2006-07 Per Pupil Expenditure	2007-08 Per Pupil Expenditure	2008-09 Per Pupil Expenditure	2009-10 Per Pupil Expenditure	2010-11 Per Pupil Expenditure
United States	23.6		23.6	23.3	22.6	21.9	\$9,145	\$9,679	\$10,297	\$10,540	\$10,636	\$10,658
Alabama	21.3	No Data Available 2006-07	23.7	23.1	21.8	16.2	\$7,683	\$8,398	\$9,197	\$8,964	\$8,907	\$8,726
Alaska	19.2		19.4	18.5	18.6	19.2	\$11,476	\$12,324	\$14,641	\$15,363	\$15,829	\$16,663
Arizona	21.6		21.2	20.7	19.3	18.9	\$6,515	\$7,316	\$7,727	\$8,022	\$7,870	\$7,782
Arkansas	24.9		24.9	26.4	26.7	25.8	\$8,030	\$8,391	\$8,677	\$8,854	\$9,281	\$9,496
California	21.8		21.1	20.3	19.2	17.9	\$8,301	\$8,952	\$9,706	\$9,503	\$9,300	\$9,146
Colorado	24.1		23.7	22.5	20.8	19.8	\$8,166	\$8,286	\$9,152	\$8,782	\$8,926	\$8,786
Connecticut	26.6		26.9	26.3	26.1	25.6	\$13,072	\$13,659	\$14,610	\$15,353	\$15,698	\$16,224
Delaware	21.7		21.3	21.6	20.7	20.2	\$11,621	\$11,760	\$12,153	\$12,109	\$12,222	\$12,467
District of Columbia	17.1		19.6	20.6	20.6	20.9	\$13,752	\$15,511	\$16,353	\$19,698	\$20,910	\$20,793
Florida	21.2		22.0	20.4	19.4	19.1	\$7,812	\$8,567	\$9,084	\$8,867	\$8,863	\$9,030
Georgia	28.4		28.5	29.0	27.3	26.4	\$8,595	\$9,102	\$9,718	\$9,649	\$9,432	\$9,259
Hawaii	19.7		19.2	18.6	17.1	15.9	\$9,876	\$11,316	\$11,800	\$12,400	\$11,855	\$11,924
Idaho	22.0		19.9	19.8	19.7	18.1	\$6,469	\$6,648	\$6,951	\$7,118	\$7,100	\$6,821
Illinois	24.6		23.9	24.6	23.7	23.5	\$9,113	\$9,596	\$10,353	\$11,097	\$11,739	\$11,742
Indiana	24.5		21.8	22.7	22.5	21.2	\$8,929	\$9,080	\$8,867	\$9,254	\$9,479	\$9,251
Iowa	22.6		22.5	21.9	22.0	21.7	\$8,355	\$8,791	\$9,520	\$9,704	\$9,748	\$9,795
Kansas	22.8		22.8	24.3	24.2	22.9	\$8,640	\$9,243	\$9,883	\$10,204	\$9,972	\$9,802
Kentucky	20.5		21.5	20.8	20.7	20.9	\$7,668	\$7,941	\$8,740	\$8,786	\$8,957	\$9,228
Louisiana	19.6		18.2	19.3	18.7	19.1	\$8,486	\$8,937	\$10,006	\$10,625	\$10,701	\$10,799
Maine	21.4		22.1	21.4	22.2	21.5	\$10,841	\$11,644	\$11,761	\$12,183	\$12,525	\$12,576
Maryland	24.7		25.5	24.4	24.4	24.1	\$10,909	\$11,989	\$13,235	\$13,737	\$14,007	\$14,123
Massachusetts	22.1		22.1	22.1	21.7	21.2	\$12,087	\$12,784	\$13,667	\$14,534	\$13,956	\$14,285
Michigan	25.9		24.9	24.8	24.3	23.8	\$9,575	\$9,876	\$10,075	\$10,373	\$10,447	\$10,577
Minnesota	23.0		22.0	22.7	21.1	21.1	\$9,159	\$9,589	\$10,048	\$10,983	\$10,665	\$10,674
Mississippi	20.8		19.1	19.5	18.7	17.9	\$7,173	\$7,459	\$7,890	\$8,064	\$8,104	\$7,926
Missouri	24.1		24.3	24.3	23.3	22.7	\$8,273	\$8,848	\$9,532	\$9,617	\$9,721	\$9,461
Montana	21.7		21.2	21.4	20.1	20.0	\$8,626	\$9,191	\$9,786	\$10,120	\$10,565	\$10,719
Nebraska	23.3		23.4	24.7	24.8	24.7	\$9,324	\$10,068	\$10,565	\$10,846	\$11,339	\$11,540
Nevada	23.7		25.4	22.8	22.5	21.5	\$7,177	\$7,796	\$8,187	\$8,321	\$8,376	\$8,411
New Hampshire	28.1		27.9	27.1	26.4	27.0	\$10,396	\$11,036	\$11,951	\$12,583	\$13,072	\$13,548
New Jersey	30.8		30.5	30.5	29.9	28.7	\$14,954	\$16,163	\$17,620	\$16,973	\$17,379	\$16,855
New Mexico	20.6		20.6	21.1	19.3	20.9	\$8,354	\$8,849	\$9,291	\$9,648	\$9,621	\$9,250
New York	23.3		24.1	24.4	24.1	23.6	\$14,615	\$15,546	\$16,794	\$17,746	\$18,167	\$18,834
North Carolina	20.6		21.3	22.2	21.1	19.5	\$7,396	\$7,878	\$7,798	\$8,463	\$8,225	\$8,267
North Dakota	21.0		20.0	19.8	19.9	19.2	\$8,728	\$8,671	\$9,324	\$9,802	\$10,519	\$10,898
Ohio	24.2		24.5	24.4	24.1	23.4	\$9,692	\$9,937	\$10,340	\$10,669	\$11,224	\$11,395
Oklahoma	24.1		23.3	23.2	22.5	21.4	\$6,941	\$7,430	\$7,683	\$7,878	\$7,929	\$7,631
Oregon	20.3		21.7	21.2	19.6	18.9	\$8,645	\$8,958	\$9,565	\$9,611	\$9,268	\$9,516
Pennsylvania	24.3		25.0	24.6	23.3	22.7	\$10,723	\$10,905	\$11,741	\$12,299	\$12,729	\$13,096
Rhode Island	23.7		24.2	24.3	23.9	23.9	\$12,609	\$13,453	\$14,459	\$14,719	\$14,723	\$14,948
South Carolina	23.9		23.5	23.9	22.6	21.3	\$8,120	\$8,507	\$9,060	\$9,228	\$9,080	\$8,903
South Dakota	21.7		21.6	21.2	20.5	21.2	\$7,775	\$8,064	\$8,535	\$8,543	\$9,020	\$8,931
Tennessee	21.5		22.1	21.1	21.1	20.5	\$7,004	\$7,129	\$7,820	\$7,992	\$8,117	\$8,484
Texas	27.9		27.9	27.8	26.6	25.3	\$7,480	\$7,850	\$8,350	\$8,562	\$8,788	\$8,685
Utah	21.1		22.6	21.9	20.3	20.1	\$5,464	\$5,709	\$5,978	\$6,612	\$6,452	\$6,326
Vermont	25.3		25.4	25.2	25.0	23.8	\$12,805	\$13,629	\$14,421	\$15,096	\$15,666	\$14,707
Virginia	26.1		26.7	25.3	25.8	23.4	\$9,452	\$10,214	\$10,664	\$10,928	\$10,594	\$10,363
Washington	21.1		21.0	20.9	20.0	19.8	\$7,984	\$8,524	\$9,058	\$9,585	\$9,497	\$9,619
West Virginia	22.8		22.7	22.2	23.4	22.9	\$9,440	\$9,727	\$10,059	\$10,606	\$11,774	\$11,978
Wisconsin	23.7		23.8	23.2	23.0	22.8	\$9,993	\$10,372	\$10,791	\$11,183	\$11,507	\$11,946
Wyoming	21.2		22.2	22.1	22.1	21.7	\$11,437	\$13,266	\$13,856	\$14,628	\$15,232	\$15,815

Note: Data for SY 2010-11 were the most current available at the time of publication.

Source: Digest of Education Statistics, 2013, National Center for Education Statistics, USDOE.