

2014 Fall

Campbell Complex Evaluation 2013-14



In 2013-14, the Campbell Complex school district was awarded one of sixteen 21st CCLC grants



in Hawaii to serve the students in ten of their schools: Ewa Beach Elementary School, Ewa Elementary School, Ewa Makai Middle School, Holomua Elementary School, Iroquois Point Elementary School, James Campbell High School, Kaimiloa Elementary School, Keone'ula Elementary School, and Pohakea Elementary School.

This report summarizes the data provided in OSTLMS for the 2013-2014 program year. This summary describes the characteristics of the Campbell Complex programs in alignment with the federal and State of Hawaii priorities of the program which include:

- Academic Enrichment
- Enhancement
- Family Programming

Findings:

1. Student Participation:

- a. The Campbell Complex program serves 991 students.
- b. 41 % of the students who attended the program became regular program participants.

2. Academic Progress:

- a. The majority of regular program participants who maintained or improved their classroom academic and behavior performance greatly out performed those who did not.
- b. The majority of the established objectives were either met or within a marginal percentage of completion.



Introduction

The Campbell Complex's 21st Century Community Learning Centers (21st CCLC) program is funded by the U.S. Department of Education (USDE) under Title IV, Part B, of the *No Child Left Behind Act* (NCLB), Public Law 107-110. The purpose of the 21st CCLC is to offer students and their families opportunities for academic and cultural enrichment and to assist students in meeting state academic standards in core subjects.

Federal legislation requires a comprehensive evaluation of the effectiveness of the state's 21st CCLC. The Campbell Complex contracted with Creating Change, Inc. to fulfill this legislative requirement. This report reviews data from Creating Change's OSTLMS and achievement data provided from Campbell Complex 21st CCLC grantees and centers, identifies their progress on the Department of Education's performance objectives, and proposes recommendations for the next steps in the program's continuous improvement. This evaluation summarizes information on populations served, services provided, and program outputs to establish if the Campbell Complex is meeting the performance measures set by Campbell Complex grant, the state and the USDE.

The report is divided into seven sections:

- Section I, *Introduction*, providing a general overview
- Section II, *Background*, describes the legislation, funding structure, grant competition, monitoring strategies, program designs and technical assistance of the Campbell Complex's 21st Century Community Learning Centers Program.
- Section III, *Student Characteristics*, provides an extensive review of the students that were targeted and involved in the 21st CCLC program.
- Section III, *Program Characteristics*, provides a description of the grantees' general characteristics and activities.
- Section IV, *Student Performance*, describes various performance measures reviewed in relation with the Campbell Complex 21st CCLC program.
- Section V, *Findings*, presents the data on Campbell Complex 21st CCLC centers' progress on the Campbell Complex's performance objectives.
- Section VI, *Recommendations*, suggests the next steps for the Campbell Complex 21st CCLC in terms of future goals and continuous improvement.



State of Hawaii

Purpose of 21st Century Community Learning Centers Programs in Hawaii

The purpose of the program is to establish or expand community learning centers that provide students with academic enrichment opportunities along with activities designed to complement the students' regular academic program. Community learning centers must also offer families of these students' literacy and related educational development. Centers - which can be located in elementary or secondary schools or other similarly accessible facilities - provide a range of high-quality services to support student learning and development, including tutoring and mentoring, homework help, academic enrichment (such as hands-on science or technology programs), and community service opportunities, as well as music, arts, sports and cultural activities. At the same time, centers help working parents by providing a safe environment for students during non-school hours or periods when school is not in session.

Objectives:

1. Participants in 21st CCLC programs will demonstrate educational and social benefits and exhibit positive behavioral changes.
2. 21st CCLC will offer a range of high-quality educational, developmental, and recreational services.
3. 21st CCLC will serve children and community members with the greatest needs for expanded learning opportunities.

Section I. Background

Legislation

The original purpose of the 21st Century Community Learning Centers (21st CCLC), first authorized as a national program in 1996, was to provide grants to schools or local education agencies for the establishment of community centers to keep children safe during after-school hours. The program was reauthorized under the No Child Left Behind Act of 2001 with important modifications. First, the Act increases the emphasis on academics and "whenever possible, the use of activities that are based on rigorous scientific research." Second, the Act transfers the program administration



from the Federal to State level, expands program eligibility to community-based organizations, and underscores the role of program evaluation and accountability.

Funding

The primary funding source for the 21st Century Community Learning Centers Programs is the Federal government, U.S. Department of Education, through a grant of more than \$5,000,000 to the State of Hawaii. Some schools received supplementary support from other sources. Most often, the school that the 21st CCLC served provided some additional support in the form of transportation and/or other funding or in-kind services. Many programs received funding for snacks through a grant from the U.S. Department of Agriculture. Some schools use other title funds to help support their afterschool programs.

Department of Education Performance Measures

The program goal established by the US Department of Education is: *To establish community learning centers that help students in high-poverty, low-performing schools meet academic achievement standards; to offer a broad array of additional services designed to complement the regular academic program; and to offer families of students' opportunities for educational development.* Objective 1 of 3 is: Participants in 21st Century Community Learning Center will demonstrate educational and social benefits and exhibit positive behavioral changes. Objective 2 of 3 is: 21st Century Community Learning Centers will offer high-quality enrichment opportunities that positively affect student outcomes such as school attendance and academic performance, and result in decreased disciplinary actions or other adverse behaviors. Objective 3 of 3 is: Improve the operational efficiency of the program. This evaluation is concerned with objectives one and two.

Program Description

A. Origin of the program

Where was the program implemented? What sort of community? How many people did it affect?

During the grant application round, Campbell Complex Area submitted a 21st Century Community Learning Centers Grant application. In the Fall of 2011, Campbell Complex Area was awarded the grant.

Continuance of the grant began in summer of 2012, in ten schools: Ewa Beach Elementary School, Ewa Elementary School, Ewa Makai Middle School, Holomua Elementary School, Iroquois Point Elementary School, James Campbell High School, Kaimiloa Elementary School, Keone'ula Elementary School, and Pohakea Elementary School. All ten are Title I schools. Approximately 991 students total participated in these programs.



The program provides intensive academic support, engaging enrichment activities, and family involvement activities in a safe and supervised after-school environment dedicated to boosting student success in school.

B. Goals of the program:

What was the program designed to accomplish?

The program was designed to deliver after-school, intersession, and summer support to students at three Title I schools.

What goals or objectives were set? What was their order of priority, if any?

- 4 performance goals were established to measure progress as follows:
- (1) Increase the number of students meeting Reading and Math standards
 - (2) Increase student engagement through enrichment activities that focus on critical thinking and inquiry.
 - (3) Expand an after school program to integrate a range of content areas that motivate and engage students in the learning process.
 - (4) Provide opportunities for parents to connect to their child's learning experience through a range of activities and workshops.

C. Clients involved in the program:

What are the characteristics of the intended clients of the program (e.g., age, socioeconomic status, experience, special needs, and ability level)?

The Table below provides demographic characteristics of program students.

| Type | Ewa Beach Elementary | Ewa Elementary | Ewa Makai Middle | Holomua Elementary | Ilima Intermediate School | Iroquois Point Elementary | James Campbell High School | Kaimiloa Elementary | Keone'ula Elementary | Pohakea Elementary School |
|---------------------|----------------------|----------------|------------------|--------------------|---------------------------|---------------------------|----------------------------|---------------------|----------------------|---------------------------|
| Enrollment | 98 | 67 | 55 | 39 | 115 | 124 | 33 | 236 | 107 | 117 |
| Special Education % | 1.02 % | 0.00 % | 0.00 % | 0.00 % | 15.65 % | 5.65 % | 15.15 % | 2.12 % | 0.00 % | 0.85 % |
| ELL % | 3.06 % | 0.00 % | 9.09 % | 0.00 % | 12.17 % | 8.06 % | 54.55 % | 11.86 % | 0.00 % | 5.98 % |
| Attendance Rate | 83.31 % | 100.00 % | 63.65 % | 71.00 % | 74.51 % | 73.51 % | 45.03 % | 91.37 % | 86.76 % | 90.18 % |



D. Characteristics of the program materials and resources:**How was the program administered?**

A Project Director from the Campbell Complex Area office served as the administrator for the program. He was assisted by a Project Coordinator from the same office. The Complex Area Business Manager and Office Assistant II supported the Project Director in fiscal matters (e.g., payroll, contracts, purchasing).

E. Staff and others involved in the program:**How many specific personnel such as administrators, consultants, teachers, specialists, volunteers or others were active in the program? What roles did they assume?**

Program staff included 71 personnel at the Complex Area level and school sites as follows:

| Title | School Year Paid | School Year Volunteer | Summer Program Paid | Summer Program Volunteer |
|--|------------------|-----------------------|---------------------|--------------------------|
| School-day teachers (whether in host school or other school; include former and substitute teachers) | 43 | 0 | 50 | 0 |
| College students | 0 | 0 | 0 | 0 |
| High school students | 0 | 19 | 0 | 0 |
| Parents | 0 | 0 | 0 | 0 |
| Center Administrators/Coordinators | 6 | 0 | 6 | 0 |
| Other nonschool-day staff with some or no college | 3 | 0 | 0 | 0 |
| Youth development workers/other nonschool-day staff with a college degree or higher | 0 | 0 | 0 | 0 |
| Other community members (e.g., business mentors, senior citizens, clergy) | 0 | 0 | 0 | 0 |
| Other nonteaching school staff (librarians, guidance counselors, aides, etc.) | 0 | 0 | 3 | 0 |
| Others | 0 | 0 | 0 | 0 |



How much time (per week, month, or year) did staff devote to the program?

The Campbell Complex operated the following programs:

- **Ewa Beach Elementary School** operated a program for 1.5 hours a day, 3 days a week, for a total of 27 weeks. Their intersession program was held 4 hours a day, 5 days a week, for 4 weeks.
- **Ewa Elementary School** operated a program for 1.5 hours a day, 2 days a week, for a total of 9 weeks. Their intersession program was held 4 hours a day, 5 days a week, for 2 weeks.
- **Ewa Makai Middle School** operated a program for 3 hours a day, 3 days a week, for a total of 34 weeks.
- **Holomua Elementary School** operated a program for 1.5 hours a day, 4 days a week, for a total of 32 weeks.
- **Ilima Intermediate School** operated a program for 1.5 hours a day, 4 days a week, for a total of 28 weeks. Their intersession program was held 3 hours a day, 5 days a week, for 4 weeks.
- **Iroquois Point Elementary School** operated a program for 1.5 hours a day, 3 days a week, for a total of 18 weeks. Their intersession program was held 3 hours a day, 5 days a week, for 5 weeks.
- **James Campbell High School** operated a program for 2 hours a day, 5 days a week, for a total of 23 weeks.
- **Kaimiloa Elementary School** operated a program for 2 hours a day, 5 days a week, for a total of 22 weeks. Their intersession program was held 2 hours a day, 5 days a week, for 22 weeks.
- **Keone'ula Elementary School** operated an intersession program for 3 hours a day, 5 days a week, for 4 weeks.
- **Pohakea Elementary School** operated a program for 1.5 hours a day, 3 days a week, for a total of 23 weeks. Their intersession program was held 4 hours a day, 5 days a week, for 4.5 weeks.

How was the program monitored?

Information from this program was entered into OSTLMS through the program year for monitoring.

Which individuals and organizations did you develop partnerships with for 21st CCLC activities? What were the purpose and nature of these partnerships?

Each school provided in-kind contributions in terms of classroom facilities and other resources. The Complex Area office personnel provided much support and technical assistance at no cost.



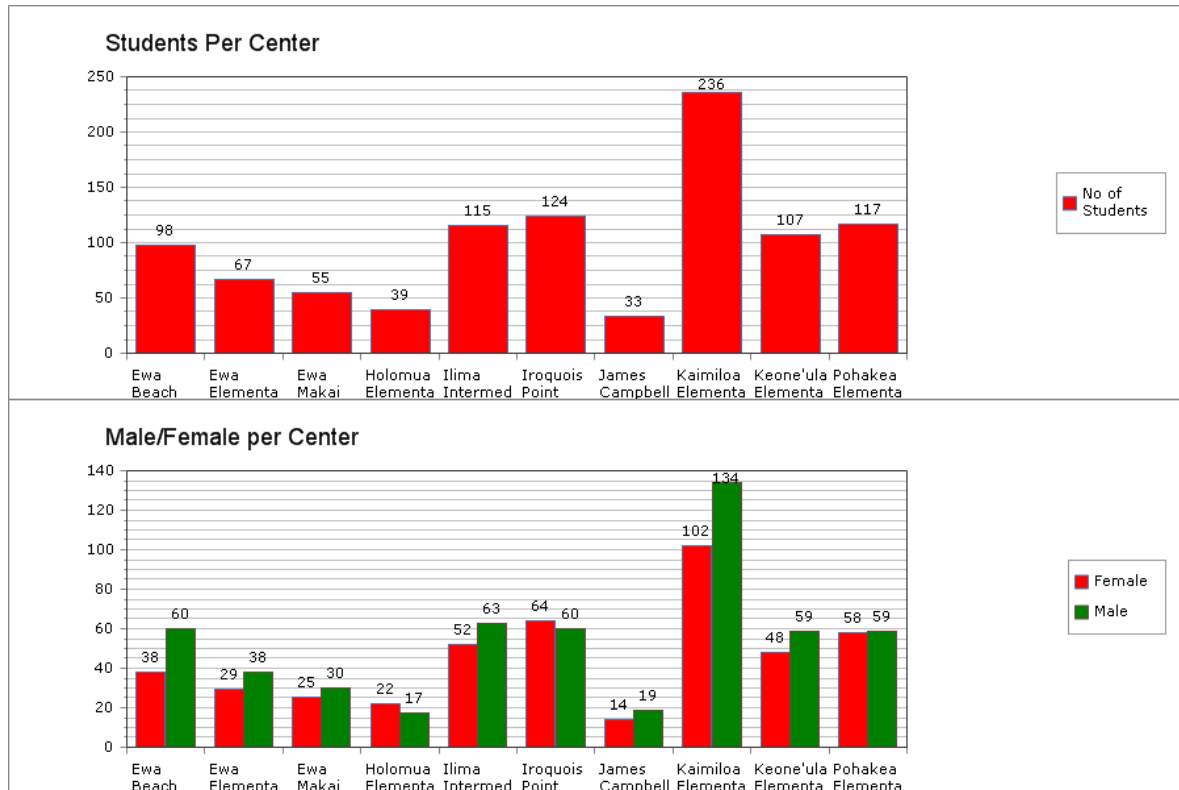
Section II. Characteristics of the Students

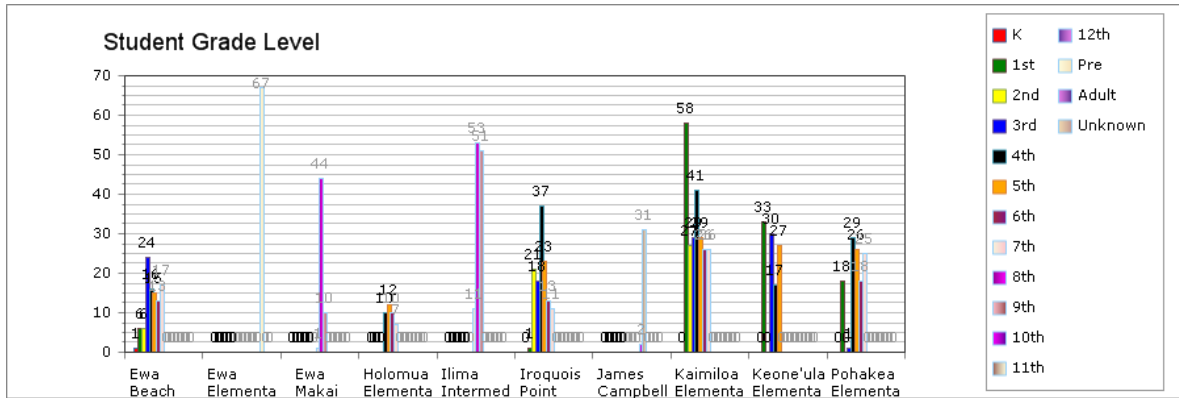
Program Goals

- Participating students will exceed or attain proficiency in reading and mathematics.

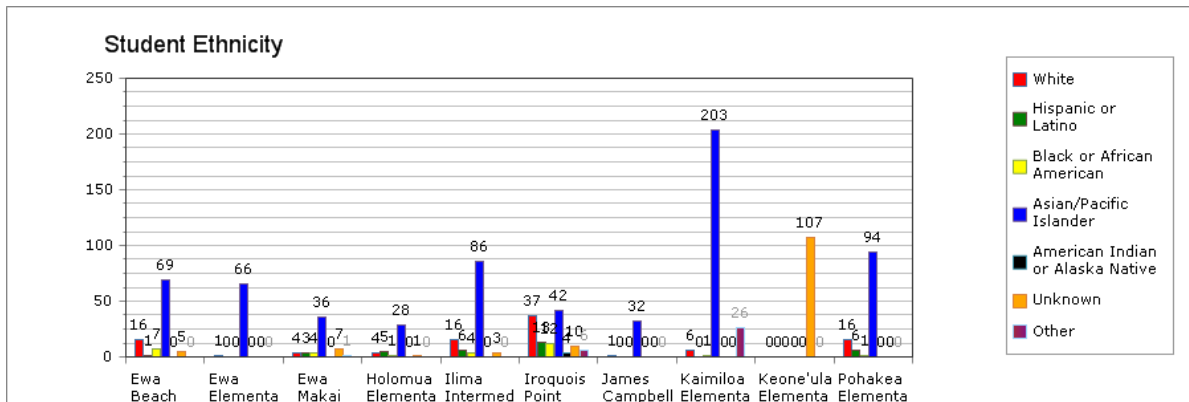
Student & Program Characteristics

Campbell Complex 21st CCLC Centers served 991 program participants during the 2013-14 program year, with 410 regular program participants or 41%. The ten schools that served these students included seven elementary schools, two middle schools, and one high school; representing students from kindergarten through twelfth grade. The demographic breakdown of the student population served is included in the graphs below.

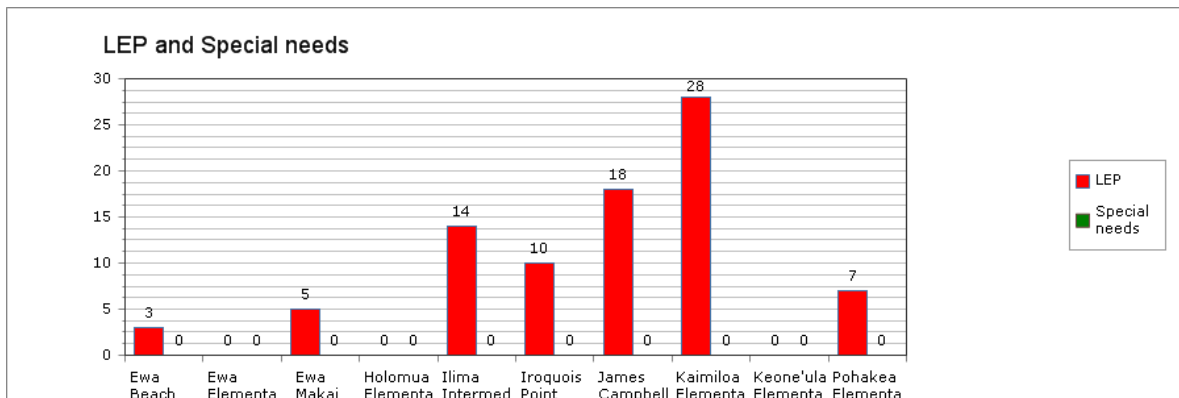




Students mostly represented Asian/Pacific Islander ethnicity with a scattering of other ethnicities represented in each of the schools.



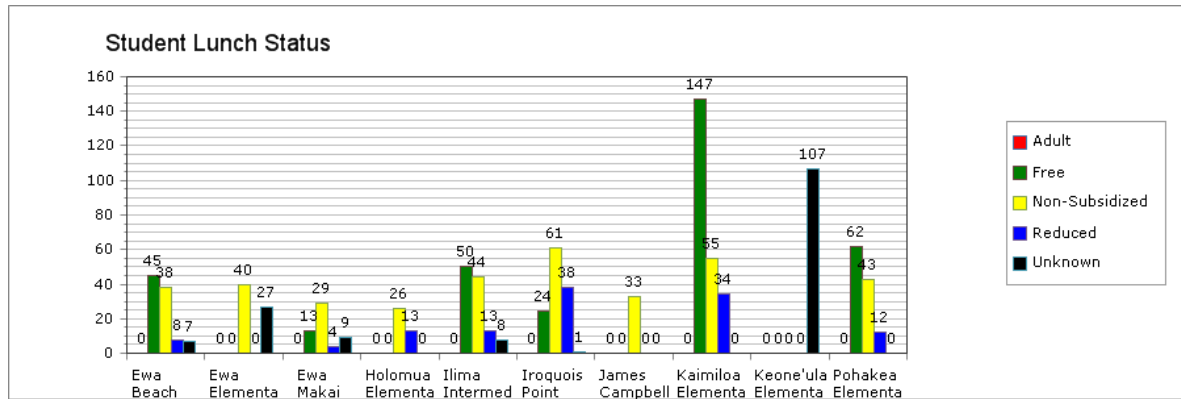
Eighty-five (26% of the total) students served by Campbell Complex 21st CCLC Centers represented LEP and Special Needs students within the schools represented. Given the focus of the 21st CCLC program to represent students in need, this statistic demonstrates Campbell Complex's effort toward that end.



When the socio-economic data of program participants are reviewed, it shows a clear focus on

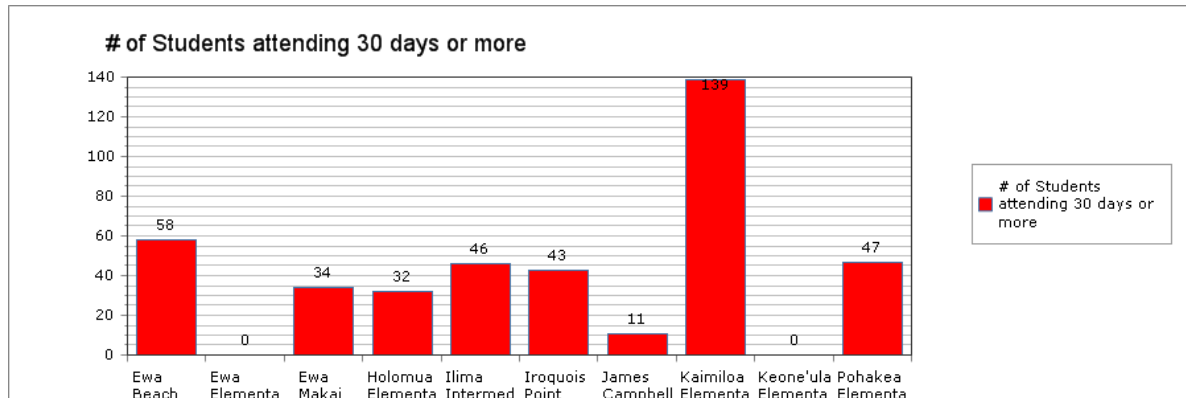


students in risk categories at the schools in the Campbell Complex. This demonstrates the program’s dedicated service of those increased risk students in program schools, one of the federal priorities of the 21st CCLC program.



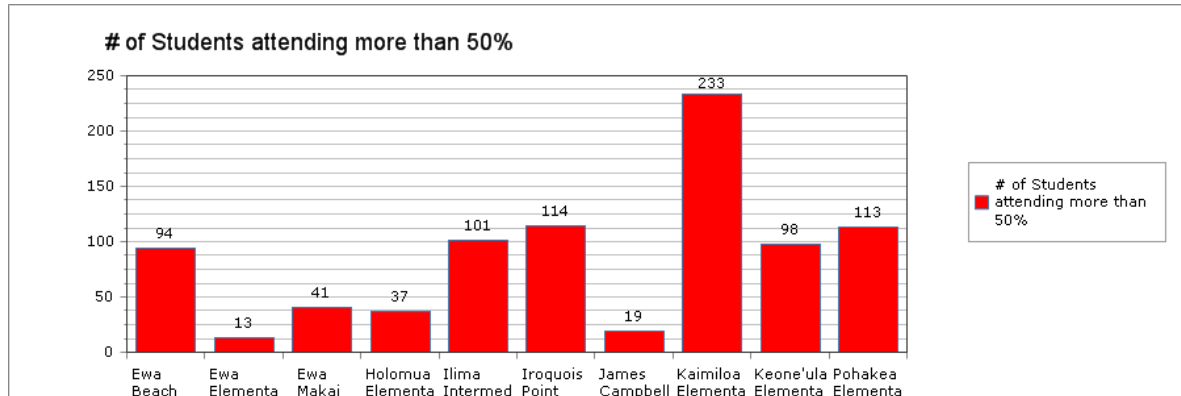
Section III. Characteristics of Programs

One of the most important statistics found within 21st CCLC programs is the number of regular program participants. The federal definition of regular program participant is 30 days, representing the full extent of the definition. This definition applies regardless of how long a student attends in a given day. This data shows the frequency of exposure that the student has to the quality program being offered.



Another measure of frequency is the percentage attended of program time offered. This is measured as students who attend more than 50% of the provided program time, in part demonstrating the desire of students to attend. The next section of data will review the programming offered during the program day, and the relative attendance rates in each program. This data demonstrates far more clearly the programming most desired by students and relative desire of students to regularly attend the program at their school.





The table below shows the number of students who enrolled in the programming offered at each location. This not only demonstrates programming popularity, but also demonstrates the variety of programming offered. A review of the data shows that a high percentage of students attended a majority of the programming offered.

| Center Name | Course Name | No. of Students enrolled |
|---------------------------|--|--------------------------|
| Ewa Beach Elementary | Summer KickStart | 0 |
| Ewa Beach Elementary | Summer 2013 | 37 |
| Ewa Beach Elementary | Math 2013-2014 | 24 |
| Ewa Beach Elementary | Reading 2013-2014 | 24 |
| Ewa Beach Elementary | Homework Center 2013-2014 | 28 |
| Ewa Elementary | HIP HOP WITH TRACY JONES | 25 |
| Ewa Elementary | LIVING ART MARINE CENTER - OCEAN HABITATS | 67 |
| Ewa Elementary | Kite Making | 11 |
| Ewa Elementary | PLAYFUL PERCUSSIONS | 67 |
| Ewa Makai Middle | AMT2 Tutorial 2 | 9 |
| Ewa Makai Middle | AMT1 Tutorial 1 | 14 |
| Ewa Makai Middle | Tutorial 20 | 18 |
| Ewa Makai Middle | Tutorial 24 | 14 |
| Holomua Elementary | Individual Fitness/ FFIRES | 8 |
| Holomua Elementary | 4th Grade Math | 10 |
| Holomua Elementary | 5th Grade Math | 11 |
| Holomua Elementary | 6th Grade Math | 10 |
| Ilima Intermediate School | 21st CCLC Summer Program | 62 |
| Ilima Intermediate School | 21st CCLC Tutoring - Reading | 41 |
| Ilima Intermediate School | 21st CCLC Tutoring - Math | 24 |
| Iroquois Point Elementary | Summer Kinderstart | 0 |
| Iroquois Point Elementary | Summer Math Tutoring | 0 |
| Iroquois Point Elementary | Summer Reading | 0 |
| Iroquois Point Elementary | SY Math | 25 |



| Center Name | Course Name | No. of Students enrolled |
|----------------------------|---------------------------------|--------------------------|
| Iroquois Point Elementary | SY Reading | 28 |
| Iroquois Point Elementary | Summer Program - Attendance | 87 |
| James Campbell High School | Reading 10 | 16 |
| James Campbell High School | Math 10 | 11 |
| James Campbell High School | Reading 10 ELL | 17 |
| Kaimiloa Elementary | Grade 1 Math/Reading | 14 |
| Kaimiloa Elementary | RenLearn Grade 3 | 10 |
| Kaimiloa Elementary | RenLearn Math Grade4 | 10 |
| Kaimiloa Elementary | ELL RenLearn Reading | 8 |
| Kaimiloa Elementary | HTY | 30 |
| Kaimiloa Elementary | Dancing Through Exercise | 77 |
| Kaimiloa Elementary | Hip Hop | 76 |
| Kaimiloa Elementary | Playful Percussion | 47 |
| Kaimiloa Elementary | Hawaiiana | 77 |
| Kaimiloa Elementary | Living Art Marine Center | 77 |
| Kaimiloa Elementary | Kite Making | 76 |
| Kaimiloa Elementary | Summer Kick Start | 47 |
| Kaimiloa Elementary | Summer ELL Reading | 14 |
| Kaimiloa Elementary | iReady | 154 |
| Kaimiloa Elementary | iReady ELL | 14 |
| Kaimiloa Elementary | GEMS Math | 0 |
| Keone'ula Elementary | 2nd Grade Art | 0 |
| Keone'ula Elementary | 3rd Grade French | 0 |
| Keone'ula Elementary | 3rd Grade Hawaiian | 0 |
| Keone'ula Elementary | 2nd Grade Math & Writing | 0 |
| Keone'ula Elementary | 3rd Grade Math & Writing | 0 |
| Keone'ula Elementary | 4th Grade Math & Writing | 0 |
| Keone'ula Elementary | 4th Grade Music | 0 |
| Keone'ula Elementary | 4th Grade Computer Technology | 0 |
| Keone'ula Elementary | Recess - 2nd, 3rd, 4th | 74 |
| Keone'ula Elementary | Recess - Kindergarten | 33 |
| Keone'ula Elementary | 2nd Grade Physical Education | 0 |
| Keone'ula Elementary | Kindergarten Summer Program | 0 |
| Keone'ula Elementary | Kindergarten Prep Program | 0 |
| Pohakea Elementary School | Reading | 13 |
| Pohakea Elementary School | Math | 40 |
| Pohakea Elementary School | Summer Academic Enrichment | 60 |
| Pohakea Elementary School | Summer KickStart | 18 |
| Pohakea Elementary School | Saturday Enrichment Fall 2013 | 0 |
| Pohakea Elementary School | Saturday Enrichment 2014 Spring | 0 |



The table below shows the average number of days attended by students in each course offered. A review of this data shows the variation between long-term activities which enabled students to reach and surpass the goal of regular program participants, and those that were short-term supplemental programs.

| Center Name | Course Name | Average number of days attended by Students |
|---------------------------|------------------------------|---|
| Ilima Intermediate School | 21st CCLC Summer Program | 17.24 |
| Ilima Intermediate School | 21st CCLC Tutoring - Reading | 54.51 |
| Pohakea Elementary School | Reading | 41 |
| Pohakea Elementary School | Math | 35.18 |
| Pohakea Elementary School | Summer Academic Enrichment | 18.53 |
| Pohakea Elementary School | Summer KickStart | 20.67 |
| Iroquois Point Elementary | Summer Kinderstart | N/A |
| Iroquois Point Elementary | Summer Math Tutoring | N/A |
| Ilima Intermediate School | 21st CCLC Tutoring - Math | 56.25 |
| Iroquois Point Elementary | Summer Reading | N/A |
| Iroquois Point Elementary | SY Math | 43.48 |
| Iroquois Point Elementary | SY Reading | 38.89 |
| Ewa Beach Elementary | Summer KickStart | N/A |
| Ewa Makai Middle | AMT2 Tutorial 2 | 29 |
| Ewa Makai Middle | AMT1 Tutorial 1 | 28.43 |
| Ewa Beach Elementary | Summer 2013 | 16.43 |
| Kaimiloa Elementary | Grade 1 Math/Reading | 14.29 |
| Kaimiloa Elementary | RenLearn Grade 3 | 16.8 |
| Kaimiloa Elementary | RenLearn Math Grade4 | 13 |
| Kaimiloa Elementary | ELL RenLearn Reading | 12.5 |
| Kaimiloa Elementary | HTY | 6.47 |
| Kaimiloa Elementary | Dancing Through Exercise | 1.95 |
| Kaimiloa Elementary | Hip Hop | 0.95 |
| Kaimiloa Elementary | Playful Percussion | 1.96 |
| Kaimiloa Elementary | Hawaiiana | 0.95 |
| Kaimiloa Elementary | Living Art Marine Center | 0.87 |
| Kaimiloa Elementary | Kite Making | N/A |
| Kaimiloa Elementary | Summer Kick Start | 14.06 |
| Kaimiloa Elementary | Summer ELL Reading | 13.79 |
| Ewa Beach Elementary | Math 2013-2014 | 34.92 |
| Ewa Beach Elementary | Reading 2013-2014 | 41.29 |
| Ewa Beach Elementary | Homework Center 2013-2014 | 39.68 |
| Kaimiloa Elementary | iReady | 46.92 |
| Kaimiloa Elementary | iReady ELL | 23.93 |



| Center Name | Course Name | Average number of days attended by Students |
|----------------------------|--|--|
| Kaimiloa Elementary | GEMS Math | N/A |
| Iroquois Point Elementary | Summer Program - Attendance | 18.41 |
| James Campbell High School | Reading 10 | 11.75 |
| James Campbell High School | Math 10 | 4.91 |
| James Campbell High School | Reading 10 ELL | 50.47 |
| Holomua Elementary | Individual Fitness/ FFIRE | 44.75 |
| Holomua Elementary | 4th Grade Math | 48.9 |
| Holomua Elementary | 5th Grade Math | 48.36 |
| Holomua Elementary | 6th Grade Math | 34.7 |
| Keone'ula Elementary | 2nd Grade Art | N/A |
| Keone'ula Elementary | 3rd Grade French | N/A |
| Keone'ula Elementary | 3rd Grade Hawaiian | N/A |
| Keone'ula Elementary | 2nd Grade Math & Writing | N/A |
| Keone'ula Elementary | 3rd Grade Math & Writing | N/A |
| Keone'ula Elementary | 4th Grade Math & Writing | N/A |
| Keone'ula Elementary | 4th Grade Music | N/A |
| Keone'ula Elementary | 4th Grade Computer Technology | N/A |
| Keone'ula Elementary | Recess - 2nd, 3rd, 4th | 10.97 |
| Keone'ula Elementary | Recess - Kindergarten | 9.36 |
| Keone'ula Elementary | 2nd Grade Physical Education | N/A |
| Keone'ula Elementary | Kindergarten Summer Program | N/A |
| Keone'ula Elementary | Kindergarten Prep Program | N/A |
| Pohakea Elementary School | Saturday Enrichment Fall 2013 | N/A |
| Pohakea Elementary School | Saturday Enrichment 2014 Spring | N/A |
| Ewa Elementary | HIP HOP WITH TRACY JONES | 0.08 |
| Ewa Elementary | LIVING ART MARINE CENTER - OCEAN HABITATS | 0.03 |
| Ewa Elementary | Kite Making | 1 |
| Ewa Elementary | PLAYFUL PERCUSSIONS | 0.03 |
| Ewa Makai Middle | Tutorial 20 | 36.17 |
| Ewa Makai Middle | Tutorial 24 | 37.86 |



The next table demonstrates the number of students who attended programs, who attended more than 30 days. A review of this data shows which programs were most heavily attended with the greatest rate of frequency. It should be noted that some courses lasted fewer than 30 days.

| Center Name | Course Name | # of Students attending more than 30 days |
|---------------------------|------------------------------|---|
| Ilima Intermediate School | 21st CCLC Summer Program | 0 |
| Ilima Intermediate School | 21st CCLC Tutoring - Reading | 29 |
| Pohakea Elementary School | Reading | 13 |
| Pohakea Elementary School | Math | 30 |
| Pohakea Elementary School | Summer Academic Enrichment | 0 |
| Pohakea Elementary School | Summer KickStart | 0 |
| Iroquois Point Elementary | Summer Kinderstart | 0 |
| Iroquois Point Elementary | Summer Math Tutoring | 0 |
| Ilima Intermediate School | 21st CCLC Tutoring - Math | 17 |
| Iroquois Point Elementary | Summer Reading | 0 |
| Iroquois Point Elementary | SY Math | 22 |
| Iroquois Point Elementary | SY Reading | 21 |
| Ewa Beach Elementary | Summer KickStart | 0 |
| Ewa Makai Middle | AMT2 Tutorial 2 | 3 |
| Ewa Makai Middle | AMT1 Tutorial 1 | 7 |
| Ewa Beach Elementary | Summer 2013 | 0 |
| Kaimiloa Elementary | Grade 1 Math/Reading | 0 |
| Kaimiloa Elementary | RenLearn Grade 3 | 0 |
| Kaimiloa Elementary | RenLearn Math Grade4 | 0 |
| Kaimiloa Elementary | ELL RenLearn Reading | 0 |
| Kaimiloa Elementary | HTY | 0 |
| Kaimiloa Elementary | Dancing Through Exercise | 0 |
| Kaimiloa Elementary | Hip Hop | 0 |
| Kaimiloa Elementary | Playful Percussion | 0 |
| Kaimiloa Elementary | Hawaiiana | 0 |
| Kaimiloa Elementary | Living Art Marine Center | 0 |
| Kaimiloa Elementary | Kite Making | N/A |
| Kaimiloa Elementary | Summer Kick Start | 0 |
| Kaimiloa Elementary | Summer ELL Reading | 0 |
| Ewa Beach Elementary | Math 2013-2014 | 14 |
| Ewa Beach Elementary | Reading 2013-2014 | 20 |
| Ewa Beach Elementary | Homework Center 2013-2014 | 24 |
| Kaimiloa Elementary | iReady | 124 |
| Kaimiloa Elementary | iReady ELL | 6 |
| Kaimiloa Elementary | GEMS Math | 0 |



| Center Name | Course Name | # of Students attending more than 30 days |
|----------------------------|---|--|
| Iroquois Point Elementary | Summer Program - Attendance | 0 |
| James Campbell High School | Reading 10 | 0 |
| James Campbell High School | Math 10 | 0 |
| James Campbell High School | Reading 10 ELL | 11 |
| Holomua Elementary | Individual Fitness/ FFIRE | 8 |
| Holomua Elementary | 4th Grade Math | 10 |
| Holomua Elementary | 5th Grade Math | 8 |
| Holomua Elementary | 6th Grade Math | 6 |
| Keone'ula Elementary | 2nd Grade Art | 0 |
| Keone'ula Elementary | 3rd Grade French | 0 |
| Keone'ula Elementary | 3rd Grade Hawaiian | 0 |
| Keone'ula Elementary | 2nd Grade Math & Writing | 0 |
| Keone'ula Elementary | 3rd Grade Math & Writing | 0 |
| Keone'ula Elementary | 4th Grade Math & Writing | 0 |
| Keone'ula Elementary | 4th Grade Music | 0 |
| Keone'ula Elementary | 4th Grade Computer Technology | 0 |
| Keone'ula Elementary | Recess - 2nd, 3rd, 4th | 0 |
| Keone'ula Elementary | Recess - Kindergarten | 0 |
| Keone'ula Elementary | 2nd Grade Physical Education | 0 |
| Keone'ula Elementary | Kindergarten Summer Program | 0 |
| Keone'ula Elementary | Kindergarten Prep Program | 0 |
| Pohakea Elementary School | Saturday Enrichment Fall 2013 | 0 |
| Pohakea Elementary School | Saturday Enrichment 2014 Spring | 0 |
| Ewa Elementary | HIP HOP WITH TRACY JONES | 0 |
| Ewa Elementary | LIVING ART MARINE CENTER - OCEAN HABITATS | 0 |
| Ewa Elementary | Kite Making | 0 |
| Ewa Elementary | PLAYFUL PERCUSSIONS | 0 |
| Ewa Makai Middle | Tutorial 20 | 10 |
| Ewa Makai Middle | Tutorial 24 | 11 |

Reviewing average attendance percentage reveals which programming is popular among students (regardless of how long an activity was in session).

| Center Name | Course Name | Average percentage of attendance by Students |
|---------------------------|------------------------------|---|
| Ilima Intermediate School | 21st CCLC Summer Program | 92.78 % |
| Ilima Intermediate School | 21st CCLC Tutoring - Reading | 69.08 % |



| Center Name | Course Name | Average percentage of attendance by Students |
|----------------------------|-----------------------------|--|
| Pohakea Elementary School | Reading | 100.00 % |
| Pohakea Elementary School | Math | 86.52 % |
| Pohakea Elementary School | Summer Academic Enrichment | 84.24 % |
| Pohakea Elementary School | Summer KickStart | 93.94 % |
| Iroquois Point Elementary | Summer Kinderstart | N/A |
| Iroquois Point Elementary | Summer Math Tutoring | N/A |
| Ilima Intermediate School | 21st CCLC Tutoring - Math | 63.40 % |
| Iroquois Point Elementary | Summer Reading | N/A |
| Iroquois Point Elementary | SY Math | 67.61 % |
| Iroquois Point Elementary | SY Reading | 65.84 % |
| Ewa Beach Elementary | Summer KickStart | N/A |
| Ewa Makai Middle | AMT2 Tutorial 2 | 61.70 % |
| Ewa Makai Middle | AMT1 Tutorial 1 | 60.36 % |
| Ewa Beach Elementary | Summer 2013 | 90.02 % |
| Kaimiloa Elementary | Grade 1 Math/Reading | 95.24 % |
| Kaimiloa Elementary | RenLearn Grade 3 | 93.33 % |
| Kaimiloa Elementary | RenLearn Math Grade4 | 72.22 % |
| Kaimiloa Elementary | ELL RenLearn Reading | 89.29 % |
| Kaimiloa Elementary | HTY | 92.38 % |
| Kaimiloa Elementary | Dancing Through Exercise | 97.40 % |
| Kaimiloa Elementary | Hip Hop | 94.74 % |
| Kaimiloa Elementary | Playful Percussion | 97.87 % |
| Kaimiloa Elementary | Hawaiiana | 94.81 % |
| Kaimiloa Elementary | Living Art Marine Center | 87.01 % |
| Kaimiloa Elementary | Kite Making | N/A |
| Kaimiloa Elementary | Summer Kick Start | 93.76 % |
| Kaimiloa Elementary | Summer ELL Reading | 91.90 % |
| Ewa Beach Elementary | Math 2013-2014 | 85.78 % |
| Ewa Beach Elementary | Reading 2013-2014 | 80.66 % |
| Ewa Beach Elementary | Homework Center 2013-2014 | 79.31 % |
| Kaimiloa Elementary | iReady | 90.78 % |
| Kaimiloa Elementary | iReady ELL | 82.46 % |
| Kaimiloa Elementary | GEMS Math | N/A |
| Iroquois Point Elementary | Summer Program - Attendance | 83.70 % |
| James Campbell High School | Reading 10 | 48.96 % |
| James Campbell High School | Math 10 | 44.63 % |
| James Campbell High School | Reading 10 ELL | 44.27 % |
| Holomua Elementary | Individual Fitness/ FFIRE | 100.00 % |
| Holomua Elementary | 4th Grade Math | 62.14 % |



| Center Name | Course Name | Average percentage of attendance by Students |
|---------------------------|---|---|
| Holomua Elementary | 5th Grade Math | 69.18 % |
| Holomua Elementary | 6th Grade Math | 66.38 % |
| Keone'ula Elementary | 2nd Grade Art | N/A |
| Keone'ula Elementary | 3rd Grade French | N/A |
| Keone'ula Elementary | 3rd Grade Hawaiian | N/A |
| Keone'ula Elementary | 2nd Grade Math & Writing | N/A |
| Keone'ula Elementary | 3rd Grade Math & Writing | N/A |
| Keone'ula Elementary | 4th Grade Math & Writing | N/A |
| Keone'ula Elementary | 4th Grade Music | N/A |
| Keone'ula Elementary | 4th Grade Computer Technology | N/A |
| Keone'ula Elementary | Recess - 2nd, 3rd, 4th | 84.41 % |
| Keone'ula Elementary | Recess - Kindergarten | 93.64 % |
| Keone'ula Elementary | 2nd Grade Physical Education | N/A |
| Keone'ula Elementary | Kindergarten Summer Program | N/A |
| Keone'ula Elementary | Kindergarten Prep Program | N/A |
| Pohakea Elementary School | Saturday Enrichment Fall 2013 | N/A |
| Pohakea Elementary School | Saturday Enrichment 2014 Spring | N/A |
| Ewa Elementary | HIP HOP WITH TRACY JONES | 8.00 % |
| Ewa Elementary | LIVING ART MARINE CENTER - OCEAN HABITATS | 2.99 % |
| Ewa Elementary | Kite Making | 100.00 % |
| Ewa Elementary | PLAYFUL PERCUSSIONS | 2.99 % |
| Ewa Makai Middle | Tutorial 20 | 64.43 % |
| Ewa Makai Middle | Tutorial 24 | 65.00 % |

The number of activities, whose attended reached 50% or more, further reveals the popularity of the programs offered.

| Center Name | Course Name | # of Students attending more than 50% |
|---------------------------|------------------------------|--|
| Ilima Intermediate School | 21st CCLC Summer Program | 61 |
| Ilima Intermediate School | 21st CCLC Tutoring - Reading | 33 |
| Pohakea Elementary School | Reading | 13 |
| Pohakea Elementary School | Math | 40 |
| Pohakea Elementary School | Summer Academic Enrichment | 54 |
| Pohakea Elementary School | Summer KickStart | 18 |
| Iroquois Point Elementary | Summer Kinderstart | 0 |
| Iroquois Point Elementary | Summer Math Tutoring | 0 |



| Center Name | Course Name | # of Students attending more than 50% |
|----------------------------|-----------------------------|---------------------------------------|
| Ilima Intermediate School | 21st CCLC Tutoring - Math | 17 |
| Iroquois Point Elementary | Summer Reading | 0 |
| Iroquois Point Elementary | SY Math | 24 |
| Iroquois Point Elementary | SY Reading | 26 |
| Ewa Beach Elementary | Summer KickStart | 0 |
| Ewa Makai Middle | AMT2 Tutorial 2 | 5 |
| Ewa Makai Middle | AMT1 Tutorial 1 | 10 |
| Ewa Beach Elementary | Summer 2013 | 36 |
| Kaimiloa Elementary | Grade 1 Math/Reading | 14 |
| Kaimiloa Elementary | RenLearn Grade 3 | 10 |
| Kaimiloa Elementary | RenLearn Math Grade4 | 8 |
| Kaimiloa Elementary | ELL RenLearn Reading | 8 |
| Kaimiloa Elementary | HTY | 29 |
| Kaimiloa Elementary | Dancing Through Exercise | 74 |
| Kaimiloa Elementary | Hip Hop | 72 |
| Kaimiloa Elementary | Playful Percussion | 45 |
| Kaimiloa Elementary | Hawaiiana | 73 |
| Kaimiloa Elementary | Living Art Marine Center | 67 |
| Kaimiloa Elementary | Kite Making | N/A |
| Kaimiloa Elementary | Summer Kick Start | 46 |
| Kaimiloa Elementary | Summer ELL Reading | 13 |
| Ewa Beach Elementary | Math 2013-2014 | 23 |
| Ewa Beach Elementary | Reading 2013-2014 | 22 |
| Ewa Beach Elementary | Homework Center 2013-2014 | 27 |
| Kaimiloa Elementary | iReady | 153 |
| Kaimiloa Elementary | iReady ELL | 13 |
| Kaimiloa Elementary | GEMS Math | 0 |
| Iroquois Point Elementary | Summer Program - Attendance | 78 |
| James Campbell High School | Reading 10 | 8 |
| James Campbell High School | Math 10 | 5 |
| James Campbell High School | Reading 10 ELL | 10 |
| Holomua Elementary | Individual Fitness/ FFIRE | 8 |
| Holomua Elementary | 4th Grade Math | 9 |
| Holomua Elementary | 5th Grade Math | 10 |
| Holomua Elementary | 6th Grade Math | 9 |
| Keone'ula Elementary | 2nd Grade Art | 0 |
| Keone'ula Elementary | 3rd Grade French | 0 |
| Keone'ula Elementary | 3rd Grade Hawaiian | 0 |
| Keone'ula Elementary | 2nd Grade Math & Writing | 0 |



| Center Name | Course Name | # of Students attending more than 50% |
|---------------------------|--|--|
| Keone'ula Elementary | 3rd Grade Math & Writing | 0 |
| Keone'ula Elementary | 4th Grade Math & Writing | 0 |
| Keone'ula Elementary | 4th Grade Music | 0 |
| Keone'ula Elementary | 4th Grade Computer Technology | 0 |
| Keone'ula Elementary | Recess - 2nd, 3rd, 4th | 65 |
| Keone'ula Elementary | Recess - Kindergarten | 33 |
| Keone'ula Elementary | 2nd Grade Physical Education | 0 |
| Keone'ula Elementary | Kindergarten Summer Program | 0 |
| Keone'ula Elementary | Kindergarten Prep Program | 0 |
| Pohakea Elementary School | Saturday Enrichment Fall 2013 | 0 |
| Pohakea Elementary School | Saturday Enrichment 2014 Spring | 0 |
| Ewa Elementary | HIP HOP WITH TRACY JONES | 2 |
| Ewa Elementary | LIVING ART MARINE CENTER - OCEAN HABITATS | 2 |
| Ewa Elementary | Kite Making | 11 |
| Ewa Elementary | PLAYFUL PERCUSSIONS | 2 |
| Ewa Makai Middle | Tutorial 20 | 15 |
| Ewa Makai Middle | Tutorial 24 | 10 |

This chart demonstrates categories, activity types, and subjects offered.

| Center Name | Course Name | Category | Activity | Subjects |
|---------------------------|------------------------------|-----------------|---------------------------------------|--------------------|
| Ilima Intermediate School | 21st CCLC Summer Program | Academic | Tutoring | |
| Ilima Intermediate School | 21st CCLC Tutoring - Reading | Academic | Tutoring | Reading / Literacy |
| Pohakea Elementary School | Reading | Academic | Tutoring | Reading / Literacy |
| Pohakea Elementary School | Math | Academic | Tutoring | Mathematics |
| Pohakea Elementary School | Summer Academic Enrichment | Academic | Academic Enrichment Learning Programs | |
| Pohakea Elementary School | Summer KickStart | Academic | Academic Enrichment Learning Programs | Other |
| Iroquois Point Elementary | Summer Kinderstart | | | |



| Center Name | Course Name | Category | Activity | Subjects |
|---------------------------|---------------------------|-----------------|---------------------------------------|--------------------------------------|
| Iroquois Point Elementary | Summer Math Tutoring | | | |
| Ilima Intermediate School | 21st CCLC Tutoring - Math | Academic | Tutoring | Mathematics |
| Iroquois Point Elementary | Summer Reading | | | |
| Iroquois Point Elementary | SY Math | Academic | Tutoring | Mathematics |
| Iroquois Point Elementary | SY Reading | Academic | Tutoring | Reading / Literacy |
| Ewa Beach Elementary | Summer KickStart | | | |
| Ewa Makai Middle | AMT2 Tutorial 2 | Academic | Homework Help | |
| Ewa Makai Middle | AMT1 Tutorial 1 | Academic | Homework Help | |
| Ewa Beach Elementary | Summer 2013 | Academic | Tutoring | |
| Kaimiloa Elementary | Grade 1 Math/Reading | Academic | Academic Enrichment Learning Programs | |
| Kaimiloa Elementary | RenLearn Grade 3 | Academic | Academic Enrichment Learning Programs | Mathematics |
| Kaimiloa Elementary | RenLearn Math Grade4 | Academic | Academic Enrichment Learning Programs | Mathematics |
| Kaimiloa Elementary | ELL RenLearn Reading | Academic | Tutoring | Reading / Literacy |
| Kaimiloa Elementary | HTY | Enrichment | Other | Arts and Music |
| Kaimiloa Elementary | Dancing Through Exercise | Enrichment | Other | Health / Nutrition |
| Kaimiloa Elementary | Hip Hop | Enrichment | Other | Arts and Music |
| Kaimiloa Elementary | Playful Percussion | Enrichment | Other | Arts and Music |
| Kaimiloa Elementary | Hawaiiana | Enrichment | Other | Cultural Activities / Social Studies |
| Kaimiloa Elementary | Living Art Marine Center | Enrichment | Other | Science |



| Center Name | Course Name | Category | Activity | Subjects |
|----------------------------|-----------------------------|------------|---------------------------------------|--------------------|
| Kaimiloa Elementary | Kite Making | Enrichment | Recreational Activities | Science |
| Kaimiloa Elementary | Summer Kick Start | Academic | Academic Enrichment Learning Programs | |
| Kaimiloa Elementary | Summer ELL Reading | Academic | Other | Reading / Literacy |
| Ewa Beach Elementary | Math 2013-2014 | Academic | Tutoring | Mathematics |
| Ewa Beach Elementary | Reading 2013-2014 | Academic | Tutoring | Reading / Literacy |
| Ewa Beach Elementary | Homework Center 2013-2014 | Academic | Homework Help | |
| Kaimiloa Elementary | iReady | Academic | Tutoring | Reading / Literacy |
| Kaimiloa Elementary | iReady ELL | Academic | Tutoring | Reading / Literacy |
| Kaimiloa Elementary | GEMS Math | | | |
| Iroquois Point Elementary | Summer Program - Attendance | Academic | Academic Enrichment Learning Programs | |
| James Campbell High School | Reading 10 | Academic | Academic Enrichment Learning Programs | Reading / Literacy |
| James Campbell High School | Math 10 | Academic | Academic Enrichment Learning Programs | Mathematics |
| James Campbell High School | Reading 10 ELL | Academic | Academic Enrichment Learning Programs | Reading / Literacy |
| Holomua Elementary | Individual Fitness/ FFIRE | Academic | Tutoring | Mathematics |
| Holomua Elementary | 4th Grade Math | Academic | Tutoring | Mathematics |
| Holomua Elementary | 5th Grade Math | Academic | Tutoring | Mathematics |



| Center Name | Course Name | Category | Activity | Subjects |
|---------------------------|---|-----------------|---------------------------------------|--------------------|
| Holomua Elementary | 6th Grade Math | Academic | Tutoring | Mathematics |
| Keone'ula Elementary | 2nd Grade Art | | | |
| Keone'ula Elementary | 3rd Grade French | | | |
| Keone'ula Elementary | 3rd Grade Hawaiian | | | |
| Keone'ula Elementary | 2nd Grade Math & Writing | | | |
| Keone'ula Elementary | 3rd Grade Math & Writing | | | |
| Keone'ula Elementary | 4th Grade Math & Writing | | | |
| Keone'ula Elementary | 4th Grade Music | | | |
| Keone'ula Elementary | 4th Grade Computer Technology | | | |
| Keone'ula Elementary | Recess - 2nd, 3rd, 4th | Enrichment | Recreational Activities | Health / Nutrition |
| Keone'ula Elementary | Recess - Kindergarten | Enrichment | Recreational Activities | Health / Nutrition |
| Keone'ula Elementary | 2nd Grade Physical Education | | | |
| Keone'ula Elementary | Kindergarten Summer Program | | | |
| Keone'ula Elementary | Kindergarten Prep Program | | | |
| Pohakea Elementary School | Saturday Enrichment Fall 2013 | | | |
| Pohakea Elementary School | Saturday Enrichment 2014 Spring | | | |
| Ewa Elementary | HIP HOP WITH TRACY JONES | Enrichment | Recreational Activities | Health / Nutrition |
| Ewa Elementary | LIVING ART MARINE CENTER - OCEAN HABITATS | Enrichment | Academic Enrichment Learning Programs | Science |
| Ewa Elementary | Kite Making | | | |
| Ewa Elementary | PLAYFUL PERCUSSIONS | Enrichment | Recreational Activities | Arts and Music |
| Ewa Makai Middle | Tutorial 20 | Academic | Homework Help | |



| Center Name | Course Name | Category | Activity | Subjects |
|------------------|-------------|----------|---------------|----------|
| Ewa Makai Middle | Tutorial 24 | Academic | Homework Help | |
| | | | | |

This last chart specifies the duration of the courses provided: per day, per week, and per year.

| Center Name | Course Name | Hrs-Mins/Day | Days of Week | Weeks Met |
|---------------------------|------------------------------|--------------------|--------------|-----------|
| Ilima Intermediate School | 21st CCLC Summer Program | 3 hours | M Tu W Th F | 4 |
| Ilima Intermediate School | 21st CCLC Tutoring - Reading | 1 hour 30 minutes | M Tu Th F | 26 |
| Pohakea Elementary School | Reading | 2 hours | Tu Th | 20 |
| Pohakea Elementary School | Math | 2 hours | Tu Th | 21 |
| Pohakea Elementary School | Summer Academic Enrichment | 4 hours | M Tu W Th F | 4 |
| Pohakea Elementary School | Summer KickStart | 4 hours | M Tu W Th F | 4 |
| Iroquois Point Elementary | Summer Kinderstart | 3 hours | M Tu W Th F | 3 |
| Iroquois Point Elementary | Summer Math Tutoring | 3 hours | M Tu W Th F | 3 |
| Ilima Intermediate School | 21st CCLC Tutoring - Math | 1 hour 30 minutes | M Tu Th F | 26 |
| Iroquois Point Elementary | Summer Reading | 3 hours | M Tu W Th F | 3 |
| Iroquois Point Elementary | SY Math | 2 hours 30 minutes | M Tu Th | 24 |
| Iroquois Point Elementary | SY Reading | 2 hours 30 minutes | M Tu Th | 23 |
| Ewa Beach Elementary | Summer KickStart | 4 hours | M Tu W Th F | 3 |
| Ewa Makai Middle | AMT2 Tutorial 2 | 1 hour | Tu Th F | 19 |
| Ewa Makai Middle | AMT1 Tutorial 1 | 1 hour | Tu Th F | 19 |
| Ewa Beach Elementary | Summer 2013 | 4 hours | M Tu W Th F | 3 |
| Kaimiloa Elementary | Grade 1 Math/Reading | 3 hours 30 minutes | M Tu W Th F | 3 |
| Kaimiloa Elementary | RenLearn Grade 3 | 1 hour 45 minutes | M Tu Th F | 4 |
| Kaimiloa Elementary | RenLearn Math Grade4 | 1 hour 45 minutes | M Tu Th F | 4 |



| Center Name | Course Name | Hrs-Mins/Day | Days of Week | Weeks Met |
|----------------------------|-----------------------------|--------------------|--------------|-----------|
| Kaimiloa Elementary | ELL RenLearn Reading | 1 hour 45 minutes | M Tu F | 4 |
| Kaimiloa Elementary | HTY | 1 hour | M Tu W Th F | 1 |
| Kaimiloa Elementary | Dancing Through Exercise | 1 hour | W F | 1 |
| Kaimiloa Elementary | Hip Hop | 1 hour | Th | 1 |
| Kaimiloa Elementary | Playful Percussion | 1 hour | M Th | 1 |
| Kaimiloa Elementary | Hawaiiana | 1 hour | Tu | 1 |
| Kaimiloa Elementary | Living Art Marine Center | 3 hours | M | 1 |
| Kaimiloa Elementary | Kite Making | 3 hours | Tu | 1 |
| Kaimiloa Elementary | Summer Kick Start | 3 hours 30 minutes | M Tu W Th F | 3 |
| Kaimiloa Elementary | Summer ELL Reading | 3 hours 30 minutes | M Tu W Th F | 3 |
| Ewa Beach Elementary | Math 2013-2014 | 1 hour 30 minutes | M Tu Th | 18 |
| Ewa Beach Elementary | Reading 2013-2014 | 1 hour 30 minutes | M Tu Th | 18 |
| Ewa Beach Elementary | Homework Center 2013-2014 | 1 hour 30 minutes | M Tu Th | 18 |
| Kaimiloa Elementary | iReady | 1 hour | M Tu W Th F | 7 |
| Kaimiloa Elementary | iReady ELL | 1 hour | M Tu F | 5 |
| Kaimiloa Elementary | GEMS Math | 1 hour 45 minutes | M Tu Th | 5 |
| Iroquois Point Elementary | Summer Program - Attendance | 3 hours | M Tu W Th F | 4 |
| James Campbell High School | Reading 10 | 1 hour 15 minutes | Tu Th | 12 |
| James Campbell High School | Math 10 | 1 hour 15 minutes | W | 11 |
| James Campbell High School | Reading 10 ELL | 2 hours 15 minutes | M Tu W Th F | 22 |
| Holomua Elementary | Individual Fitness/ FFIRE | 1 hour 30 minutes | M Tu Th | 15 |
| Holomua Elementary | 4th Grade Math | 1 hour 30 minutes | M Tu Th | 28 |
| Holomua Elementary | 5th Grade Math | 1 hour 30 minutes | M Tu Th | 28 |
| Holomua Elementary | 6th Grade Math | 1 hour 30 minutes | M Tu Th | 28 |



Campbell Complex Evaluation 2013-14

| Center Name | Course Name | Hrs-Mins/Day | Days of Week | Weeks Met |
|---------------------------|---|---------------------|---------------------|------------------|
| Keone'ula Elementary | 2nd Grade Art | 1 hour | M Tu W Th F | 2 |
| Keone'ula Elementary | 3rd Grade French | 1 hour | M Tu W Th F | 2 |
| Keone'ula Elementary | 3rd Grade Hawaiian | 1 hour | M Tu W Th F | 2 |
| Keone'ula Elementary | 2nd Grade Math & Writing | 1 hour | M Tu W Th F | 2 |
| Keone'ula Elementary | 3rd Grade Math & Writing | 1 hour | M Tu W Th F | 2 |
| Keone'ula Elementary | 4th Grade Math & Writing | 1 hour | M Tu W Th F | 2 |
| Keone'ula Elementary | 4th Grade Music | 1 hour | M Tu W Th F | 2 |
| Keone'ula Elementary | 4th Grade Computer Technology | 1 hour | M Tu W Th F | 2 |
| Keone'ula Elementary | Recess - 2nd, 3rd, 4th | 30 minutes | M Tu W Th F | 2 |
| Keone'ula Elementary | Recess - Kindergarten | 30 minutes | M Tu W Th F | 2 |
| Keone'ula Elementary | 2nd Grade Physical Education | 1 hour | M Tu W Th F | 2 |
| Keone'ula Elementary | Kindergarten Summer Program | 2 hours 30 minutes | M Tu W Th F | 2 |
| Keone'ula Elementary | Kindergarten Prep Program | 2 hours 30 minutes | M Tu W Th F | 2 |
| Pohakea Elementary School | Saturday Enrichment Fall 2013 | 2 hours | S | 0 |
| Pohakea Elementary School | Saturday Enrichment 2014 Spring | 2 hours | S | 0 |
| Ewa Elementary | HIP HOP WITH TRACY JONES | 1 hour | Tu | 1 |
| Ewa Elementary | LIVING ART MARINE CENTER - OCEAN HABITATS | 3 hours | F | 1 |
| Ewa Elementary | Kite Making | 1 hour | Th | 1 |
| Ewa Elementary | PLAYFUL PERCUSSIONS | 2 hours | M | 1 |
| Ewa Makai Middle | Tutorial 20 | 1 hour | Tu Th F | 23 |
| Ewa Makai Middle | Tutorial 24 | 1 hour | Tu Th F | 23 |



**Section IV.
Student
Performance**

The final element of review is the student performance data available for those students who attended 30 days or more of 21st CCLC programming.

| Performance Measures | Data and Notes |
|--|---|
| <p>1. Participating students will exceed or attain proficiency in reading and mathematics.</p> <p>Grades information</p> | <p>Elementary grades are for reading and math.</p> <p>Ewa Beach Elementary - Reading</p> <ul style="list-style-type: none"> • 94 regular program participants; records available for 55 • 19 maintained or improved; 7 with failing grade throughout • 19.39 %% maintained or improved <p>Ewa Beach Elementary - Math</p> <ul style="list-style-type: none"> • 94 regular program participants; records available for 55 • 19 maintained or improved; 6 with failing grade throughout • 19.39 %% maintained or improved <p>Ewa Elementary - Reading</p> <ul style="list-style-type: none"> • 13 regular program participants; records available for 0 • 0 maintained or improved; 0 with failing grade throughout • 0.00 %% maintained or improved <p>Ewa Elementary - Math</p> <ul style="list-style-type: none"> • 13 regular program participants; records available for 0 • 0 maintained or improved; 0 with failing grade throughout • 0.00 %% maintained or improved |



Ewa Makai Middle - Reading

- 41 regular program participants; records available for 0
- 0 maintained or improved; 0 with failing grade throughout
- 0.00 %% maintained or improved

Ewa Makai Middle - Math

- 41 regular program participants; records available for 0
- 0 maintained or improved; 0 with failing grade throughout
- 0.00 %% maintained or improved

Holomua Elementary - Reading

- 37 regular program participants; records available for 32
- 15 maintained or improved; 3 with failing grade throughout
- 38.46 %% maintained or improved

Holomua Elementary - Math

- 37 regular program participants; records available for 32
- 15 maintained or improved; 6 with failing grade throughout
- 38.46 %% maintained or improved

Ilima Intermediate School - Reading

- 101 regular program participants; records available for 42
- 19 maintained or improved; 7 with failing grade throughout
- 16.52 %% maintained or improved

Ilima Intermediate School - Math

- 101 regular program participants; records available for 42
- 19 maintained or improved; 7 with failing grade throughout



- 16.52 %% maintained or improved

Iroquois Point Elementary - Reading

- 114 regular program participants; records available for 43
- 12 maintained or improved; 3 with failing grade throughout
- 9.68 %% maintained or improved

Iroquois Point Elementary - Math

- 114 regular program participants; records available for 41
- 23 maintained or improved; 0 with failing grade throughout
- 18.55 %% maintained or improved

James Campbell High School - Reading

- 19 regular program participants; records available for 11
- 6 maintained or improved; 0 with failing grade throughout
- 18.18 %% maintained or improved

James Campbell High School - Math

- 19 regular program participants; records available for 0
- 0 maintained or improved; 0 with failing grade throughout
- 0.00 %% maintained or improved

Kaimiloa Elementary - Reading

- 233 regular program participants; records available for 59
- 0 maintained or improved; 0 with failing grade throughout
- 0.00 %% maintained or improved

Kaimiloa Elementary - Math

- 233 regular program participants; records available for 57



| | |
|---------------------------|---|
| | <ul style="list-style-type: none"> • 0 maintained or improved; 0 with failing grade throughout • 0.00 %% maintained or improved <p>Keone'ula Elementary - Reading</p> <ul style="list-style-type: none"> • 98 regular program participants; records available for 0 • 0 maintained or improved; 0 with failing grade throughout • 0.00 %% maintained or improved <p>Keone'ula Elementary - Math</p> <ul style="list-style-type: none"> • 98 regular program participants; records available for 0 • 0 maintained or improved; 0 with failing grade throughout • 0.00 %% maintained or improved <p>Pohakea Elementary School - Reading</p> <ul style="list-style-type: none"> • 113 regular program participants; records available for 56 • 17 maintained or improved; 0 with failing grade throughout • 14.53 %% maintained or improved <p>Pohakea Elementary School - Math</p> <ul style="list-style-type: none"> • 113 regular program participants; records available for 79 • 34 maintained or improved; 0 with failing grade throughout • 29.06 %% maintained or improved |
| <p>Teacher Surveys...</p> | <p>Ewa Beach Elementary</p> <ul style="list-style-type: none"> • 57 surveys completed • 43 responses indicated improvement, no change, or no need to improve • -->75.44 %% maintained or improved homework completion rates <p>Ewa Elementary</p> |



- 0 surveys completed
- 0 responses indicated improvement, no change, or no need to improve
- -->N/A% maintained or improved homework completion rates

Ewa Makai Middle

- 0 surveys completed
- 0 responses indicated improvement, no change, or no need to improve
- -->N/A% maintained or improved homework completion rates

Holomua Elementary

- 32 surveys completed
- 4 responses indicated improvement, no change, or no need to improve
- -->12.50 %% maintained or improved homework completion rates

Ilima Intermediate School

- 44 surveys completed
- 1 responses indicated improvement, no change, or no need to improve
- -->2.27 %% maintained or improved homework completion rates

Iroquois Point Elementary

- 51 surveys completed
- 29 responses indicated improvement, no change, or no need to improve
- -->56.86 %% maintained or improved homework completion rates

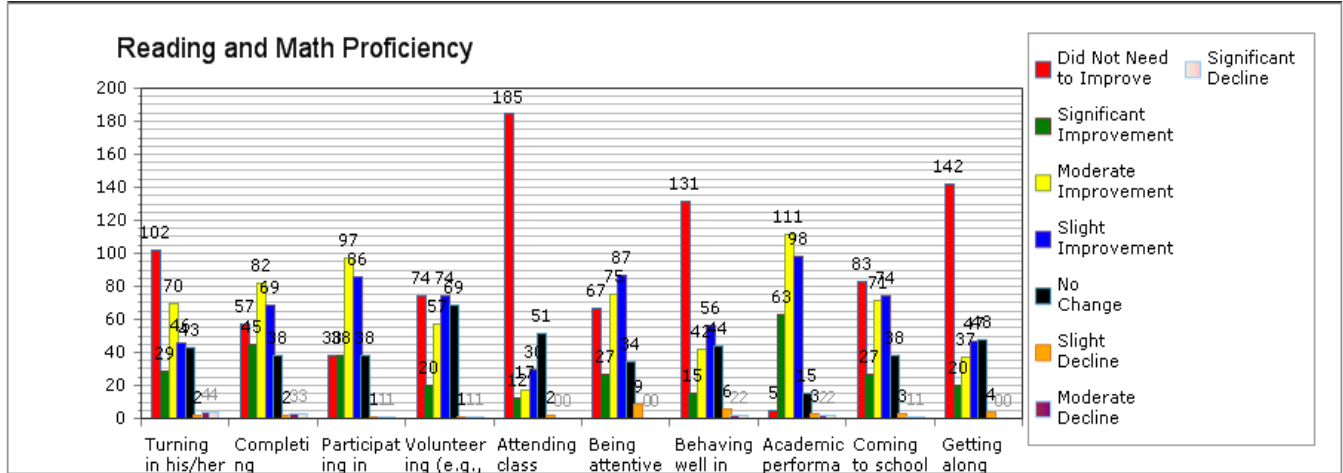
James Campbell High School

- 11 surveys completed
- 0 responses indicated improvement, no change, or no need to improve
- -->0.00 %% maintained or improved



| | |
|---|--|
| | <p>homework completion rates</p> <p>Kaimiloa Elementary</p> <ul style="list-style-type: none"> • 132 surveys completed • 86 responses indicated improvement, no change, or no need to improve • -->65.15 %% maintained or improved homework completion rates <p>Keone'ula Elementary</p> <ul style="list-style-type: none"> • 0 surveys completed • 0 responses indicated improvement, no change, or no need to improve • -->N/A% maintained or improved homework completion rates <p>Pohakea Elementary School</p> <ul style="list-style-type: none"> • 58 surveys completed • 41 responses indicated improvement, no change, or no need to improve • -->70.69 %% maintained or improved homework completion rates |
| <p>100 percent of families/guardians will be offered a variety of services and educational resources.</p> | <p>2Well attended complex wide events were included in the data for 2013-14 with the following reflection:</p> <ul style="list-style-type: none"> • 227 Program participants attended • 130 non program participants attended • 173 family members participated • 120 non program participant family members attended |





Section V. Findings

Findings

As a whole, the program at Campbell Complex 21st CCLC Centers provided a great opportunity for students to participate in academically enriching programming. Campbell Complex offered a wide variety of activities that was intended to attract and retain students. Given the increased number of students attending the program and the rate and frequency of student attendance demonstrated in the graphs above, the program did appear to indeed provide programming that would attract and retain students except in two schools.

- *The data demonstrates that frequency of attendance was good and rate of attendance was better.*
 - 991 students attended the program
 - 410 or 41.37 % were regular program participants
 - 863 or 87.08% attended 50% or more of the programs offered
- *The data shows there was a wide range of activities across multiple categories that attracted and retained students to the program.*
 - Summer programming included 20 Academic activities and 19 Enrichment activities
 - School year program included 43 Academic activities and 0 Enrichment activities
- *The data shows that the targeted number of students receiving academic learning support rose.*
 - 991 students attended the program.
 - The number of program participants rose from 2012-2013 to 2013-2014.
 - The number of regular program participants at Campbell Complex rose from 2012-2013 to 2013-2014.
- *The programs maintained a positive demographic mixture of identified students while providing programming for a high number of LEP and special needs students.*
 - 85 or 8.58 % of students who attended were LEP
 - 37 or 3.73 % of students who attended were Special Needs
 - 341 or 34.41 % of students attending were subsidized for lunch
 - 12 or 1.21 % of students attending were non-subsidized for lunch
 - 452 females and 539 males attended
 - The largest attendees grade level wise were students in the Pre and K grades, representing 6.86 % of students





Section V.
Recommendations

Next Steps

The Campbell Complex Area 21st CCLC programs provided a wonderful opportunity for children to participate in a program during out of school time. They provided a broad array of after-school activities that created an opportunity for students to receive the extra help they need and to advance academically.

Given the data available, the following are the recommendations of this evaluator in relation to the overall objectives of the 21st CCLC program and the specific goals of the Campbell Complex 21st CCLC programs.

The first purpose of all voluntary OST programs is to attract and retain students to the program. Campbell Complex offered a wide variety of activities meant to attract and retain students and received valuable attendance data. Some of the programs of the Campbell Complex were unable to attain the desired attendance. Where subjective and objective data were available to demonstrate desired activities within the program, the first recommendation is a continued focus on activities that attract and retain children to the program. Statistically, students who attend programming at higher rates of frequency tend to improve at higher rates academically and have fewer behavioral issues. Specifically, students who attend more than 50 days of programming per year are more likely to demonstrate measurable academic gains. The data above demonstrates those programs that are attracting and retaining students. The two schools without regular program participants are not likely to be able to help their students attain the desired academic gains due to lack of impact.

The second area of focus is academic achievement. The goal was specifically written to proficiency in reading and math; however the objectives were not able to measure proficiency. A greater alignment between the goal, the objectives and assessments is recommended. So that the objectives are far more attainable within the time available, the objectives should focus more on manageable components within the measured standards. Instead of focusing on the entire standing of reading or math, the students should be provided specific goal areas within the core standards. This is far more measurable and attainable within the time available.

The third area of focus is in family programming. Not only is this a required section of 21st CCLC, research clearly shows the benefits parental involvement and family literacy have in academic and behavioral impact on students. Offering consistency in engaging family programming is recommended. While some schools did offer some family programming, a recommendation for more local family programming consistently is more likely to meet the desired result. Relatively few local school based family programs were recorded in the 2013-14 program year, however multi. Some programs have no data reflecting family programming, thus limiting the impact on behavioral and academic needs that may exist.



Recommendations

1. Attract and retain students to the 21st CCLC program by reviewing and analyzing attendance data, and making adjustments to programming activities according to the needs and interests of the students. The schools that have students that have not attended at frequency to bring about desired change must first attain enough student interest to bring frequency rates to meet the desired results.
2. Use methodology and data to focus on reading and math proficiency rather than reading and math grades to affect proficiency levels of regular program participants. When universally applied academic intervention is applied to a group of students whose needs have not been adequately identified, the ability to actually attain those needs is minimal at best.
3. Continue to offer consistent family programming that is engaging and encourages parental involvement to enhance student attendance and better connect home to school. Consistent emphasis on family programming should be applied to all centers as well as continuing the larger multi-school events that were well attended.

