



Waiahole Elementary

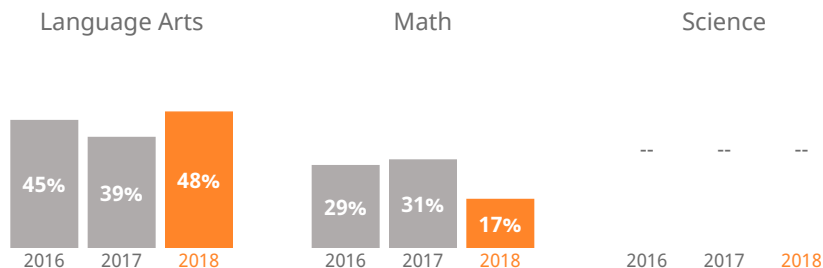
48-215 Waiahole Valley Road, Kaneohe, Hawaii | Oahu | Castle-Kahuku Complex Area

THE STRIVE HI SCHOOL PERFORMANCE REPORT is an annual snapshot of a school's performance on key indicators of student success. This report shows schools' progress on the Department and Board of Education's Strategic Plan and federally-required indicators under the Every Student Succeeds Act. These results help inform action for teachers, principals, community members, and other stakeholders.



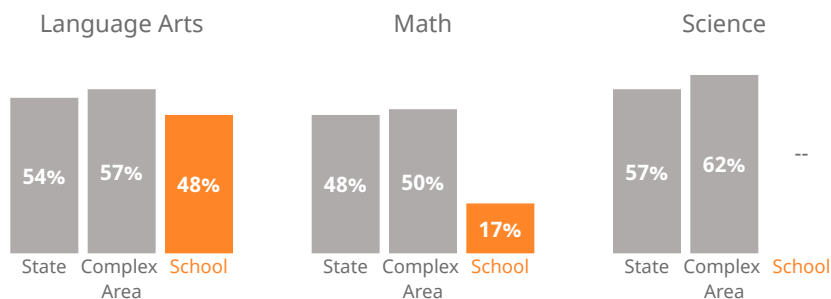
How are students performing in each subject?

Measures the percent of students meeting the standard/who are proficient on state assessments.



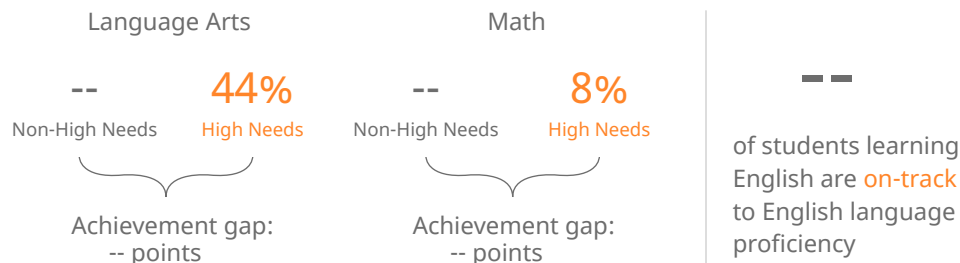
How are students performing compared to others?

Compares the percent of students meeting the standard/who are proficient on state assessments.



How are student subgroups performing?

High Needs: English learners, economically disadvantaged, and students receiving Special Education services. Non-High Needs: All other students.



How are students' academic progress measured?

The Smarter Balanced test shows the relative progress of the average student on state assessments using a Median Growth Percentile (MGP). HSA-Alt & KĀ'EO tests show the percent of students making academic growth each year.

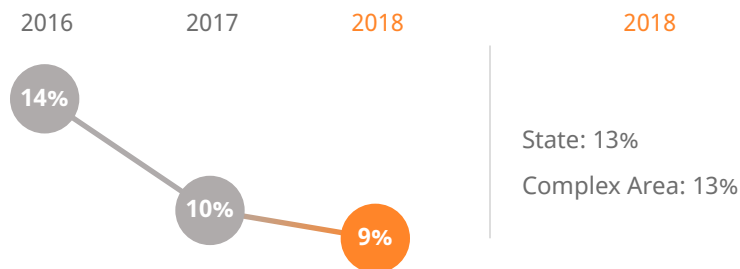


How many 3rd graders read on grade level?

-- of 3rd graders read **near, at, or above** grade level



How many students missed 15 or more days of school this year?



How do students feel about their school?

Measures percent of students reporting positive school climate as measured by the Tripod Student Perception Survey.

86% of students **feel positively** about their school

Waiahole Elementary

48-215 Waiahole Valley Road, Kaneohe, Hawaii | Oahu | Castle-Kahuku Complex Area

Our Story

Waiahole Elementary School is a special school rich in history, tradition and culture. Established in 1893, Waiahole is one of the oldest and smallest schools on Oahu. Today, we service approximately 82 students in PreK through Grade 6, 45% of whom are Native Hawaiian. We are a Title 1 school, with 74% of our students qualifying for free or reduced-cost meals.

In 2014-15, during the first year of the Smarter Balanced Assessment (SBA), our scores dipped to an overall 32% proficiency in ELA and 15% proficiency in Math. During SY 2015-2016 we made gains in ELA and Math, with proficiency scores of 45% and 29%, respectively. During SY 2016-2017, our ELA scores dipped to 39% and our math scores increased to 31%. At Waiahole Elementary, our suspension and retention rates have been kept to a minimum. Over the last three years (SY 2014-2017), our retention rate has been zero percent while our suspension rate has fluctuated. During SY 2014-2015, our suspension rate was six percent compared to one percent in SY 2015-2016. In SY 2016-2017, our suspension rate was three percent. Our Positive Behavioral Intervention and Supports framework which aligns to our complex's 5 R's: respect, responsibility, resiliency, resourcefulness and relationships has played a key role in creating a school culture of respect.

As a school, we are continuously developing and reflecting on our craft and are committed to meeting student needs and to supporting student growth as self-assessment capable learners. To this means, teachers collaborate, review student work samples, and discuss next steps for instruction in weekly Professional Learning Communities. We are committed to ensuring that all of our students learn, grow, and achieve. We truly are a small school with a big heart!

Our Local Measures

Local Measures provide the opportunity for schools and complex areas to provide supplemental data and information about their performance that may not be reflected by the statewide measures in Strive HI. As such, Local Measures can provide greater context to help stakeholders better understand and interpret how a school contributes to students' success.

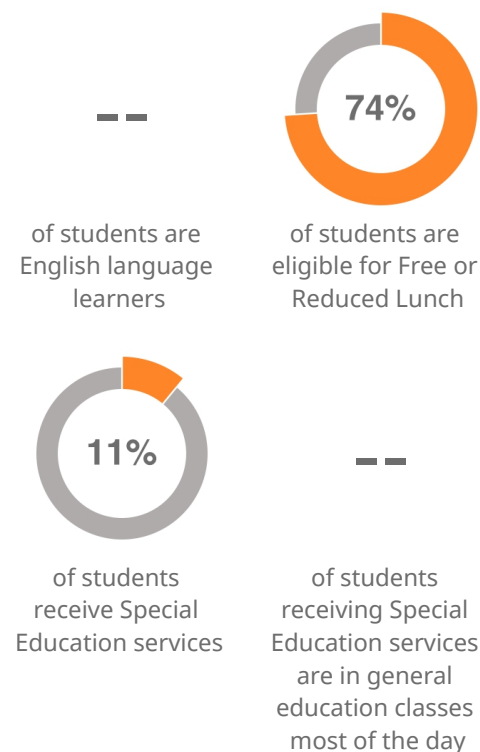
- 0%** **Retention.** Measures the percent of students retained (kept back a grade).
- 0%** **Suspension.** Measures the percent of students suspended for Class A-D offenses.

About Our School

Principal | Alexandra Obra
Grades | K-6
808-239-3111
www.waiahole.org

81

students enrolled



How do you measure how well a school is doing? In our estimation, it's more than scores on high-stakes tests. Schools should show that they are supporting children along the educational pipeline toward college, career, and community readiness. Are our students attending school? Are they graduating? Are they going to college? And how successfully are schools reducing the achievement gap between high-needs and non-high needs students?

The Strive HI Performance System was designed to account for these factors in student success. Initially created in 2013 by a U.S. Department of Education waiver from certain aspects of the former No Child Left Behind Act, Strive HI has been refocused by the goals and priorities of the 2017-2020 Department of Education and Board of Education Strategic Plan, the governing document for the public education system.

Learn more at
<http://bit.ly/StriveHISystem>



Waiahole Elementary

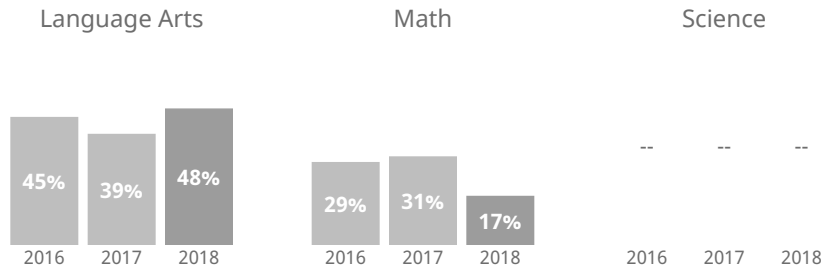
48-215 Waiahole Valley Road, Kaneohe, Hawaii | Oahu | Castle-Kahuku Complex Area

THE STRIVE HI SCHOOL PERFORMANCE REPORT is an annual snapshot of a school's performance on key indicators of student success. This report shows schools' progress on the Department and Board of Education's Strategic Plan and federally-required indicators under the Every Student Succeeds Act. These results help inform action for teachers, principals, community members, and other stakeholders.



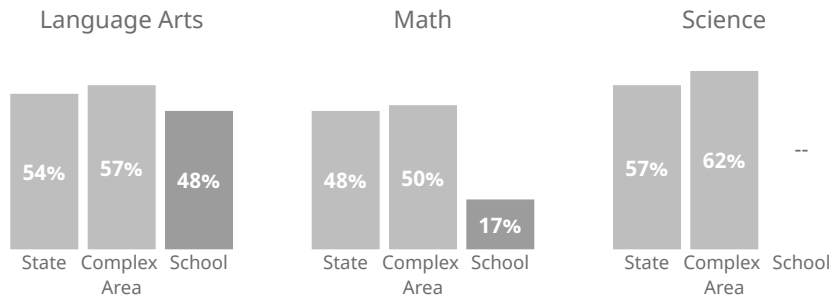
How are students performing in each subject?

Measures the percent of students meeting the standard/who are proficient on state assessments.



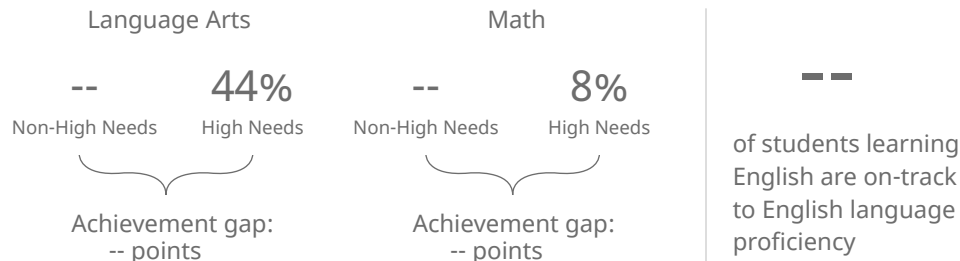
How are students performing compared to others?

Compares the percent of students meeting the standard/who are proficient on state assessments.



How are student subgroups performing?

High Needs: English learners, economically disadvantaged, and students receiving Special Education services. Non-High Needs: All other students.



How are students' academic progress measured?

The Smarter Balanced test shows the relative progress of the average student on state assessments using a Median Growth Percentile (MGP). HSA-Alt & KĀ'EO tests show the percent of students making academic growth each year.

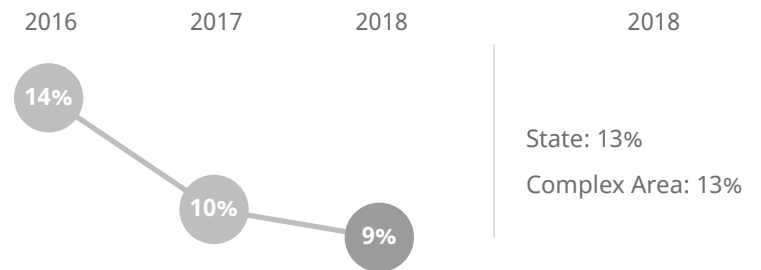


How many 3rd graders read on grade level?

-- of 3rd graders read near, at, or above grade level



How many students missed 15 or more days of school this year?



How do students feel about their school?

Measures percent of students reporting positive school climate as measured by the Tripod Student Perception Survey.

86% of students feel positively about their school

Waiahole Elementary

48-215 Waiahole Valley Road, Kaneohe, Hawaii | Oahu | Castle-Kahuku Complex Area

Our Story

Waiahole Elementary School is a special school rich in history, tradition and culture. Established in 1893, Waiahole is one of the oldest and smallest schools on Oahu. Today, we service approximately 82 students in PreK through Grade 6, 45% of whom are Native Hawaiian. We are a Title 1 school, with 74% of our students qualifying for free or reduced-cost meals.

In 2014-15, during the first year of the Smarter Balanced Assessment (SBA), our scores dipped to an overall 32% proficiency in ELA and 15% proficiency in Math. During SY 2015-2016 we made gains in ELA and Math, with proficiency scores of 45% and 29%, respectively. During SY 2016-2017, our ELA scores dipped to 39% and our math scores increased to 31%. At Waiahole Elementary, our suspension and retention rates have been kept to a minimum. Over the last three years (SY 2014-2017), our retention rate has been zero percent while our suspension rate has fluctuated. During SY 2014-2015, our suspension rate was six percent compared to one percent in SY 2015-2016. In SY 2016-2017, our suspension rate was three percent. Our Positive Behavioral Intervention and Supports framework which aligns to our complex's 5 R's: respect, responsibility, resiliency, resourcefulness and relationships has played a key role in creating a school culture of respect.

As a school, we are continuously developing and reflecting on our craft and are committed to meeting student needs and to supporting student growth as self-assessment capable learners. To this means, teachers collaborate, review student work samples, and discuss next steps for instruction in weekly Professional Learning Communities. We are committed to ensuring that all of our students learn, grow, and achieve. We truly are a small school with a big heart!

Our Local Measures

Local Measures provide the opportunity for schools and complex areas to provide supplemental data and information about their performance that may not be reflected by the statewide measures in Strive HI. As such, Local Measures can provide greater context to help stakeholders better understand and interpret how a school contributes to students' success.

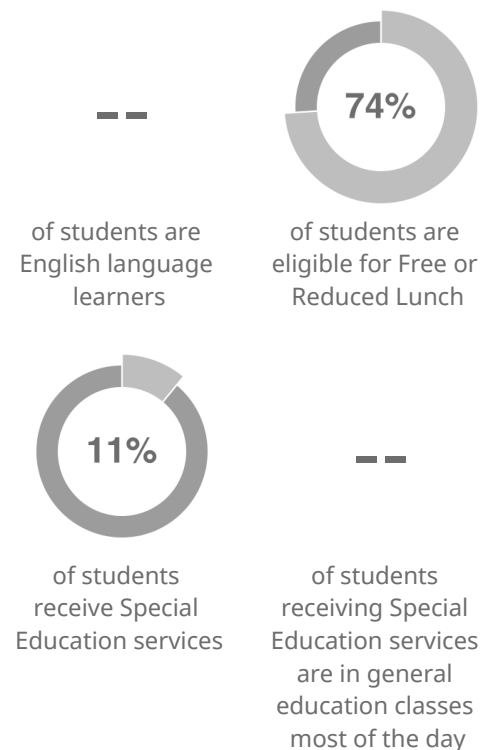
- 0%** **Retention.** Measures the percent of students retained (kept back a grade).
- 0%** **Suspension.** Measures the percent of students suspended for Class A-D offenses.

About Our School

Principal | Alexandra Obra
Grades | K-6
808-239-3111
www.waiahole.org

81

students enrolled



How do you measure how well a school is doing? In our estimation, it's more than scores on high-stakes tests. Schools should show that they are supporting children along the educational pipeline toward college, career, and community readiness. Are our students attending school? Are they graduating? Are they going to college? And how successfully are schools reducing the achievement gap between high-needs and non-high needs students?

The Strive HI Performance System was designed to account for these factors in student success. Initially created in 2013 by a U.S. Department of Education waiver from certain aspects of the former No Child Left Behind Act, Strive HI has been refocused by the goals and priorities of the 2017-2020 Department of Education and Board of Education Strategic Plan, the governing document for the public education system.

Learn more at
<http://bit.ly/StriveHISystem>